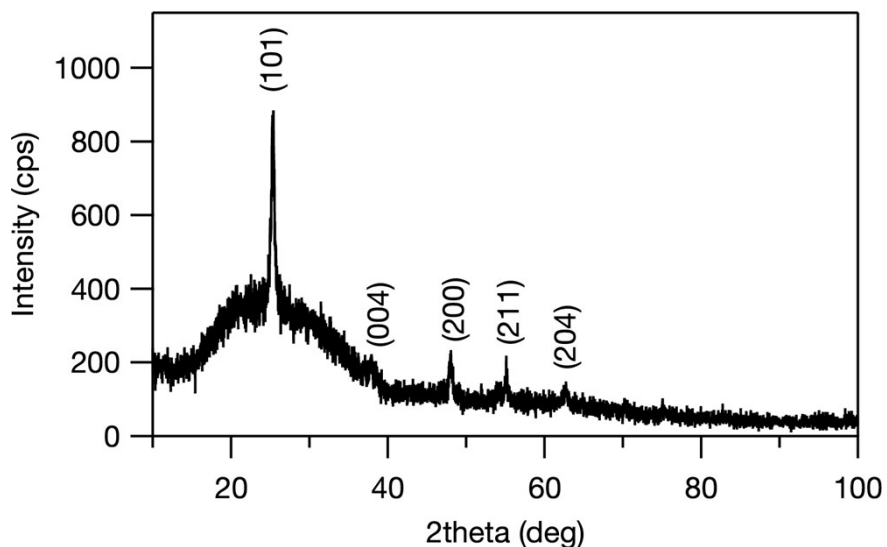
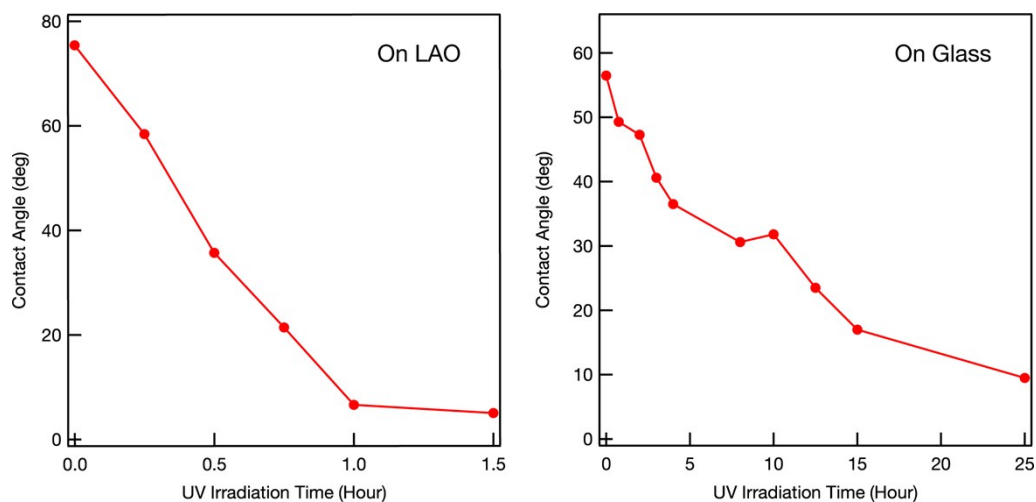


## Supplementary Information



**Figure S1.** Grazing incident XRD pattern of mesoporous  $\text{TiO}_2$  thin film fabricated on glass substrate. Assignments of crystal lattice indices for anatase phase are included.



**Figure S2.** Changes in water-contact angle with UV irradiation time for oleic acid-coated mesoporous  $\text{TiO}_2$  thin films fabricated on LAO (001) single-crystal and glass substrates.