

*Supplementary data for*

**Controlled “off-on” Fluorescent Probe for the Specific Detection of  
Hyperhomocysteinemia**

Jinrong Zheng<sup>2</sup>, Jianlong Li<sup>4</sup>, Hongli Luo<sup>3</sup>, Lingbin Sun<sup>5</sup>, Mangmang Sang<sup>\*,2</sup>, Xiu Yu<sup>\*,1</sup>.

<sup>1</sup>Shenzhen Key Laboratory of Respiratory Diseases, Shenzhen People’s Hospital (The Second Clinical Medical College, Jinan University; The First Affiliated Hospital, Southern University of Science and Technology), Shenzhen Institute of Respiratory Diseases, Shenzhen 518055, China;

<sup>2</sup>Xiamen Cardiovascular Hospital, Xiamen University, Xiamen 361006, China;

<sup>3</sup>Department of Hepatobiliary Surgery, Yongchuan Hospital, Chongqing Medical University, Chongqing 400000, China;

<sup>4</sup>Department of imaging radiology, Rizhao people"s hospital, Rizhao 276800, China;

<sup>5</sup>Department of Anesthesiology, The Second Clinical Medical College (Shenzhen People’s Hospital), Jinan University, Shenzhen 518055, China.

\*Correspondence should be addressed to Xiu Yu,

E-mail: xiuyucpu2015@163.com

TEL: 0755-25533018

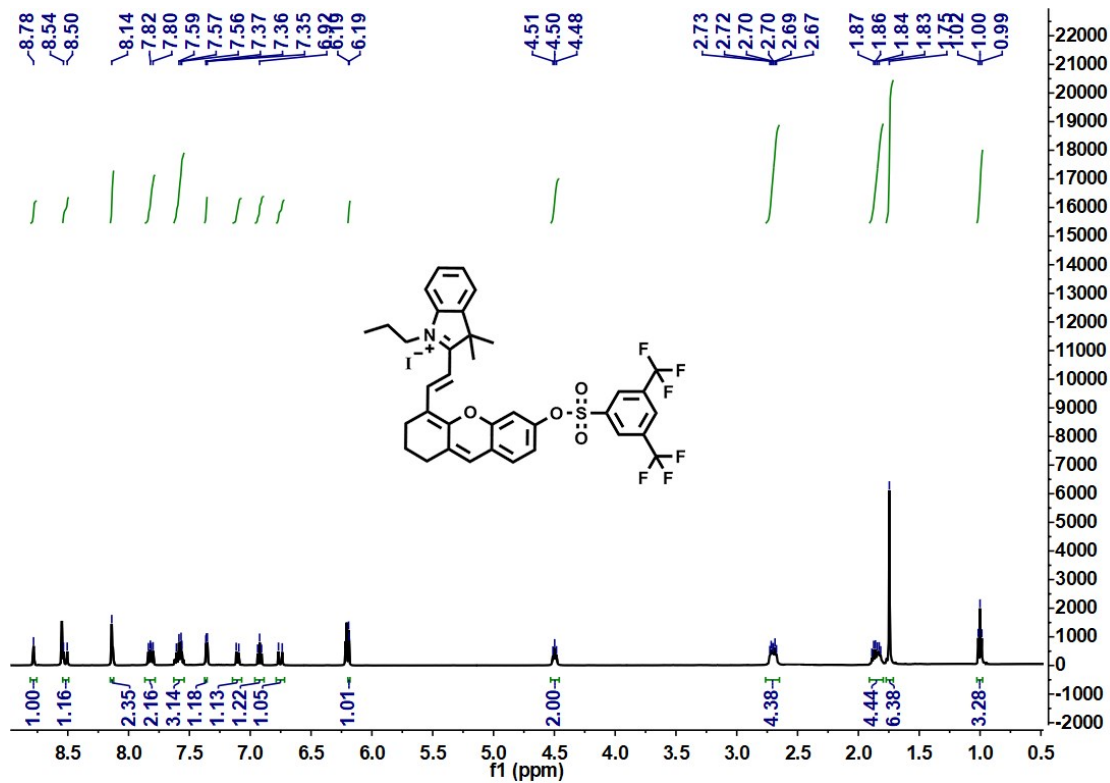


Figure S1. The  $^1\text{H}$  NMR of HSFP.

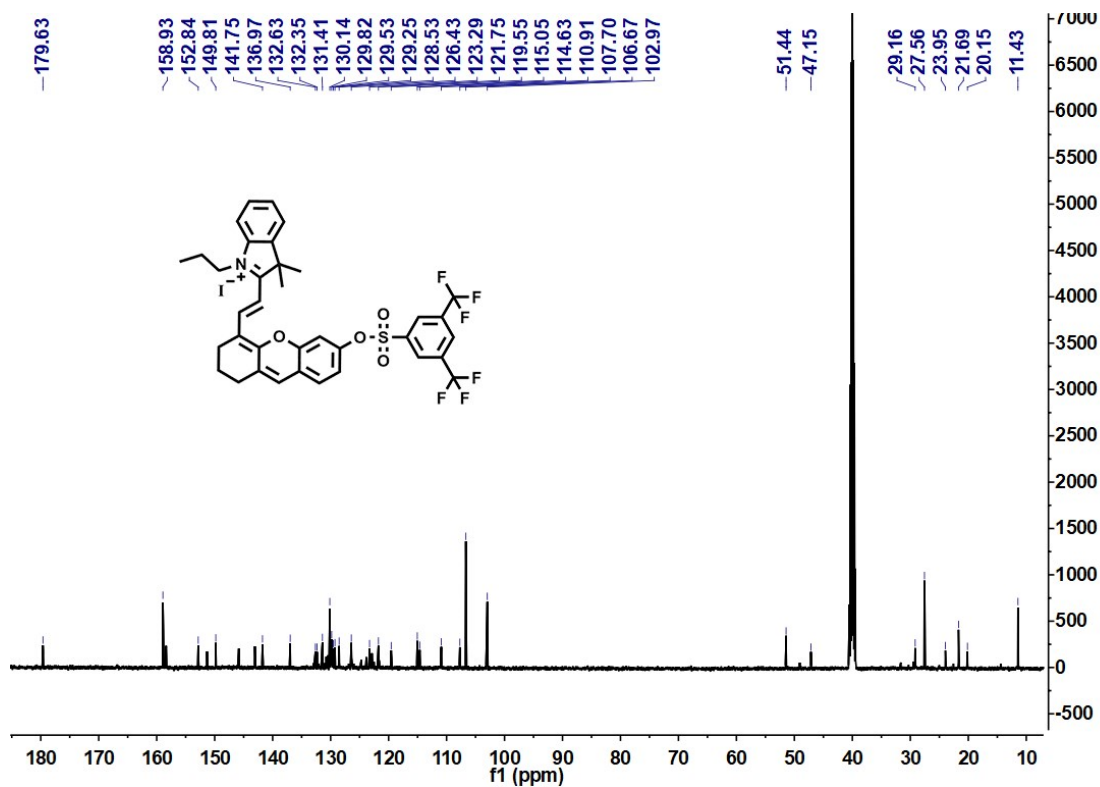
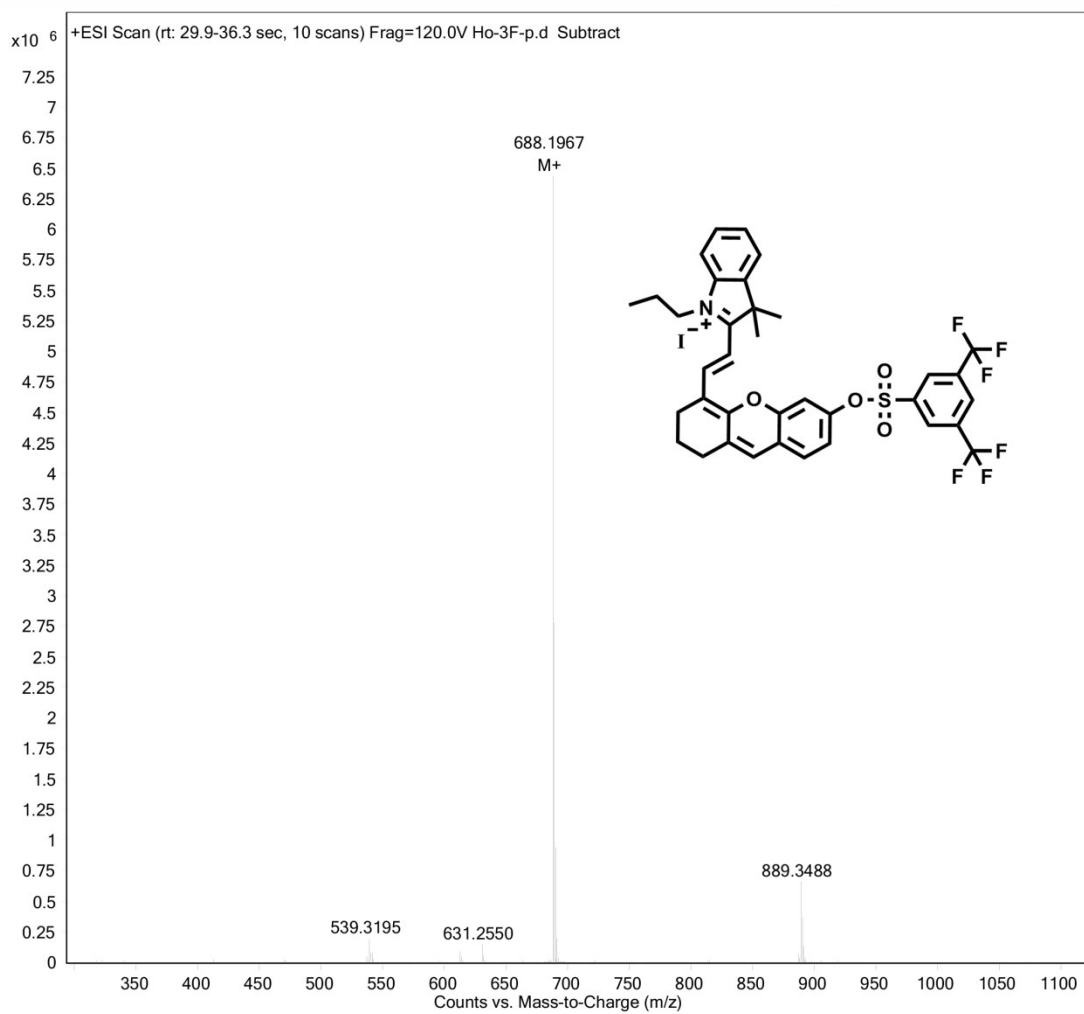
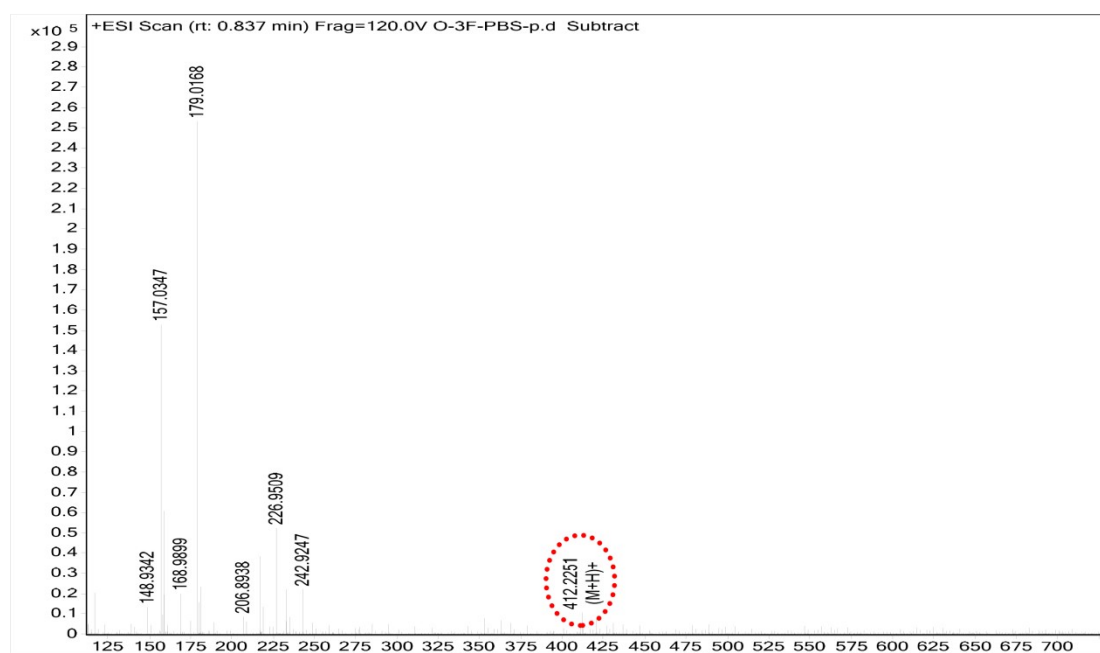


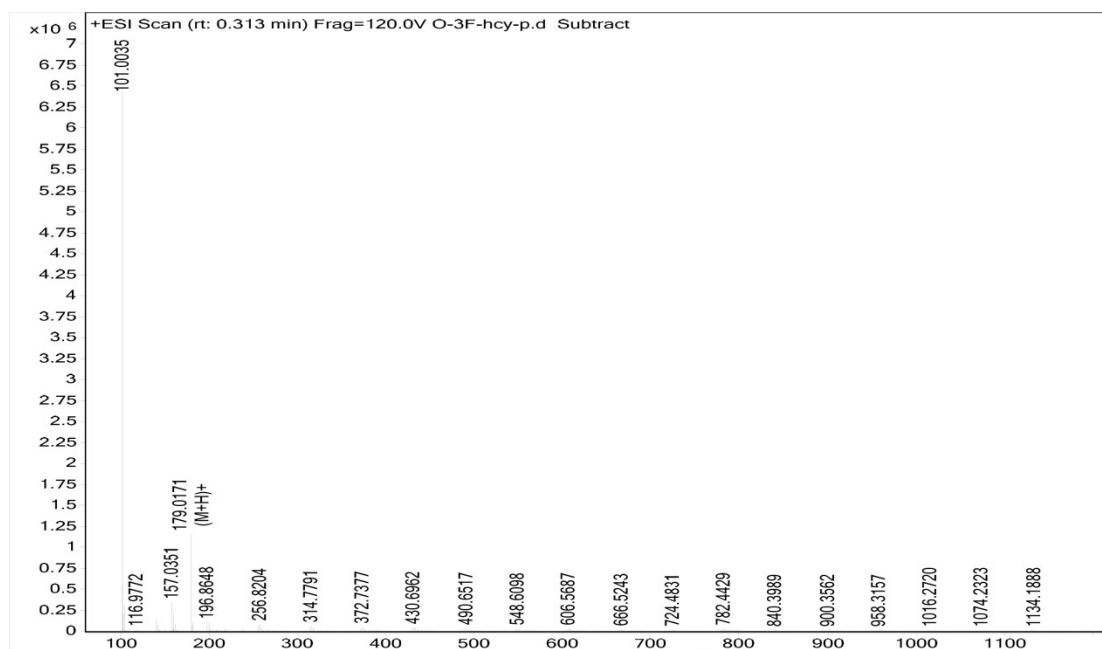
Figure S2. The  $^{13}\text{C}$  NMR of HSFP.



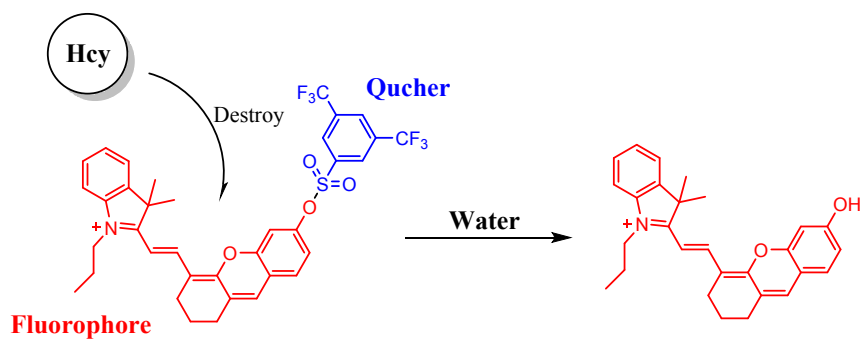
**Figure S3.** The HRMS of HSFP.



**Figure S4.** The HRMS of HSFP in PBS 180 min.



**Figure S5.** The HRMS of HSFP in Hcy 180 min.



**Figure S6.** The reaction scheme of HSFP toward Hcy in water.