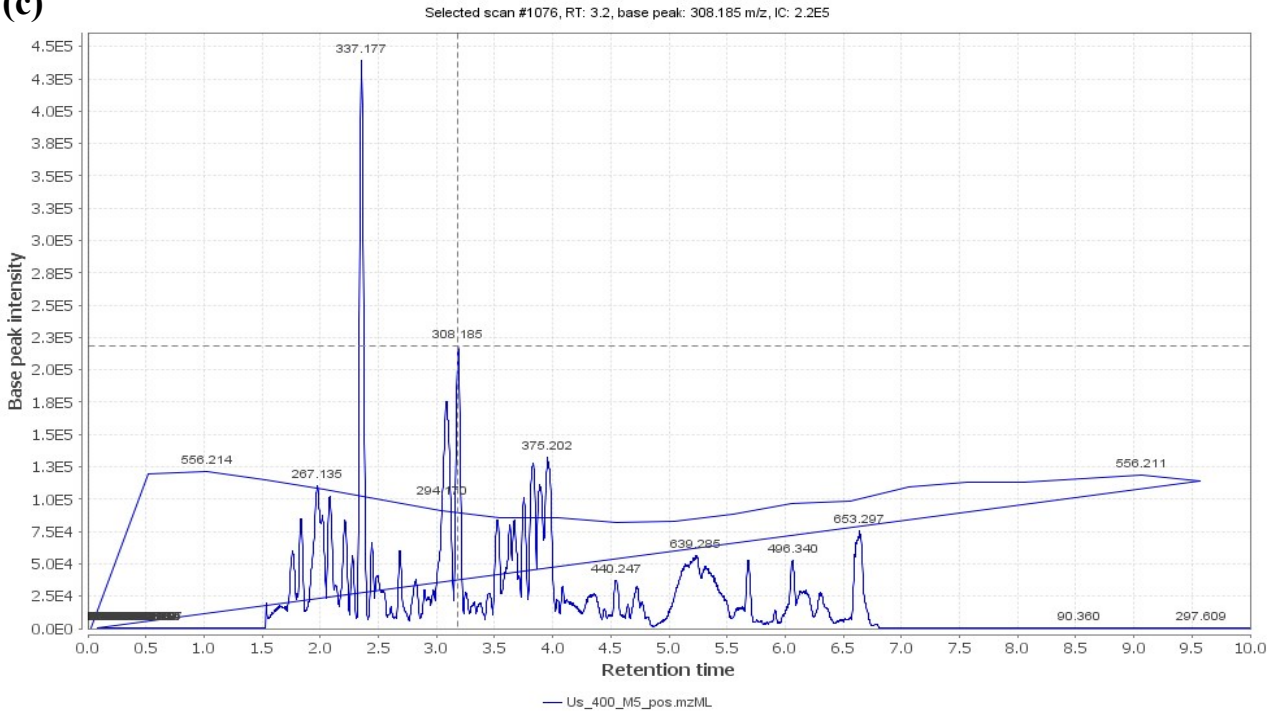


Supplementary material

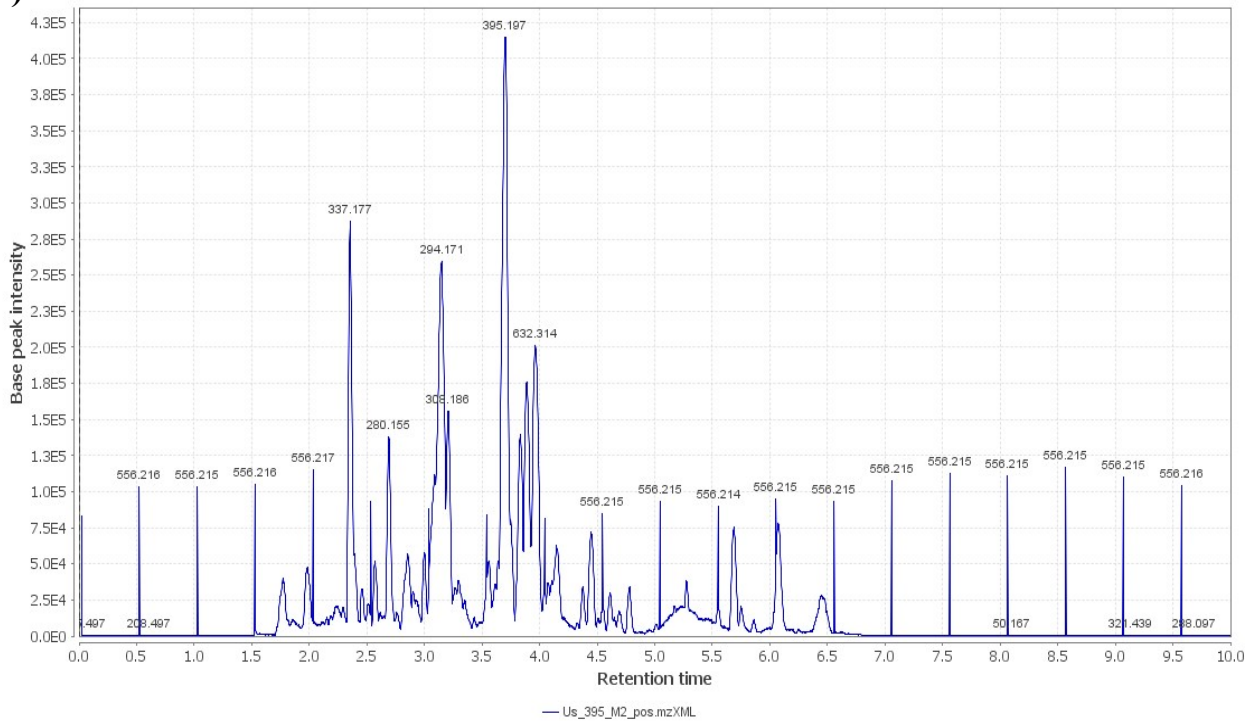
Table S1: List of *Tecoma* species and cultivars under study along with their collection areas and voucher specimen codes.

Plant name	Collection area	Voucher specimen codes
<i>Tecoma capensis</i> Lindl.	St. Mina monastery garden, King Mariot, Borg El Arab, Alexandria, Egypt	No. 11-1-2017I
<i>T. capensis</i> var. yellow	Mazhar Botanical garden, 26 th July corridor, Imbaba, Giza, Egypt	No. 11-1-2017II
<i>T. capensis</i> var. harmony	Mazhar Botanical garden, 26 th July corridor, Imbaba, Giza, Egypt	No. 11-1-2017III
<i>T. grandiflora</i> Loisel.	Mazhar Botanical garden, 26 th July corridor, Imbaba, Giza, Egypt	No. 11-1-2017IV
<i>T. radicans</i> (L.) Juss.	Antonyades Botanical Garden, Alexandria, Egypt	No. 11-1-2017V
<i>T. capensis</i> var. pink	Mazhar Botanical garden, 26 th July corridor, Imbaba, Giza, Egypt	No. 11-1-2017VI
<i>T. capensis</i> var. red	Mazhar Botanical garden, 26 th July corridor, Imbaba, Giza, Egypt	No. 11-1-2017VII
<i>Tecoma</i> × <i>smithii</i> W. Watson	El-Orman Botanical garden, Giza, Egypt.	No. 11-1-2017VIII

(c)



(d)



(e)

