

## Electronic Supplementary Information

### **Efficient activation of persulfate by calcium sulfate whisker supported nanoscale zero-valent iron for methyl orange removal**

Yi Han<sup>a,b</sup>, Xian Zhou<sup>c,\*</sup>, Li Lei<sup>a</sup>, Huiqun Sun<sup>a</sup>, Zhiyuan Niu<sup>a</sup>, Ziwei Zhou<sup>a</sup>,  
Zhibing Xu<sup>a</sup>, Haobo Hou<sup>d</sup>

<sup>a</sup> *College of Resources and Environment, Anqing Normal University, Anhui 246011,  
PR China ;*

<sup>b</sup> *Key Laboratory of Aqueous Environment Protection and Pollution Control of  
Yangtze River of Anhui Provincial Education Department, Anqing, Anhui 246011, PR  
China ;*

<sup>c</sup> *Key Laboratory of Geotechnical Mechanics and Engineering of Ministry of Water  
Resources, Changjiang River Scientific Research Institute, Wuhan, Hubei, 430010, PR  
China;*

<sup>d</sup> *School of Resource and Environmental Science, Wuhan University, Wuhan, Hubei,  
430079, P.R. China;*

\* Corresponding author. Tel.: +86 18502761087.

E-mail address: zhouxian@whu.edu.cn (X. Zhou).

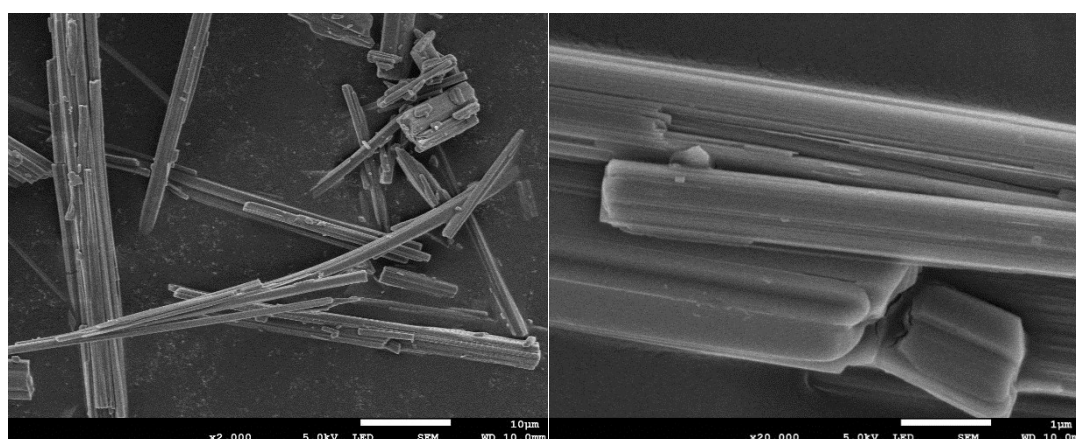
**ANOVA:** The ANOVA of the regression model is illustrated in Table S1. The Model F-value of 223.05 showed that the quadratic model was highly significant. There was only a 0.01% chance that a F-value this large could occur due to noise. Values of “Prob>F” less than 0.0001 indicates that model terms are significant. The “Pred R-Squared” of 0.9448 was close to the “Adj R-Squared” of 0.9921, means that the predicted and experimental values had a good consistency.<sup>1</sup> The corresponding and regression values of “Prob>Fless” than 0.0500 indicates the significance of model terms. In this case A, B, C, AB, AC, A<sup>2</sup>, B<sup>2</sup>, and C<sup>2</sup> are significant model terms. The ratio of “Adeq Precision” larger than 4 is desirable,<sup>2</sup> the ratio of 48.649 indicated an adequate signal and the model can be used to navigate the design space. The F-value denotes the significance in the model equation.<sup>3</sup> <sup>4</sup> he regression and corresponding value of “Prob>Fless” less than 0.0500 indicates that model terms are significant, in this case A, B, C, AB, AC, A<sup>2</sup>, B<sup>2</sup>, C<sup>2</sup> are significant model terms.

**Table S1** Analysis of variance (ANOVA) of the response surface model.

Source	Sum of Squares	DF	F-Value	Prob(P)>F
Quadratic	0.513	9	223.05	< 0.0001
A- nZVI/CSW-2	0.023	1	88.27	< 0.0001
B- PS	0.173	1	676.98	< 0.0001
C-T	0.181	1	706.04	< 0.0001
AB	0.012	1	46.02	0.0003

AC	0.005	1	20.83	0.0026
BC	3.6E-05	1	0.14	0.7187
A <sup>2</sup>	0.017	1	64.87	< 0.0001
B <sup>2</sup>	0.060	1	234.18	< 0.0001
C <sup>2</sup>	0.032	1	124.66	< 0.0001

From the Fig. S1, the crystal structure and morphology could be clearly observed, the morphology of CSW was smooth and needle-like.



**Fig. S1.** The SEM images of CSW

## References

1. H. L. Liu, Y. W. Lan and Y. C. Cheng, *Process Biochem*, 2004, **39**, 1953-1961.
2. H. Liu, J. K. Yang, N. R. Zhu, H. Zhang, Y. Li, S. He, C. Z. Yang and H. Yao, *J Hazard Mater*, 2013, **258**, 144-150.
3. H. Mazaheri, K. T. Lee, S. Bhatia and A. R. Mohamed, *Bioresource Technol*, 2010, **101**, 9335-9341.
4. S. S. Yang, W. Q. Guo, X. J. Zhou, Z. H. Meng, B. Liu and N. Q. Ren, *Bioresource Technol*, 2011, **102**, 9843-9851.