

Supplementary Information

Integrating Hierarchical Porous Nanosheets in the Design of Carbon
Cloth-based Sandwiched Sulfur Cathodes to Achieve High Areal
Capacity in Lithium Sulfur Batteries

Yu Fu^a, Kui Cheng^b, Jing Hu^a, and Limin Zhou^{a}*

Supporting Figures

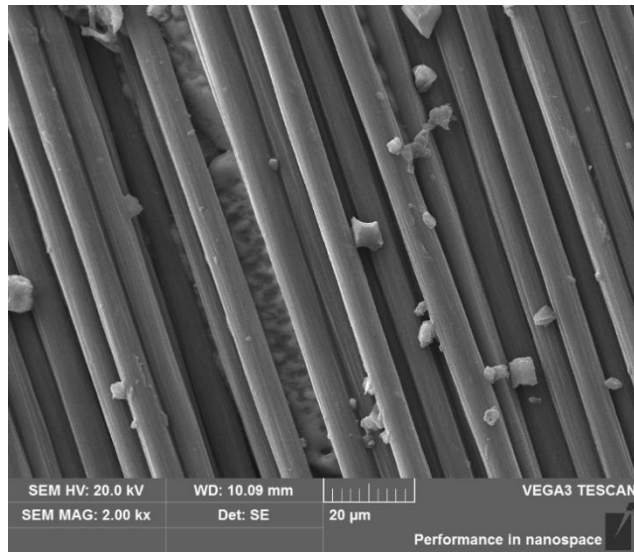


Fig. S1 Sulfur distribution on a CC with a mass loading of ~6 mg/cm².

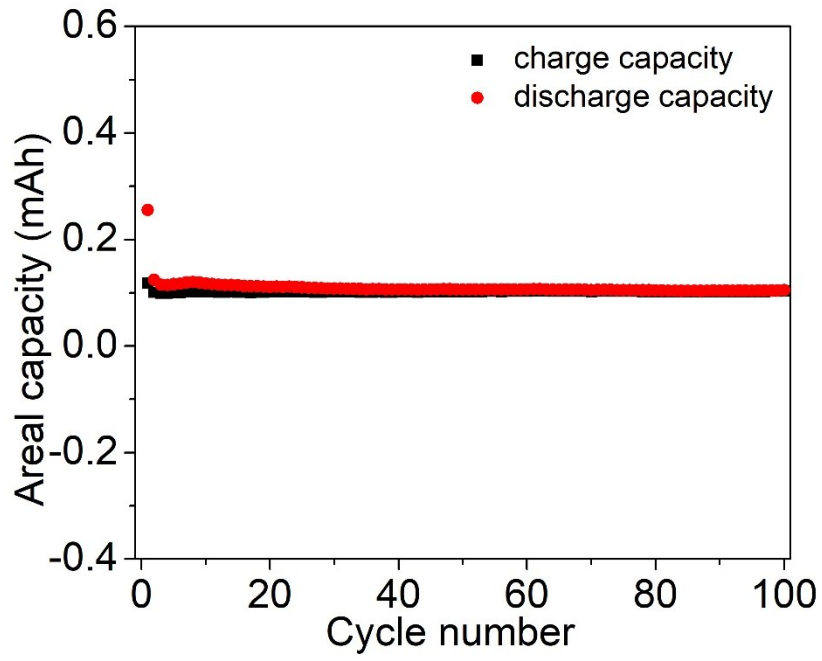


Fig. S2 Areal capacity of a 1-cm² CC@pCo₃O₄ substrate.