

Electronic Supplementary Information (ESI)

Controllable Synthesis of Platinum Diselenide (PtSe₂) Inorganic Fullerene

Mengjing Wang,^a Mashiyat Sumaiya Shawkat,^{a,b} Zheng Xi,^c Xiaohu Xia,^c Kyu Seung Lee,^d Dong Ick Son,^d Tae-Sung Bae,^e Hyeon Ih Ryu,^e Hee-Suk Chung,^{e*} and Yeonwoong Jung,^{a,b,f,*}

^a NanoScience Technology Center, University of Central Florida, Orlando, Florida 32826, United States Email: yeonwoong.jung@ucf.edu

^b Department of Electrical and Computer Engineering, University of Central Florida, Orlando, Florida 32826, United States

^c Department of Chemistry, University of Central Florida, Orlando, Florida 32826, United States

^d Institute of Advanced Composite Materials, Korea Institute of Science and Technology, Jeonbuk 55324, South Korea

^e Analytical Research Division, Korea Basic Science Institute, Jeonju 54907, South Korea Email: hschung13@kbsi.re.kr

^f Department of Materials Science and Engineering, University of Central Florida, Orlando, Florida 32826, United States

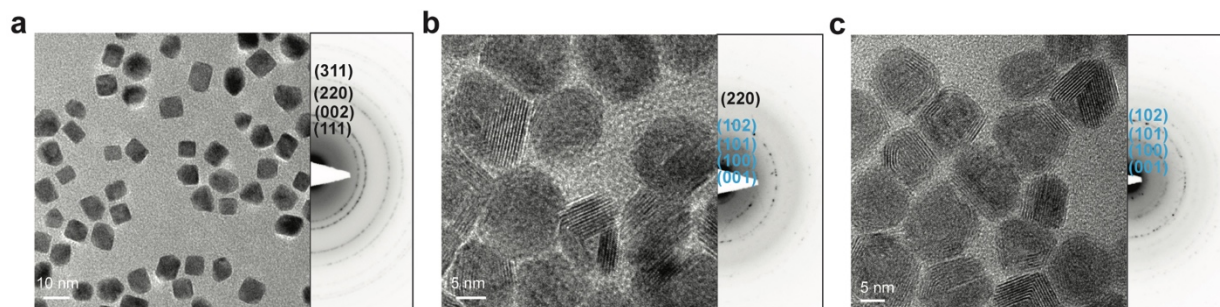


Figure S1. TEM image and SAED patterns of Pt nanocubes before (a) and after selenization for 5 min (b), 50 mins (c). Blue index denotes diffraction from PtSe₂, and black index denotes diffraction from Pt.

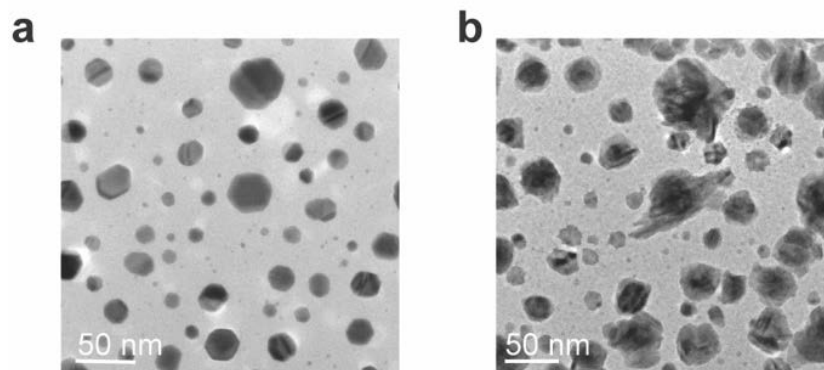


Figure S2. TEM image of annealed ~ 0.5 nm Pt film on silicon nitride TEM grid before (a) and after (b) selenization.

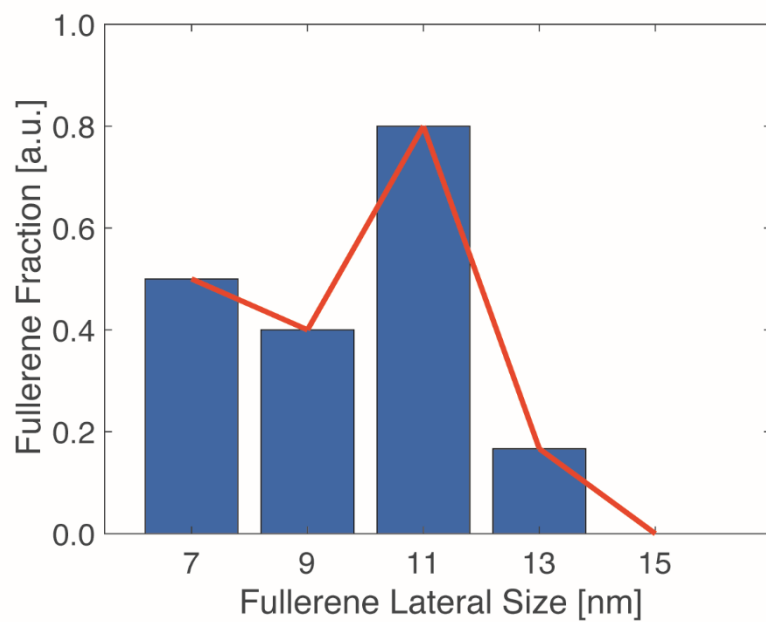


Figure S3. Histogram to show the fraction of fullerenes as a function of their lateral dimension.