

## Supplementary file

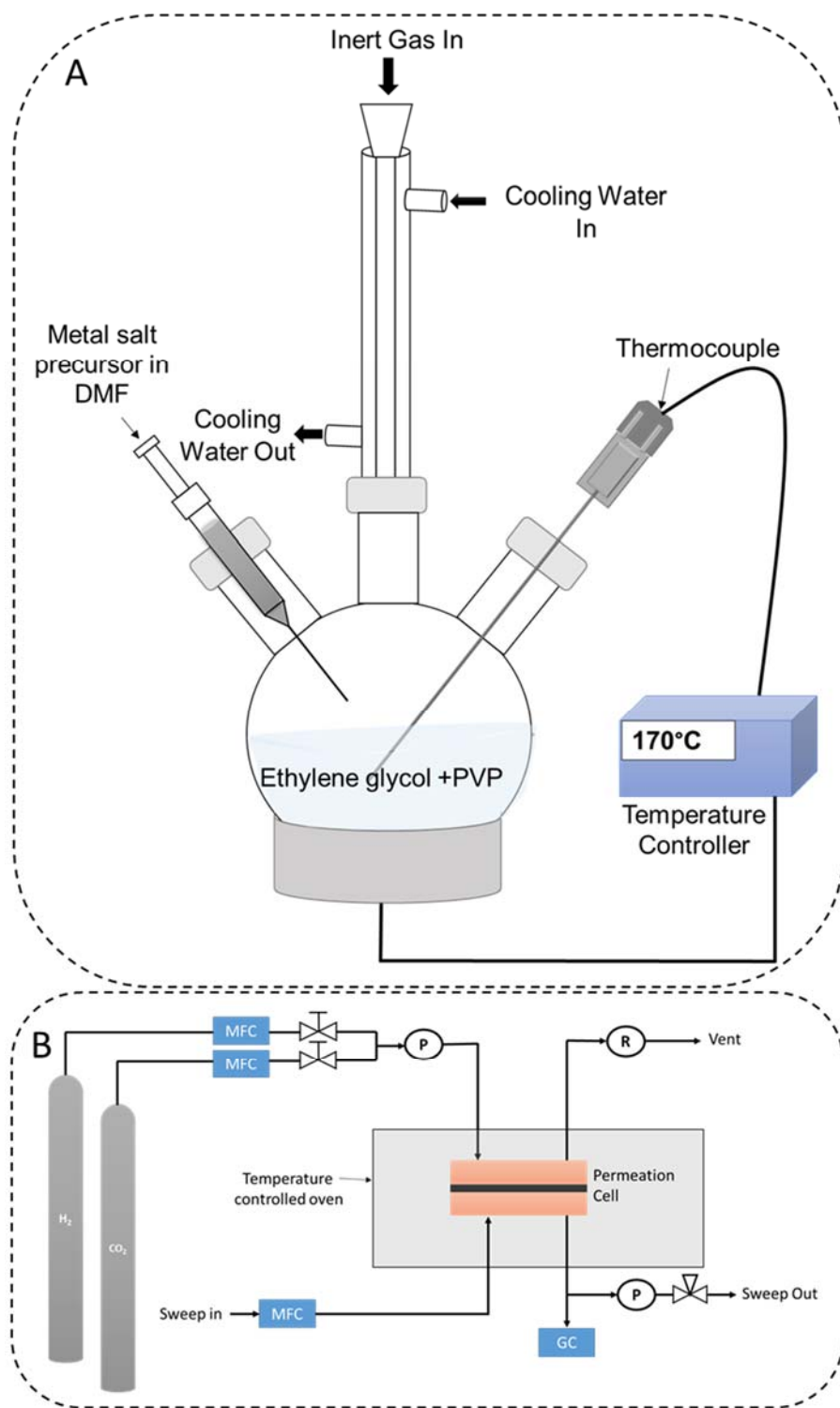
# Facile One-Pot Synthesis of PdM (M=Ag, Ni, Cu, Y) Nanowires for use in Mixed Matrix Membranes for Efficient Hydrogen Separation

*Abhishek Kumar<sup>1</sup>, Liang Huang<sup>1</sup>, Leiqing Hu<sup>1</sup>, Deqiang Yin<sup>1</sup>, Haiqing Lin<sup>1\*</sup>, Mark T. Swihart<sup>1,2\*</sup>*

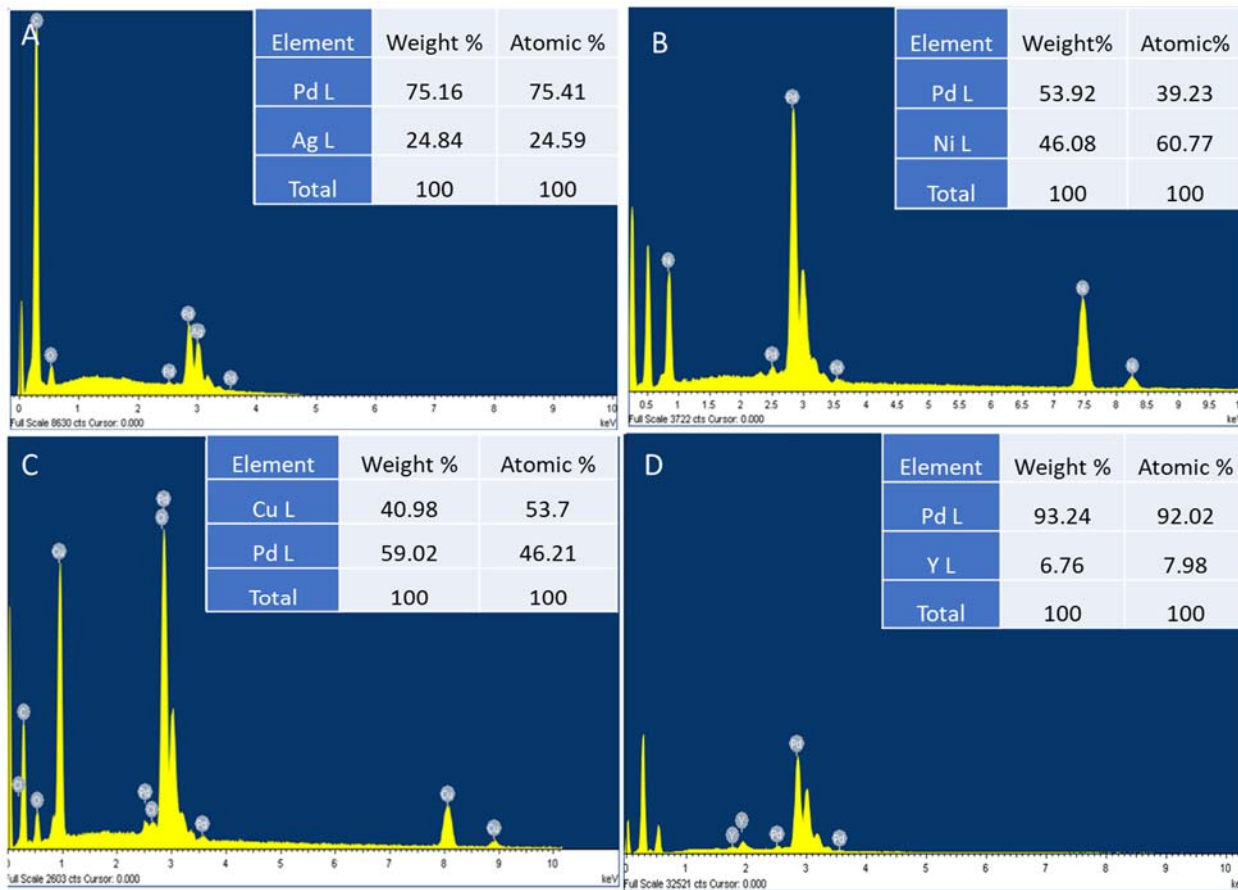
<sup>1</sup> Department of Chemical and Biological Engineering, University at Buffalo, The State University of New York (SUNY)

<sup>2</sup> RENEW Institute, University at Buffalo (SUNY), The State University of New York (SUNY)

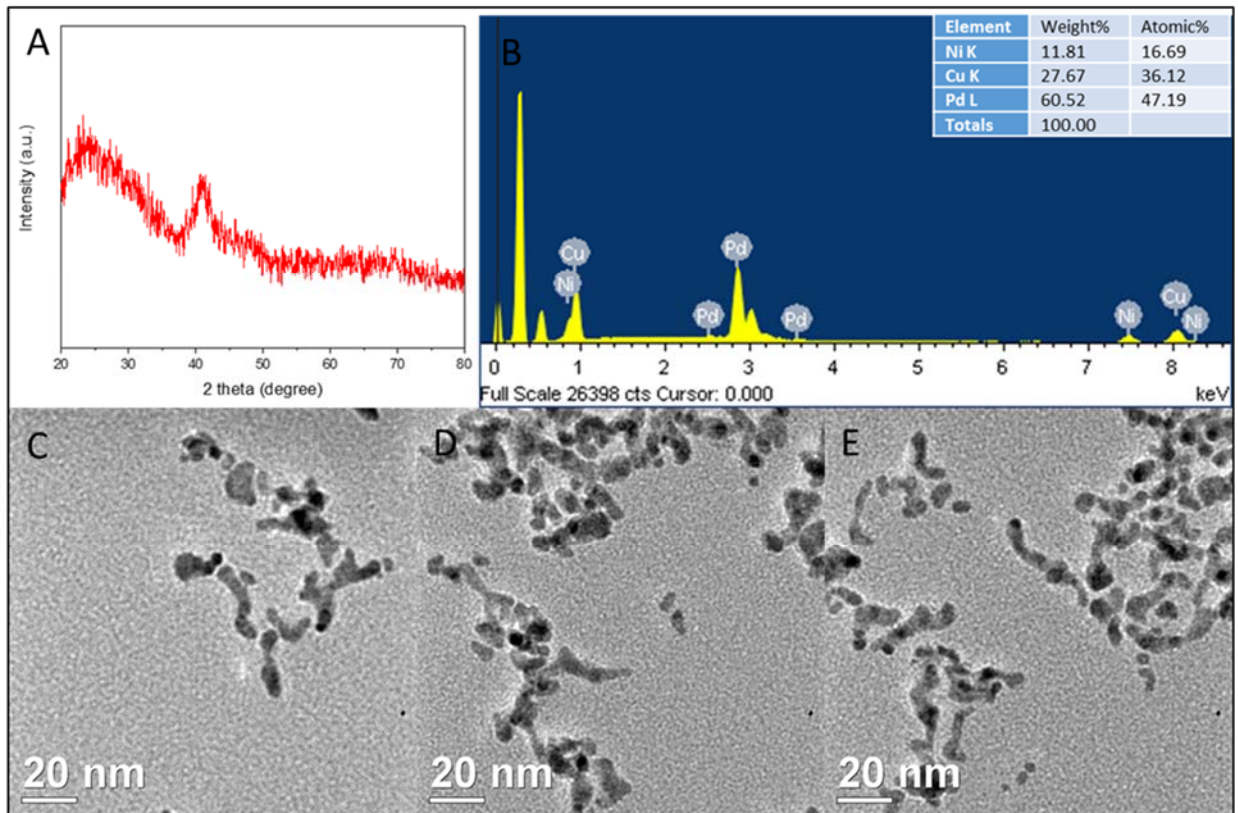
E-mail : [haiqingl@buffalo.edu](mailto:haiqingl@buffalo.edu); [swihart@buffalo.edu](mailto:swihart@buffalo.edu)



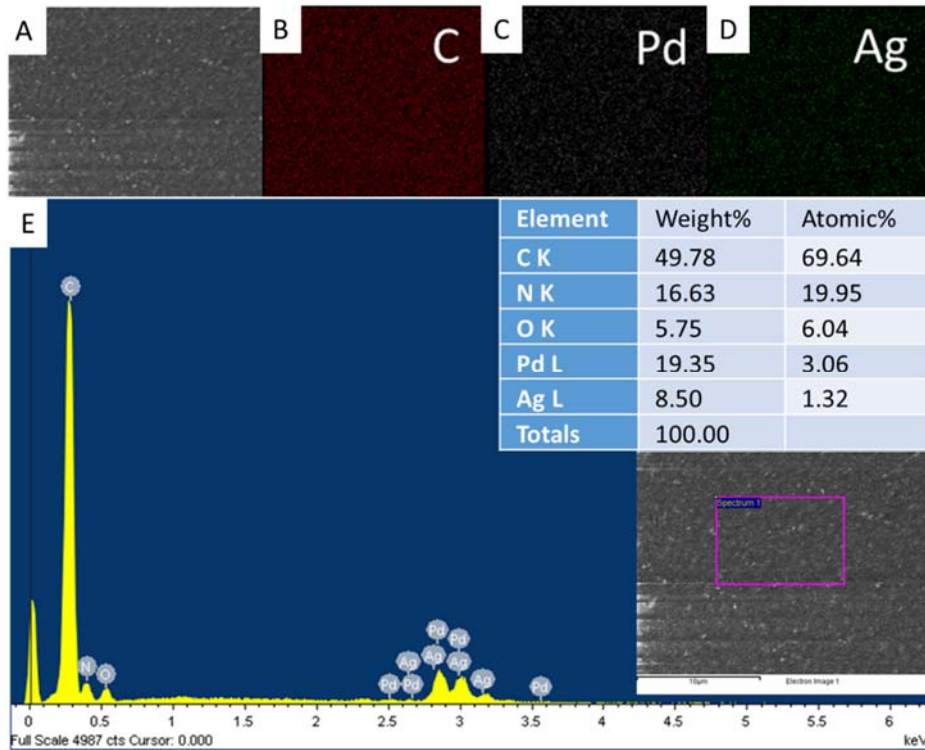
**Figure S1. A)** Schematic of polyol synthesis of Pd and Pd-based nanowires; **B)** Schematic of gas separation setup



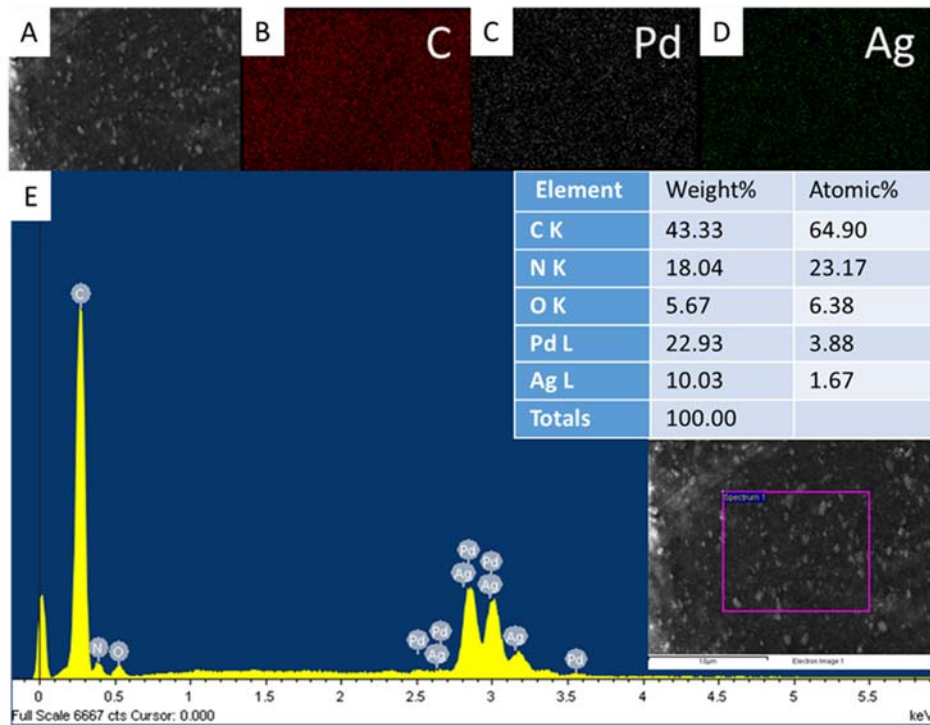
**Figure S2.** EDS area scan results showing elemental composition and the ratios of metals in **A)**  $\text{Pd}_{0.74}\text{Ag}_{0.26}$  nanowires, **B)**  $\text{Pd}_{0.4}\text{Ni}_{0.6}$  nanowires, **C)**  $\text{Pd}_{0.53}\text{Cu}_{0.46}$  nanowires, **D)**  $\text{Pd}_{0.92}\text{Y}_{0.08}$  nanowire



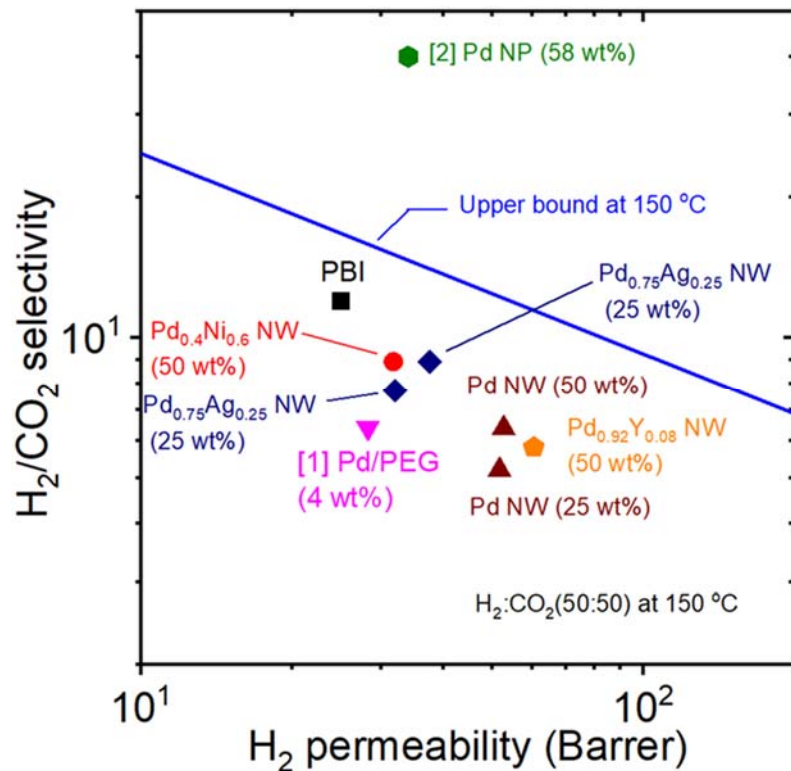
**Figure S3: A)** XRD pattern of PdCuNi NWs; **B)** EDS spectra of PdCuNi NWs; **C-E)** TEM images of PdCuNi NWs



**Figure S4:** (A) SEM image and corresponding elemental mapping of (B) C; (C) Pd; (D) Ag; (E) EDS spectra of top part of PdAgNW/PBI-MMM



**Figure S5** (A) SEM image and corresponding elemental mapping of (B) C; (C) Pd; (D) Ag; (E) EDS spectra of bottom part of PdAg NW/PBI-MMM



**Figure S6:** Mixed-gas separation performance of PdM NW/PBI-MMMs at 150 °C versus Robeson's 2008 upper bound (the blue line) at 150 °C

- [1] H. S. M. Suhaimi, C. P. Leo and A. L. Ahmad, *Chem. Eng. Technol.*, 2017, **40**, 631–638.
- [2] L. Zhu, D. Yin, Y. Qin, S. Konda, S. Zhang, A. Zhu, S. Liu, T. Xu, M. T. Swihart and H. Lin, *Adv. Funct. Mater.*, 2019, **29**, 1904357.

**Table S1:** Pure-gas H<sub>2</sub> sorption and solubility of PdAg NW/PBI-MMM evaluated at 150 °C

Pressure (bar)	Sorption (cm <sup>3</sup> (STP)/ cm <sup>3</sup> )	Solubility (cm <sup>3</sup> (STP)/ cm <sup>3</sup> atm)	Diffusivity (10 <sup>-8</sup> cm <sup>2</sup> /s)
4.45	6.90	1.57	18.4
7.89	8.76	1.13	25.6
11.35	14.17	1.27	22.7