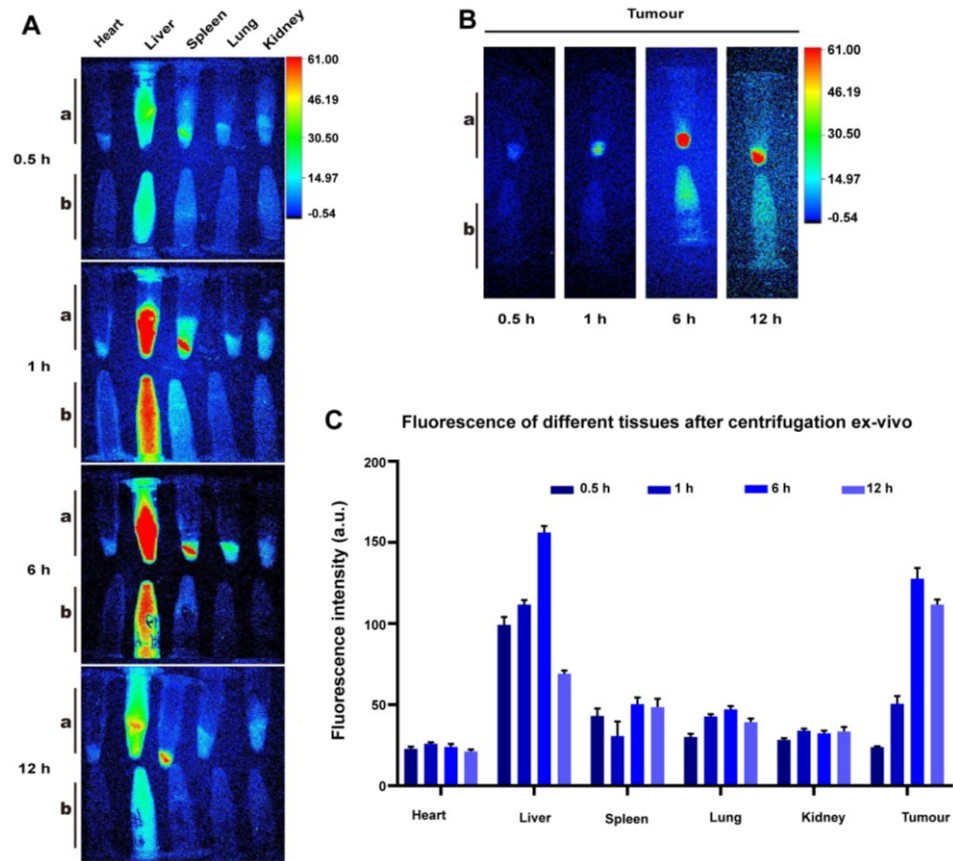


**Fig. S1** A. Relative *PER2* mRNA expression was detected in the control and *PER2* overexpression groups after infected with *PER2* overexpression lentivirus. B. Relative *PER2* protein expression was detected in the control and *PER2* overexpression groups after infected with *PER2* overexpression lentivirus. C. Heat map of MAPK3-related proteins in GO enrichment of differentially expressed proteins. D. Principal component analysis. E. The coefficient of variation distribution after corrected. F. Qualitative protein Overlap statistics of samples 2278 proteins were identified in all 6 samples. The results are expressed as the means  $\pm$  SD. \* $P < 0.05$ , \*\* $P < 0.01$ , \*\*\* $P < 0.001$ .



**Fig S2.** The distribution map of FURH-PFH-NPs in vivo. A. FL in different tissues after centrifugation at 0.5 h, 1 h, 6 h, 12 h after injection FURH-PFH-NPs. B. FL in tumour after centrifugation at 0.5 h, 1 h, 6 h, 12 h after FURH-PFH-NPs injection. C. Quantification of FL from sediment of different tissues at 0.5 h, 1 h, 6 h, 12 h. (a. sediment, b. supernatant.) The results are expressed as the means  $\pm$  SD. \* $P < 0.05$ , \*\* $P < 0.01$ , \*\*\* $P < 0.001$ .

**Table. S1** The expression of PER2 in NPC and chronically inflamed nasopharyngeal mucosa

	PER2		P value
	+	-	
NPC	14 (22.22%)	49 (77.78%)	0.000
Nasopharyngeal mucosa	23 (88.46%)	3 (11.54%)	

**Table. S2** Relationship of PER2 and Ki-67 expression in NPC.

PER2 level	Ki-67 level		P value <sup>a</sup>	P value <sup>b</sup>
	+	-		
+	1	8	0.000	0.000
-	27	1		

a. P value of continuity corrected chi-square test. b. P value of linear-by-linear association test.

**Table. S3** Differential proteins in overexpress vs control groups

	Upregulate (>1.5)	Downregulate (<1.5)	Number of differential proteins
Overexpress-VS-Control	140	34	174