

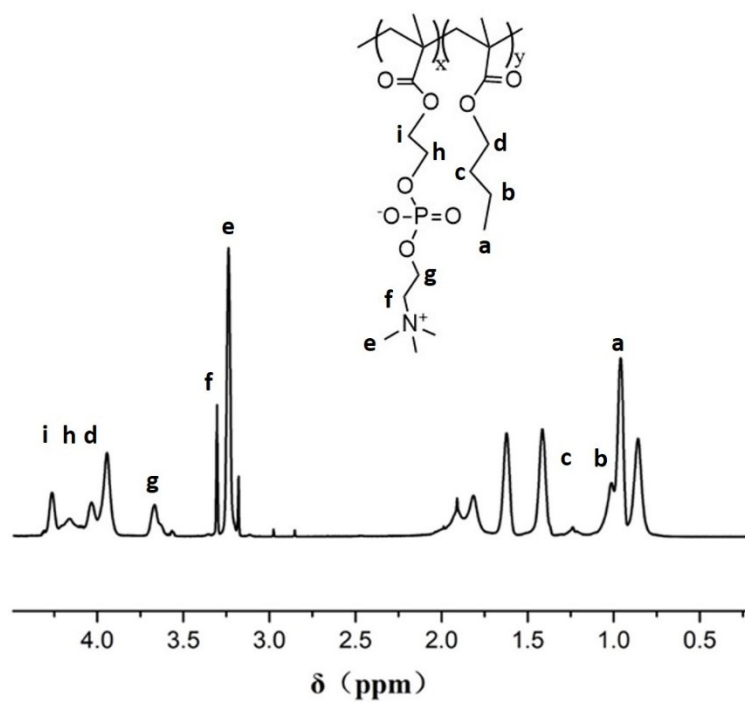
## Electronic Supplementary Information

### Biodegradable Phosphorylcholine Copolymer for Cardiovascular Stent Coating

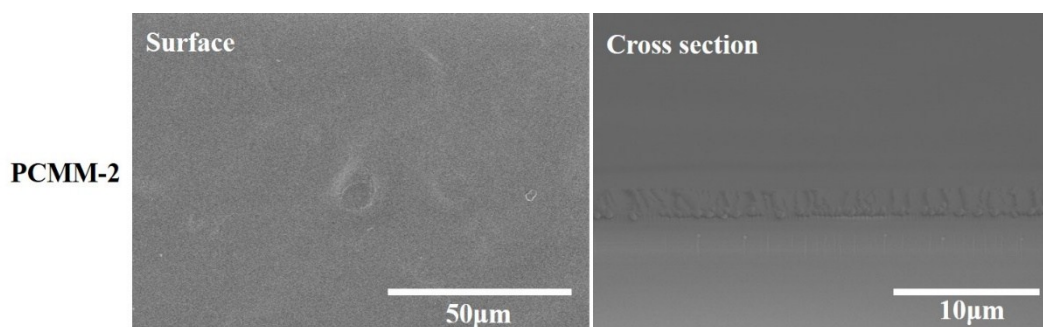
*Jun Liu,<sup>‡a</sup> Jing Wang,<sup>‡a</sup> Yun-fan Xue,<sup>a</sup> Ting-Ting Chen,<sup>a</sup> Dan-ni Huang,<sup>a</sup> You-xiang Wang,<sup>a</sup> Ke-Feng Ren,<sup>\*a</sup> Yun-bing Wang,<sup>b</sup> Guo-sheng Fu<sup>\*c</sup> and Jian Ji<sup>a</sup>*

- a) MOE Key Laboratory of Macromolecule Synthesis and Functionalization, Department of Polymer Science and Engineering, Zhejiang University, Hangzhou 310027, China.
- b) National Engineering Research Center for Biomaterials, Sichuan University, Chengdu 610064, China
- c) Department of Cardiology, Sir Run Run Shaw Hospital, Zhejiang University, Hangzhou 310020, China.

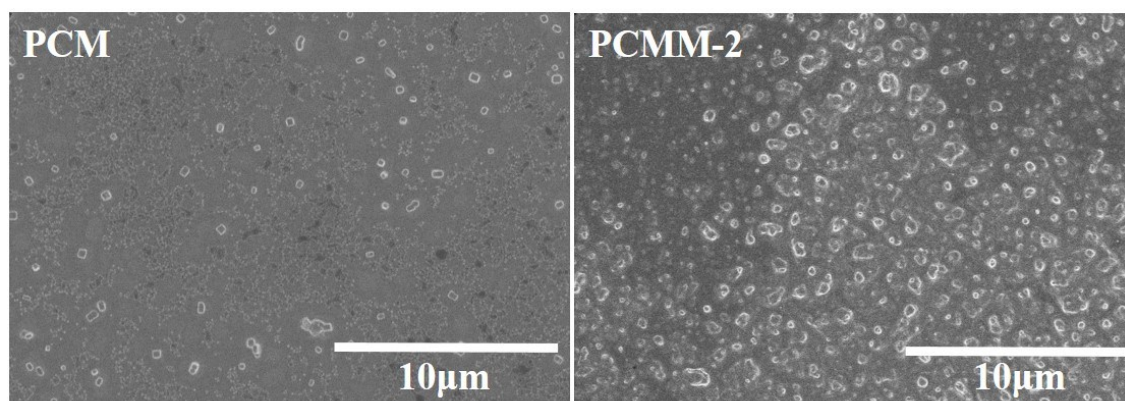
\*Corresponding author: renkf@zju.edu.cn, fugs@zju.edu.cn



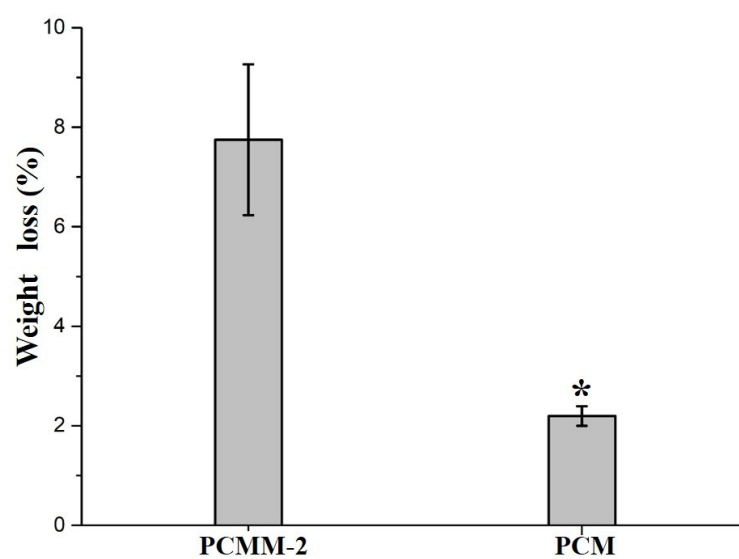
**Fig. S1**  $^1\text{H}$  NMR spectrum of PCM copolymers.



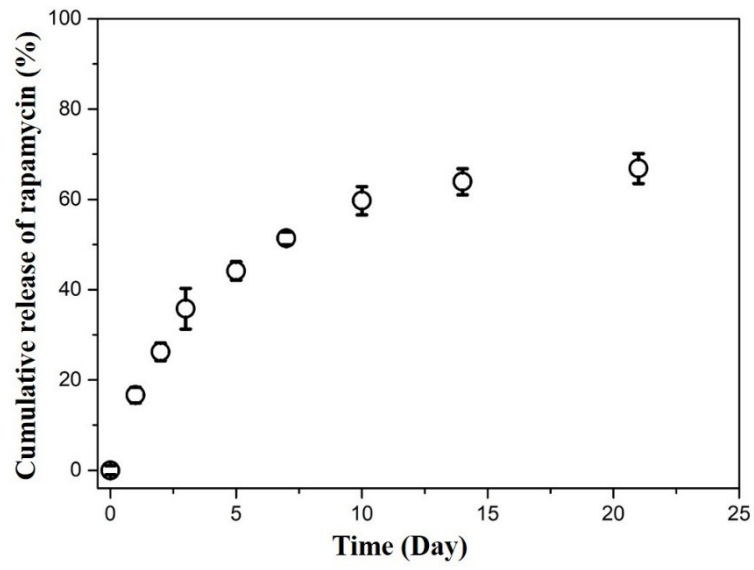
**Fig. S2** SEM of PCMM coating.



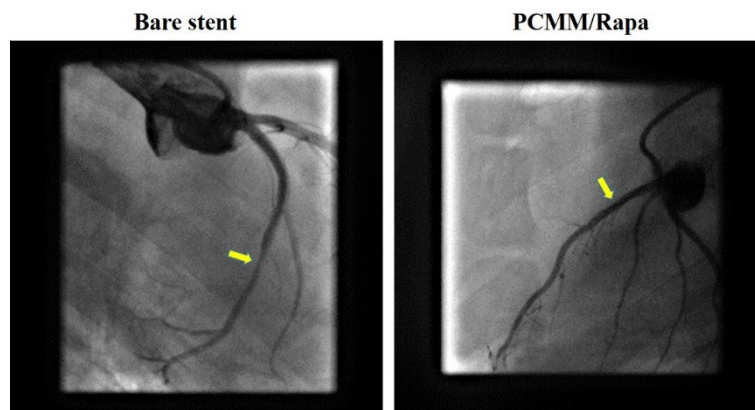
**Fig. S3** Higher magnification SEM micrographs of coatings after enzymatic degradation for 7 days.



**Fig. S4** Weight loss of PCMM-2 and PCM in lipase solution (1 mg/mL, PBS) for 7 days.



**Fig. S5** Release profile of rapamycin loaded PCMM-2 coatings



**Fig. S6** Digital subtraction angiography of the bare stent and PCMM/Rapa stent after 42-day implantation, respectively. The yellow arrows indicate the implant position.