

Supporting information: Assessment of Shifted Excitation Raman Difference Spectroscopy in Highly Fluorescent Biological Samples

Florian Korinth^{a,b}, Tanveer Ahmed Shaik^a, Jürgen Popp^{a,c} Christoph Krafft^{a*}

^a Leibniz Institute of Photonic Technology and Member of Leibniz Research Alliance “Health Technologies”, 07745 Jena, Germany.

^b Leibniz Institute for Astrophysics Potsdam and Member of Leibniz Research Alliance “Health Technologies”, 14482 Potsdam, Germany

^c Institute of Physical Chemistry and Abbe Center of Photonics, Friedrich Schiller University, 07743 Jena, Germany.

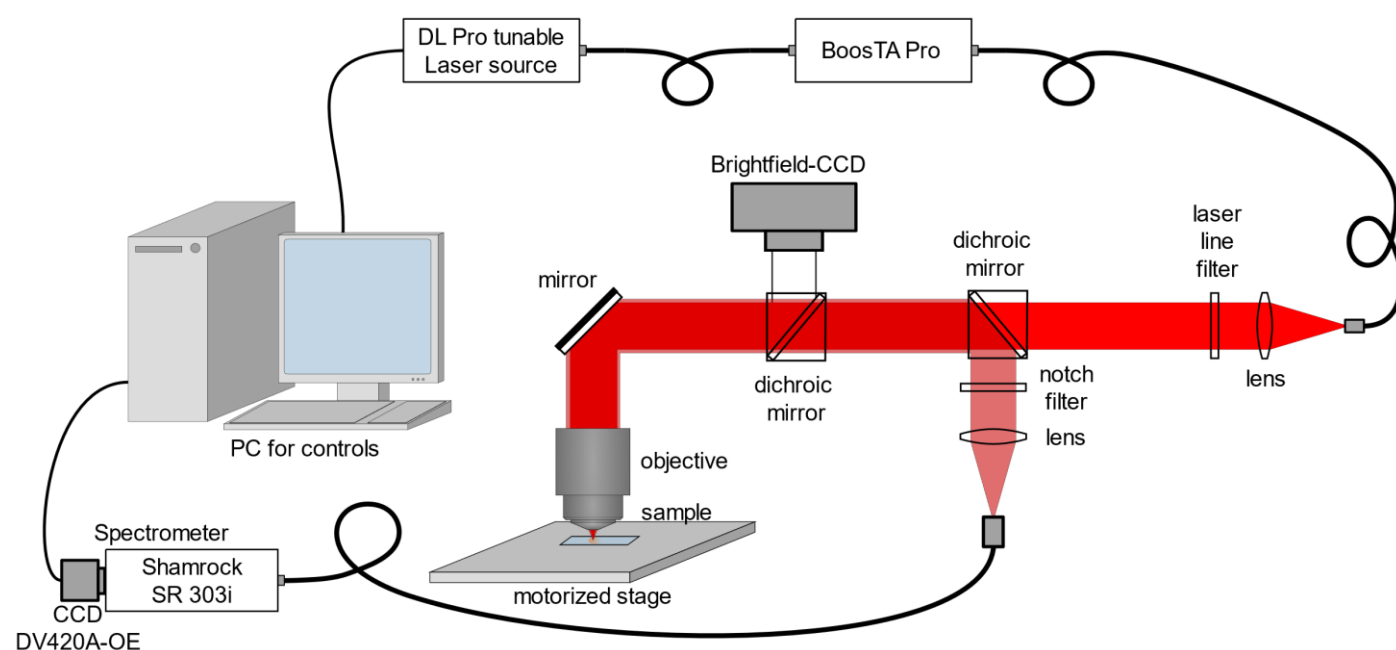


Figure S1. Schematic of the SERDS Setup.

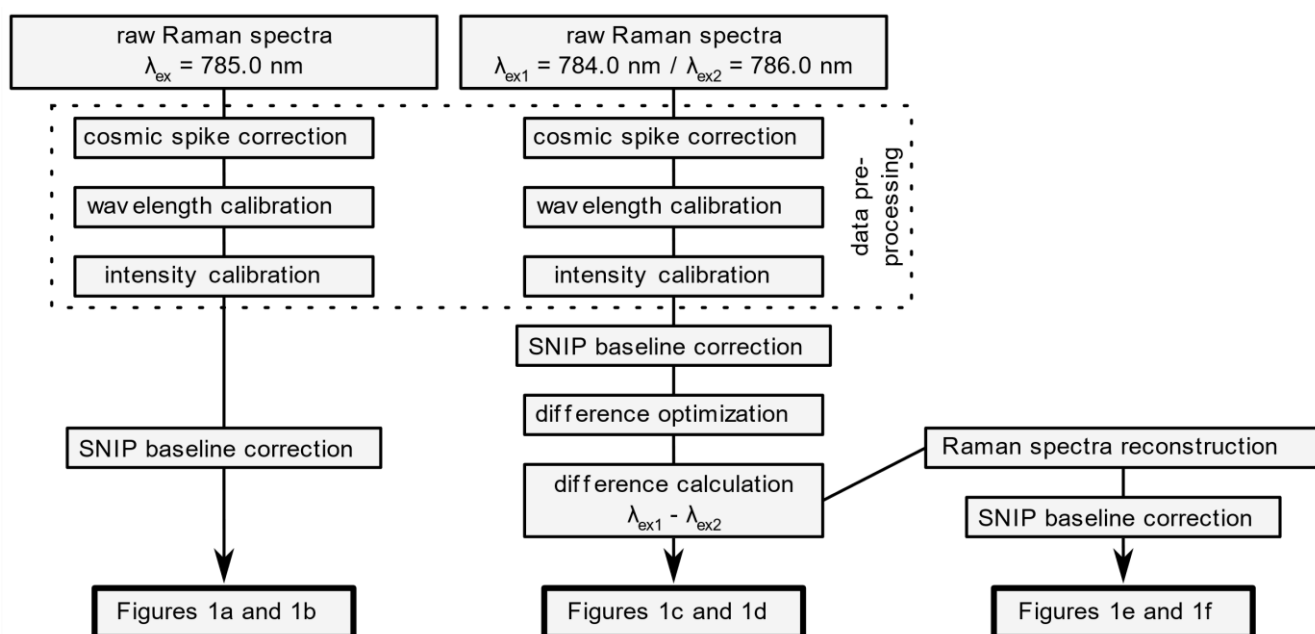


Figure S2. Overview of the necessary spectral preprocessing steps for the assessment of the SERDS method and the generation of Figure 1.

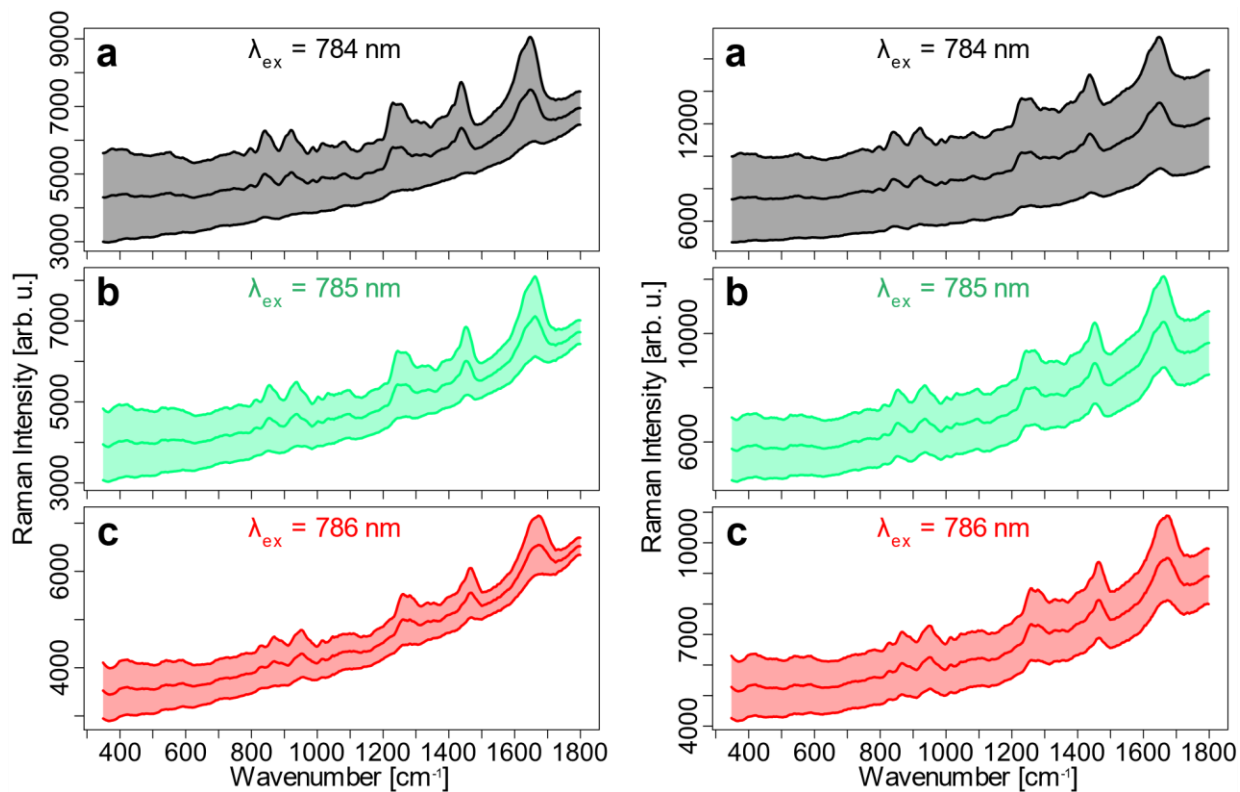


Figure S3. Raw, calibrated mean Raman spectra (\pm standard deviation) of untreated control sample (left) and GE cross-linked EP after 0.5 h (right) measured at: (a) $\lambda_{\text{ex}} = 784 \text{ nm}$; (b) $\lambda_{\text{ex}} = 785 \text{ nm}$; (c) $\lambda_{\text{ex}} = 786 \text{ nm}$ (Wavenumber axis relative to $\lambda_{\text{ex}} = 785 \text{ nm}$ for a, b, c).

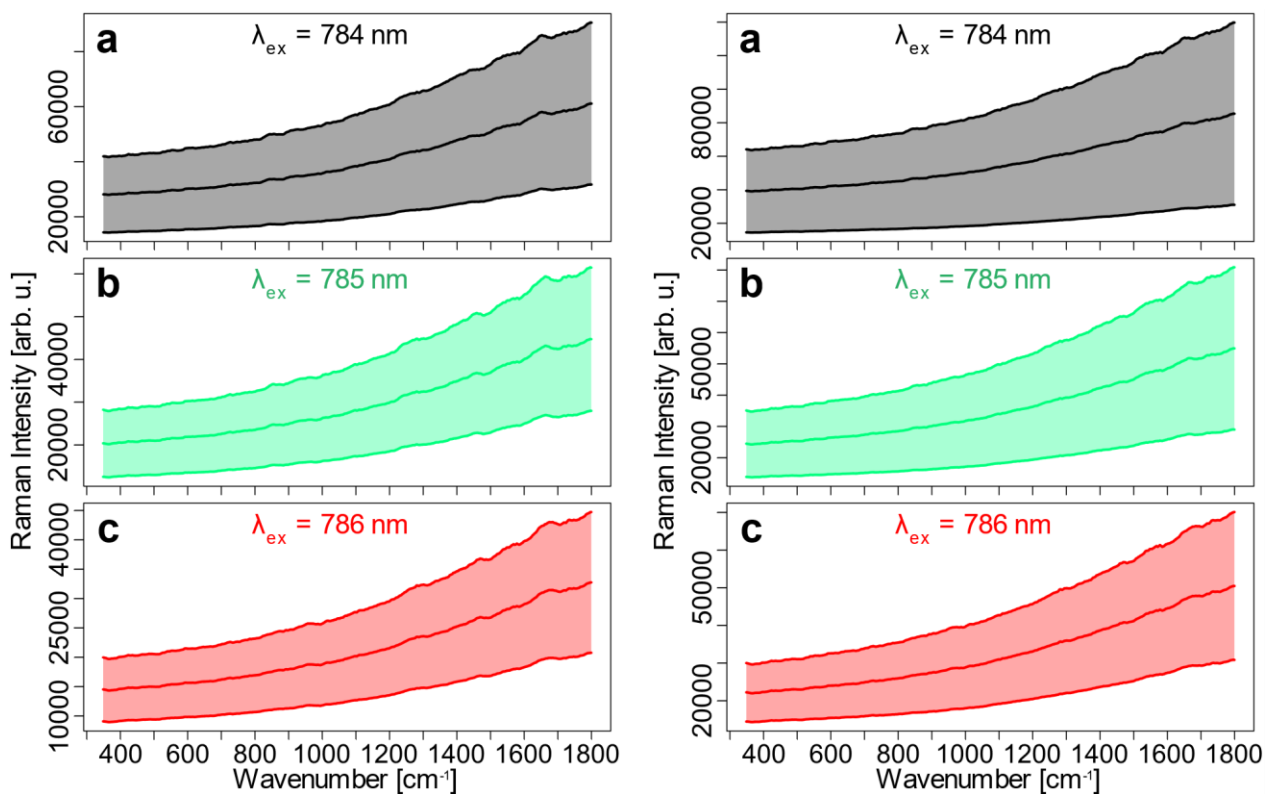


Figure S4. Raw, calibrated mean Raman spectra (\pm standard deviation) of the GE cross-linked EP after 2.0 h (left) and 4 h (right) measured at: (a) $\lambda_{\text{ex}} = 784 \text{ nm}$; (b) $\lambda_{\text{ex}} = 785 \text{ nm}$; (c) $\lambda_{\text{ex}} = 786 \text{ nm}$ (Wavenumber axis relative to $\lambda_{\text{ex}} = 785 \text{ nm}$ for a, b, c).

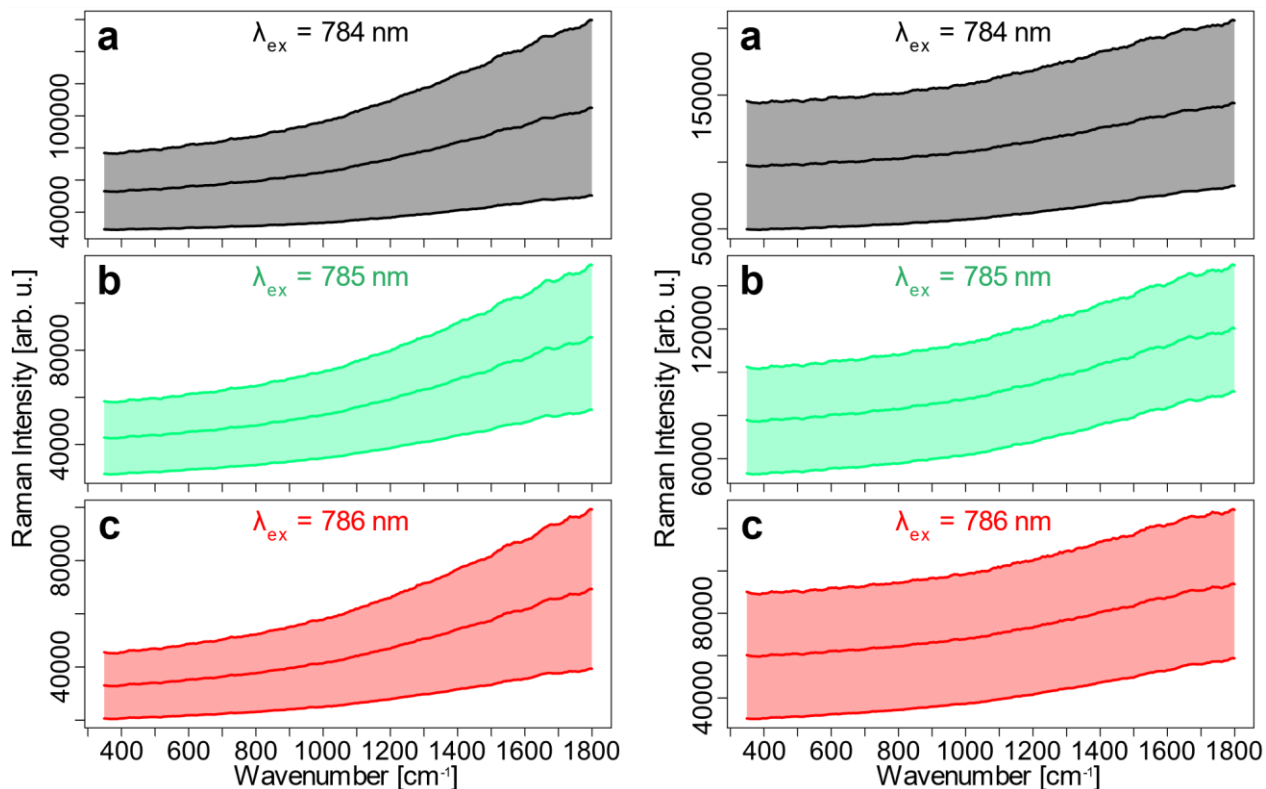


Figure S5. Raw, calibrated mean Raman spectra (\pm standard deviation) of the GE cross-linked EP after 6.0 h (left) and 12 h (right) measured at: (a) $\lambda_{\text{ex}} = 784$ nm; (b) $\lambda_{\text{ex}} = 785$ nm; (c) $\lambda_{\text{ex}} = 786$ nm (Wavenumber axis relative to $\lambda_{\text{ex}} = 785$ nm for a, b, c).

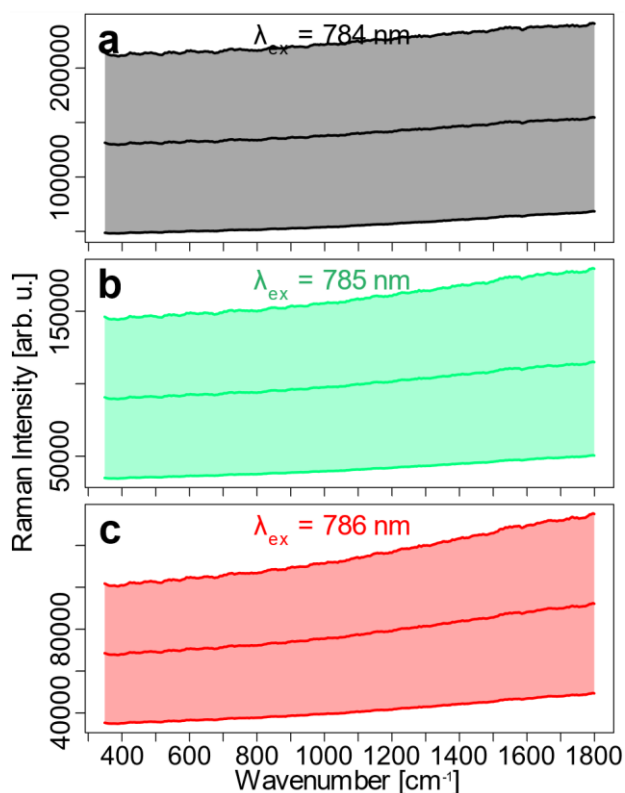


Figure S6. Raw, calibrated mean Raman spectra (\pm standard deviation) of the GE cross-linked EP after 24 h measured at: (a) $\lambda_{\text{ex}} = 784$ nm; (b) $\lambda_{\text{ex}} = 785$ nm; (c) $\lambda_{\text{ex}} = 786$ nm (Wavenumber axis relative to $\lambda_{\text{ex}} = 785$ nm for a, b, c).

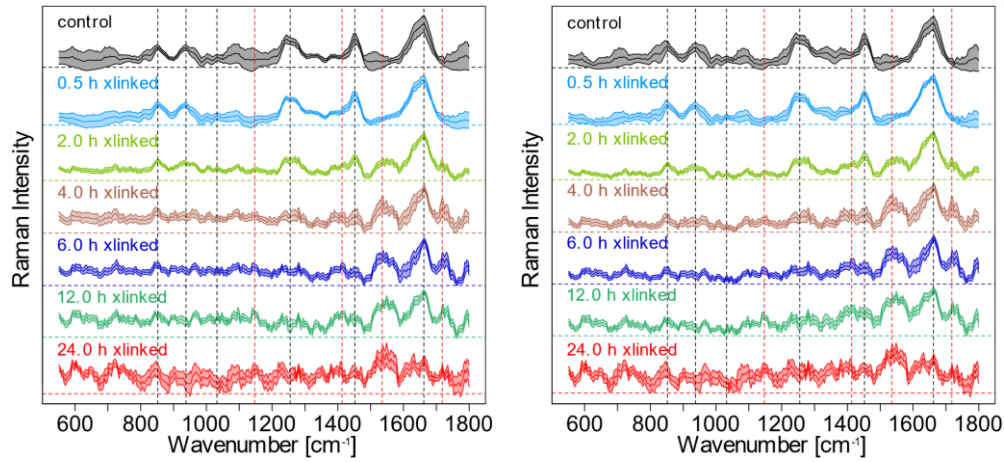


Figure S7. Mean EMSC (left) and rubberband (right) corrected Raman spectra (\pm standard deviation) of untreated and GE cross-linked EP (0.5 h, 2 h, 4 h, 6 h, 12 h and 24 h) measured at $\lambda_{\text{ex}} = 785$ nm, normalized on the highest intensity. Black dotted vertical lines correspond to collagen type I Raman bands and red dotted vertical lines correspond to Raman bands associated with cross-linking.

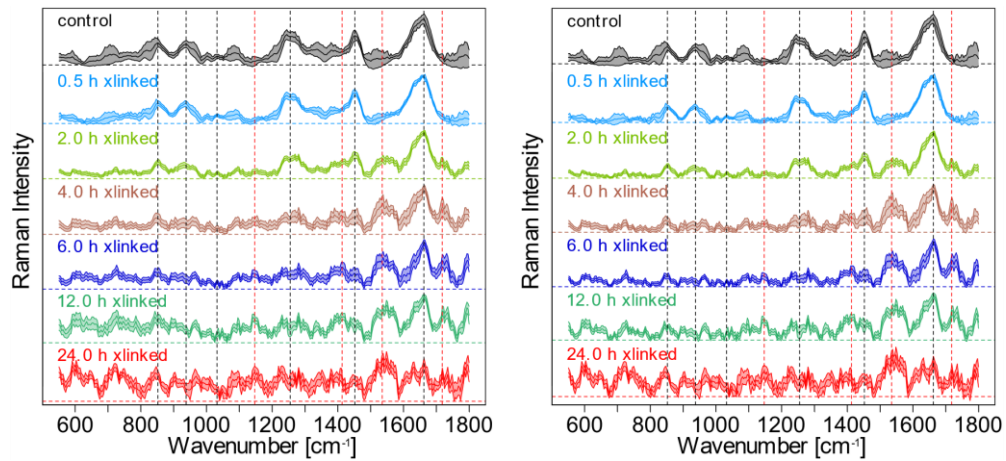


Figure S8. Mean polynomial (left) and SNIP (right) corrected Raman spectra (\pm standard deviation) of untreated and GE cross-linked EP (0.5 h, 2 h, 4 h, 6 h, 12 h and 24 h) measured at $\lambda_{\text{ex}} = 785$ nm, normalized on the highest intensity. Black dotted vertical lines correspond to collagen type I Raman bands and red dotted vertical lines correspond to Raman bands associated with cross-linking.

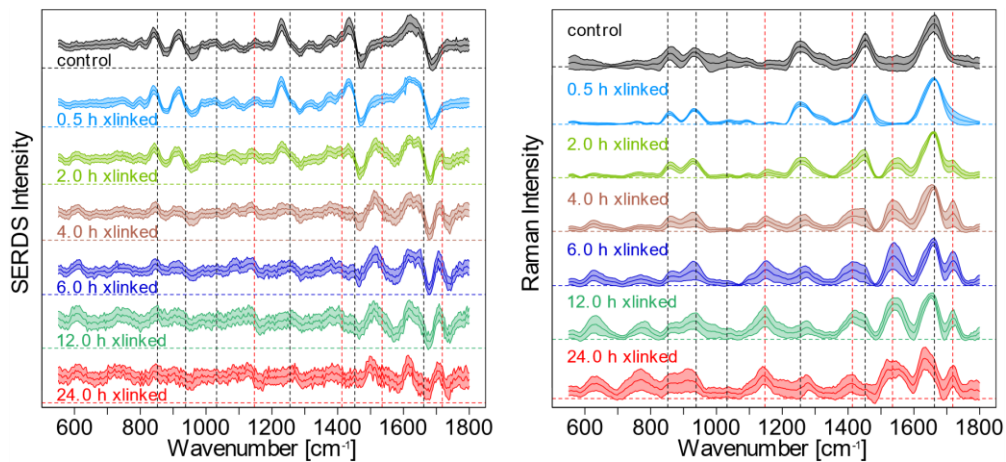


Figure S9. Mean SNIP corrected, difference optimized SERDS spectra (\pm standard deviation) of $\lambda_{\text{ex}1} - \lambda_{\text{ex}2} = 784$ nm - 786 nm (left) and mean reconstructed, SNIP corrected Raman spectra (\pm standard deviation) of the SERDS spectra on the left (right) for untreated and GE cross-linked EP (0.5 h, 2 h, 4 h, 6 h, 12 h and 24 h), normalized on the highest intensity. Black dotted vertical lines correspond to collagen type I Raman bands and red dotted vertical lines correspond to Raman bands associated with cross-linking.