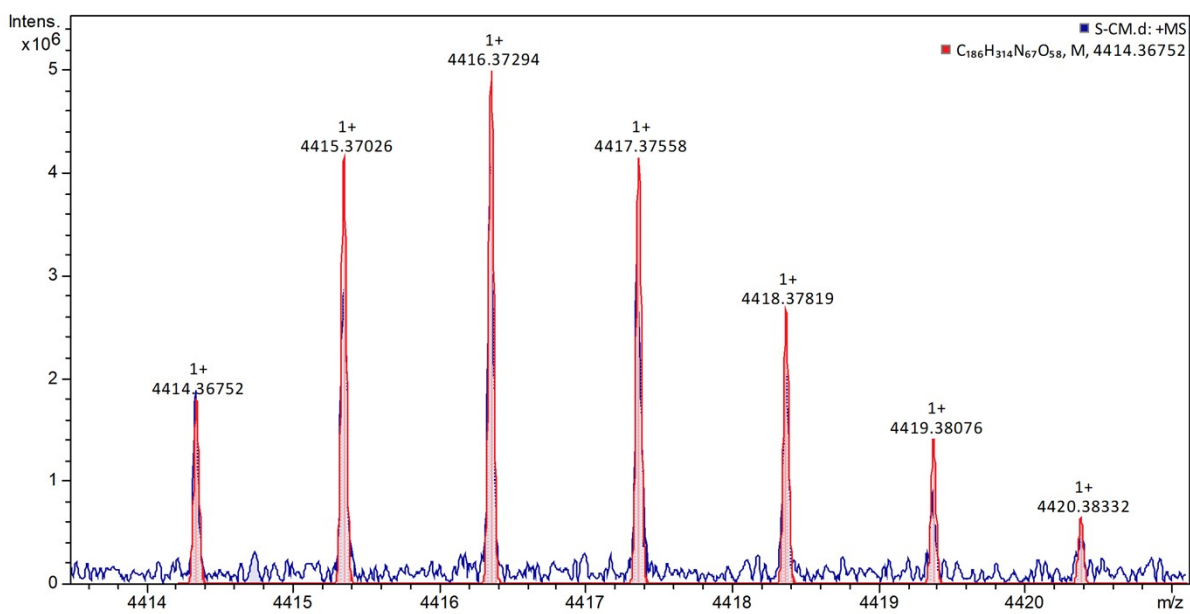


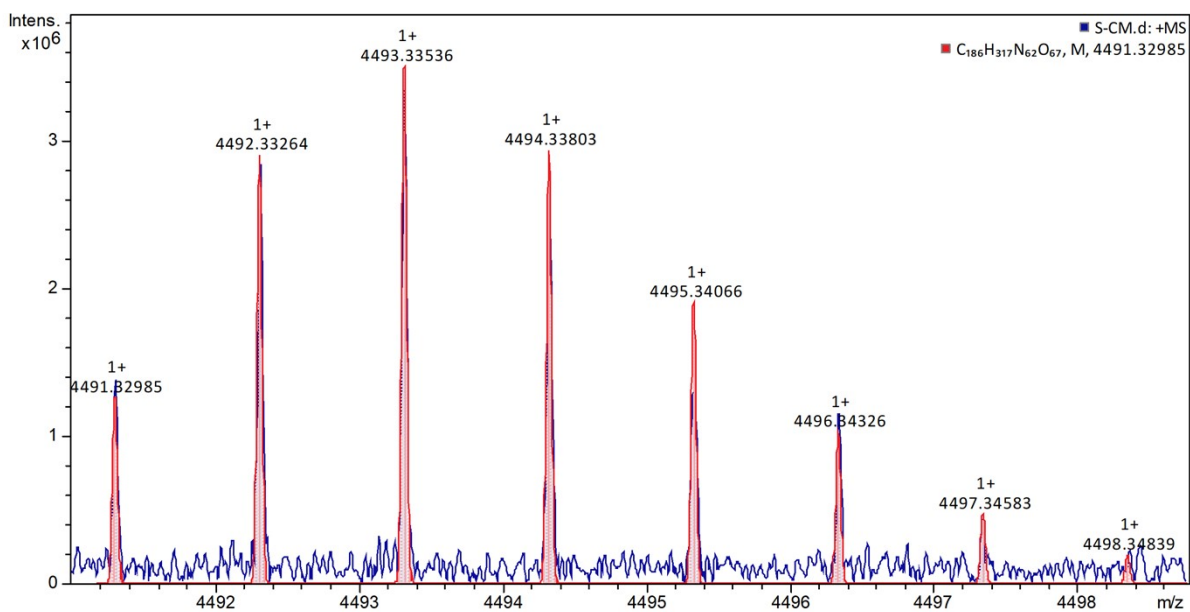
SUPPORTING INFORMATION

Supplementary Figure S1: MALDI-FT-ICR comparison of experimental (blue) and isotope simulated (red) mass spectra of 24 identified *Bacillus atrophaeus* spore proteins

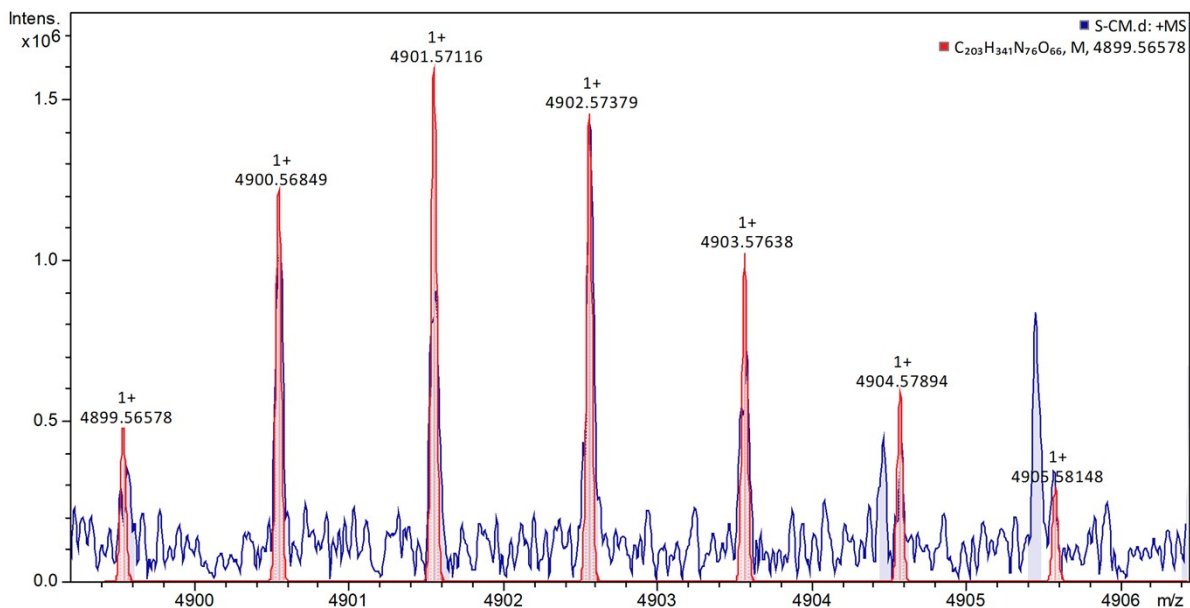
(1) Hypothetical protein DX926_04085



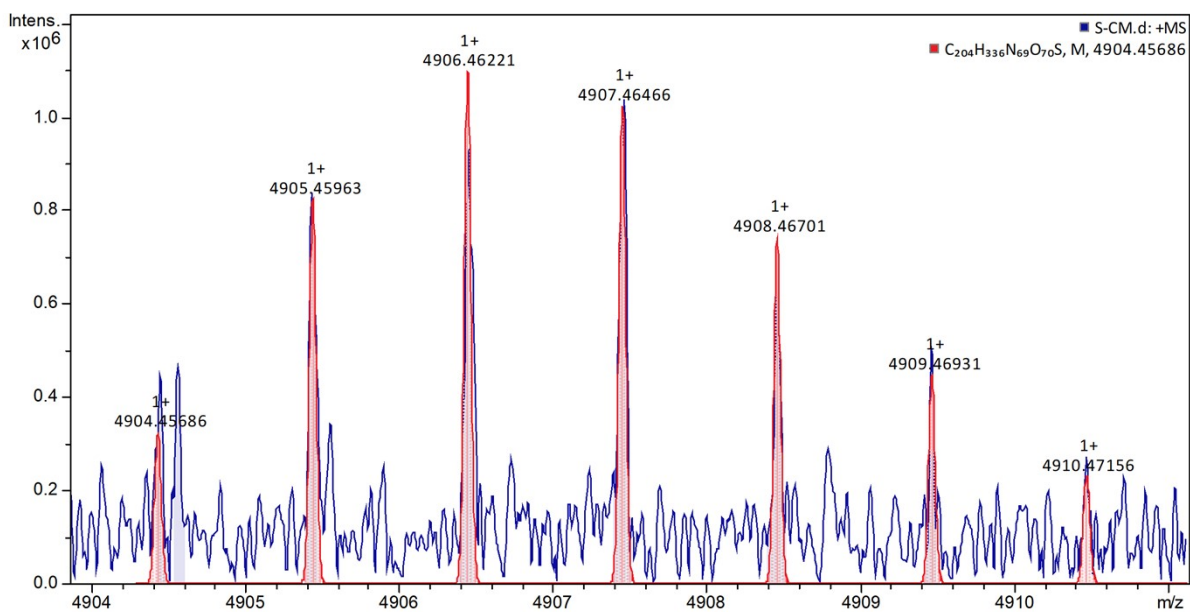
(2) Small, acid-soluble spore protein L



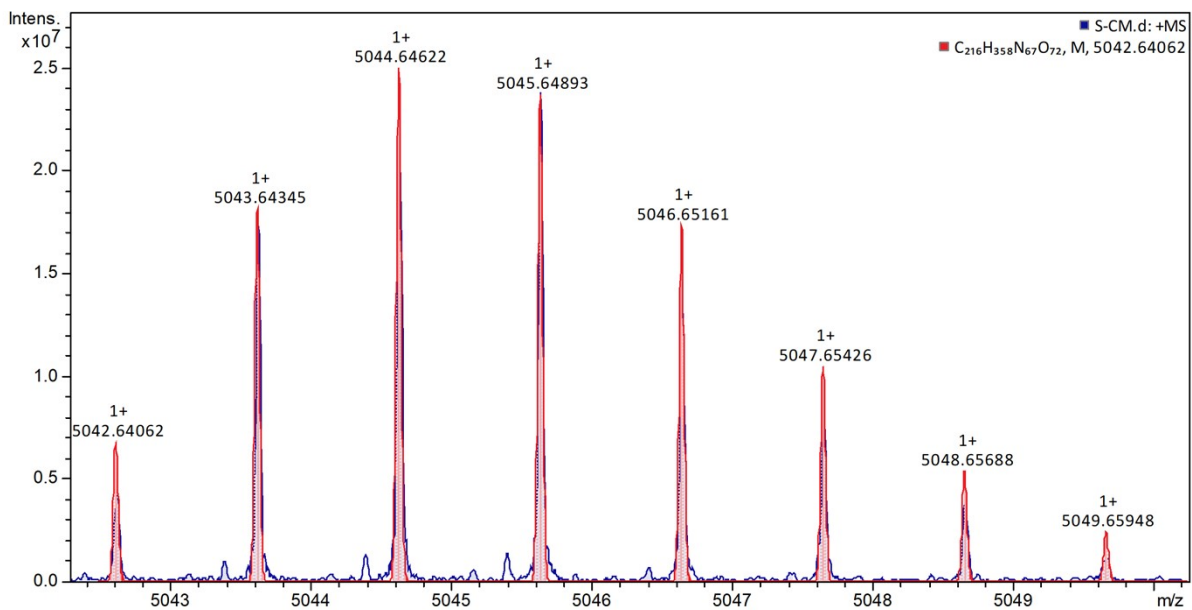
(3) YpzI family protein



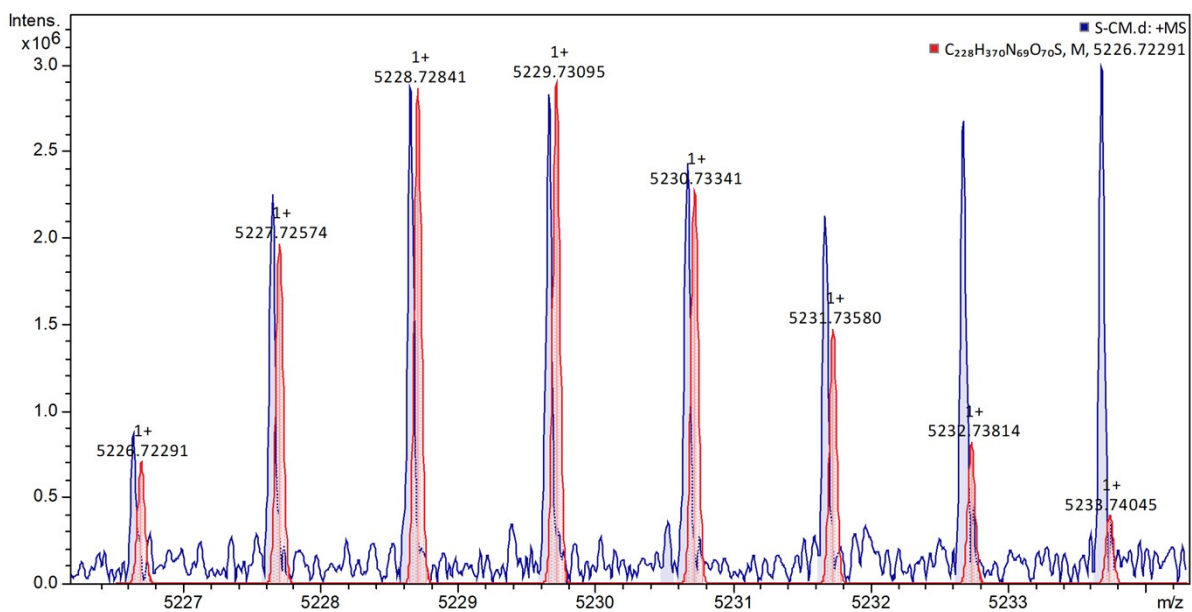
(4) YuzL family protein



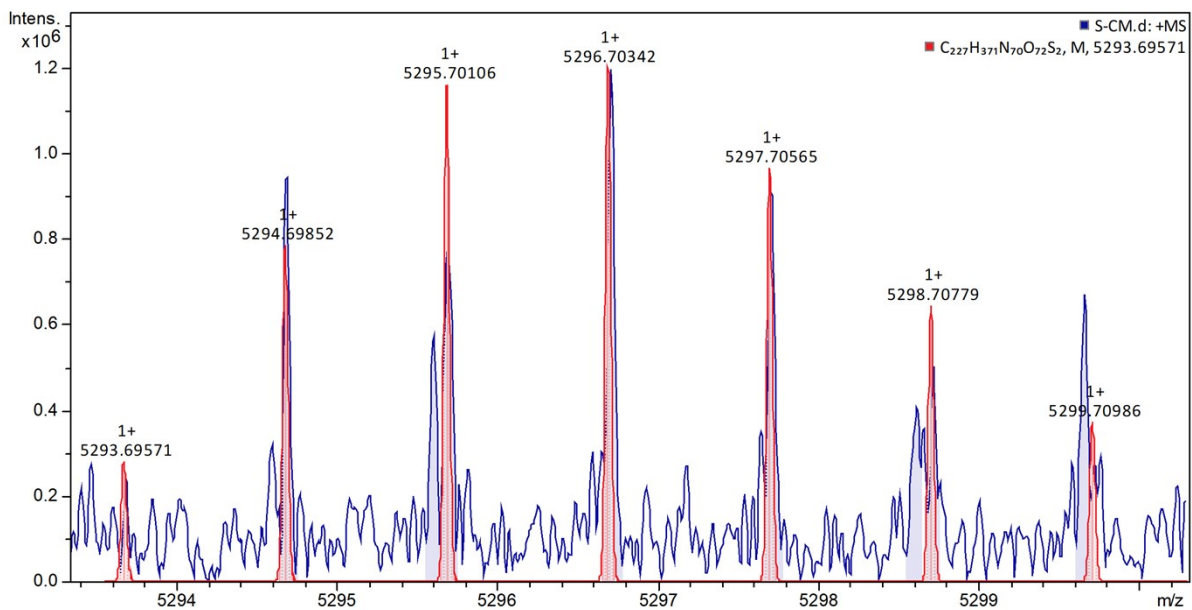
(5) Small, acid-soluble spore protein J



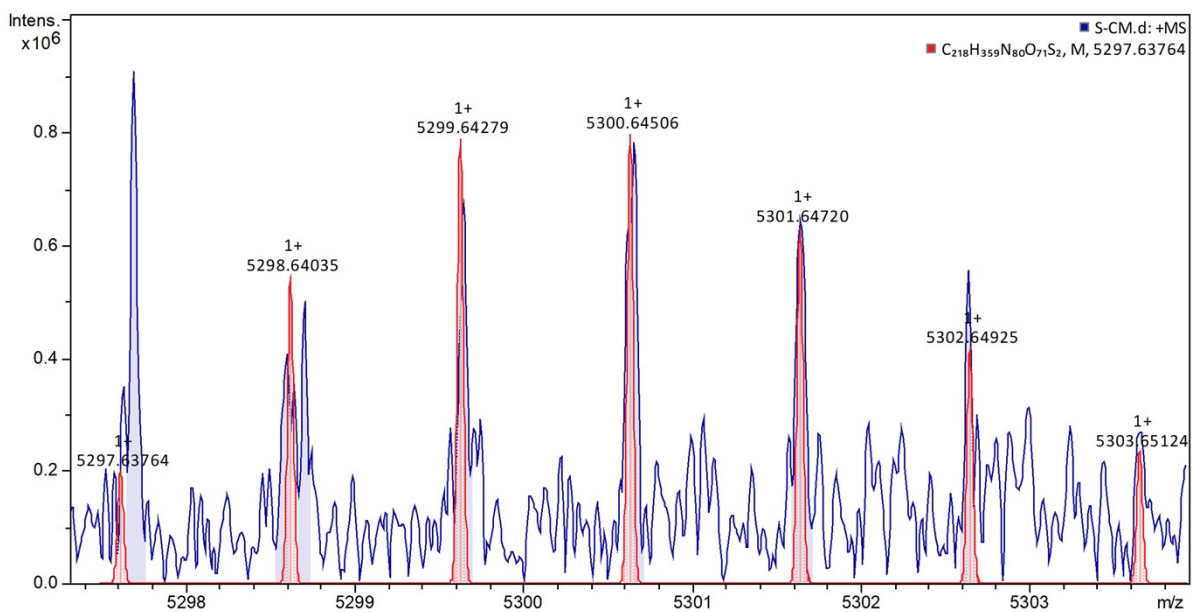
(6) Hypothetical protein B4144_3326



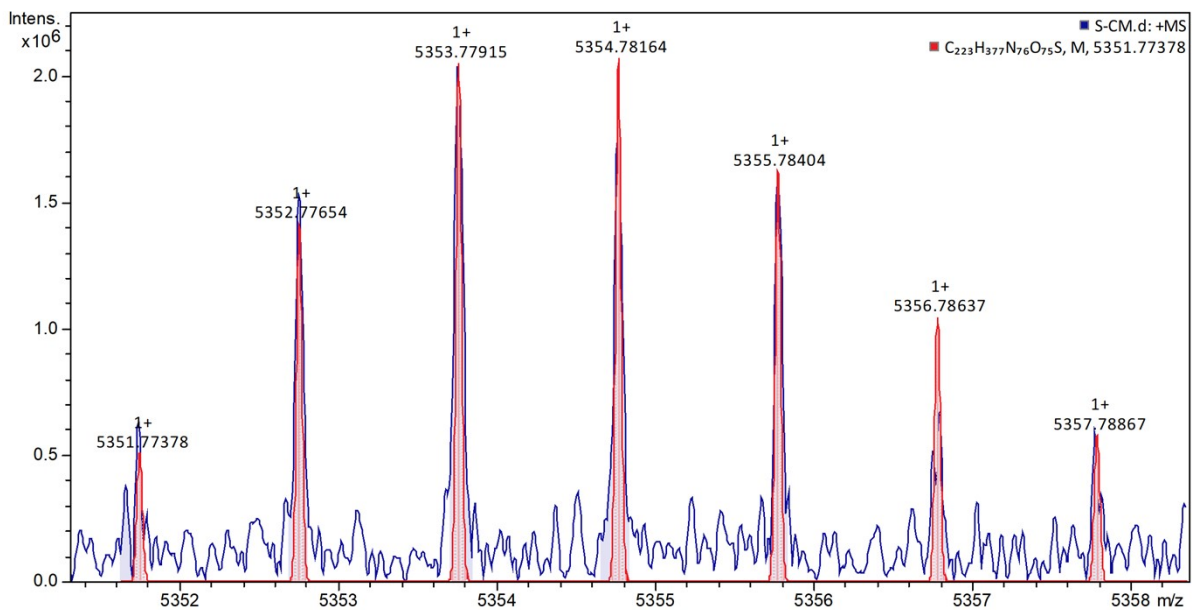
(7) Small, acid-soluble spore protein N



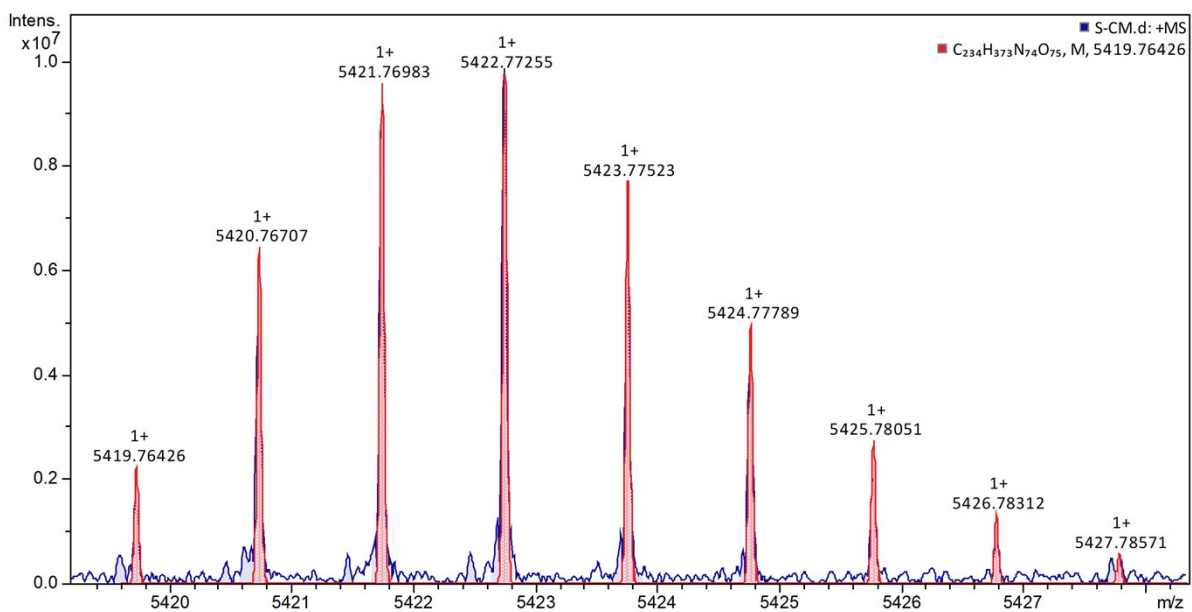
(8) Small, acid-soluble spore protein P



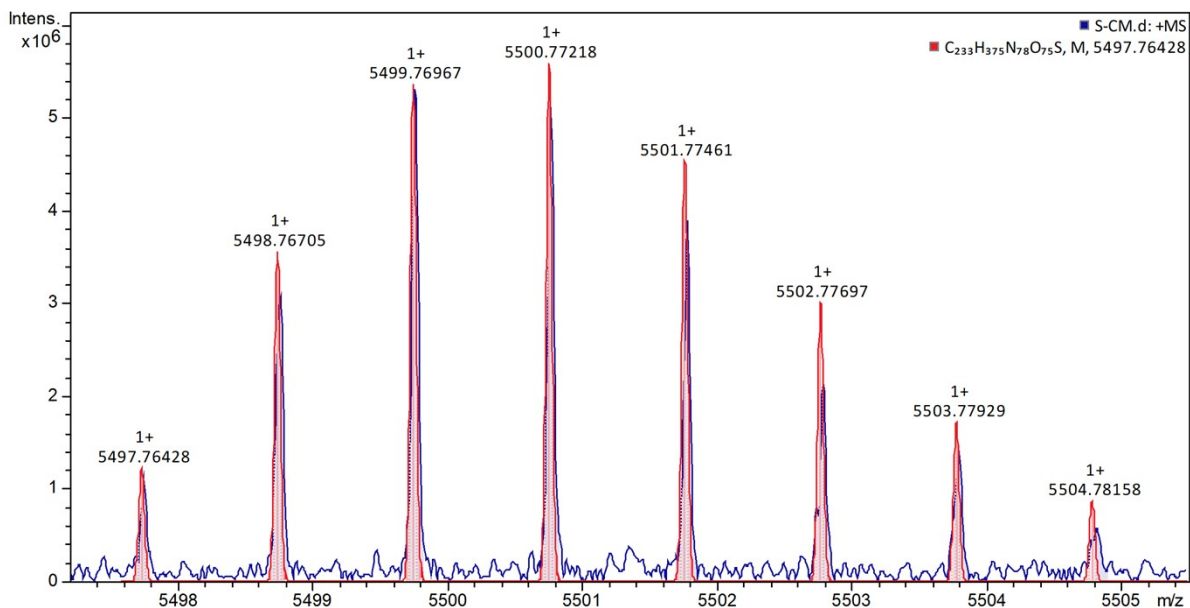
(9) Small acid-soluble spore protein O



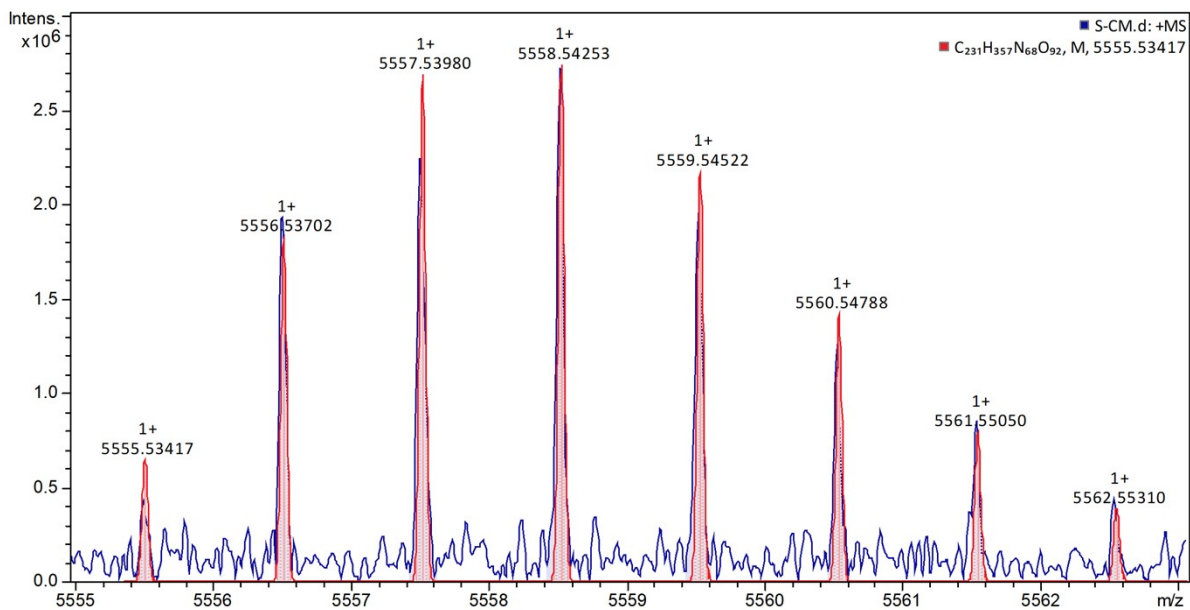
(10) Hypothetical protein



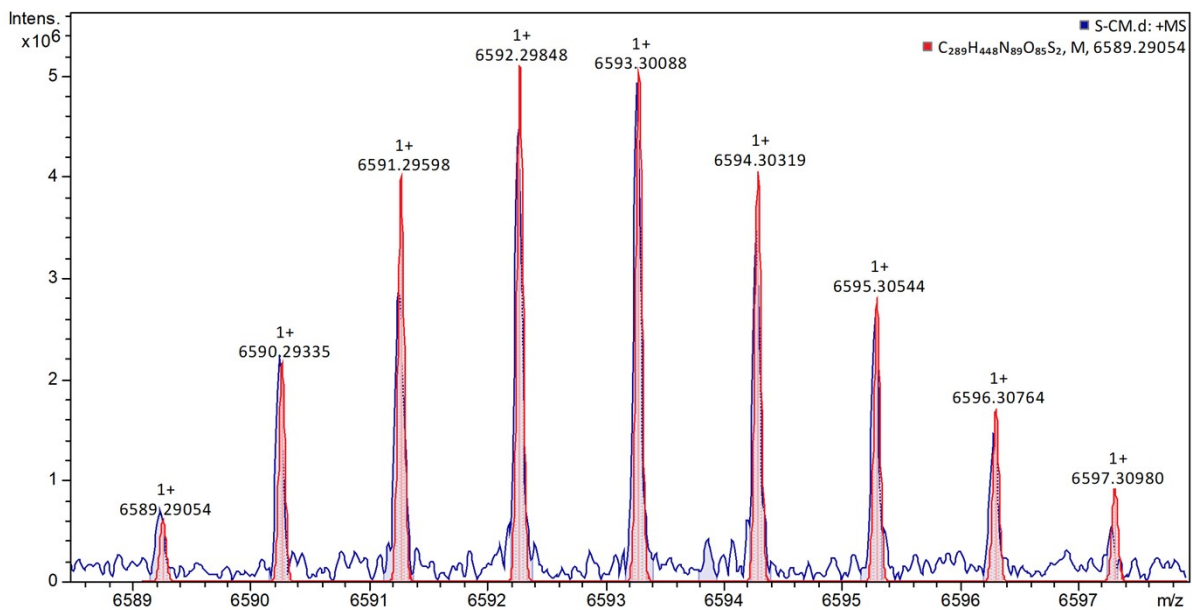
(11) Small, acid-soluble spore protein K



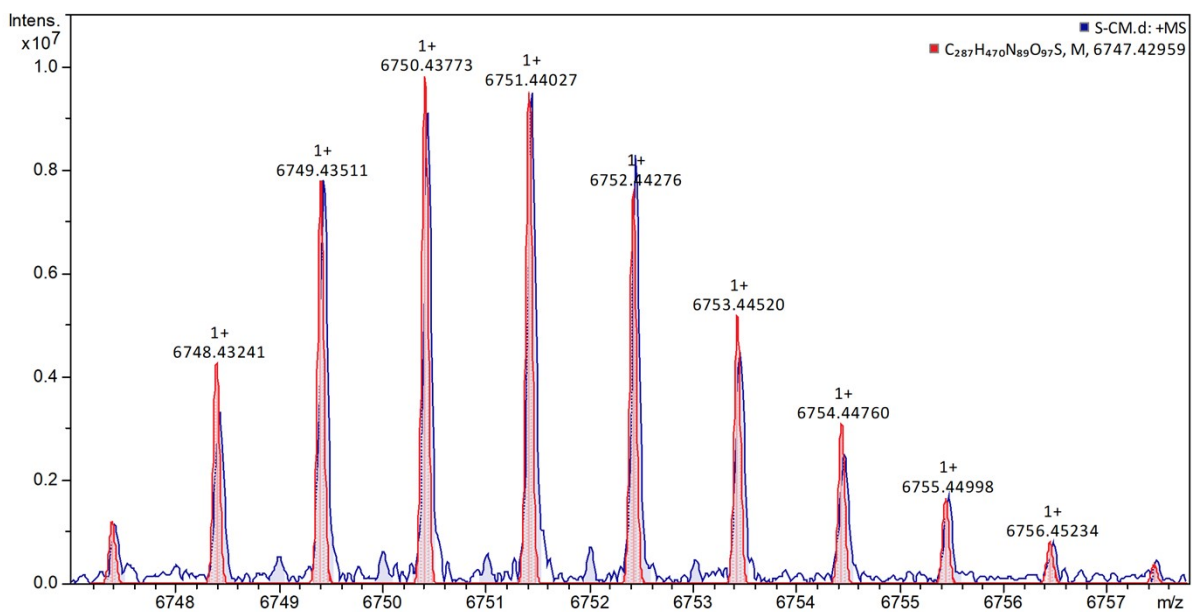
(12) DUF4025 domain-containing protein



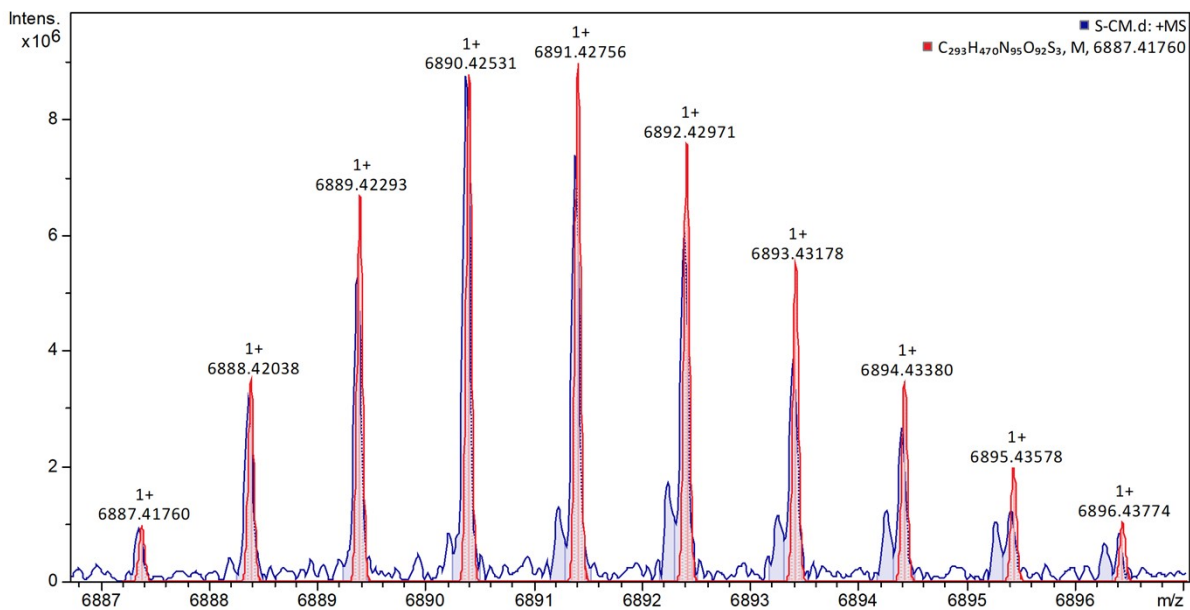
(13) YjzC family protein



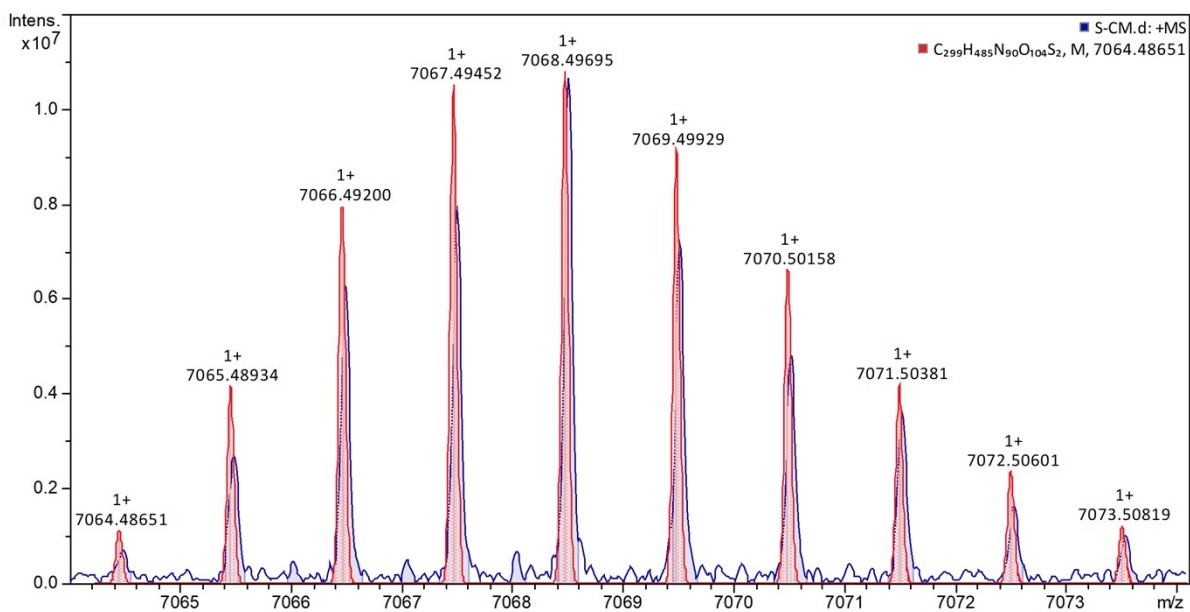
(14) Alpha/beta-type small acid-soluble spore protein



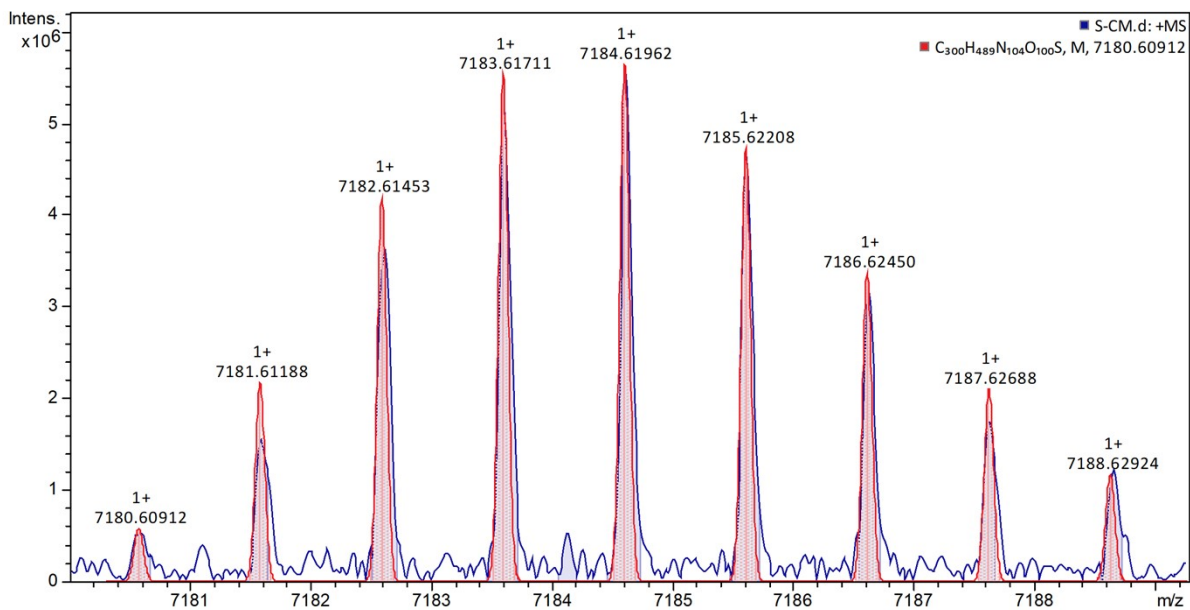
(15) Small, acid-soluble spore protein, alpha/beta type



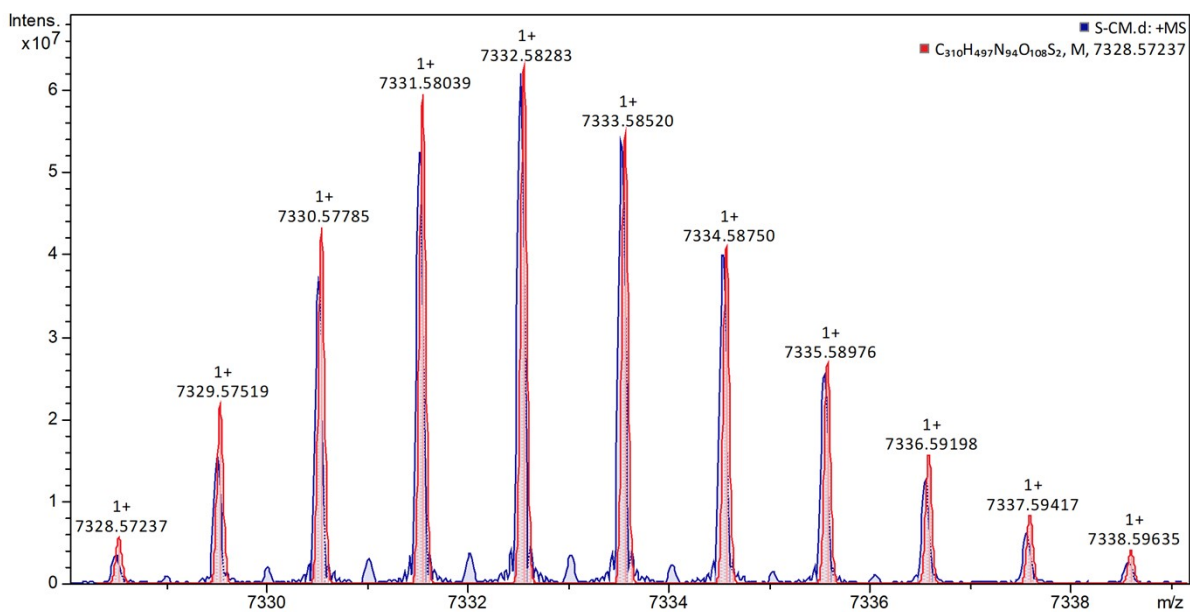
(16) Alpha/beta-type small acid-soluble spore protein



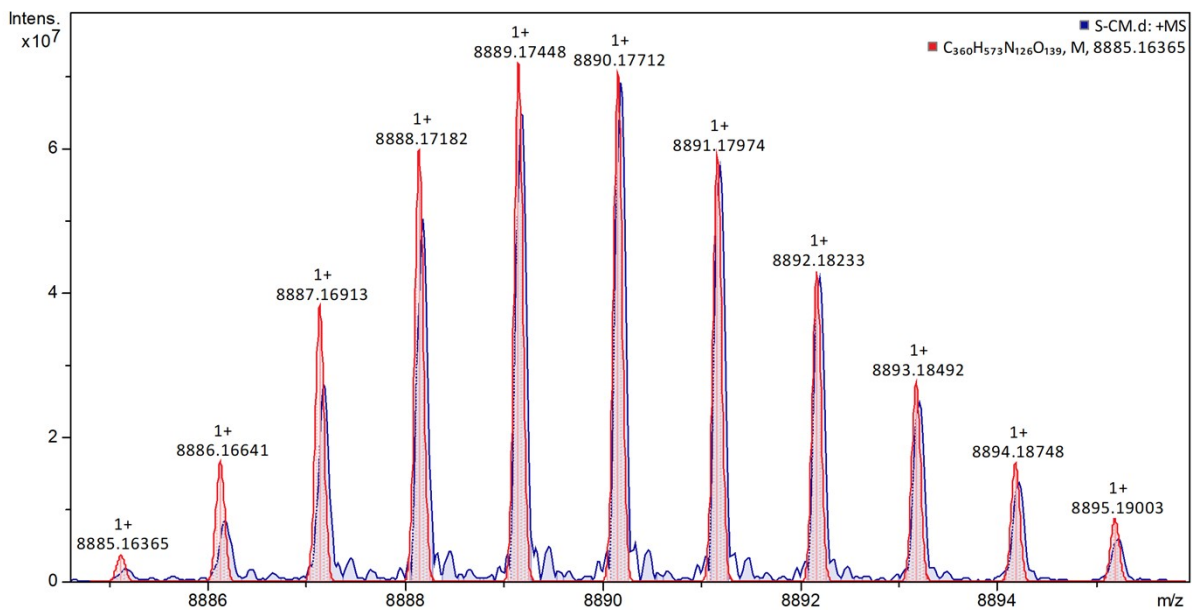
(17) YfhD family protein



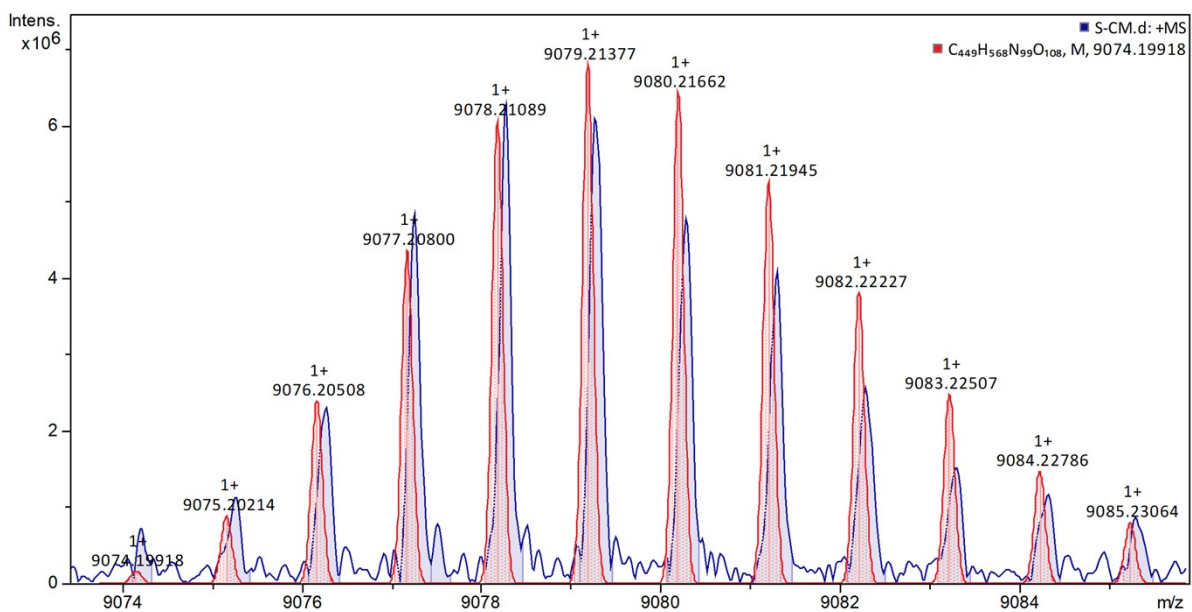
(18) Apha/beta-type small acid-soluble spore protein



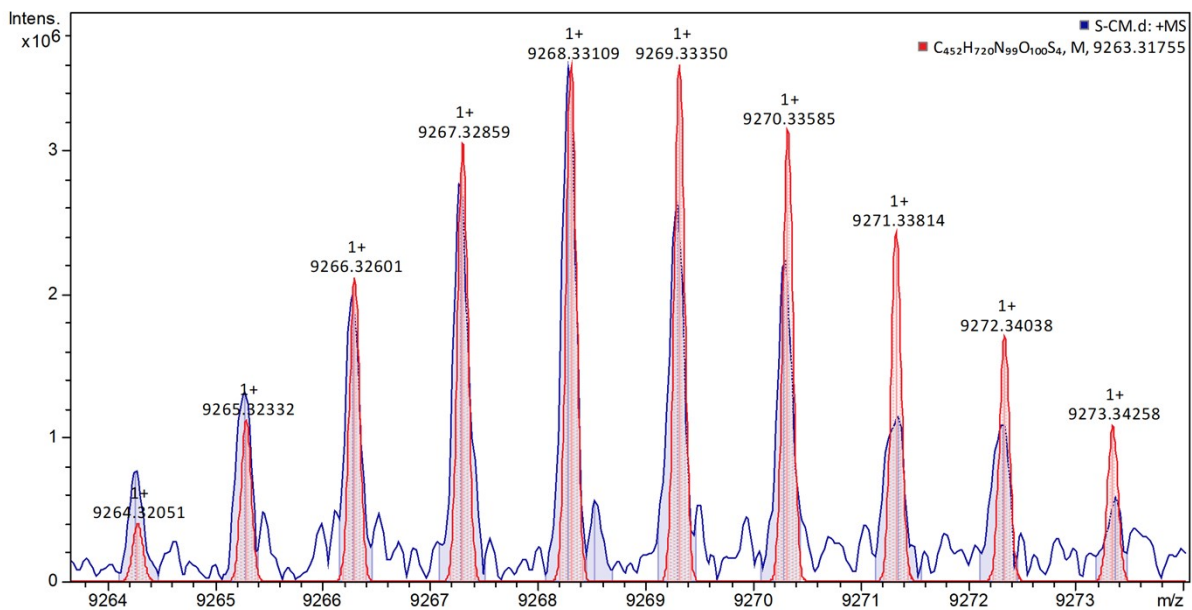
(19) Gamma-type small acid-soluble spore protein



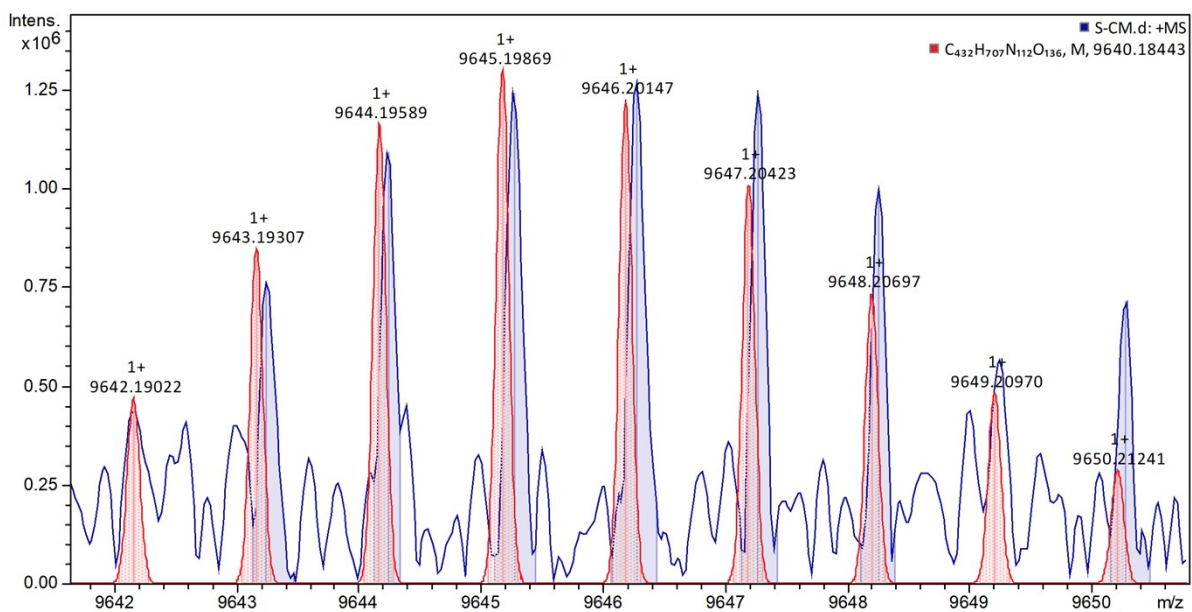
(20) Spore coat protein



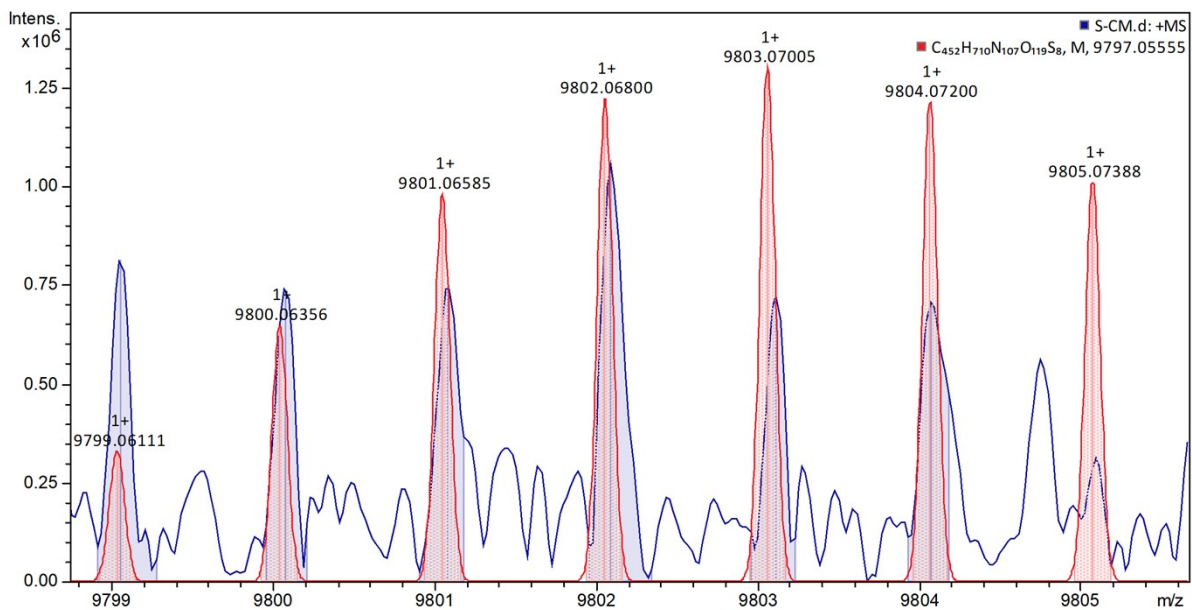
(21) Putative membrane protein



(22) Hypothetical protein



(23) Formate/nitrite transporter family protein



(24) Excalibur calcium-binding domain-containing protein

