

## Supporting information

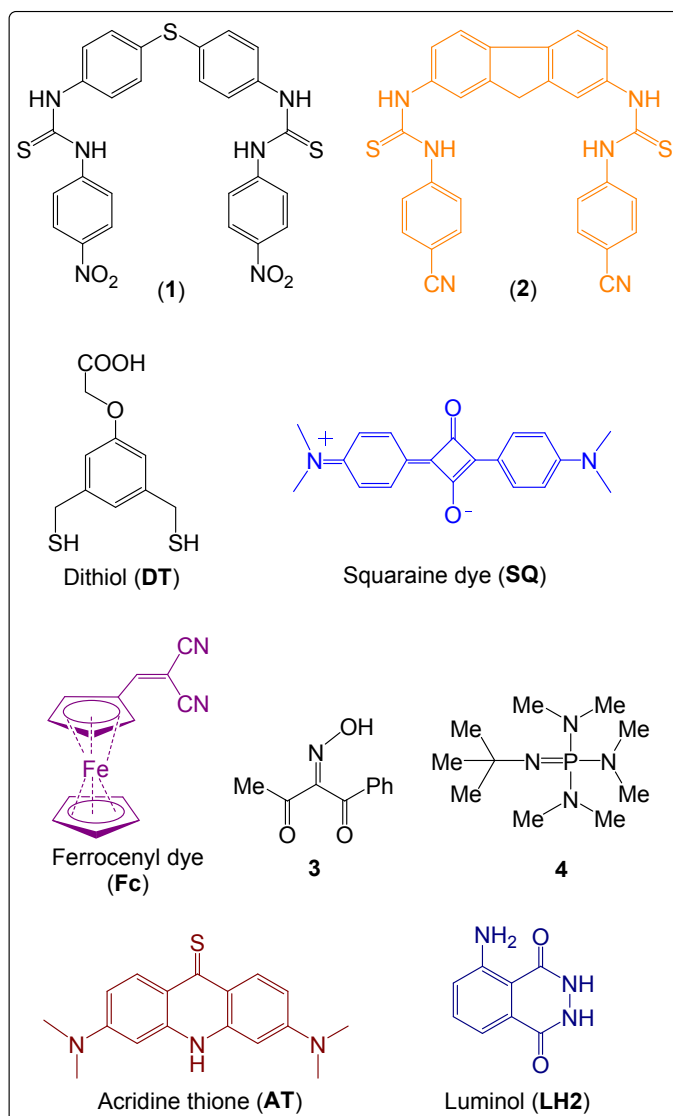
### **Design and development of a prototype for specific naked-eye detection of blister and nerve agents**

Vinod Kumar\*

*Process and Technology Development Division, Defence Research and Development Establishment, Jhansi Road, Gwalior 474002, MP, India.*

*E-mail: vkpal77@yahoo.co.in.*

<b>Contents</b>	<b>Page</b>
1. Structures of chemical probes used in CW sensing methods.....	S2



**Figure S1.** Chemical probes and reagents used in CW sensing methods.