

Fig.S1-Chemical structure of 10 PAHs (1) fluoranthene (Flu), (2) pyrene (Pyr), (3) benzo(a)anthracene (Baa), (4) chrysene (Chr), (5) benzo(b)fluoranthene (Bbf), (6) benzo(k)fluoranthene (Bkf), (7) benzo(a)pyrene (Baf), (8) dibenzo(ah)anthracene (Daa), (9) benzo(ghi)perylene (Bpe), (10) indeno(1,2,3-cd)pyrene (Ipy)

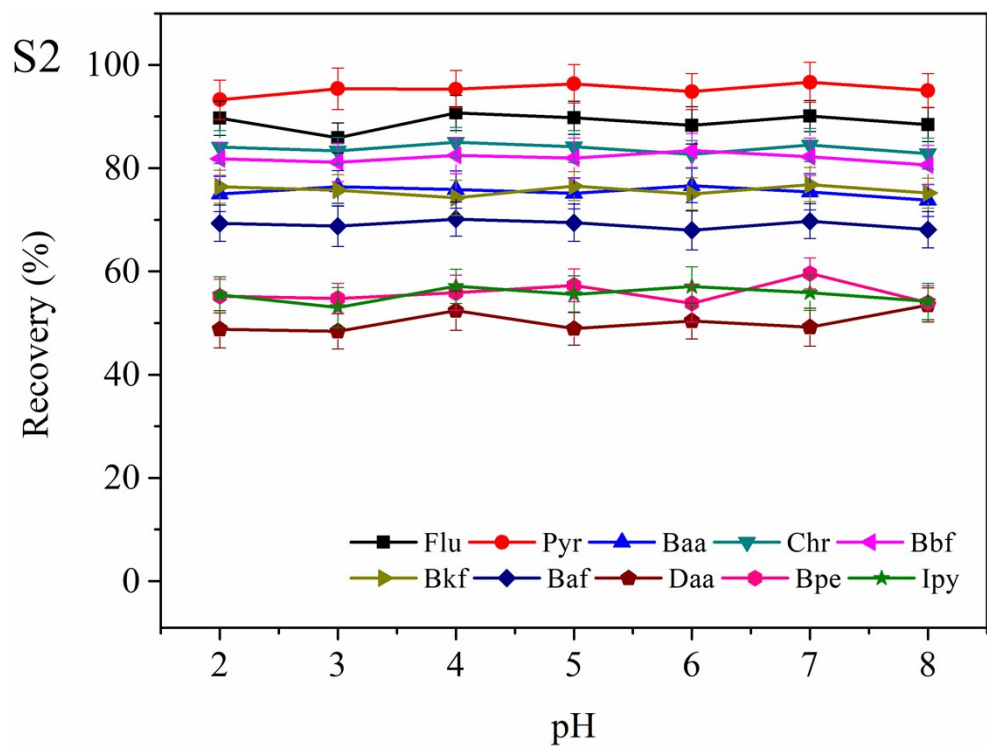


Fig. S2 Effect of sample solution pH

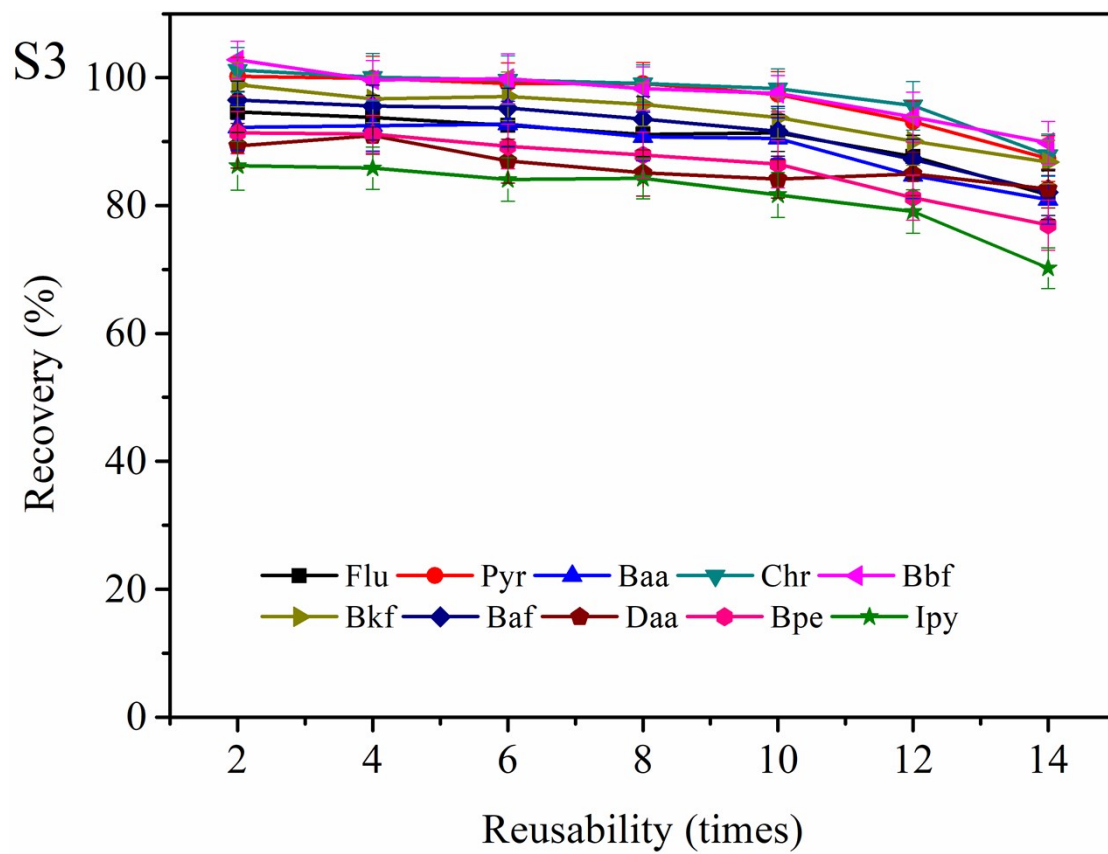


Fig. S3 Reusability of magnetic adsorbent

