

Supplementary Information

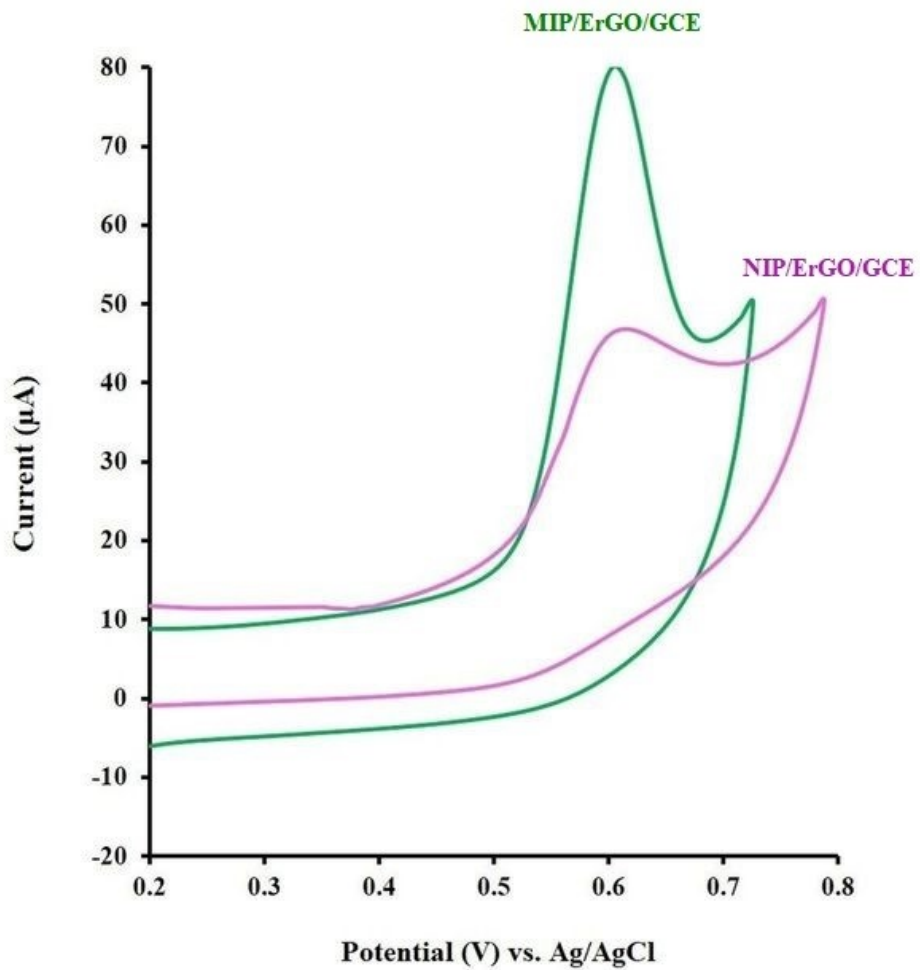


Fig. S1

CV of 100 μM NVP at NIP/ErGO/GCE and MIP/ErGO/GCE in a solution containing NaOH (0.01 M) and KCl (0.1 M)

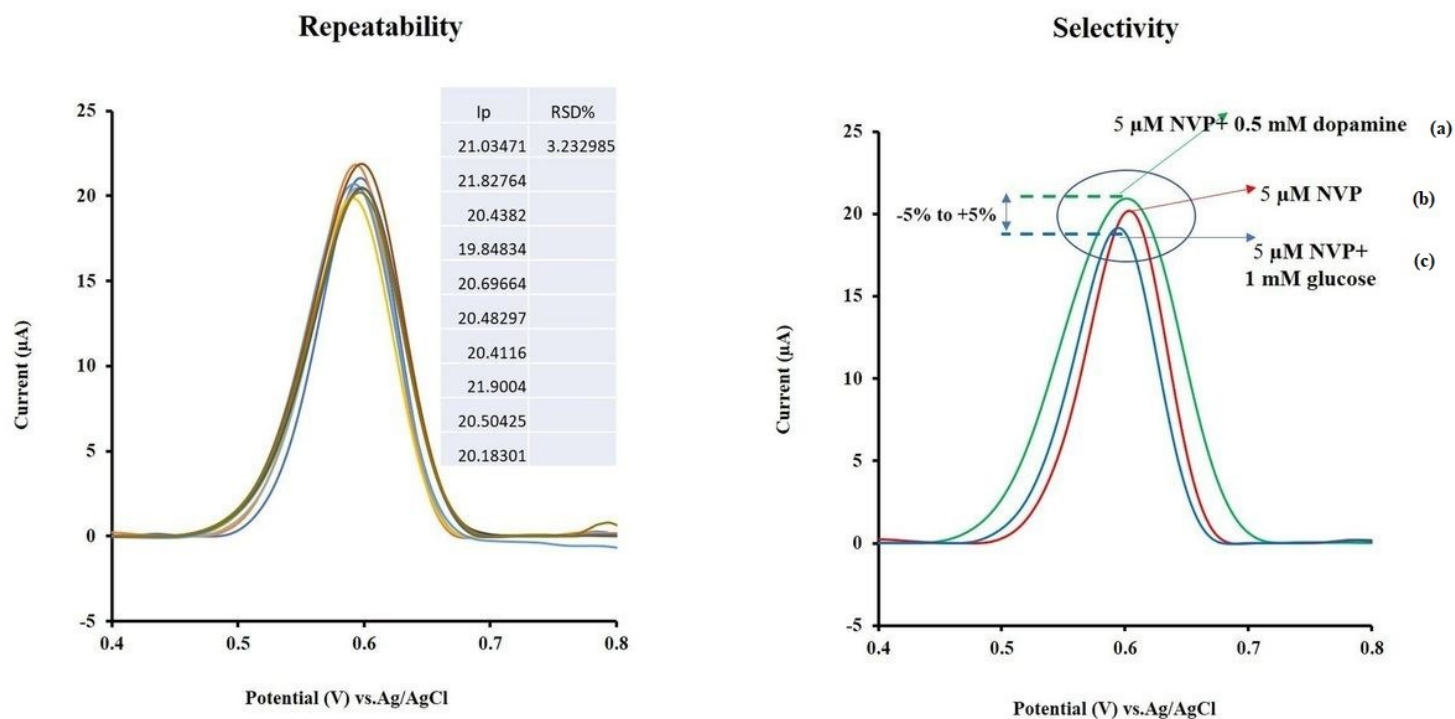


Fig. S2

Repeatability: DPASV of 5 μ M of NVP at MIP/ErGO/GCE at in a solution containing NaOH (0.01 M) and KCl (0.1 M). **b)** repeated for 10 times for investigating of repeatability of modified electrode

Selectivity: DPASV of 5 μ M of NVP **(b)** at MIP/ErGO/GCE in a solution containing NaOH (0.01 M) and KCl (0.1 M) in the presence of (a) 0.5 mM dopamine and (c) 1mM glucose for investigating of selectivity of modified electrode