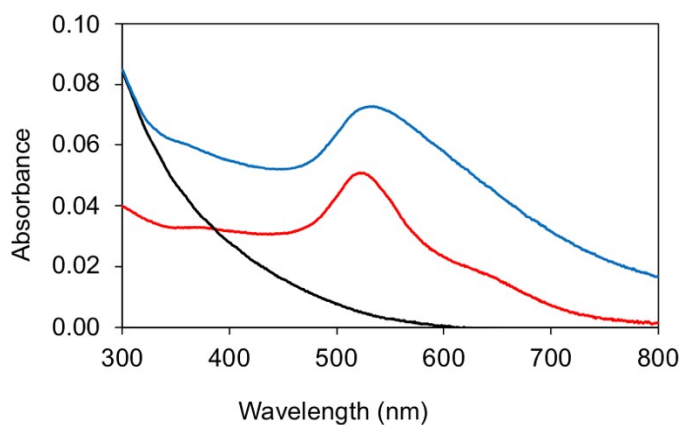
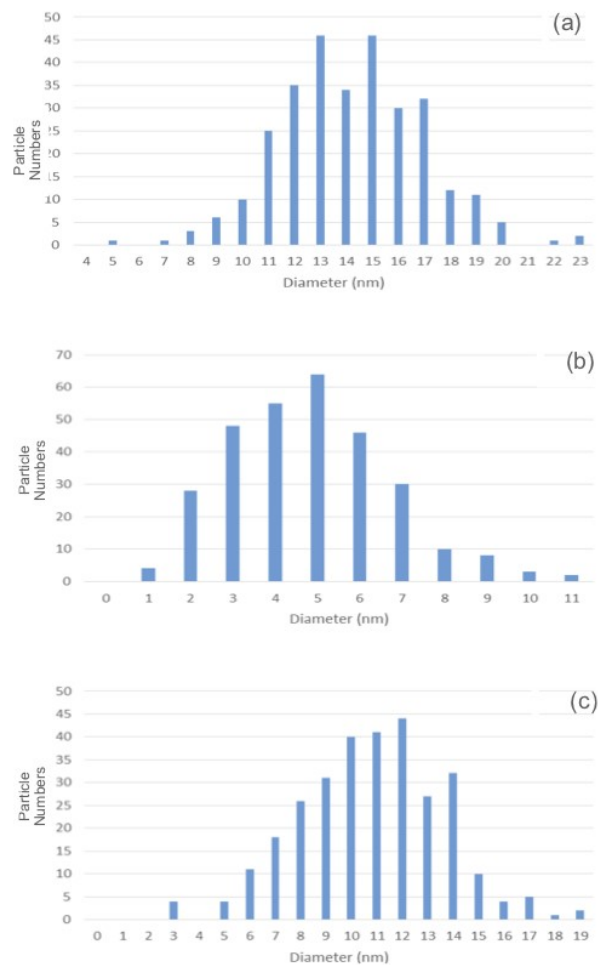


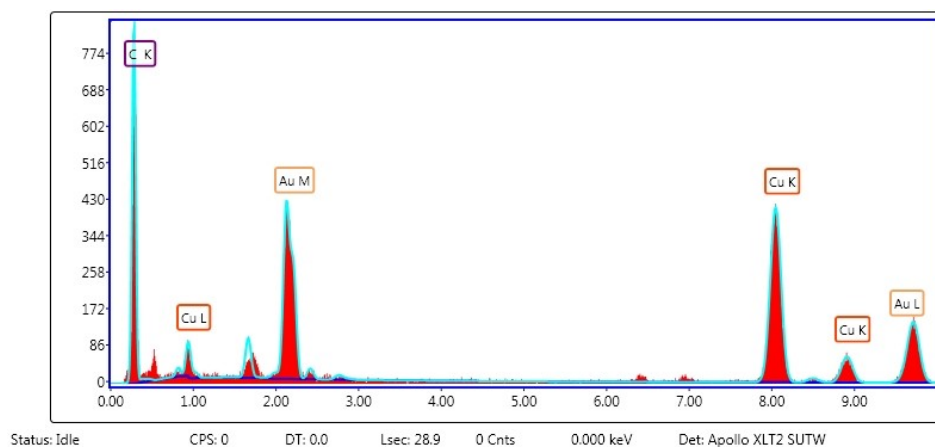
ESI 1. Scheme of the Electrochemical Cell



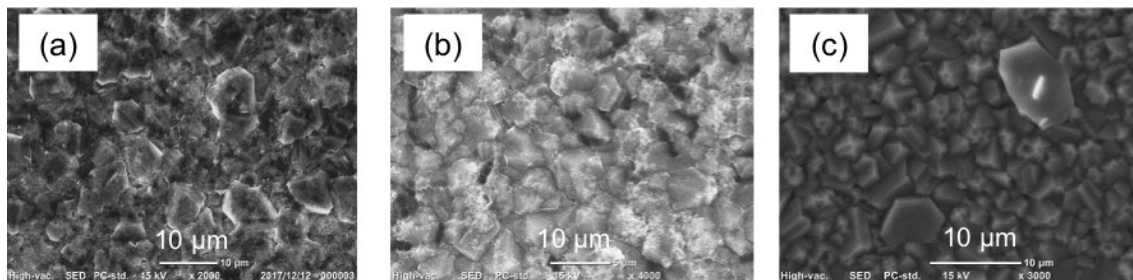
ESI 2. UV-Vis spectra of the prepared gold nanoparticles (red line), copper nanoparticles (black line), and Cu@Au nanoparticles (blue line).



ESI 3. Particle Distributions of (a) gold, (b) copper, and (c) Au@Cu nanoparticles from TEM measurements, determined by using ImJ software



ESI 4. EDX spectra of Cu@Au nanoparticles, measured together with TEM



ESI 5. SEM Images of the surface of boron-doped diamond modified with Cu@Au nanoparticles (a), gold nanoparticles (b), and copper nanoparticles (c).

