

Direct determination of nutrient elements in plant leaves by double pulse laser-induced breakdown spectroscopy: evaluation of calibration strategies using direct and inverse models for matrix-matching

Kleydson Stenio^{*(a,b,c)}, Vinicius Câmara Costa^(a), Carla Pereira de Moraes^(a,d), Aida Bebechibuli Magalhães^(b), Débora Marcondes Bastos Pereira Milori^{(a)*}

(a) Embrapa Instrumentation, São Carlos, São Paulo State, Brazil, 13560-970, Brazil.

(b) Agrorobótica, São Carlos, São Paulo State, Brazil, 13571-512, Brazil.

(c) Department of Biotechnology, Federal University of São Carlos, São Carlos, SP, Brazil.

(d) São Carlos Institute of Chemistry, University of São Paulo, São Carlos, SP, Brazil.

*Corresponding authors. E-mails:

kleydson@estudante.ufscar.br

debora.milori@embrapa.br

Chapter Table

Fig. S1. Pearson's correlation graphs to the emission line Ca II 393.43 nm and Ca II 396.96 nm.

Fig. S2 (a-f). Calibration and prediction set samples using direct and inverse model: (a) Mg direct model; (b) Mg inverse model; (c) Mn direct model; (d) Mn inverse model; (e) P direct model; and (f) P inverse model.

Fig. S1

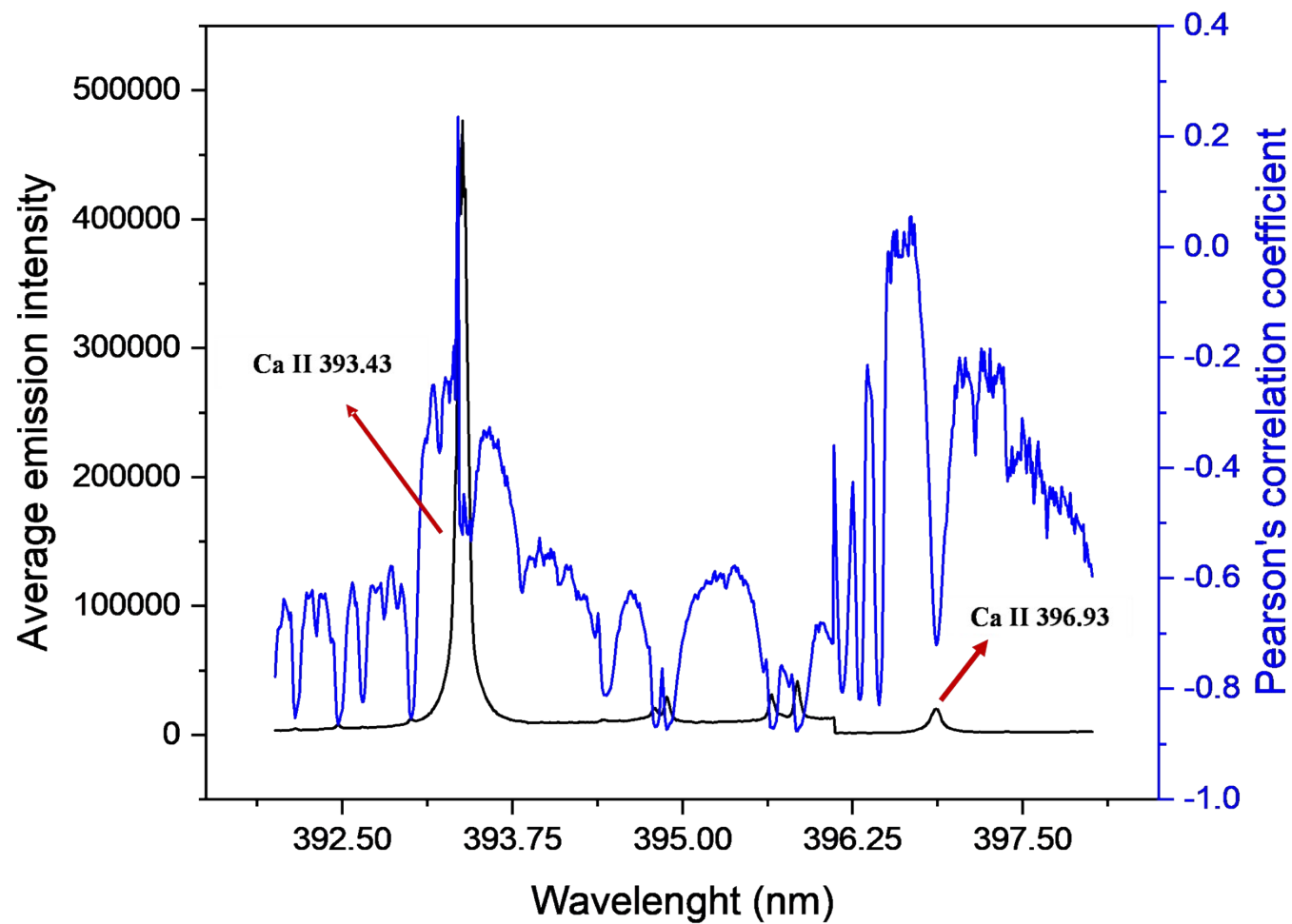


Fig. S2 (a-b)

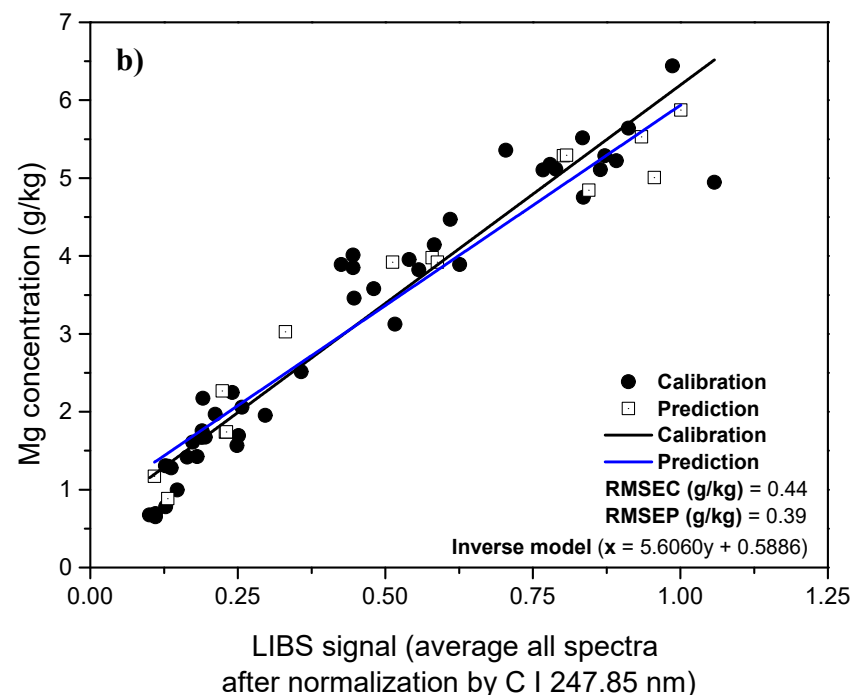
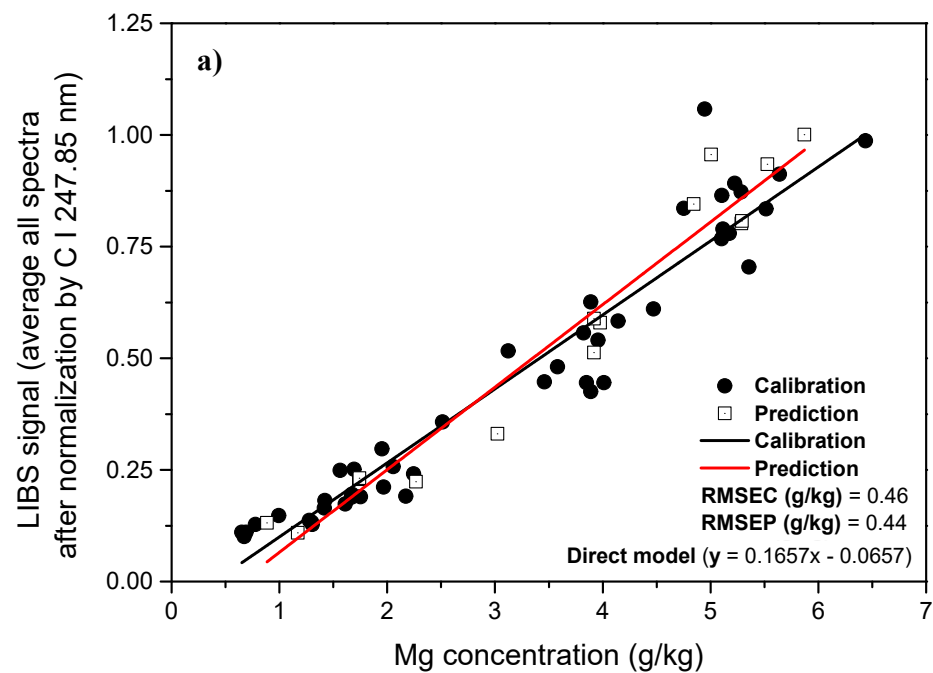


Fig. S2 (c-d)

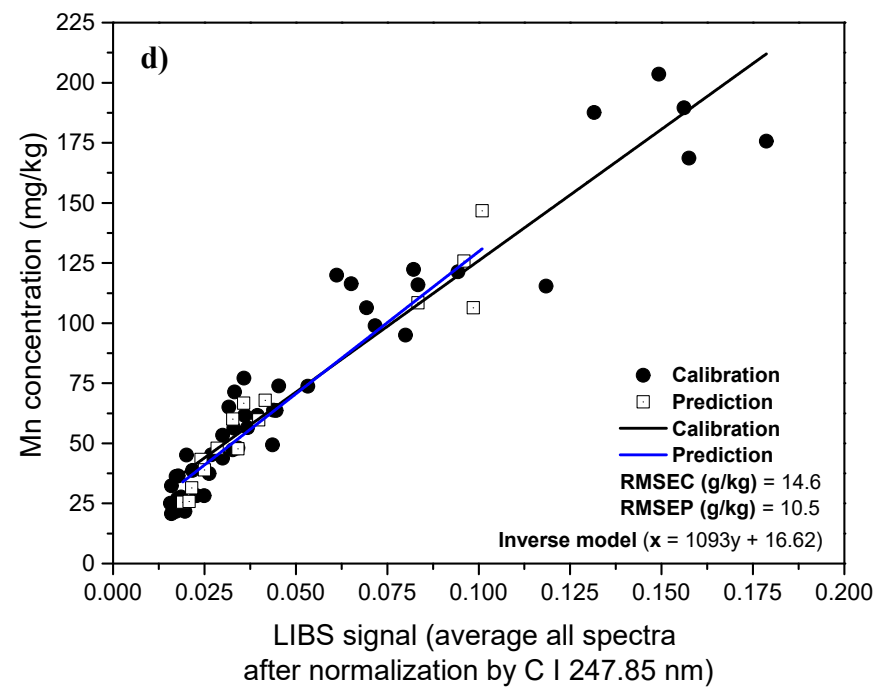
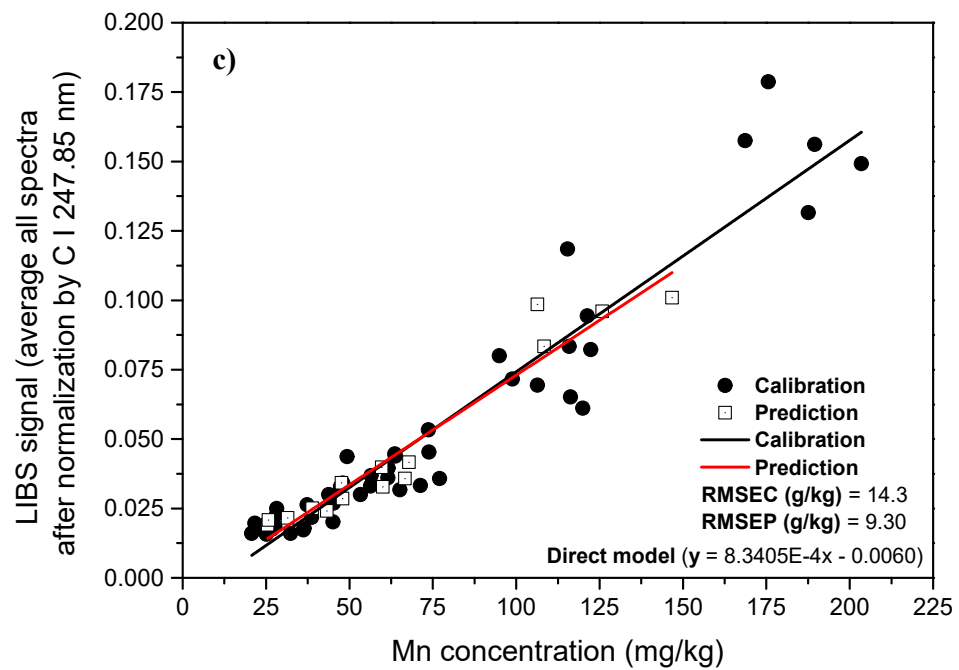


Fig. S2 (e-f)

