

Supporting Information

Self-assembled Supramolecular Nanomicelles from Bile Acid-Docetaxel Conjugate are Highly Tolerable with Improved Therapeutic Efficacy

Vedagopuram Sreekanth,^{1,2} Sanjay Pal,^{1,3} Sandeep Kumar,^{1,2} Varsha Komalla,¹ Poonam Yadav,¹ Radhey Shyam,⁴ Sagar Sengupta,⁴ and Avinash Bajaj^{1,*}

1. Laboratory of Nanotechnology and Chemical Biology, Regional Centre for Biotechnology, NCR Biotech Science Cluster, 3rd Milestone Faridabad-Gurgaon Expressway, Faridabad, Haryana, 121001, India.

2. Manipal Academy of Higher Education, Manipal, 576104, India.

3. Kalinga Institute of Industrial Technology, Bhubaneswar, Odisha, 751024, India.

4. National Institute of Immunology, Aruna Asaf Ali Marg, New Delhi, 110067, India.

Vedagopuram Sreekanth: Current address: Brigham and Women's Hospital, Division of Renal Medicine and Engineering, Boston, MA 02115, USA.

Varsha Komalla: Current address: Graduate School of Health, University of Technology, Sydney, Chippendale, NSW 2008, Australia.

Sandeep Kumar: Current address: Translational Tissue Engineering Center, Wilmer Eye Institute and Department of Biomedical Engineering, Johns Hopkins University School of Medicine, Baltimore, MD 21205, USA.

*Corresponding Author:

Email: bajaj@rcb.res.in

Ph: +91-124-2848831

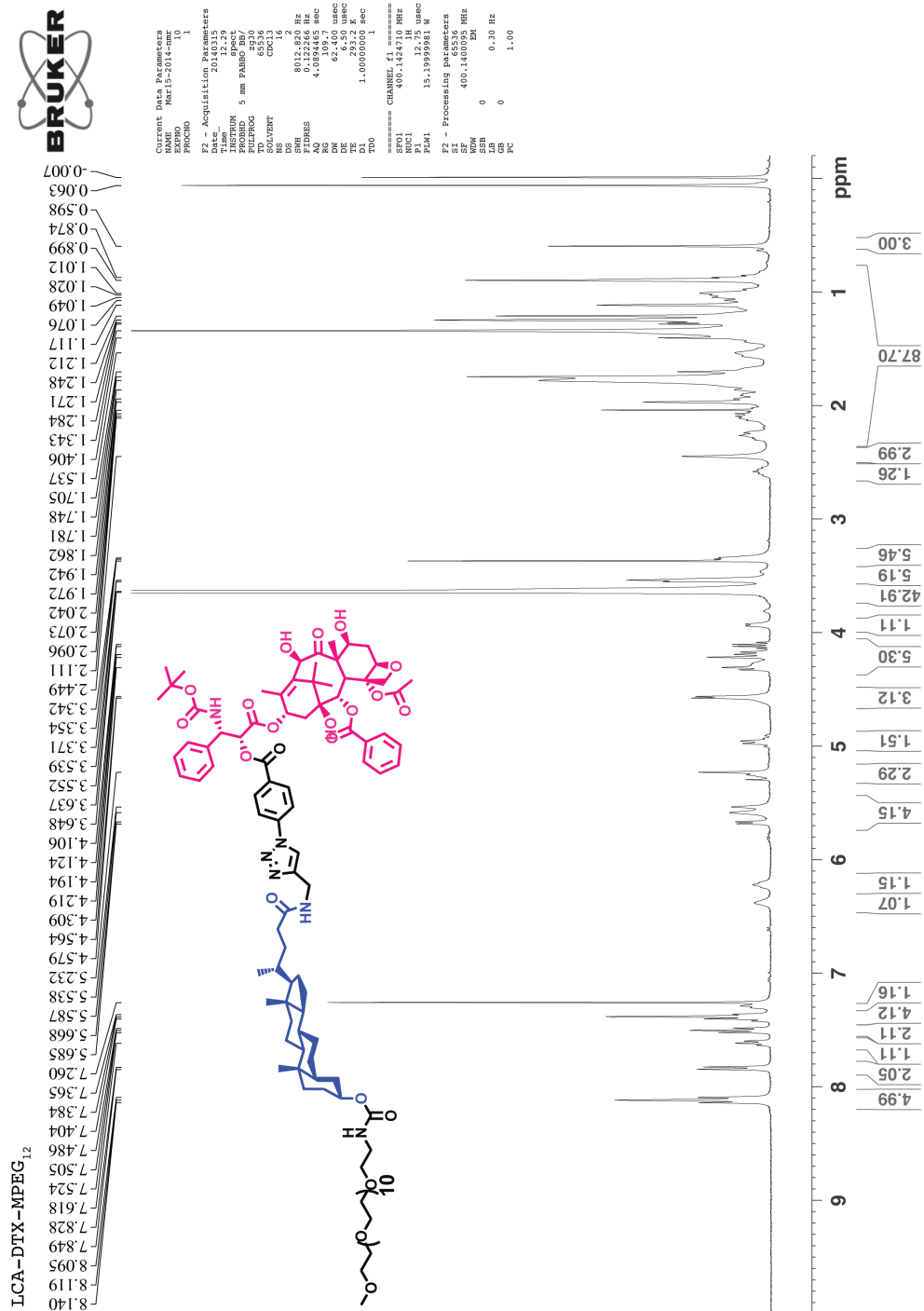


Figure S1. ¹H NMR Spectra of LCA-DTX-PEG.

3

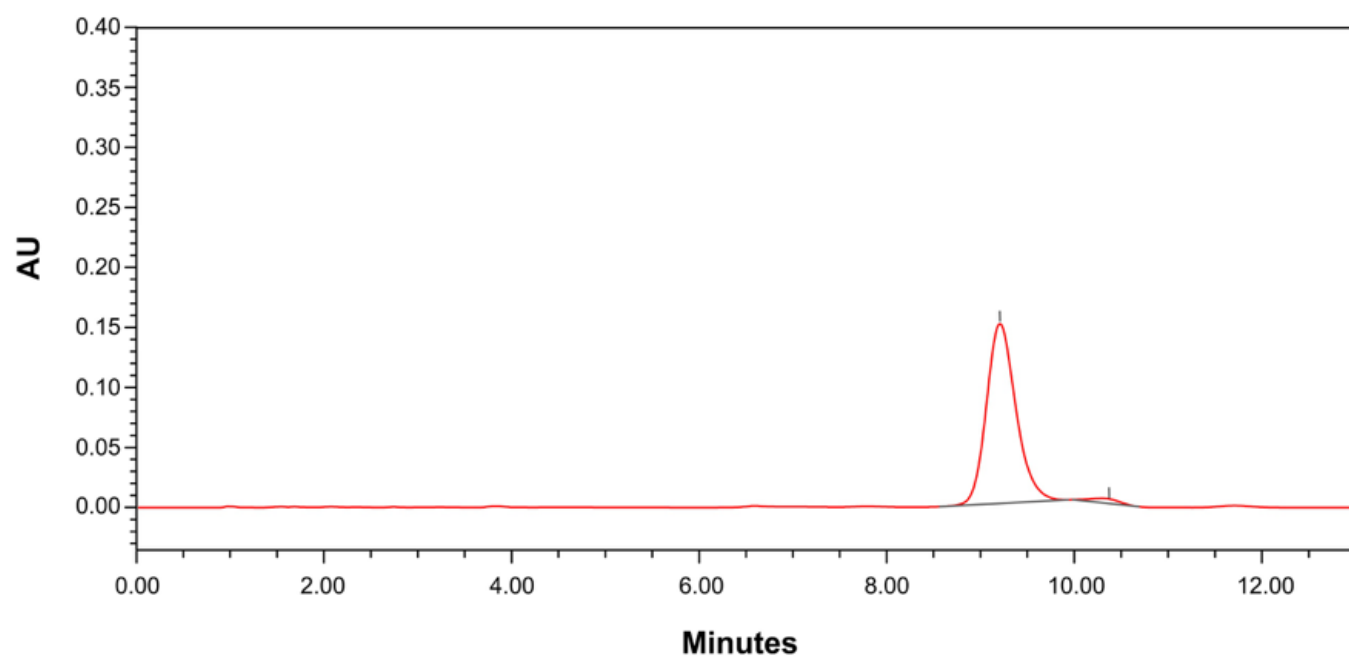


Figure S3. HPLC profile of LCA-DTX-PEG.

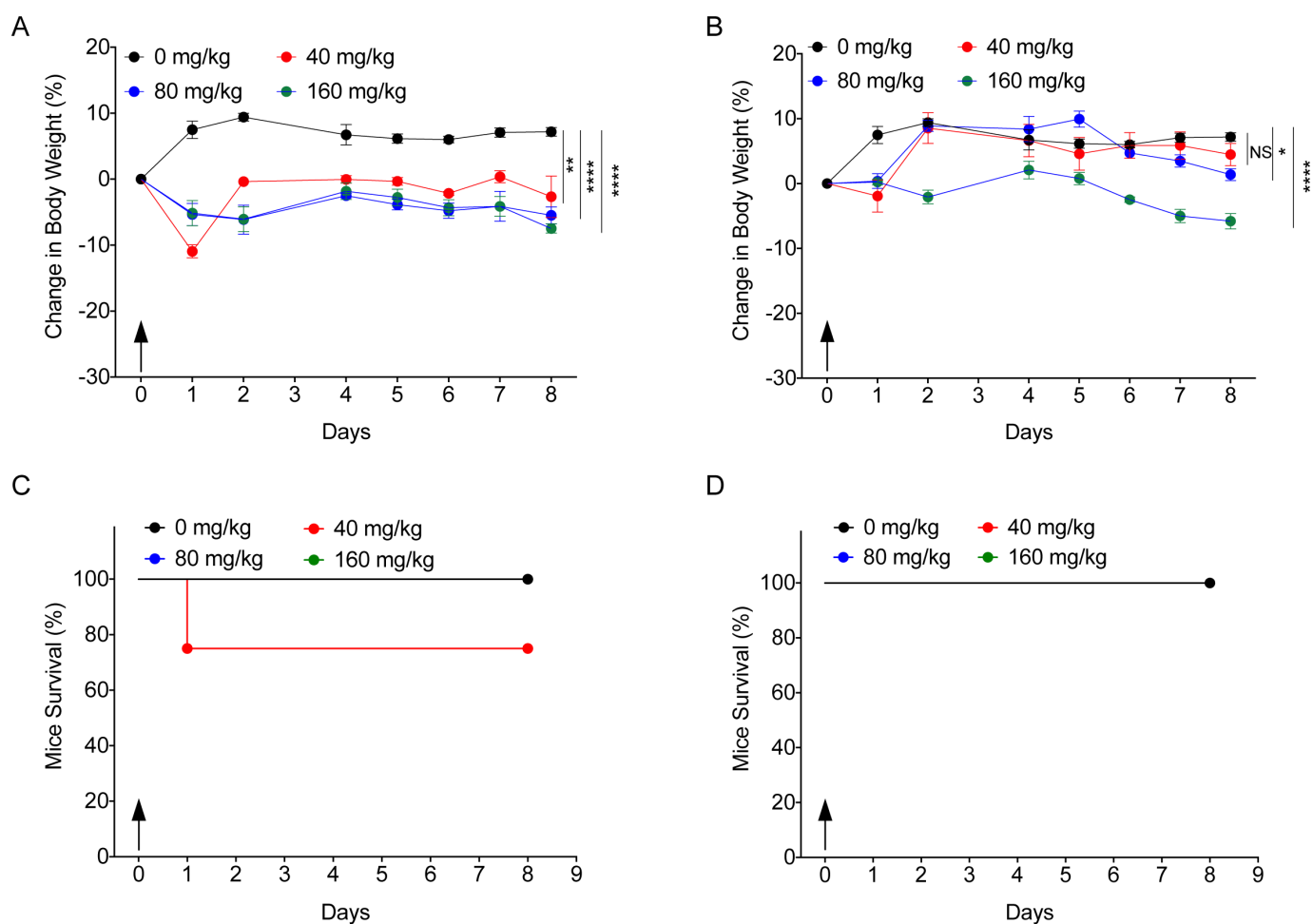


Figure S4. Maximum tolerated dose estimation upon single dose. (A-D) Percentage change in body weight (A, B) and survival (C, D) of BALB/c mice upon single dose administration of 40, 80 or 160 mg/kg (DTX equivalent) of DTX-TS (A, C) and LCA-DTX-PEG NMs (B, D).

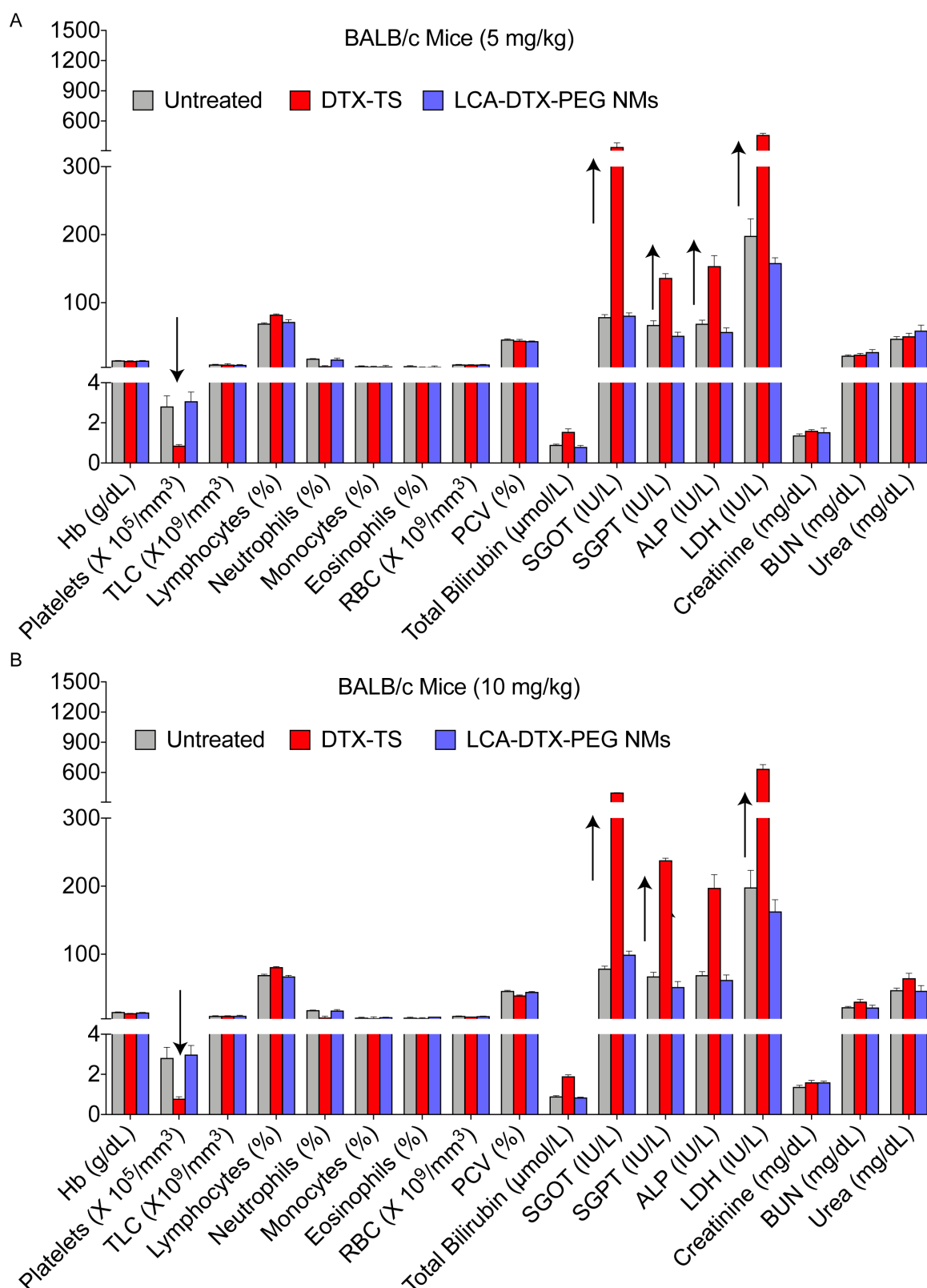


Figure S5. Toxicological studies in BALB/c mice. Changes in critical hematological and serological biomarkers of BALB/c mice after five doses of 5 (A) or 10 (B) mg/kg of DTX-TS and LCA-DTX-PEG NMs. Critical changes in the levels are indicated by upward/ downward arrow.

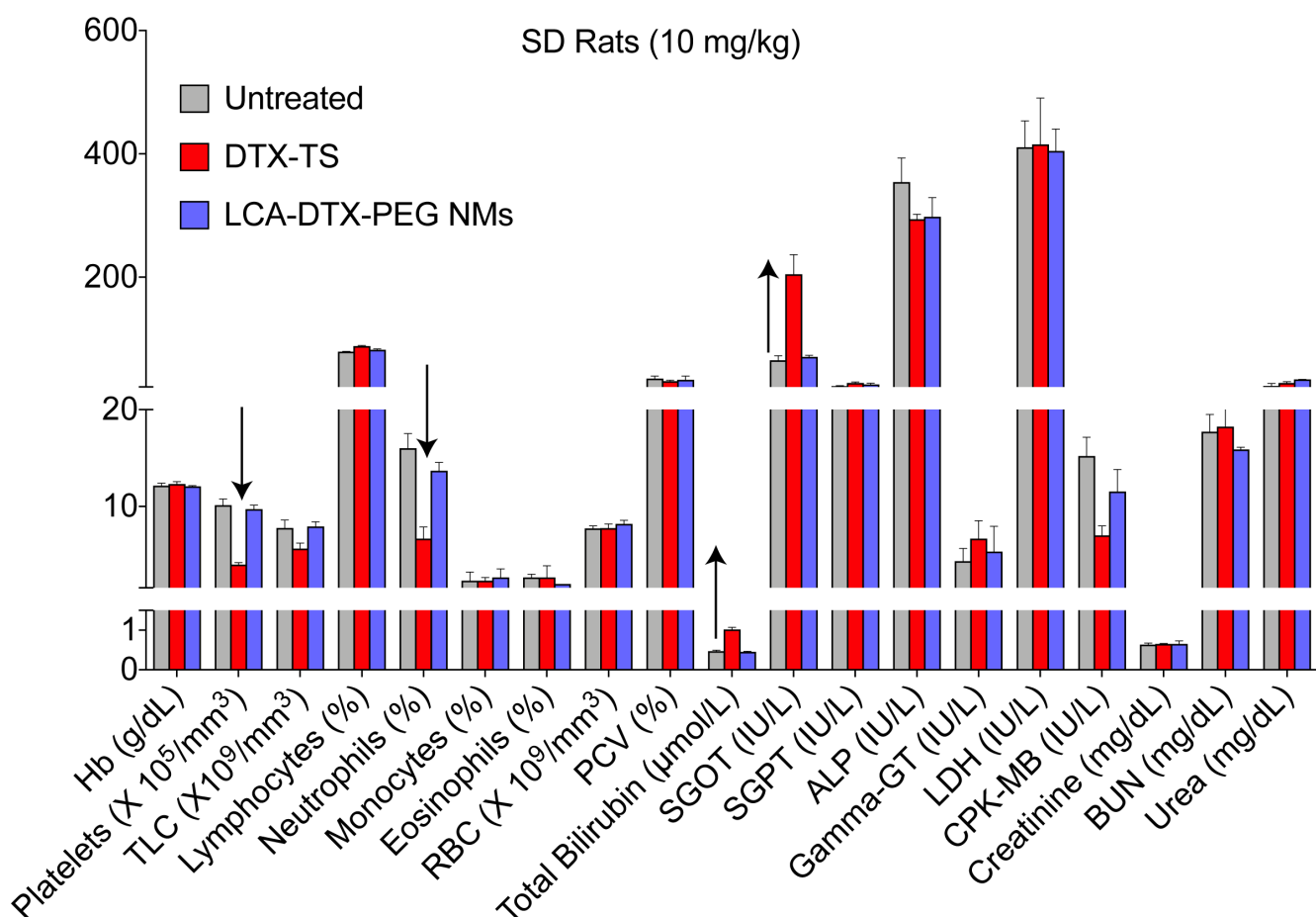


Figure S6. Toxicological studies in SD rats Changes in critical hematological and serological biomarkers of SD rats after 24 h of single dose administration of 10 mg/kg of DTX-TS and LCA-DTX-PEG NMs. Critical changes in the levels are indicated by upward/ downward arrow.

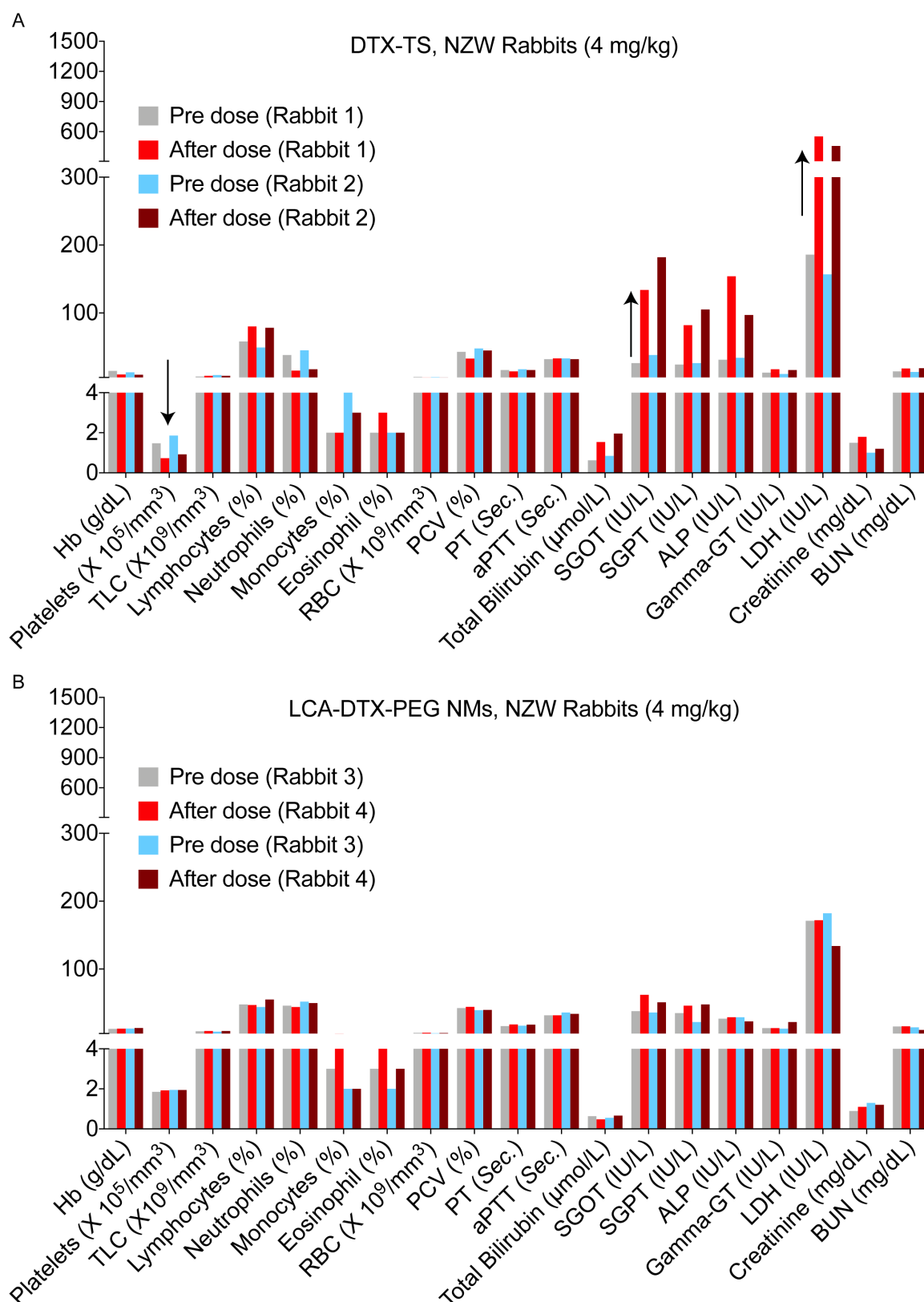


Figure S7. Toxicological studies in rabbits. Changes in critical hematological and serological biomarkers of each rabbit after 24 h of single dose administration of 4 mg/kg of DTX-TS (A) and LCA-DTX-PEG NMs (B). Critical changes in the levels are indicated by upward/ downward arrow.