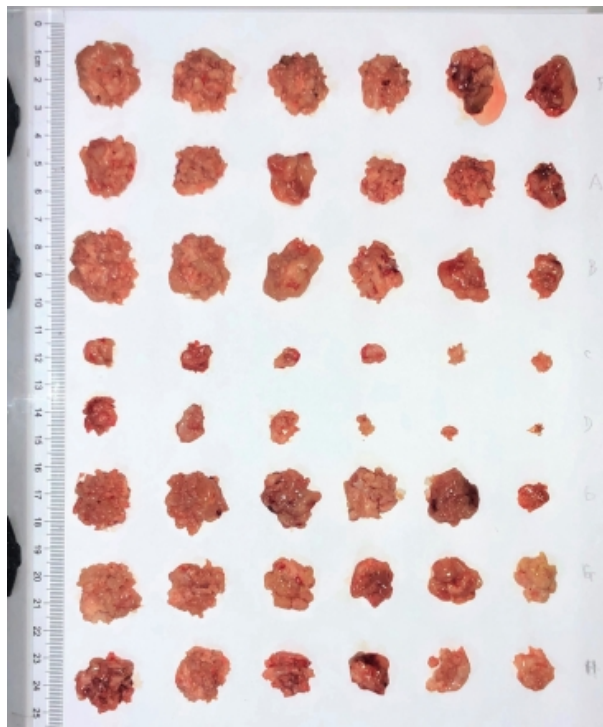


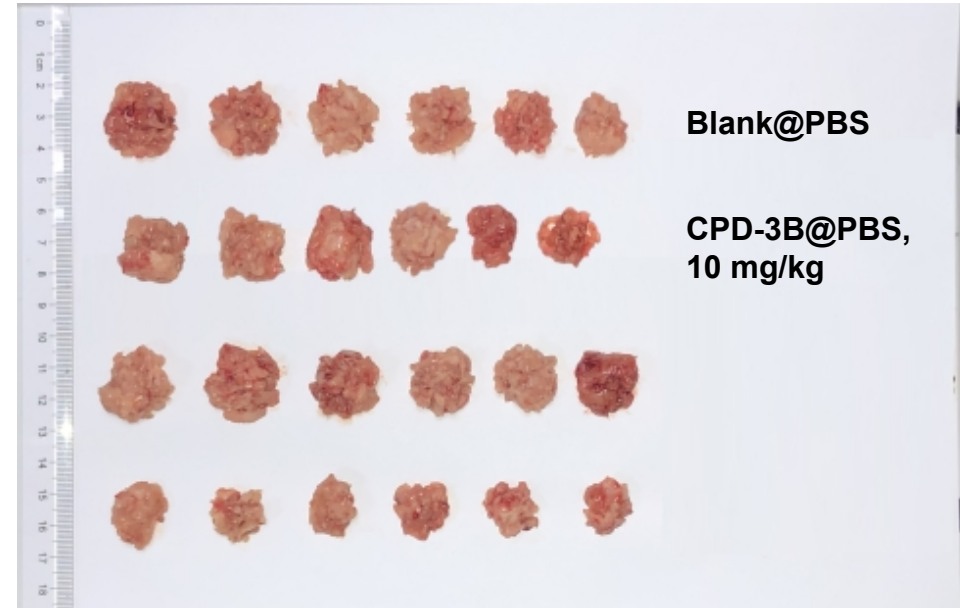
**Electronic Supplementary information (ESI):  
Biodegradable Self-assembly Micelles Significantly  
Enhanced Solubility, Biological Stability and *in vivo*  
*Antitumor Efficacy of Hexylselen***

**The original images of H22 xenograft solid tumors**



**Blank@SOL**

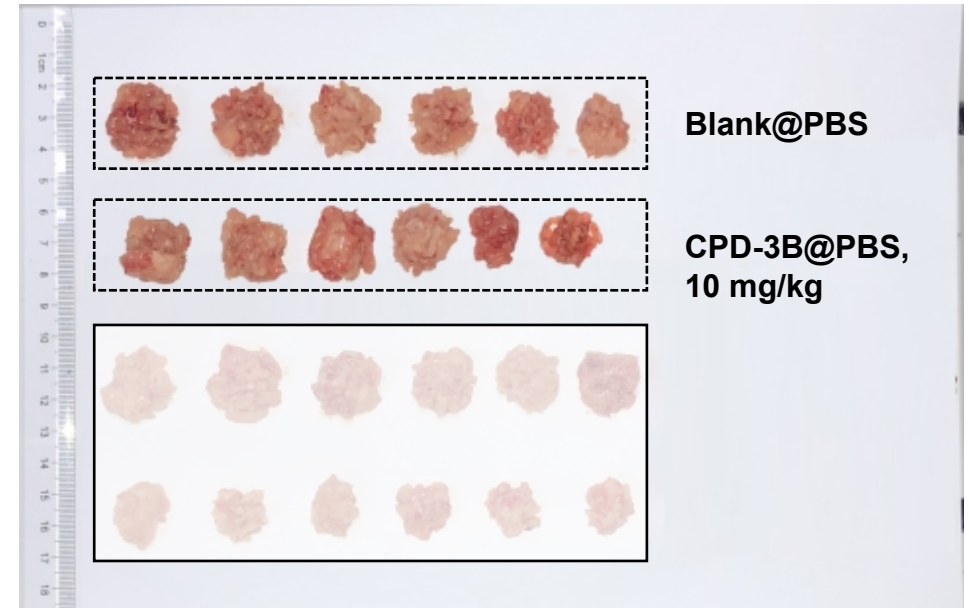
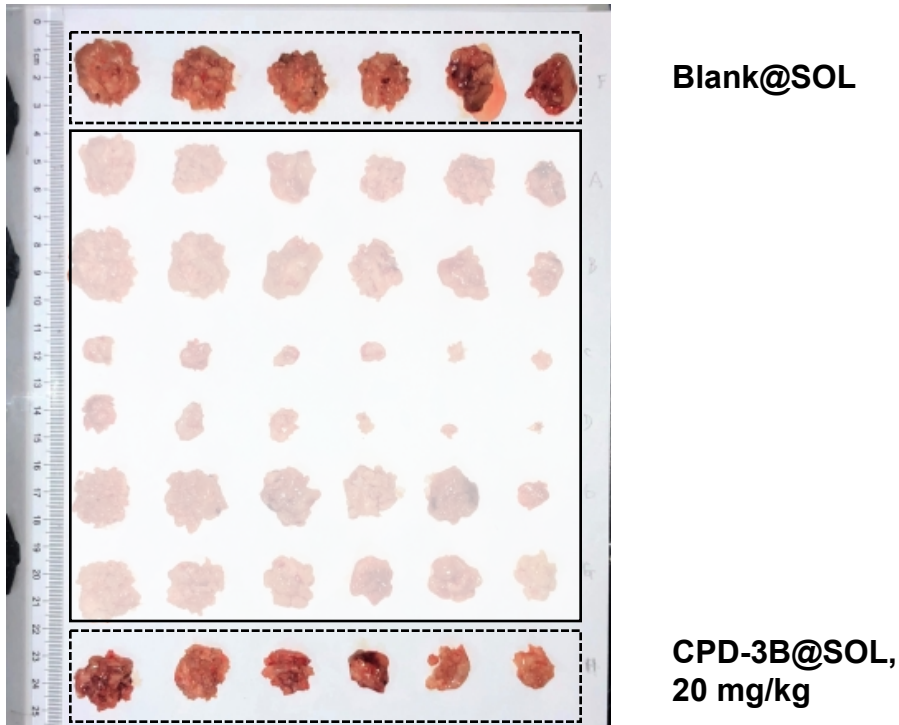
**CPD-3B@SOL,  
20 mg/kg**



**Blank@PBS**

**CPD-3B@PBS,  
10 mg/kg**

- **The original images of H22 xenograft solid tumors from the mice in dosed groups (IV) of CPD-3B@PBS and CPD-3B@SOL micelles.**
- **Blank@SOL: blank Soluplus micelles; CPD-3B@SOL: CPD-3B@SOL micelles, 20 mg/kg; Blank@PBS: PBS vehicle; CPD-3B@PBS: CPD-3B vehicle, 10 mg/kg. (SOL: Soluplus<sup>®</sup>; n = 6)**



- The original images of H22 xenograft solid tumors from the mice in dosed groups (IV) of CPD-3B@PBS and CPD-3B@SOL micelles.
- Blank@SOL: blank Soluplus micelles; CPD-3B@SOL: CPD-3B@SOL micelles, 20 mg/kg; Blank@PBS: PBS vehicle; CPD-3B@PBS: CPD-3B vehicle, 10 mg/kg. (SOL: Soluplus<sup>®</sup>; n = 6)