



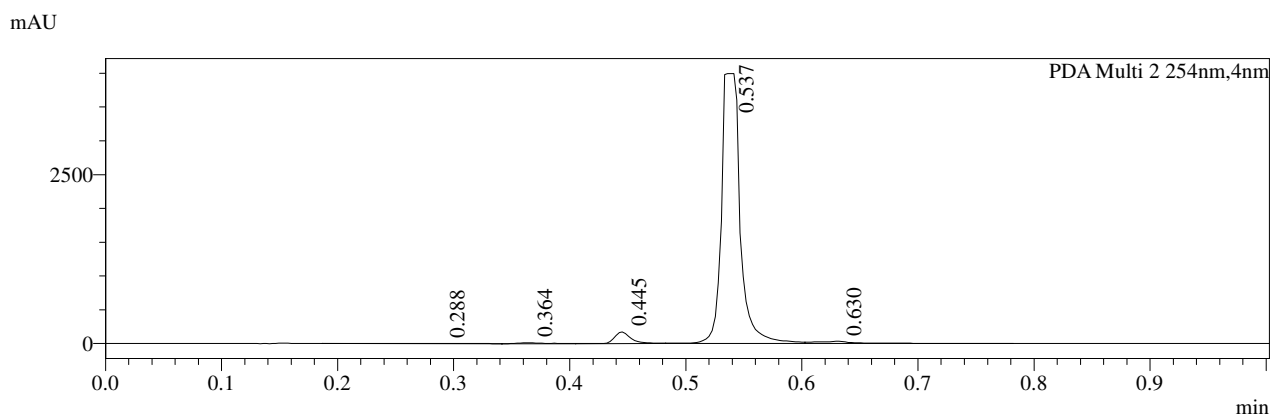
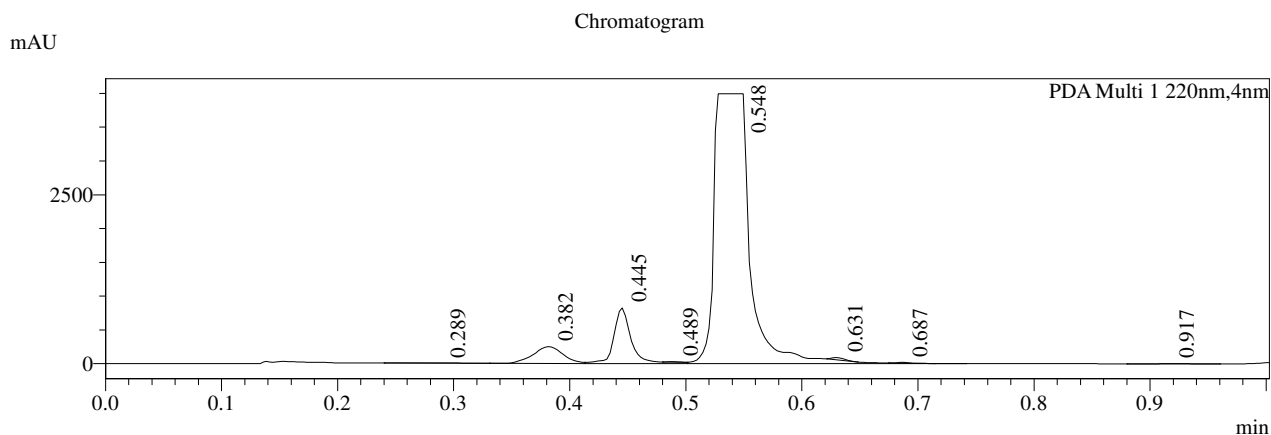
Document Number:	EB2224-83B
Title:	EB2224-83-P1B1.pdf
Chemist:	ZHOU,PENG
Created Date:	Aug.20.2020
Last Modified Date:	Aug.21.2020
Witness:	Witnessed by CHEN, HUI on Aug.21.2020
Print Date:	Nov.09.2020
Copyright:	WuXi AppTec
Classifications:	Confidential, Vital Integrity

[EB2224-83B] EB2224-83-P1B1.pdf

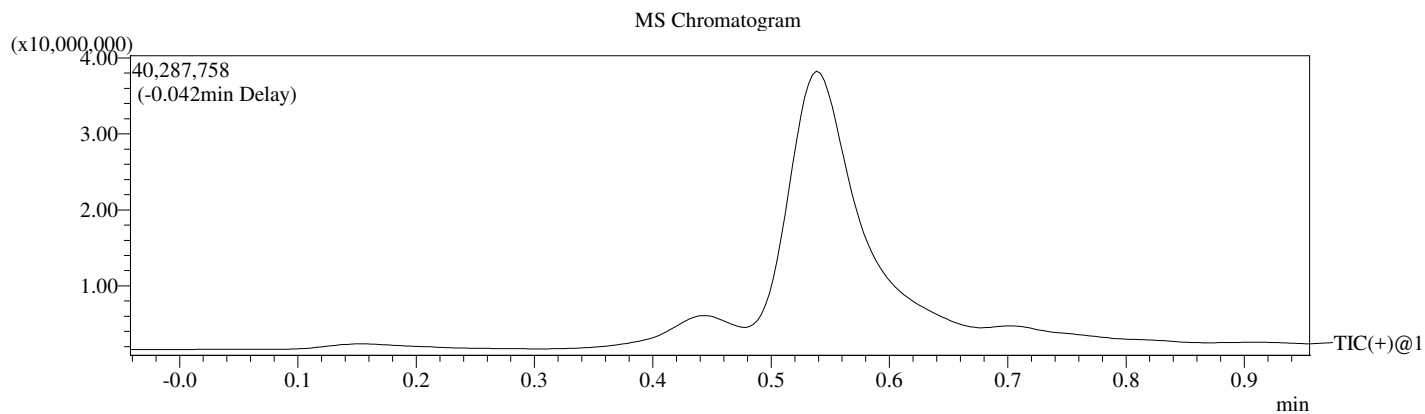
3

LCMS REPORT

Print time : 08/20/2020 18:01:57
Compound ID : 1
Sample ID : EB2224-83-P1B1
Injection Date : 2020/8/20 18:00:48
Injection Vol : 6ul
Location : tray1 vail40
Acq Method : 5-95AB_1min_220&254_Shimadzu.lcm
Org Data File : D:\DATA\2020\2008\200820\EB2224-83-P1B1.lcd
Instrument & column: LCMS_05 1-2402
AB method: Chromolith @ Flash RP-18e, 25-3mm
CD method: Xbridge shield RP 18, 5um, 2.1*50mm



- 1 PDA Multi 1 / 220nm, 4nm
- 2 PDA Multi 2 / 254nm, 4nm



Integration Result

Peak Table

PDA Ch1 220nm

Peak#	Ret. Time	Height	Height%	USP Width	Area	Area%
1	0.289	5020	0.098	0.073	12222	0.125
2	0.382	248806	4.861	0.052	447313	4.571
3	0.445	821575	16.050	0.028	850010	8.686
4	0.489	5753	0.112	0.021	3654	0.037
5	0.548	3989803	77.943	0.040	8439220	86.236
6	0.631	33455	0.654	0.023	21241	0.217
7	0.687	13580	0.265	0.023	10331	0.106
8	0.917	854	0.017	0.073	2193	0.022

PDA Ch2 254nm

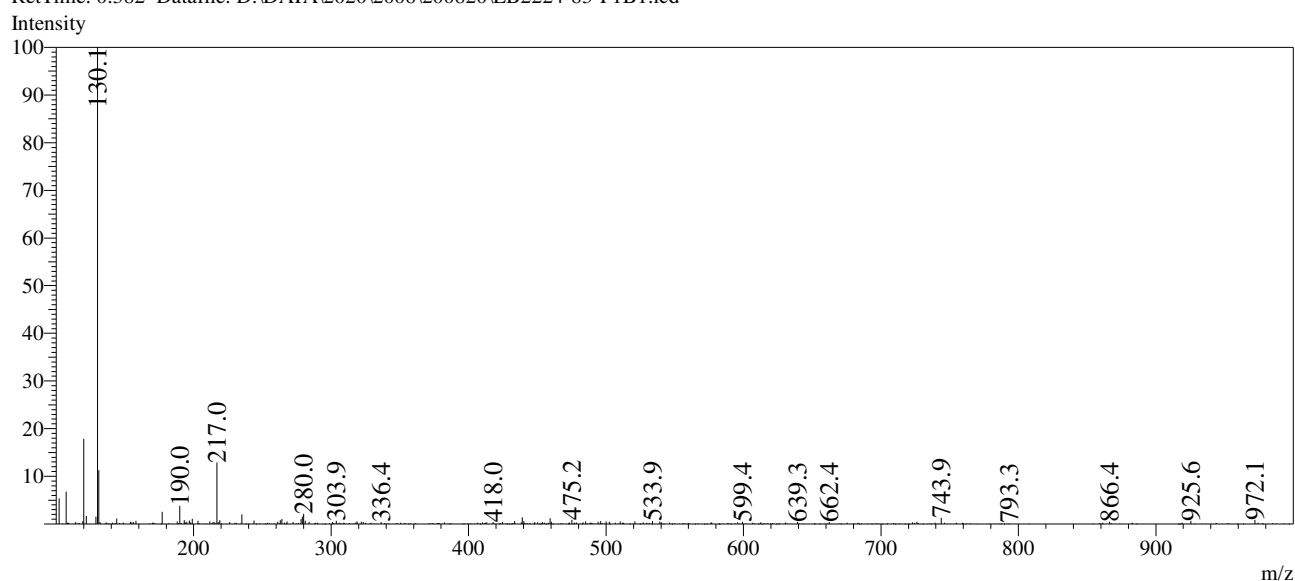
Peak#	Ret. Time	Height	Height%	USP Width	Area	Area%
1	0.288	3222	0.076	0.143	16983	0.353
2	0.364	13249	0.314	0.039	20134	0.418
3	0.445	173176	4.108	0.029	171896	3.569
4	0.537	3992825	94.710	0.029	4527750	94.001
5	0.630	33354	0.791	0.089	79965	1.660

Operator:_____

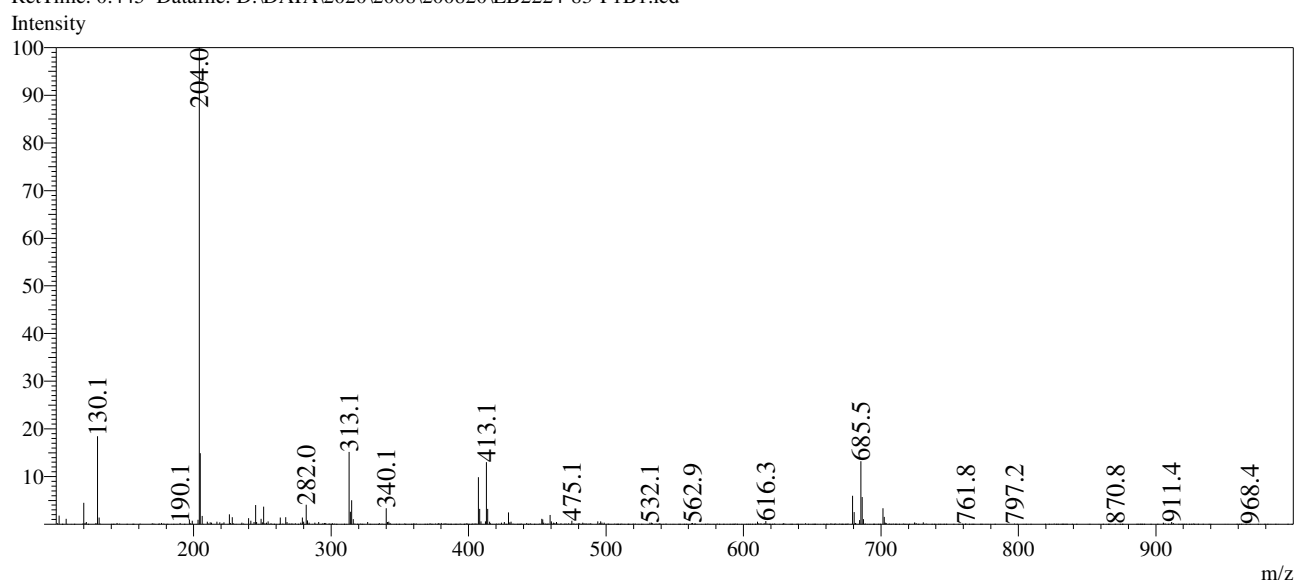
Date:_____

Mass Spectrum

RefTime: 0.382 Datafile: D:\DATA\2020\2008\200820\EB2224-83-P1B1.lcd



RefTime: 0.445 Datafile: D:\DATA\2020\2008\200820\EB2224-83-P1B1.lcd



RefTime: 0.548 Datafile: D:\DATA\2020\2008\200820\EB2224-83-P1B1.lcd

