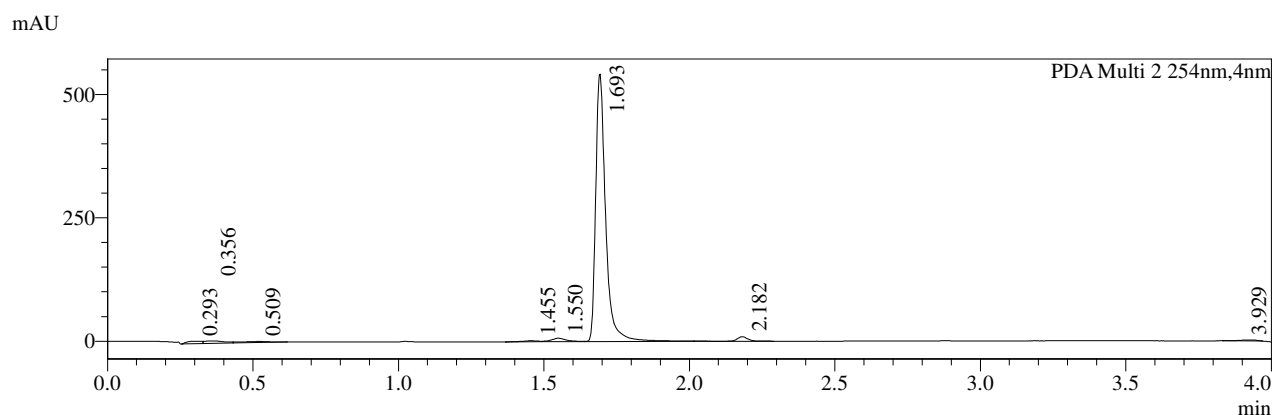
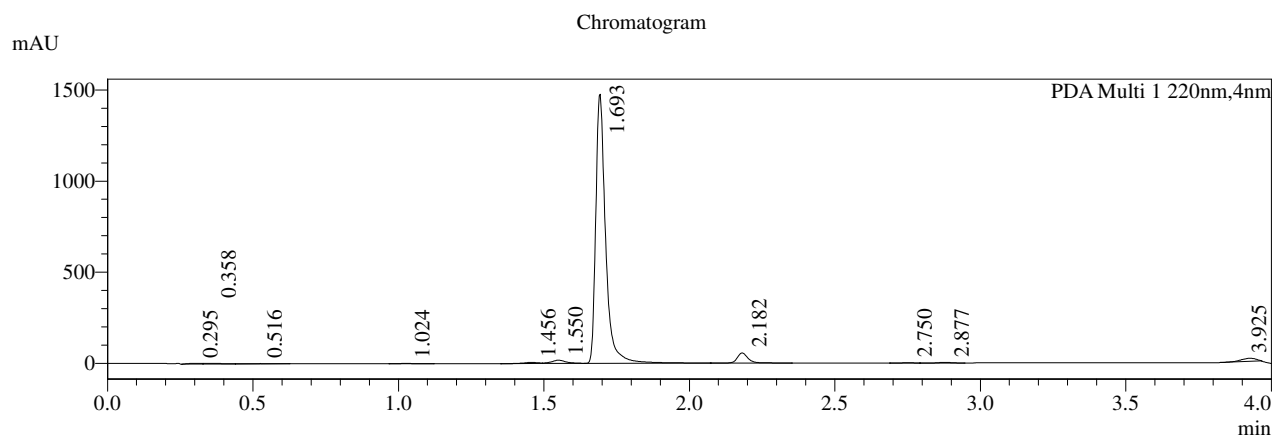


Acquisition Time (sec) 1.9999
Comment EB2224-1
94-P1A
DMSO
Bruker_N
T-C_400M
Hz
Date 30 Oct
2020
01:26:16
Frequency (MHz) 400.1400
Nucleus 1H
Number of Transients 8
Origin Avance
Original Points Count 16393
Owner nmrsu
Points Count 65536
Pulse Sequence zg30
Receiver Gain 101.00
SW(cyclical) (Hz) 8196.72
Solvent DMSO-d₆
Spectrum Offset (Hz) 2400.8411
Spectrum Type standard
Sweep Width (Hz) 8196.60
Temperature (degree C) 22.764

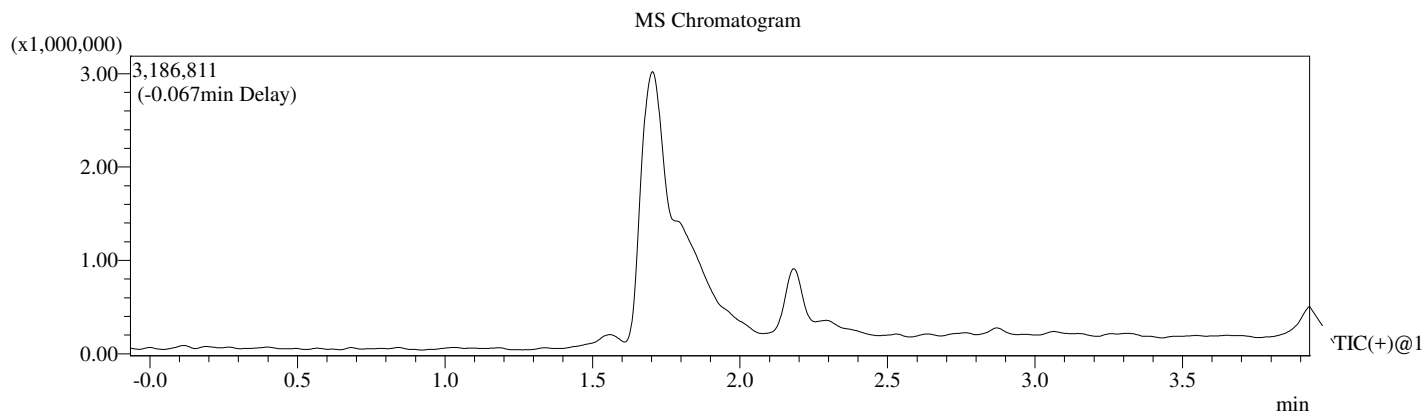
¹H NMR (400MHz, DMSO-d₆) δ =
11.74 (br s, 1H), 8.02 (d, *J*=2.8 Hz,
1H), 7.82 (s, 1H), 7.63 (d, *J*=8.0 Hz,
1H), 7.51 (t, *J*=7.4 Hz, 1H), 7.36 (s,
1H), 7.28 - 7.12 (m, 4H), 7.00 - 6.93
(m, 2H), 6.49 (s, 1H), 5.13 (br s,
2H), 2.92 (s, 6H)

LCMS REPORT

Print time : 10/29/2020 18:18:43
Compound ID : ALP-POS-ddb41b15-3
Sample ID : EB2224-194-P1B2
Injection Date : 2020/10/29 18:14:28
Injection Vol : 1ul
Location : tray1 vail12
Acq Method : 10-80CD_4min_Pos_220&254_Shimadzu.lcm
Org Data File : D:\DATA\2020\2010\201029\EB2224-194-P1B2.lcd
Instrument & column: LCMS_02 1-2402
XBridge Shield RP18, 5um,2.1*50mm



- 1 PDA Multi 1 / 220nm,4nm
- 2 PDA Multi 2 / 254nm,4nm



Integration Result

PDA Ch1 220nm

Peak#	Ret. Time	Height	Height%	USP Width	Area	Area%
1	0.295	3459	0.220	0.271	11704	0.304
2	0.358	3930	0.251	0.218	17915	0.466
3	0.516	1837	0.117	0.396	11620	0.302
4	1.024	2573	0.164	0.061	6823	0.177
5	1.456	6449	0.411	0.103	23216	0.603
6	1.550	18245	1.163	0.090	65605	1.705
7	1.693	1455765	92.789	0.062	3488328	90.667
8	2.182	55029	3.507	0.068	146903	3.818
9	2.750	956	0.061	0.062	2205	0.057
10	2.877	3733	0.238	0.069	9303	0.242
11	3.925	16917	1.078	0.100	63793	1.658

PDA Ch2 254nm

Peak#	Ret. Time	Height	Height%	USP Width	Area	Area%
1	0.293	5005	0.881	0.294	17922	1.263
2	0.356	5233	0.921	0.278	24221	1.707
3	0.509	2378	0.419	0.427	17034	1.200
4	1.455	2044	0.360	0.116	7688	0.542
5	1.550	7051	1.242	0.091	25676	1.809
6	1.693	535285	94.252	0.062	1293487	91.132
7	2.182	9066	1.596	0.069	25815	1.819
8	3.929	1866	0.328	0.105	7506	0.529

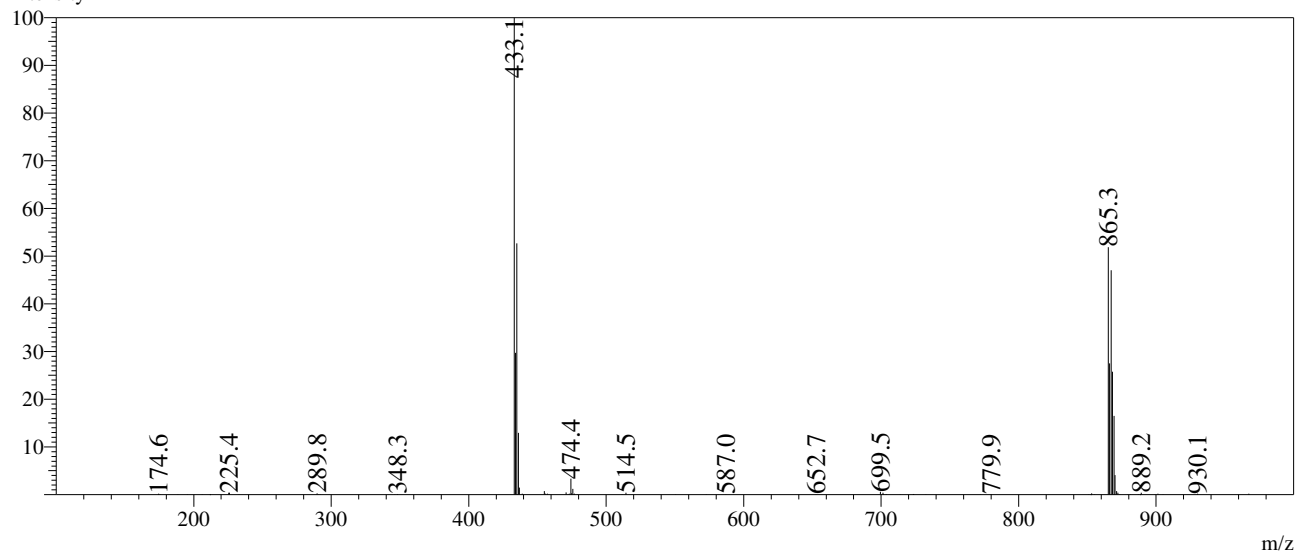
Operator:_____

Date:_____

Mass Spectrum

RefTime: 1.693 Datafile: D:\DATA\2020\2010\201029\EB2224-194-P1B2.lcd

Intensity



RefTime: 2.180 Datafile: D:\DATA\2020\2010\201029\EB2224-194-P1B2.lcd

Intensity

