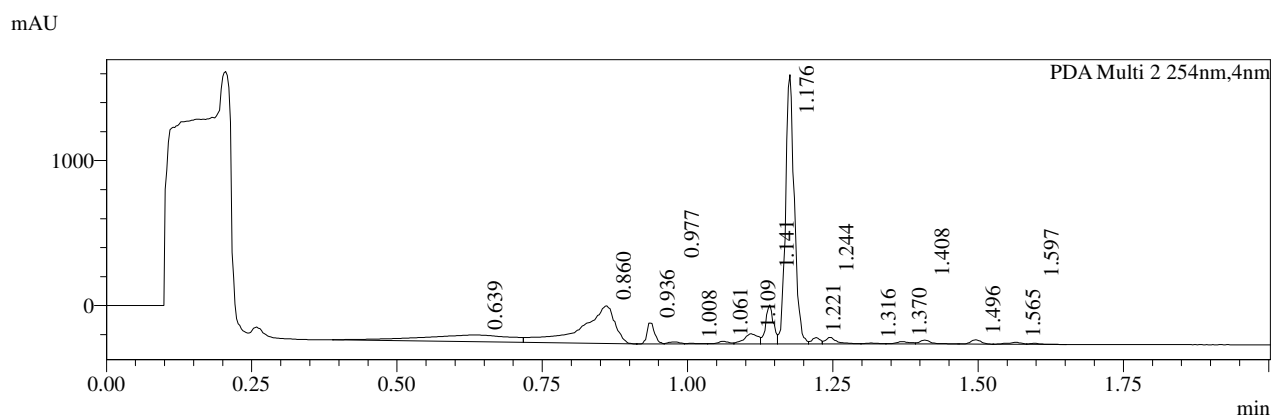
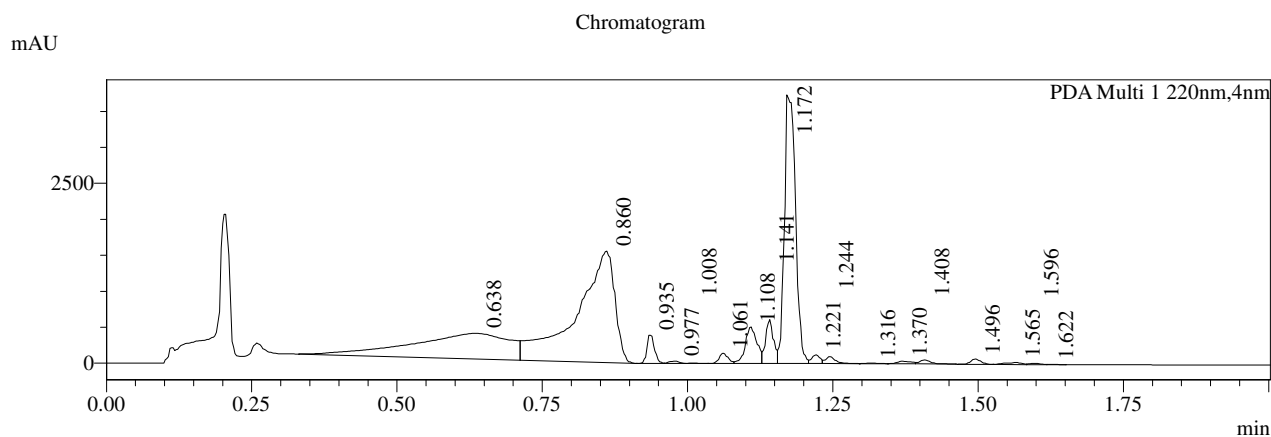


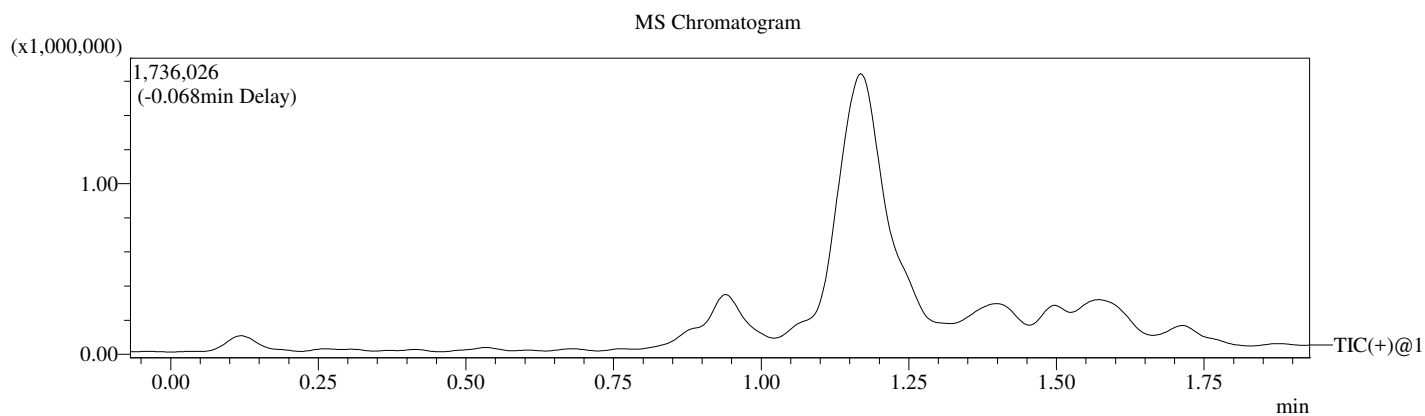
# LCMS REPORT

Print time : 07/21/2020 12:30:46

Compound ID : 1  
Sample ID : EB2257-9-P1A1  
Injection Data : 12:28:24  
Injection Vol : 2ul  
Location : tray1 vail32  
Acq Method : D:\method\10-80AB\_2min\_220&254\_Shimadzu.lcm  
Org DataFile : D:\DATA\2020\2007\200721\EB2257-9-P1A1.lcd  
Instrument & column: LCMS-SAP 1-2402  
Xtimate C18, 3um,2.1\*30mm



- 1 PDA Multi 1 / 220nm,4nm
- 2 PDA Multi 2 / 254nm,4nm



=====  
Integration Result  
=====

AD2

PDA Ch1 220nm

Peak#	Ret. Time	Height	Height%	USP Width	Area	Area%
1	0.638	355545	4.572	0.418	4099902	22.137
2	0.860	1548819	19.917	0.109	7060834	38.125
3	0.935	392469	5.047	0.026	354161	1.912
4	0.977	30171	0.388	0.036	38843	0.210
5	1.008	6277	0.081	0.037	7378	0.040
6	1.061	143086	1.840	0.033	156259	0.844
7	1.108	509594	6.553	0.044	720276	3.889
8	1.141	613605	7.891	0.027	581743	3.141
9	1.172	3733111	48.006	0.033	4950343	26.729
10	1.221	123328	1.586	0.037	120882	0.653
11	1.244	95042	1.222	0.038	112421	0.607
12	1.316	7522	0.097	0.037	8754	0.047
13	1.370	34375	0.442	0.057	58736	0.317
14	1.408	57640	0.741	0.041	75330	0.407
15	1.496	73402	0.944	0.037	89965	0.486
16	1.565	28834	0.371	0.059	56329	0.304
17	1.596	17441	0.224	0.042	22731	0.123
18	1.622	6028	0.078	0.043	5428	0.029

PDA Ch2 254nm

Peak#	Ret. Time	Height	Height%	USP Width	Area	Area%
1	0.639	46291	1.607	0.362	484095	11.300
2	0.860	260057	9.028	0.082	1028018	23.996
3	0.936	144706	5.023	0.026	133420	3.114
4	0.977	13955	0.484	0.039	19229	0.449
5	1.008	4399	0.153	0.061	7546	0.176
6	1.061	19200	0.667	0.040	25384	0.593
7	1.109	70596	2.451	0.056	118748	2.772
8	1.141	270126	9.377	0.028	252414	5.892
9	1.176	1856779	64.456	0.031	1955518	45.646
10	1.221	44691	1.551	0.038	44438	1.037
11	1.244	45836	1.591	0.038	63885	1.491
12	1.316	6651	0.231	0.069	12067	0.282
13	1.370	17310	0.601	0.044	29659	0.692
14	1.408	27890	0.968	0.040	37785	0.882
15	1.496	31197	1.083	0.037	37727	0.881
16	1.565	13154	0.457	0.046	22290	0.520
17	1.597	7865	0.273	0.038	11851	0.277

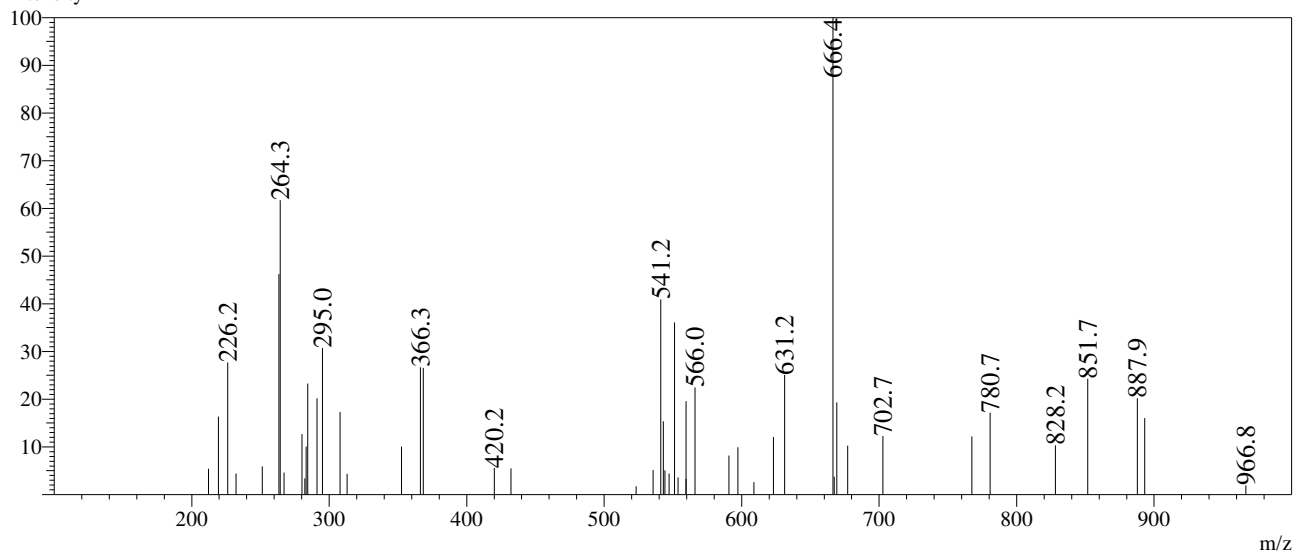
Operator:\_\_\_\_\_

Date:\_\_\_\_\_

# Mass Spectrum

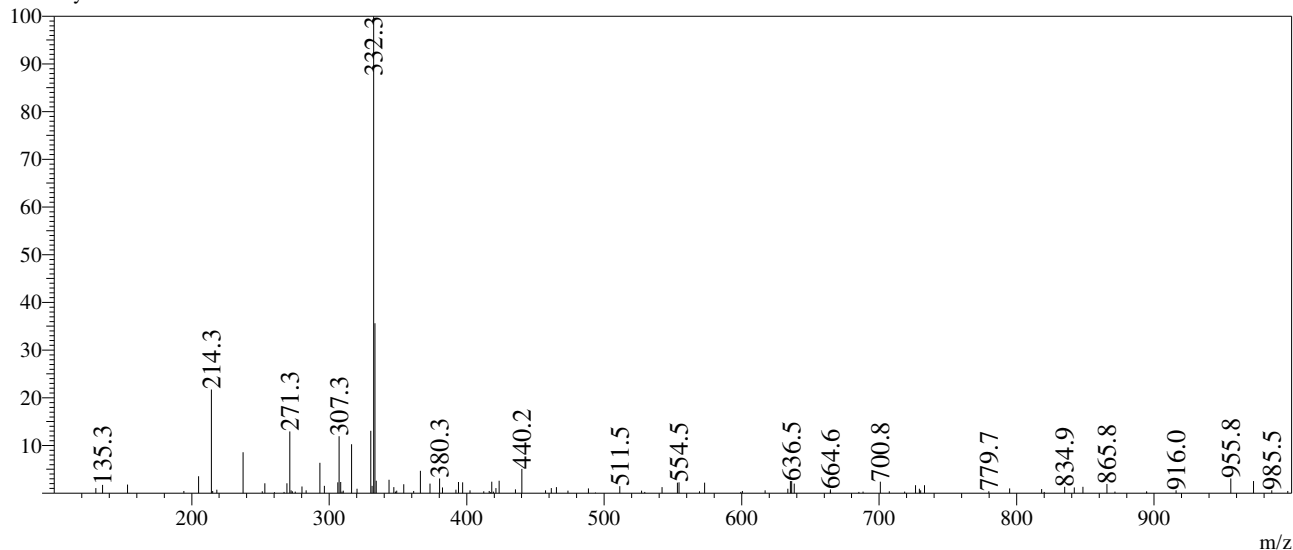
RefTime: 0.638 Datafile: D:\DATA\2020\2007\200721\EB2257-9-P1A1.lcd

Intensity



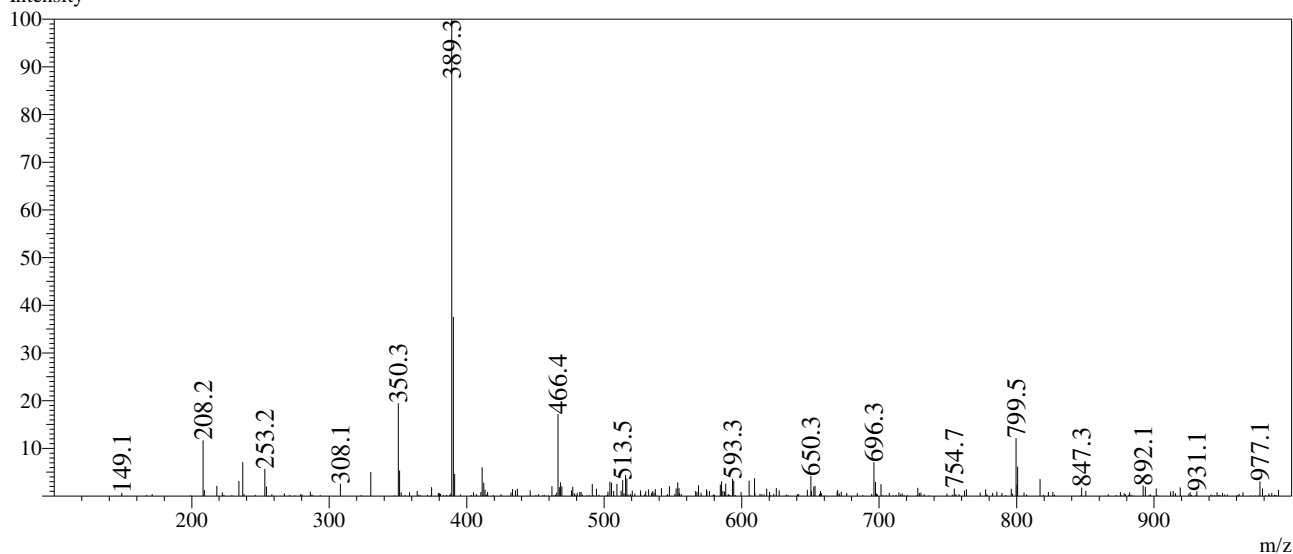
RefTime: 0.862 Datafile: D:\DATA\2020\2007\200721\EB2257-9-P1A1.lcd

Intensity

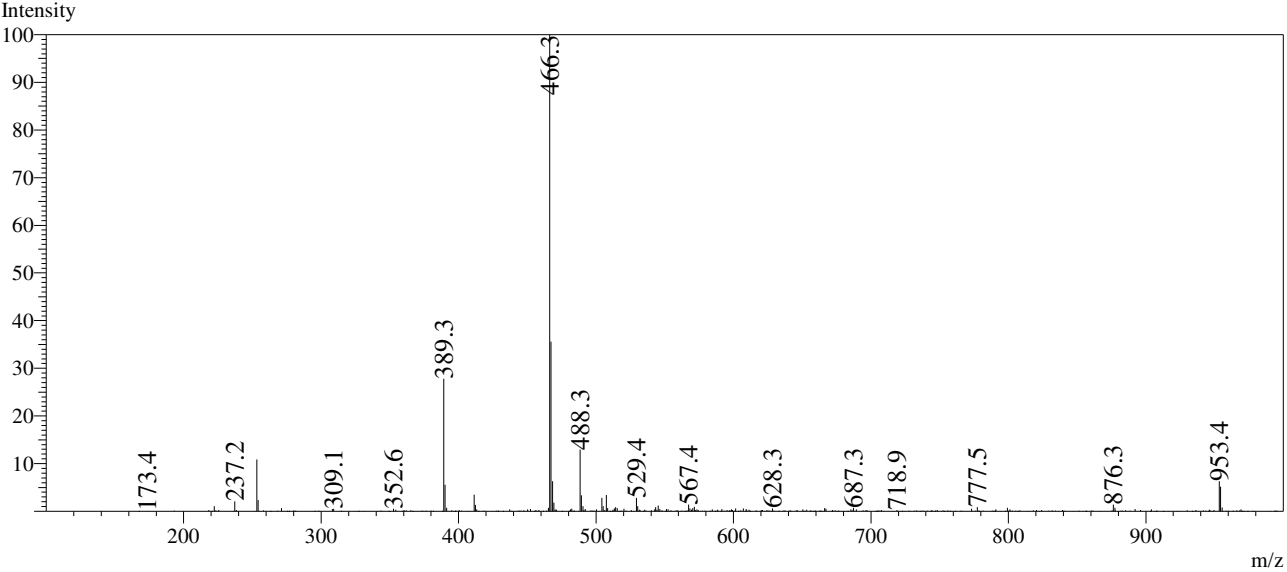


RefTime: 1.108 Datafile: D:\DATA\2020\2007\200721\EB2257-9-P1A1.lcd

Intensity



RefTime: 1.142 Datafile: D:\DATA\2020\2007\200721\EB2257-9-P1A1.lcd



RefTime: 1.172 Datafile: D:\DATA\2020\2007\200721\EB2257-9-P1A1.lcd

