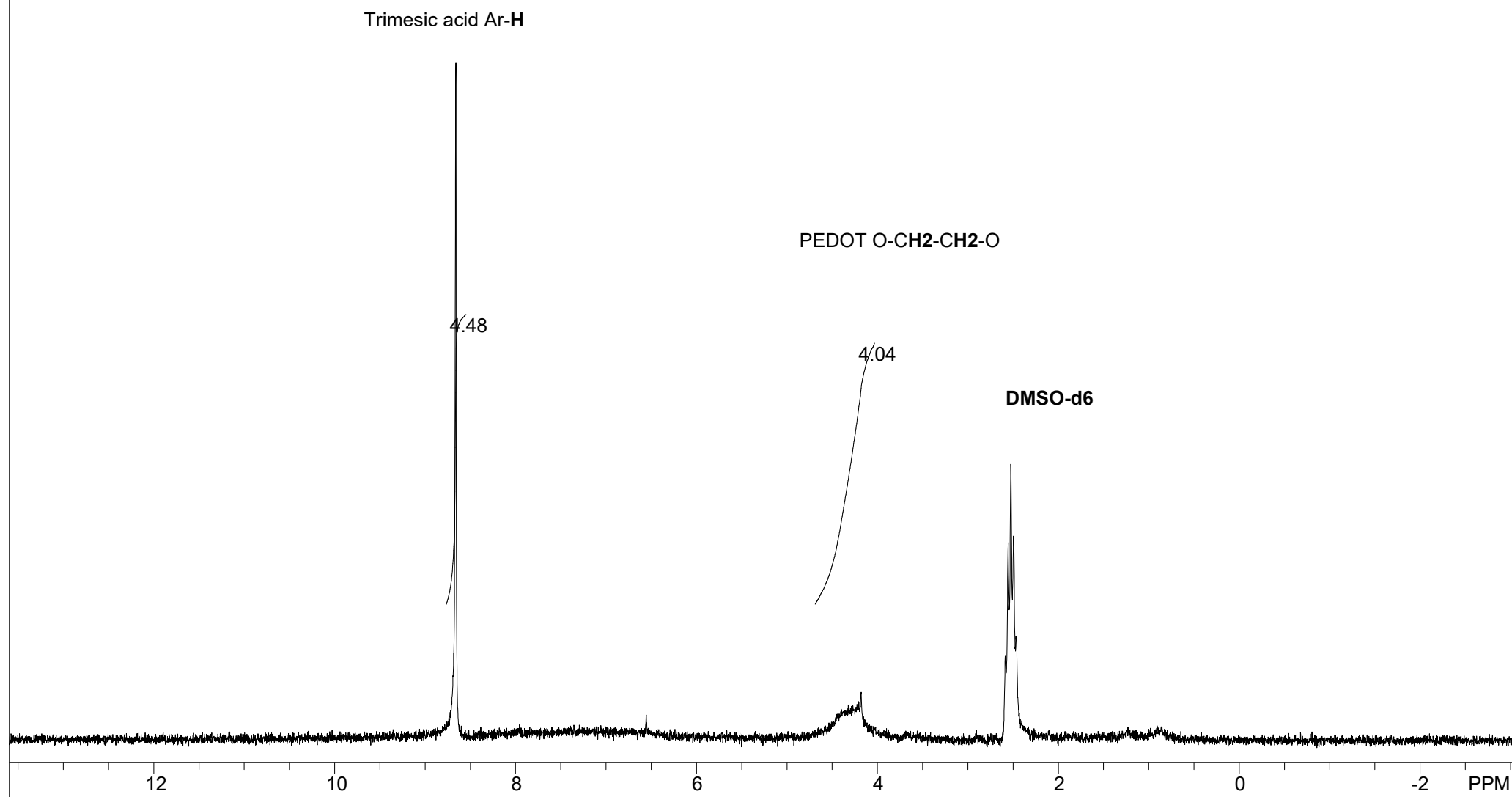


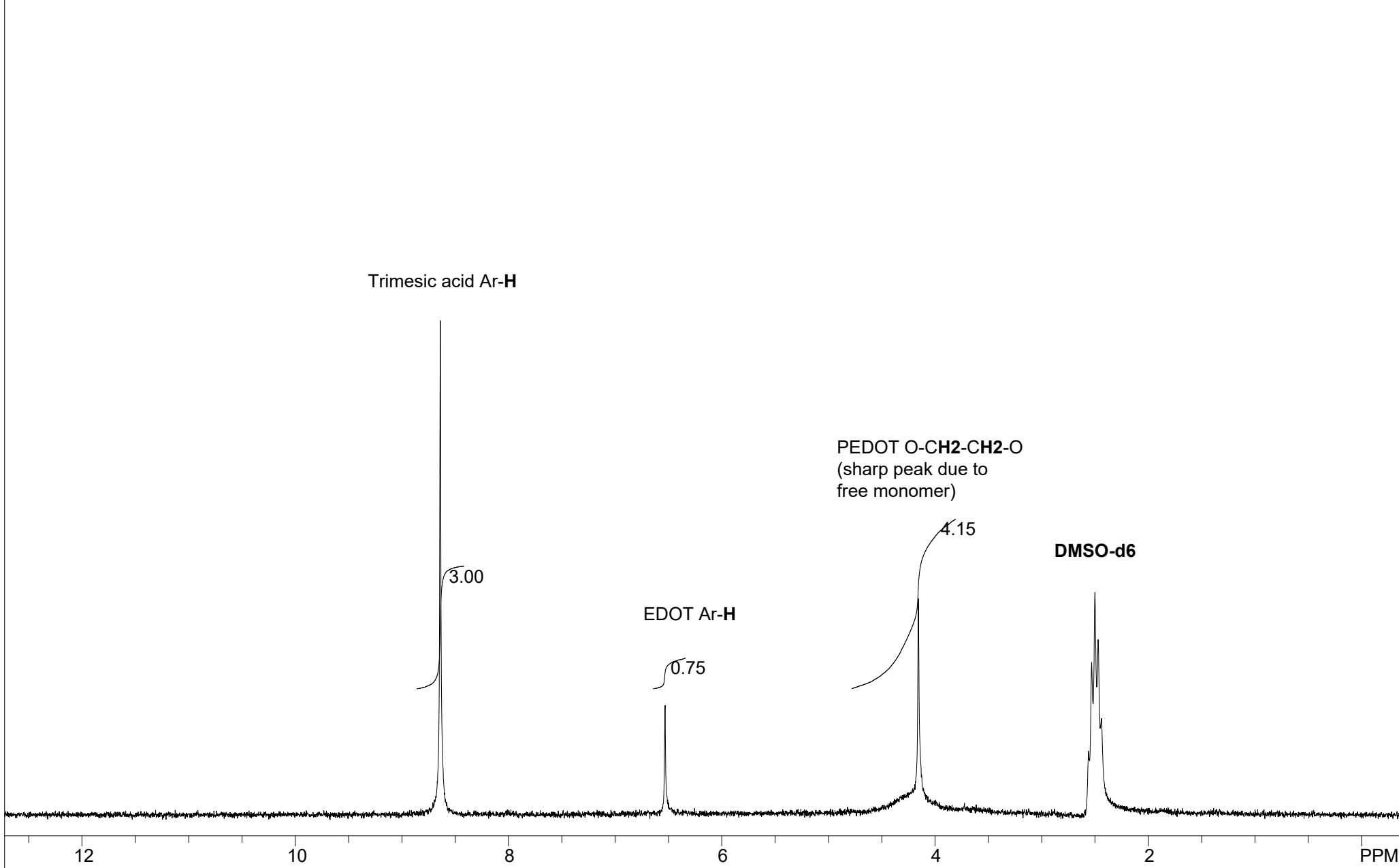
Figure S17: Hexane loaded EDOT composite, etched



USER: -- DATE: 04/13/21 (17:20)

F1: 60.010	SW1: 1000	OF1: 316.0	PTS1d: 8192
EX: c:\eft\H1\ZG.ppg	PW: 9.2 us	PD: 5.0 sec	NA: 8
		LB: 0.0	Nuts - enb15p3_etch_EDOTHexane

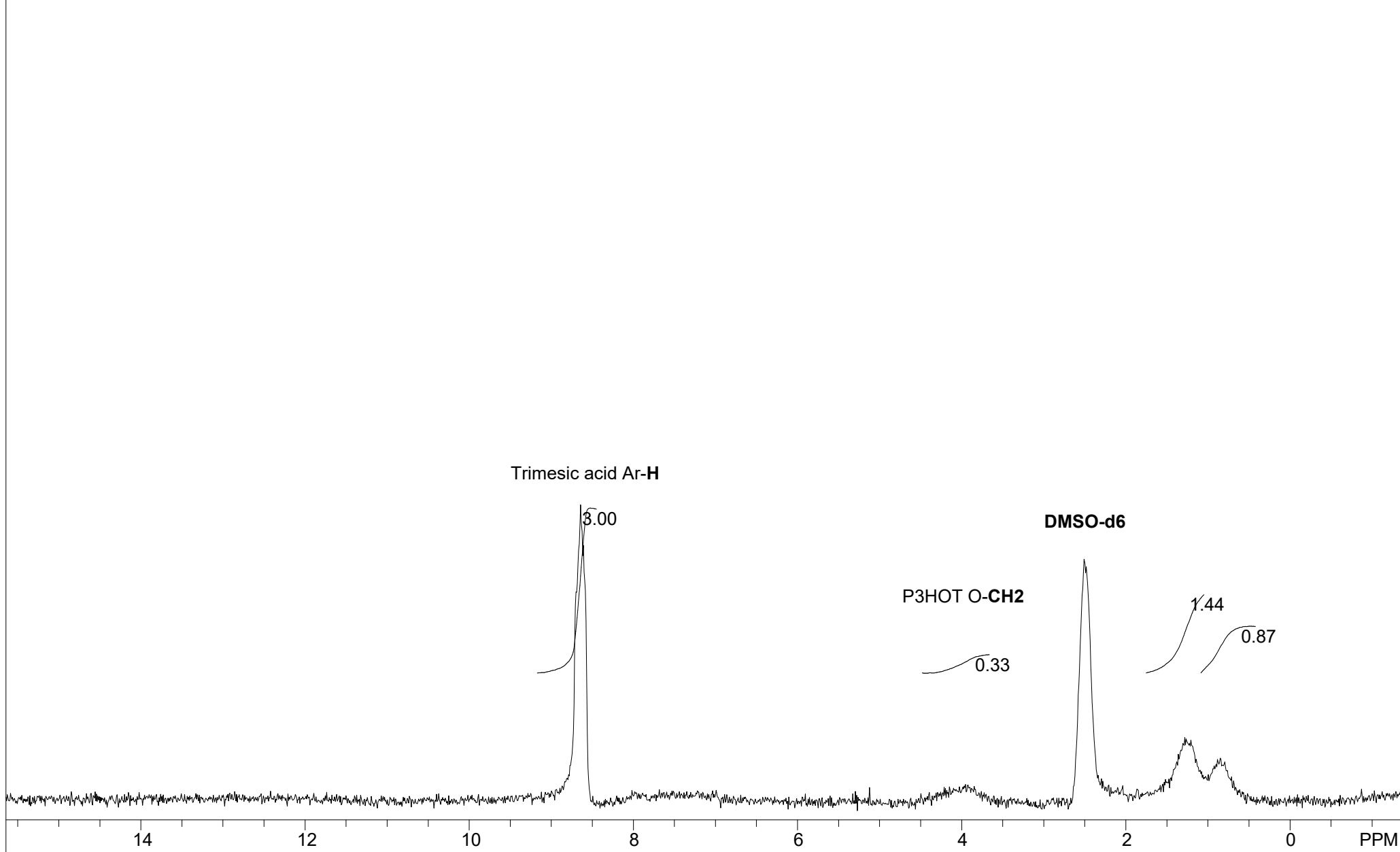
Figure S18: Neat EDOT composite, etched



USER: -- DATE: 04/13/21 (13:29)

F1: 60.010	SW1: 1000	OF1: 323.7	PTS1d: 8192
EX: c:\eft\H1\ZG.ppg	PW: 9.2 us	PD: 5.0 sec	NA: 16
		LB: 0.0	Nuts - enb15p3_etch_NeatEDOT

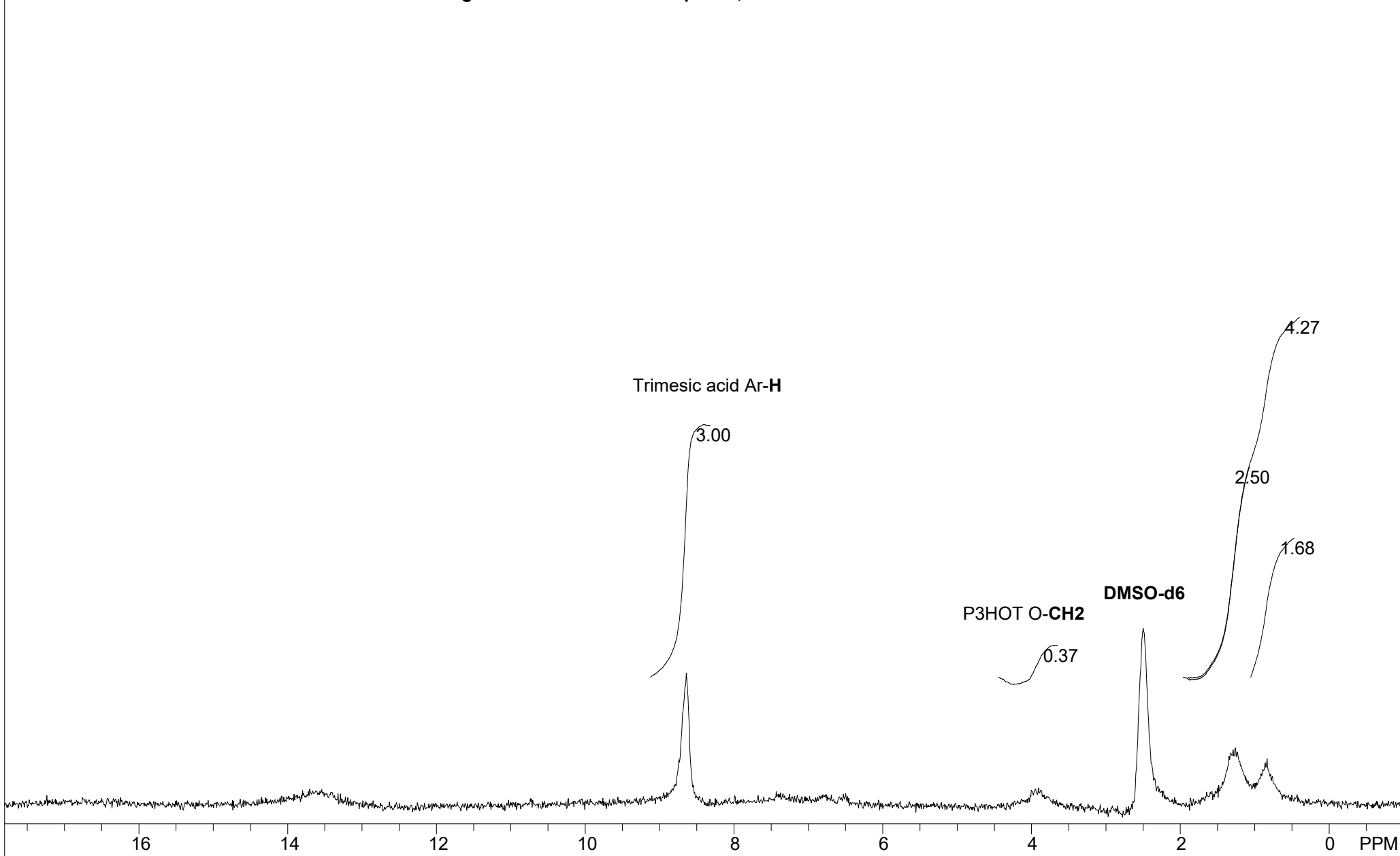
Figure S19: Hexane loaded 3HOT composite, etched



USER: -- DATE: 04/15/21 (17:56)

F1: 60.010	SW1: 3994	OF1: 307.7	PTS1d: 8192
EX: c:\eft\H1\ZG.ppg	PW: 1.5 us	PD: 5.0 sec	NA: 128
		LB: 0.0	Nuts - enb15p3_etch_HexOHexanes1

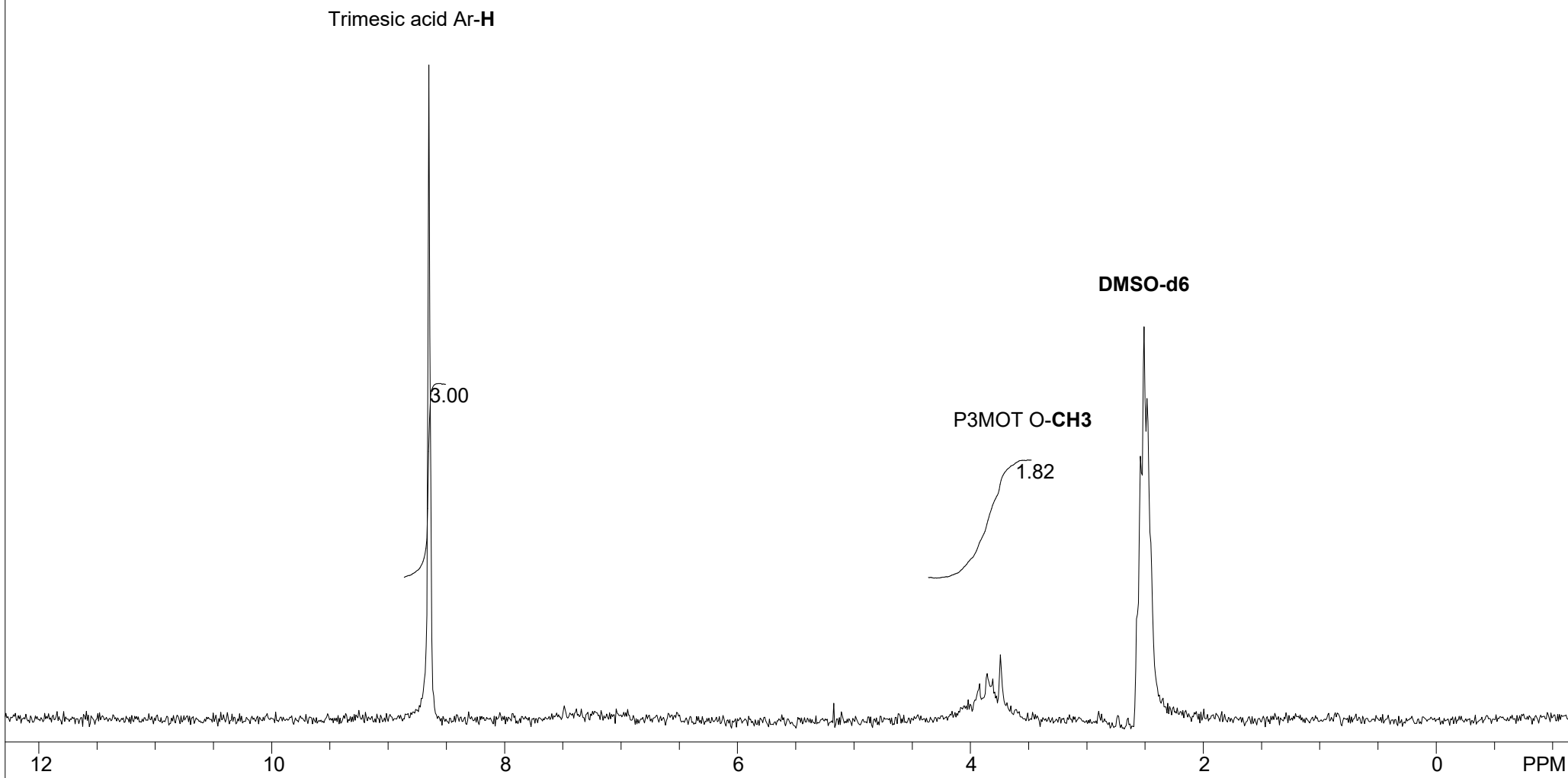
Figure S20: Neat 3HOT composite, etched



USER: -- DATE: 04/15/21 (17:14)

F1: 60.010	SW1: 3994	OF1: 333.6	PTS1d: 8192
EX: c:\eft\H1\ZG.ppg	PW: 1.5 us	PD: 5.0 sec	NA: 128
		LB: 0.0	Nuts - enb15p3_etch_HexONeat2_1

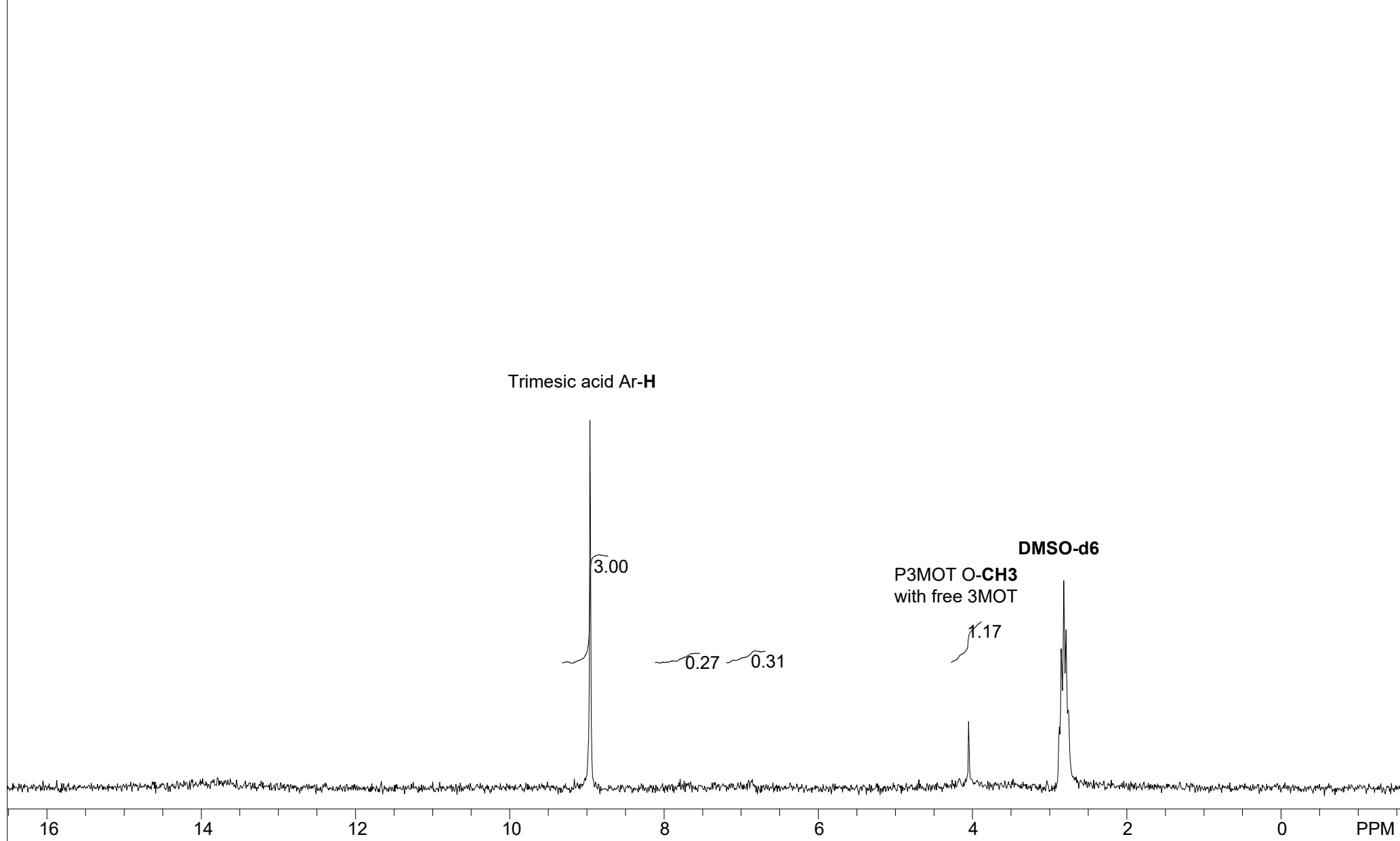
Figure S21: Hexane loaded 3MOT composite, etched



USER: -- DATE: 04/15/21 (16:29)

F1: 60.010	SW1: 3994	OF1: 310.7	PTS1d: 8192
EX: c:\eft\H1\ZG.ppg	PW: 1.5 us	PD: 5.0 sec	NA: 128
		LB: 0.0	Nuts - enb15p3_etch_MeOHexanes3

Figure S22: Neat 3MOT composite, etched



USER: -- DATE: 04/15/21 (14:17)

F1: 60.010	SW1: 3994	OF1: 360.0	PTS1d: 8192
EX: c:\eft\H1\ZG.ppg	PW: 1.5 us	PD: 5.0 sec	NA: 32
		LB: 0.0	Nuts - enb15p3_etch_MeONeat2