

## **Supporting Information**

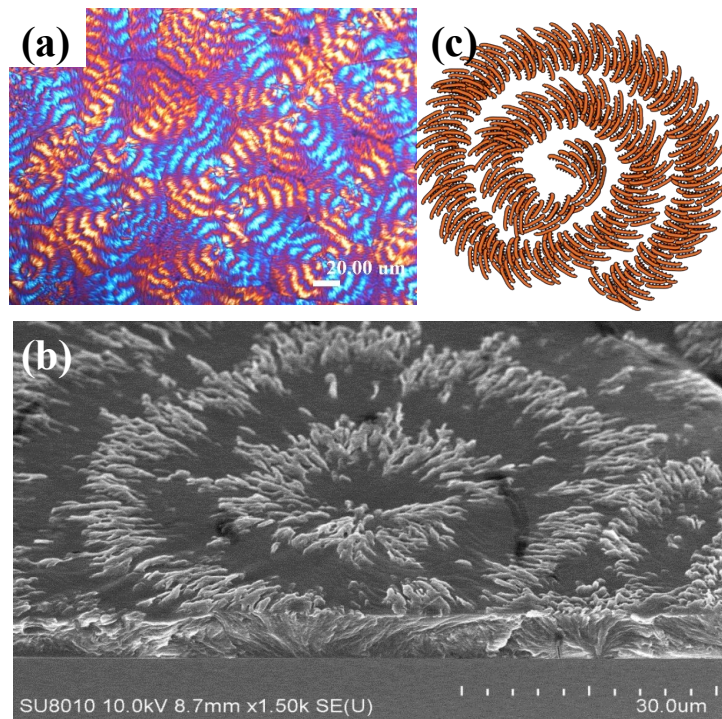
# **Sluggish-Growth Petal-Shaped Aggregates of Poly( $\epsilon$ -caprolactone) Packed with Thick-Stack Lamellar Bundles**

**Selvaraj Nagarajan and Eamor M. Woo\***

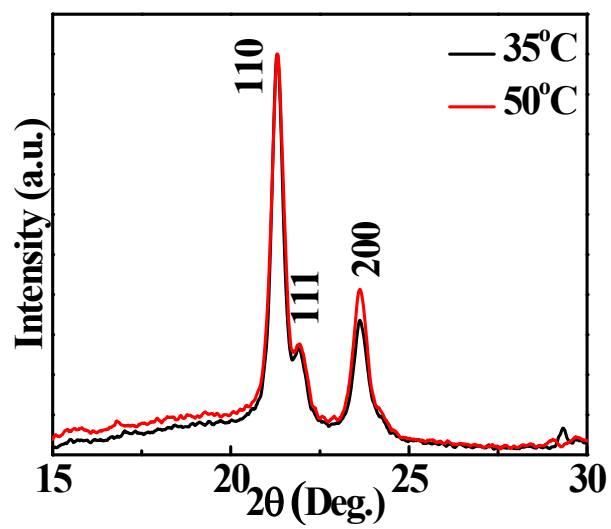
Department of Chemical Engineering

National Cheng Kung University

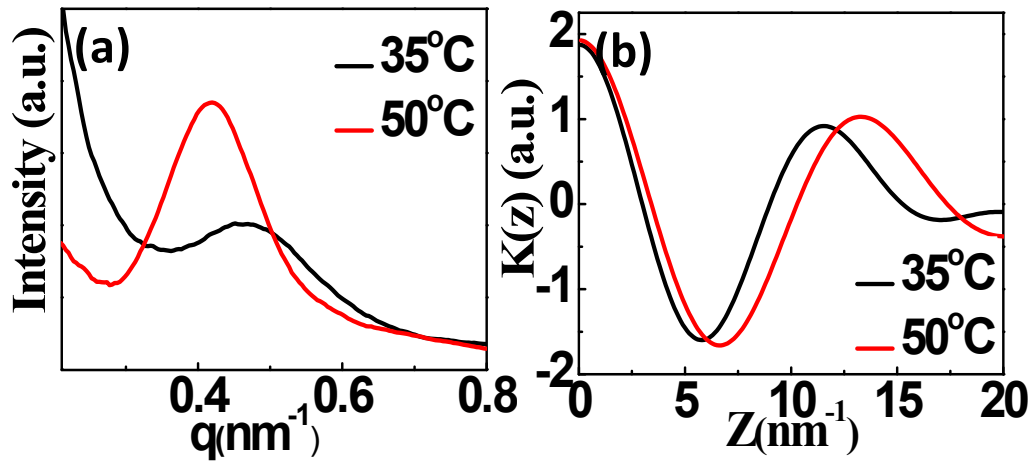
Tainan, 701, Taiwan



**Figure S1.** (a) POM, (b) SEM graphs, and (c) scheme for top surface of highly dendritic bands of PCL (in PCL/PPhMA blend) crystallized at  $T_c=35$  °C for 1 h.



**Figure S2.** WAXD plots of PCL (in PCL/PPhMA =80/20 blend) crystallized at two different crystallization temperatures ( $T_c$ = 35 °C vs. 50 °C).



**Figure S3.** (a) 1D SAXS analysis showing thickened lamellae or lamellar bundles in camellia-petal-patterned PCL spherulite aggregates at  $T_c=35$  and  $50^\circ\text{C}$ , and (b) correlation function of SAXS data.