

### Supplementary Information

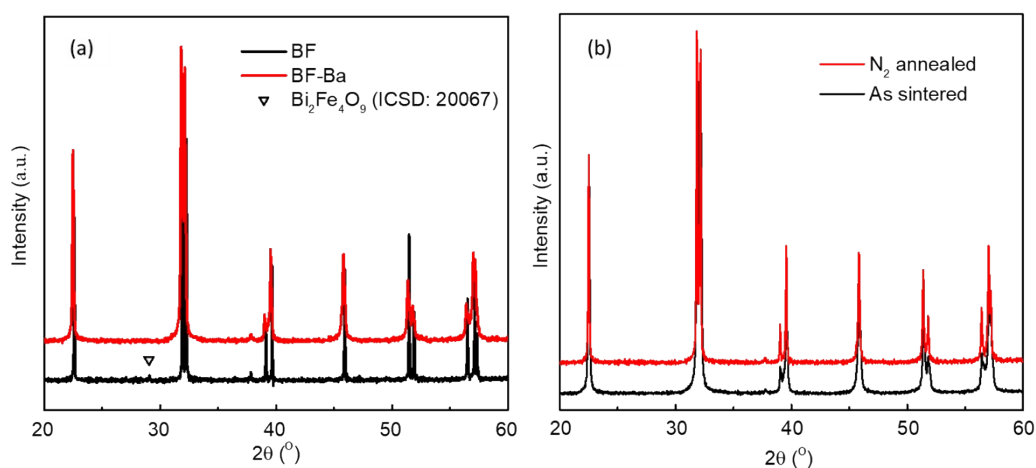


Figure S1. X-ray powder diffraction data for (a) Bi<sub>0.95</sub>Ba<sub>0.05</sub>FeO<sub>2.975</sub> and BiFeO<sub>3</sub> and (b) as sintered and N<sub>2</sub> annealed Bi<sub>0.95</sub>Ba<sub>0.05</sub>FeO<sub>2.975</sub> of crushed ceramics.

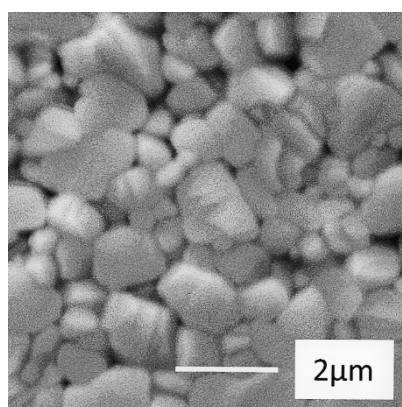


Figure S2. SEM secondary electron images for unpolished surface of Bi<sub>0.95</sub>Ba<sub>0.05</sub>FeO<sub>2.975</sub>.

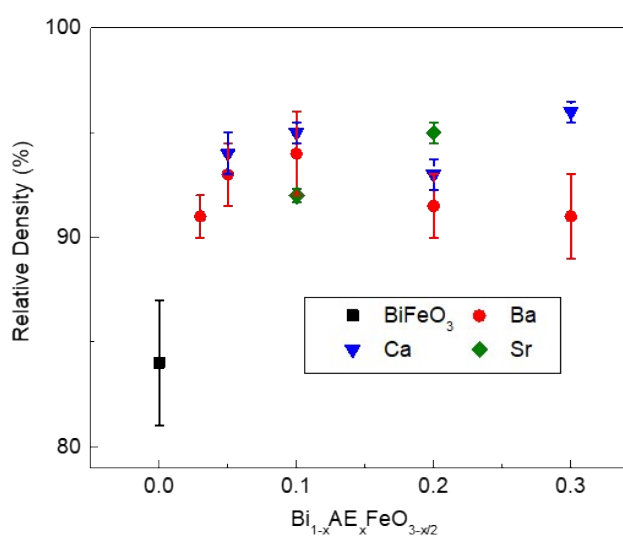


Figure S3. Relative density of BiFeO<sub>3</sub>, Bi<sub>1-x</sub>Ba<sub>x</sub>FeO<sub>3-x/2</sub>, Bi<sub>1-x</sub>Sr<sub>x</sub>FeO<sub>3-x/2</sub> and Bi<sub>1-x</sub>Ca<sub>x</sub>FeO<sub>3-x/2</sub> ceramics.