

Supplements Figure captions:

Fig. SI 1. Absorption and desorption curves of MnO<sub>2</sub> nanotubes (a), Fe<sub>0.2%</sub>MnO<sub>2</sub> (b), Fe<sub>0.5%</sub>MnO<sub>2</sub> (c), Fe<sub>1%</sub>MnO<sub>2</sub> (d) and Fe<sub>5%</sub>MnO<sub>2</sub> (e) samples.

Fig. SI 2. EDS-mapping from FE-SEM of MnO<sub>2</sub> nanotubes (a), Fe<sub>0.5%</sub>MnO<sub>2</sub> (b) and Fe<sub>5%</sub>MnO<sub>2</sub> (c) samples.

Fig. SI 3. EDS-mapping from FE-TEM of MnO<sub>2</sub> nanotubes (a), Fe<sub>0.5%</sub>MnO<sub>2</sub> (b) and Fe<sub>5%</sub>MnO<sub>2</sub> (c) samples.

Fig. SI 4. NO<sub>x</sub> conversion rates of samples with 0.1 g catalyst, 500 ppmv NO, 500 ppmv NH<sub>3</sub>, 5% O<sub>2</sub> and N<sub>2</sub> as the equilibrium gas.

Fig. SI 5. FESEM picture of Fe<sub>0.5%</sub>MnO<sub>2</sub> sample after compression used in NH<sub>3</sub>-SCR experiment.

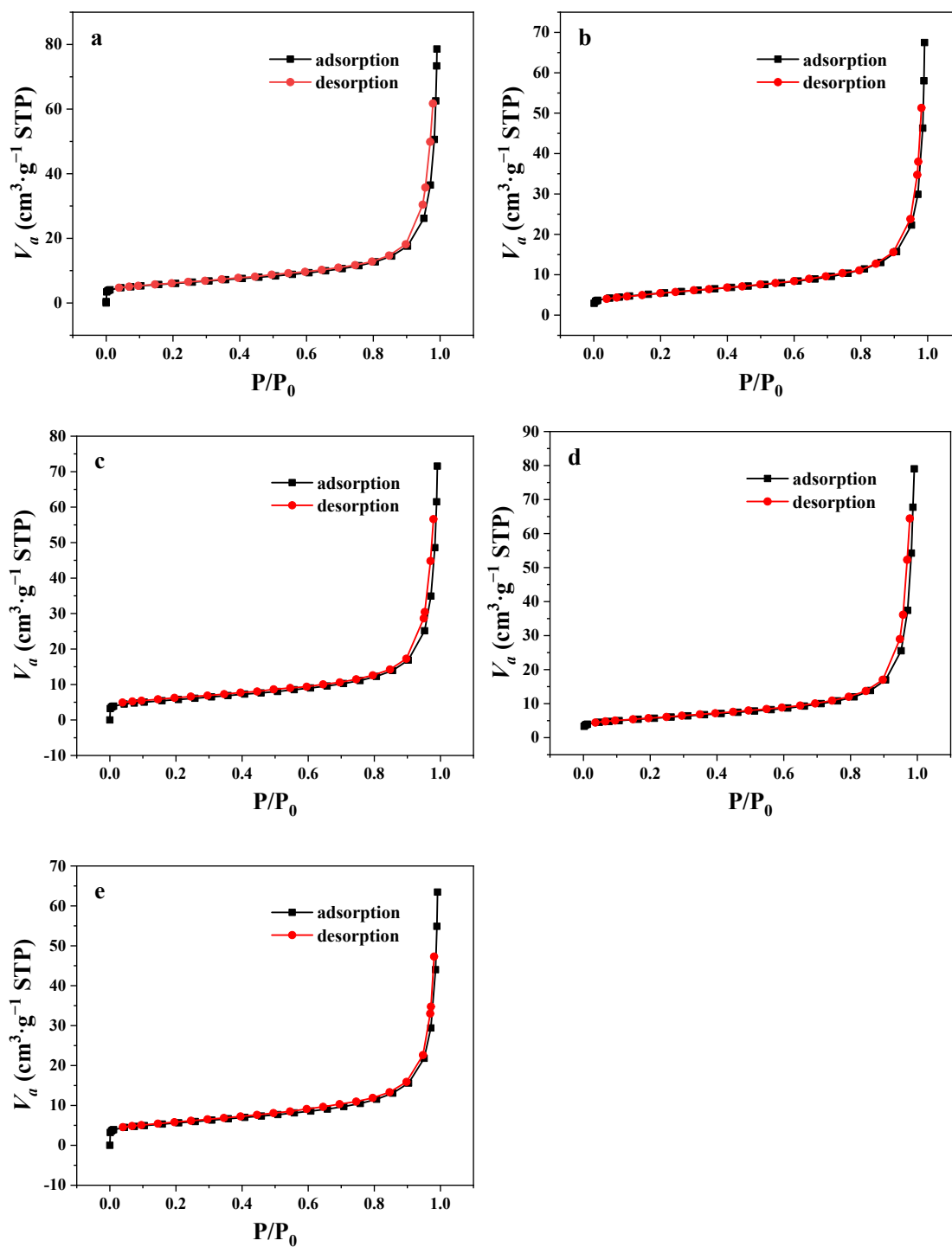


Fig. SI 1. Adsorption and desorption curves of  $\text{MnO}_2$  nanotubes (a),  $\text{Fe}_{0.2\%}\text{MnO}_2$  (b),  $\text{Fe}_{0.5\%}\text{MnO}_2$  (c),  $\text{Fe}_{1\%}\text{MnO}_2$  (d) and  $\text{Fe}_{5\%}\text{MnO}_2$  (e) samples.

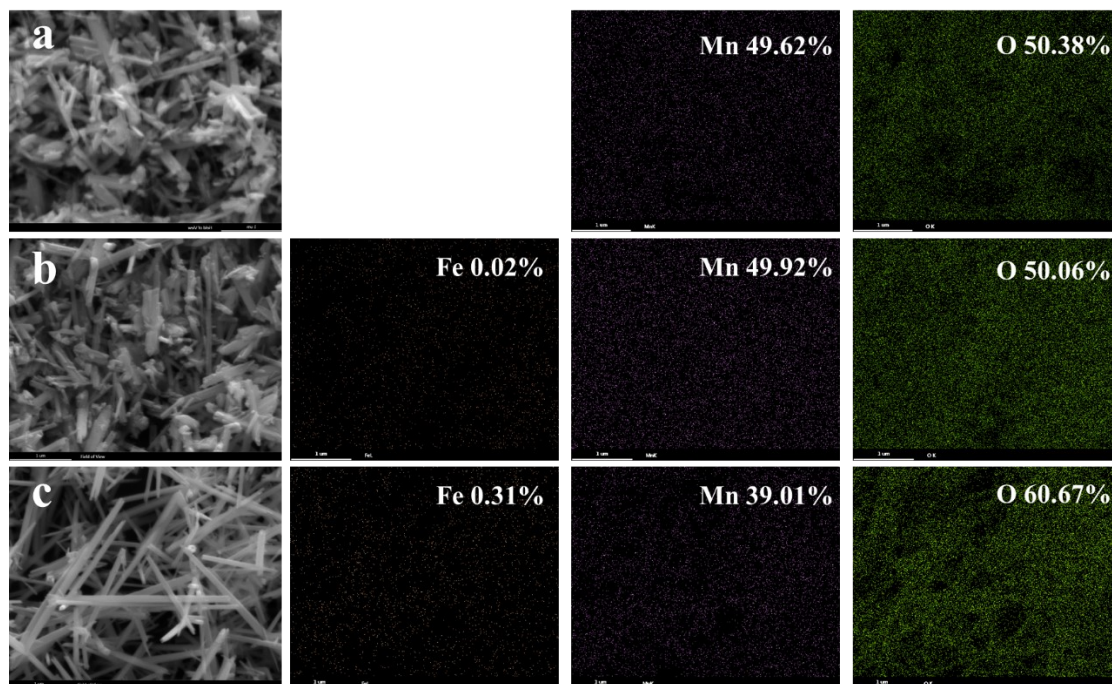


Fig. SI 2. EDS-mapping from FE-SEM of  $\text{MnO}_2$  nanotubes (a),  $\text{Fe}_{0.5\%}\text{MnO}_2$  (b) and  $\text{Fe}_{5\%}\text{MnO}_2$  (c) samples.

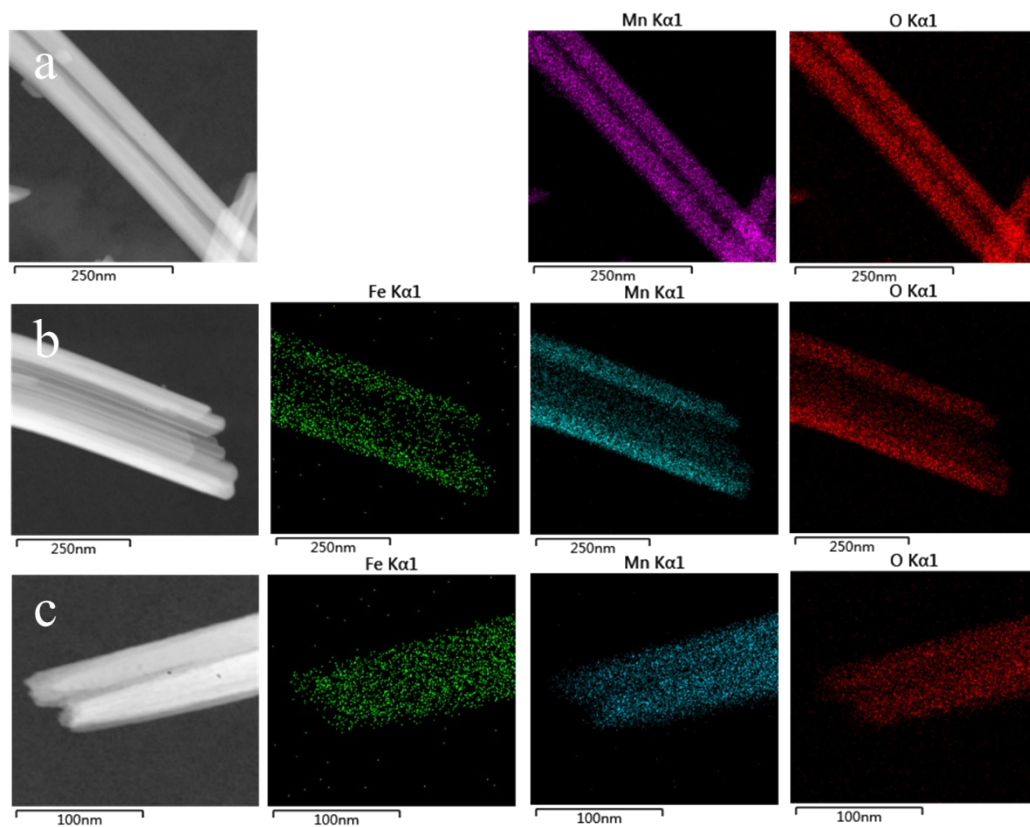


Fig. SI 3. EDS-mapping from FE-TEM of MnO<sub>2</sub> nanotubes (a), Fe<sub>0.5%</sub>MnO<sub>2</sub> (b) and Fe<sub>5%</sub>MnO<sub>2</sub> (c) samples.

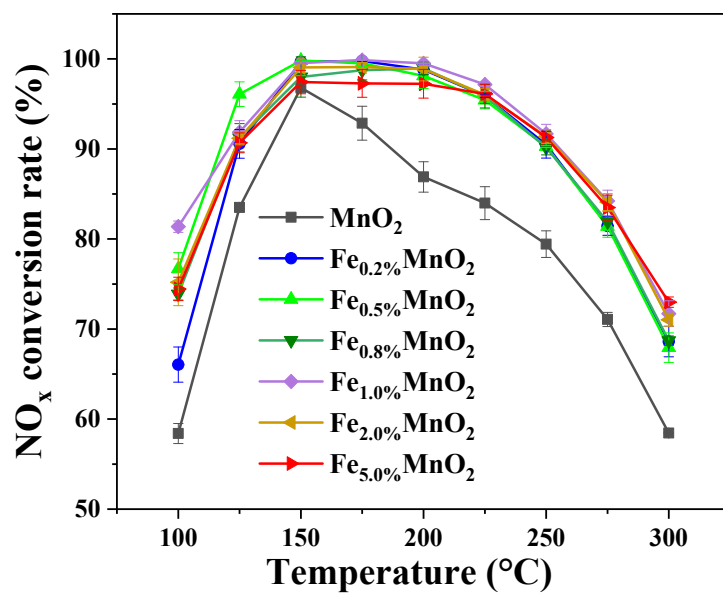


Fig. SI 4. NO<sub>x</sub> conversion rates of samples with 0.1 g catalyst, 500 ppmv NO, 500 ppmv NH<sub>3</sub>, 5% O<sub>2</sub> and N<sub>2</sub> as the equilibrium gas.

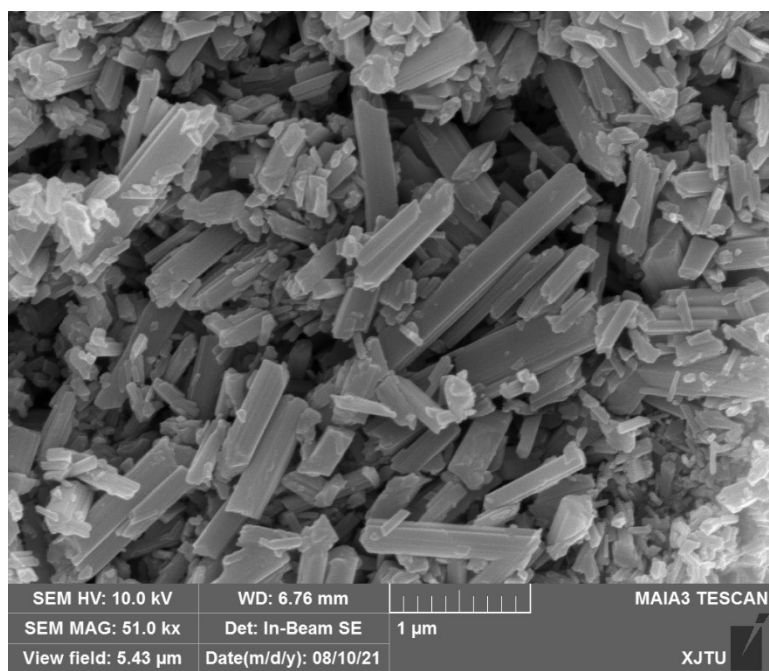


Fig. SI 5. FESEM picture of  $\text{Fe}_{0.5\%}\text{MnO}_2$  sample after compression used in  $\text{NH}_3$ -SCR experiment.