

SUPPORTING INFORMATION

Consideration of predicted small-molecule metabolites in computational toxicology

Marina Garcia de Lomana^{1,2}, Fredrik Svensson³, Andrea Volkamer⁴, Miriam Mathea^{1} and Johannes Kirchmair^{2*}*

¹ BASF SE, 67063 Ludwigshafen am Rhein, Germany

² Department of Pharmaceutical Sciences, Faculty of Life Sciences, University of Vienna, 1090 Vienna, Austria

³ Alzheimer's Research UK UCL Drug Discovery Institute, University College London, London WC1E 6BT, U.K.

⁴ In Silico Toxicology and Structural Bioinformatics, Institute of Physiology, Charité Universitätsmedizin Berlin, 10117 Berlin, Germany

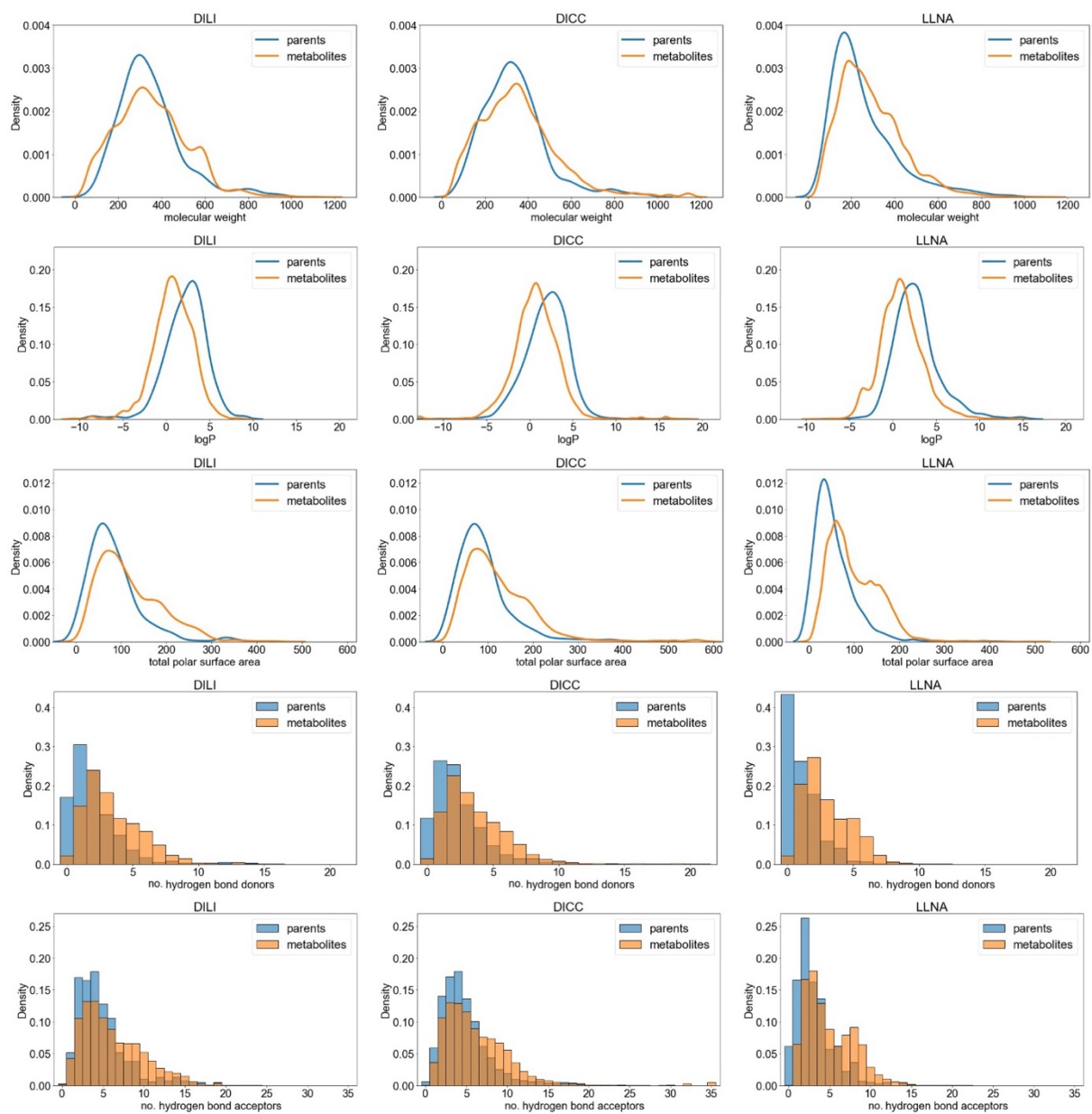


Figure S1. Comparison of the physicochemical properties of the parent compounds (blue) and predicted metabolites (orange) represented in the DILI, DICC and LLNA data sets.

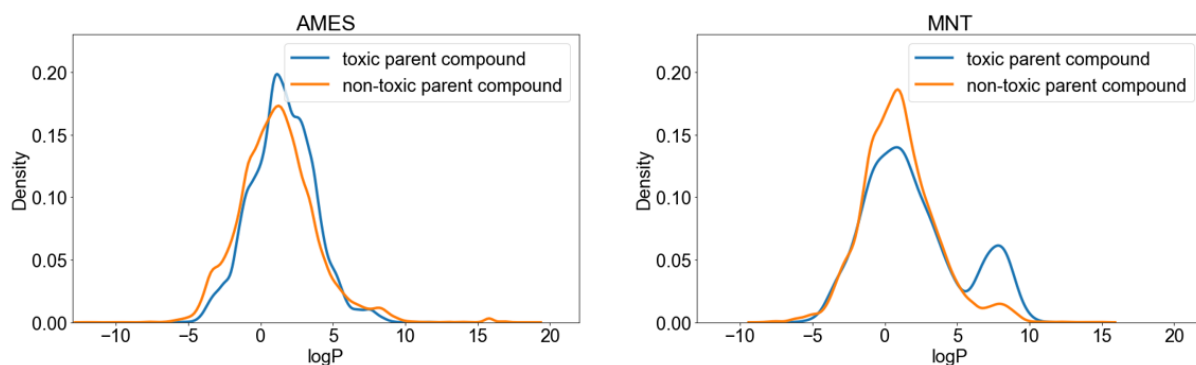


Figure S2. Distribution of the logP values for the metabolites from toxic (blue) and non-toxic (orange) parent compounds in the AMES and MNT data sets.

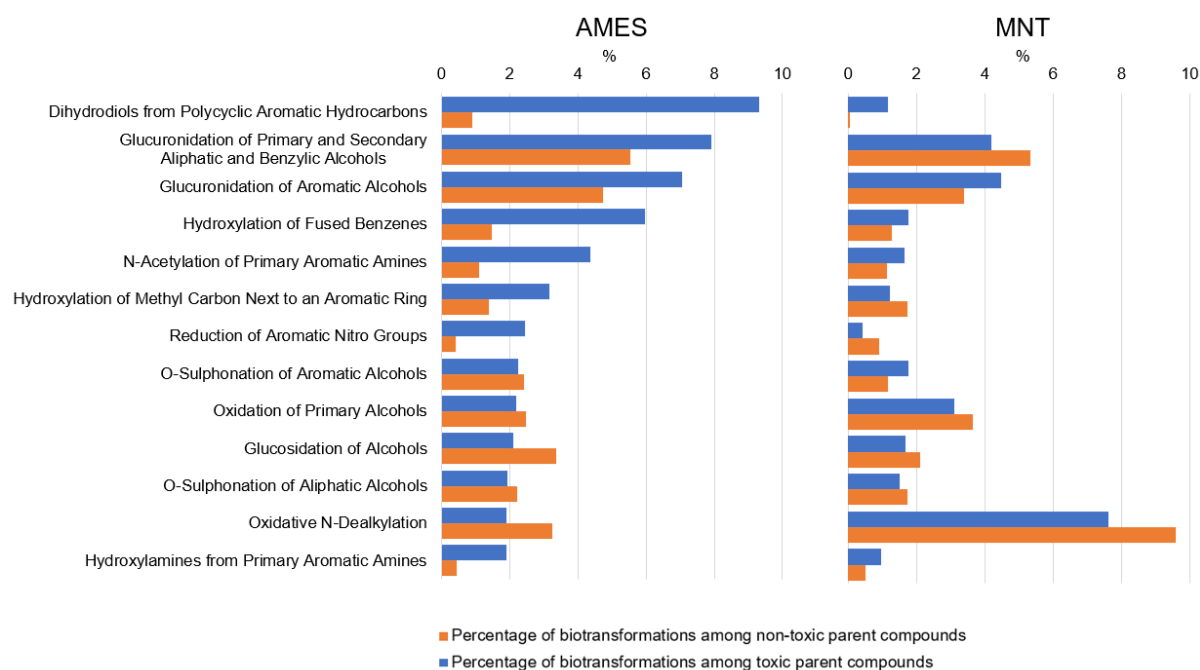


Figure S3. Percentage of occurrence of a subset of biotransformations between toxic (blue) and non-toxic (orange) compounds. The selected subset are the 15 biotransformations most often observed for toxic compounds in AMES. Although some biotransformations appear more often in one of the activity classes, these ratios are different between endpoints.