

Supporting Information

Enhancing interfacial stability of $\text{LiNi}_{0.8}\text{Co}_{0.15}\text{Al}_{0.05}\text{O}_2$ cathode materials by surface-concentration gradient strategy

Xin'an Zhou,^a Feilong Zhang,^{a,b} Chao Wang,^a Xiaolan Fu,^a Bo Wang,^a Dongni Zhao,^{a,b} Peng Wang,^a Wenbiao Liang,^a and Shiyu Li^{*a,b,c}

^a *School of Petrochemical Technology, Lanzhou University of Technology, Lanzhou 730050, China*

^b *Key Laboratory of Low Carbon Energy and Chemical Engineering of Gansu Province, Lanzhou 730050, China*

^c *Gansu Engineering Laboratory of Cathode Material for Lithium-ion Battery, Lanzhou, 730050, China*

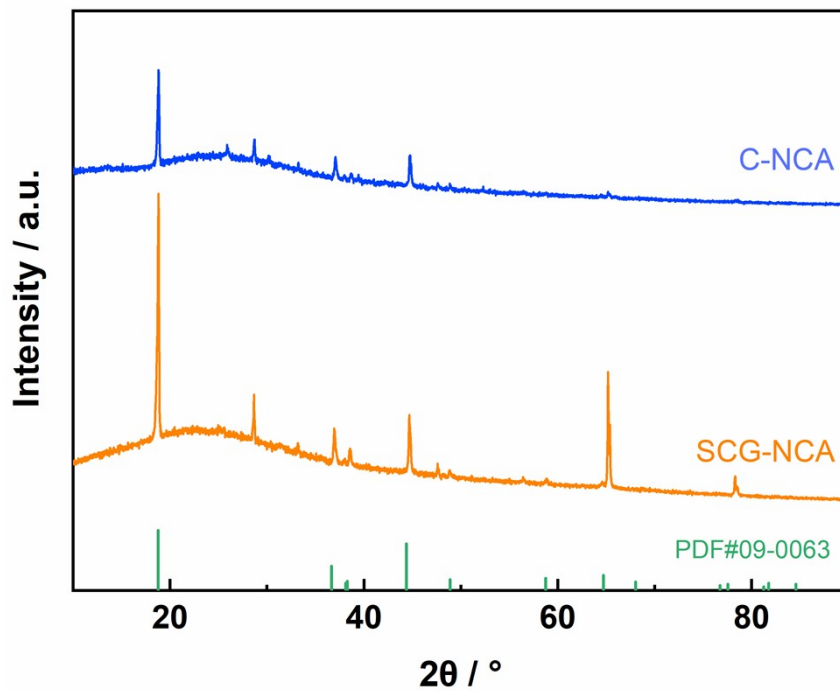


Fig. S1 XRD patterns of C-NCA and SCG-NCA after 200 cycles at 25 °C

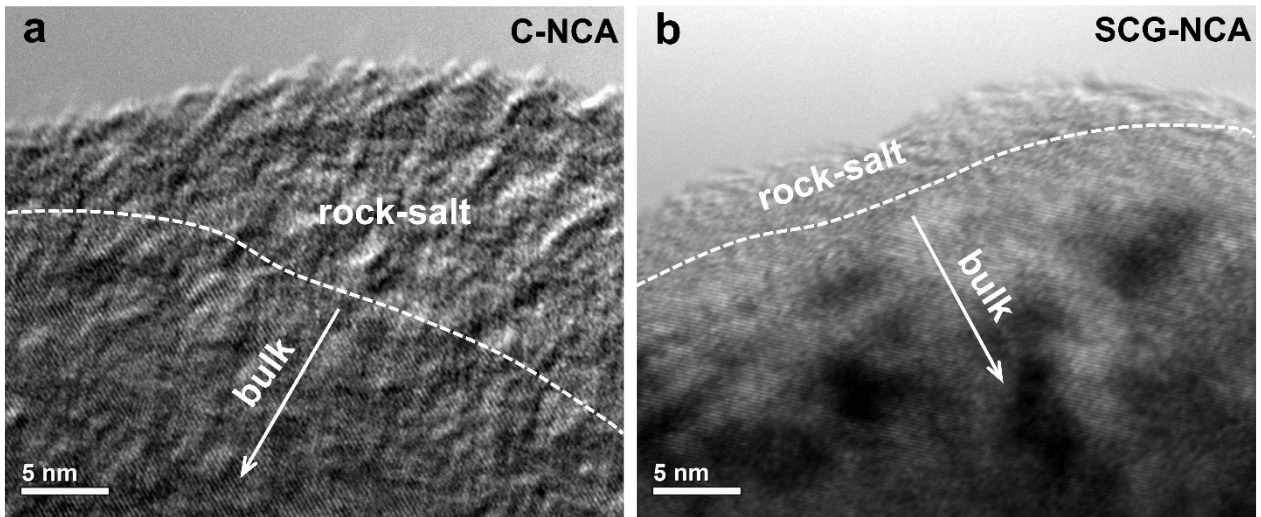


Fig. S2 HRTEM images for (a) C-NCA and (b) SCG-NCA after 200 cycles at 25 °C