

Supporting Information

Facile synthesis of organic/inorganic hybrid 2D structure tincone film by molecular layer deposition

GeonHo Baek ^a, Seunghwan Lee ^b, Hye-mi Kim ^b, Su Hwan Choi ^a and Jin-Seong Park^{*a,b}

^a Division of Nano-Scale Semiconductor Engineering, Hanyang University, 222 Wangsimni-ro, Seongdong-gu, Seoul 04763, Republic of Korea

^b Division of Materials Science and Engineering, Hanyang University, 222 Wangsimni-ro, Seongdong-gu, Seoul 04763, Republic of Korea

* Corresponding author

E-mail: jsparklime@hanyang.ac.kr (Jin-Seong Park)

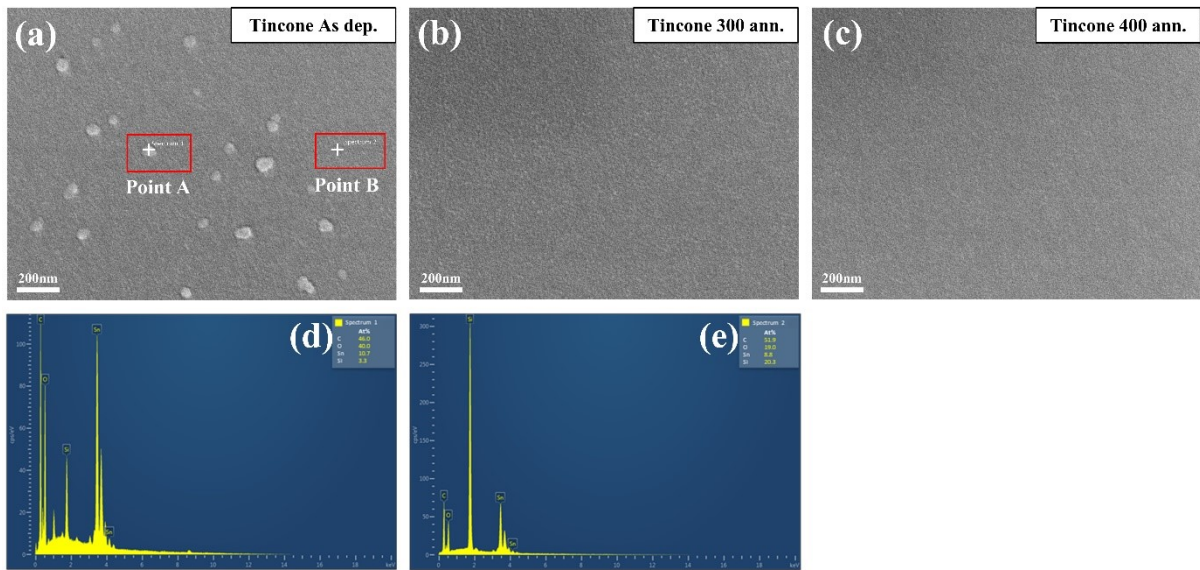


Fig. S1. Analysis of surface morphology of tincone thin film using SEM (a) As-dep tincone, (b) 300 °C post annealed tincone and (c) 400 °C post annealed tincone. (d) Point A and (e) Point B of as-dep tincone surface on EDS analysis.

Point No.	Si	Sn	O	C	Sn : O : C
Point A	3.3	10.7	40.0	46.0	1 : 3.7 : 4.3
Point B	20.3	8.8	19.0	51.9	1 : 2.2 : 5.9

Table. S1. The EDS composition of point A and point B on as-dep tincone surfaces.

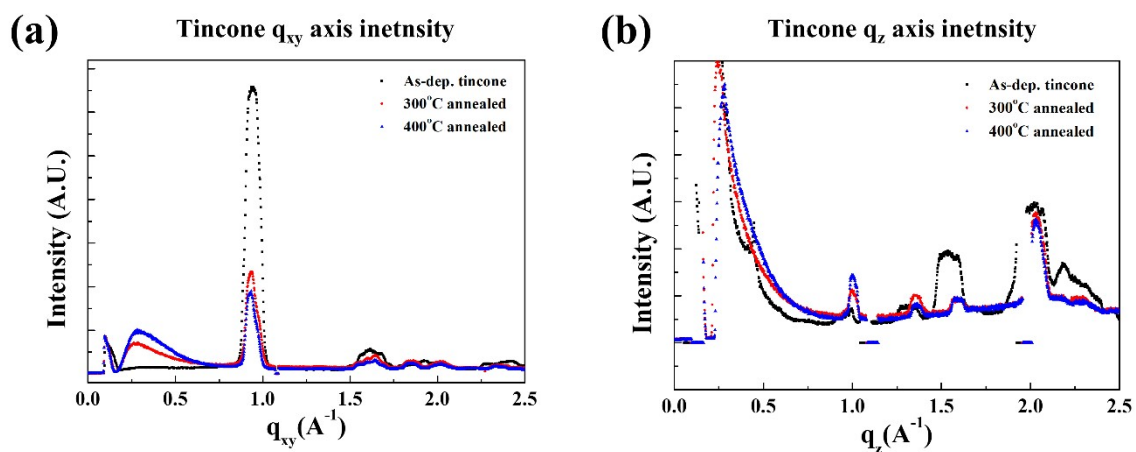


Fig. S2. (a) q_{xy} and (b) q_z line peak intensities from the WAXS image of the tincone sample.