

Supporting information for

Insights into HONO sources from observations during a solar eclipse

Ajit Singh¹, Leigh R. Crilley², William J. Bloss^{1*} and Francis D. Pope¹

¹School of Geography, Earth and Environmental Sciences, University of Birmingham,
Birmingham, B15 2TT, UK

²Department of Chemistry, York University, Toronto, Canada

*Corresponding author: William J. Bloss (W.J.Bloss@bham.ac.uk)

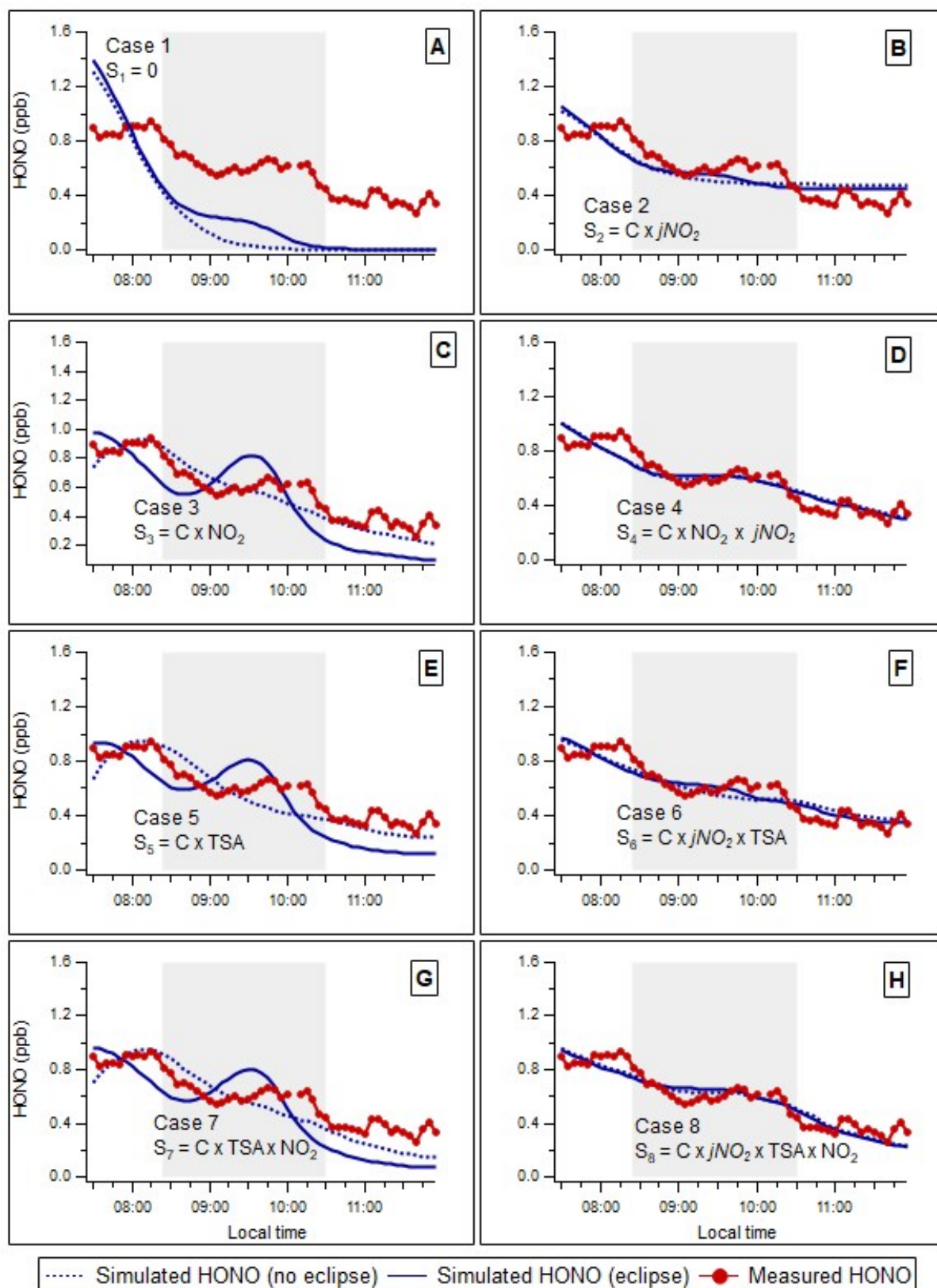


Figure S1 Comparison between measured (red points) and calculated HONO mixing ratio during the solar eclipse, using actual eclipse photolysis frequencies (solid blue line) and (hypothetical) non-eclipse photolysis frequencies (dotted blue line). Fitting optimised throughout the pre-eclipse hour, eclipse period, and post-eclipse hour. Shading indicates eclipse duration from first to last contact. Source scenarios as defined in Table 1.

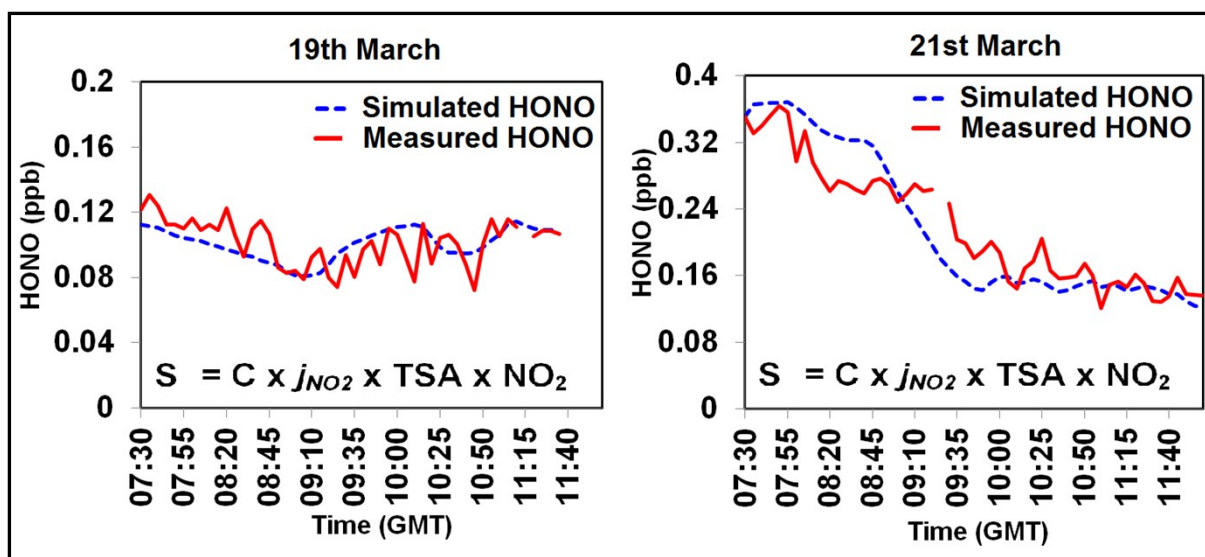


Figure S2 Comparison between simulated HONO and measured HONO for days preceding and following the eclipse.