

Supporting information

Release of microplastic fibres and fragmentation to
billions of nanoplastics from period products:
preliminary assessment of potential health
implications

*Leonardo Pantoja Munoz**, *Alejandra Gonzalez Baez*, *Diane Purchase*[‡], *Huw Jones*[‡] and *Hemda
Garellick*[‡]

Department of Natural Sciences, Faculty of Science and Technology, Middlesex University, The
Burroughs, NW4 4BT, London , UK.

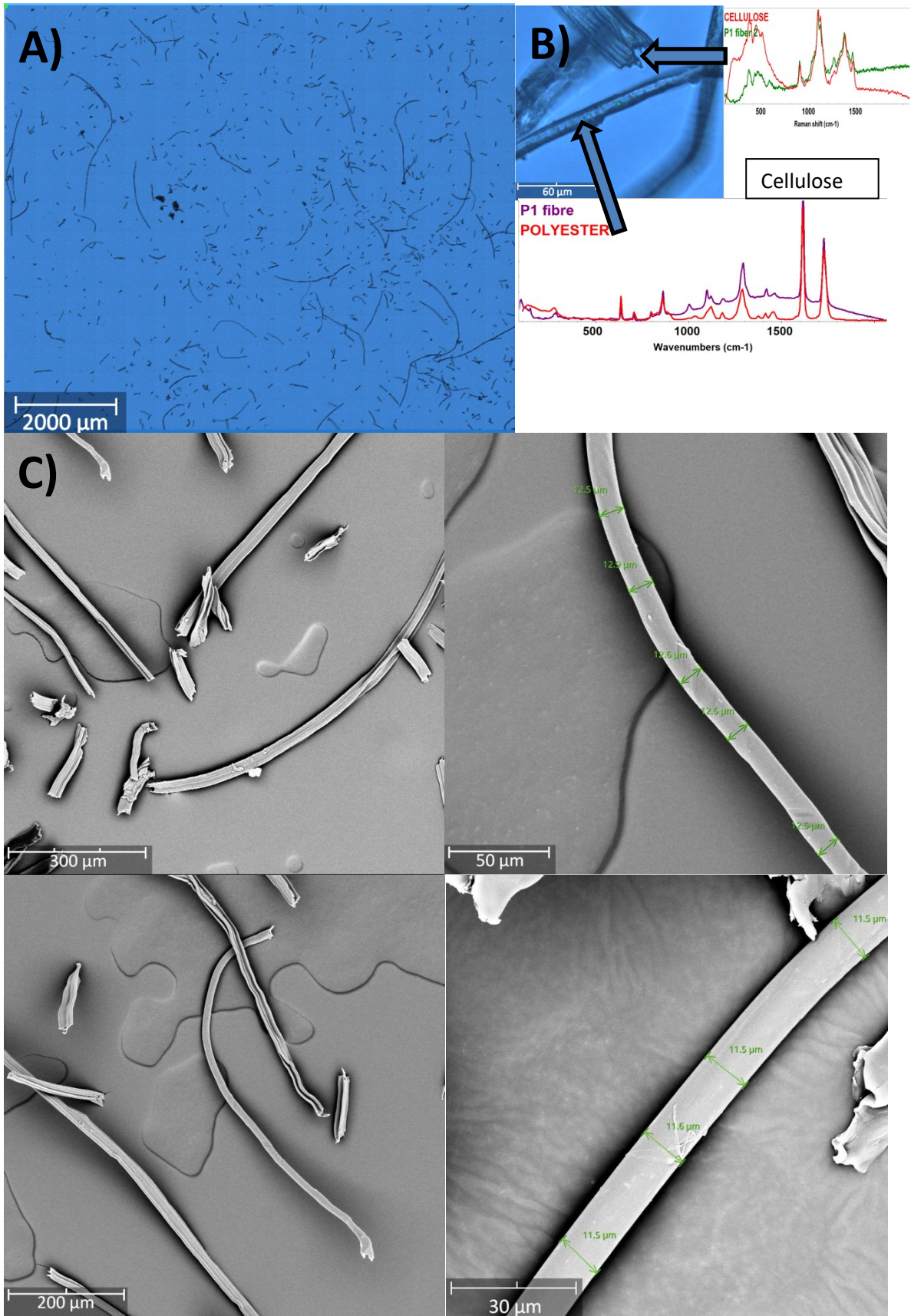


Figure S1 Details of the match analysis Product 1 (P1), A) transmitted microscopy mosaic, B) confocal Raman match and C) FEG-SEM

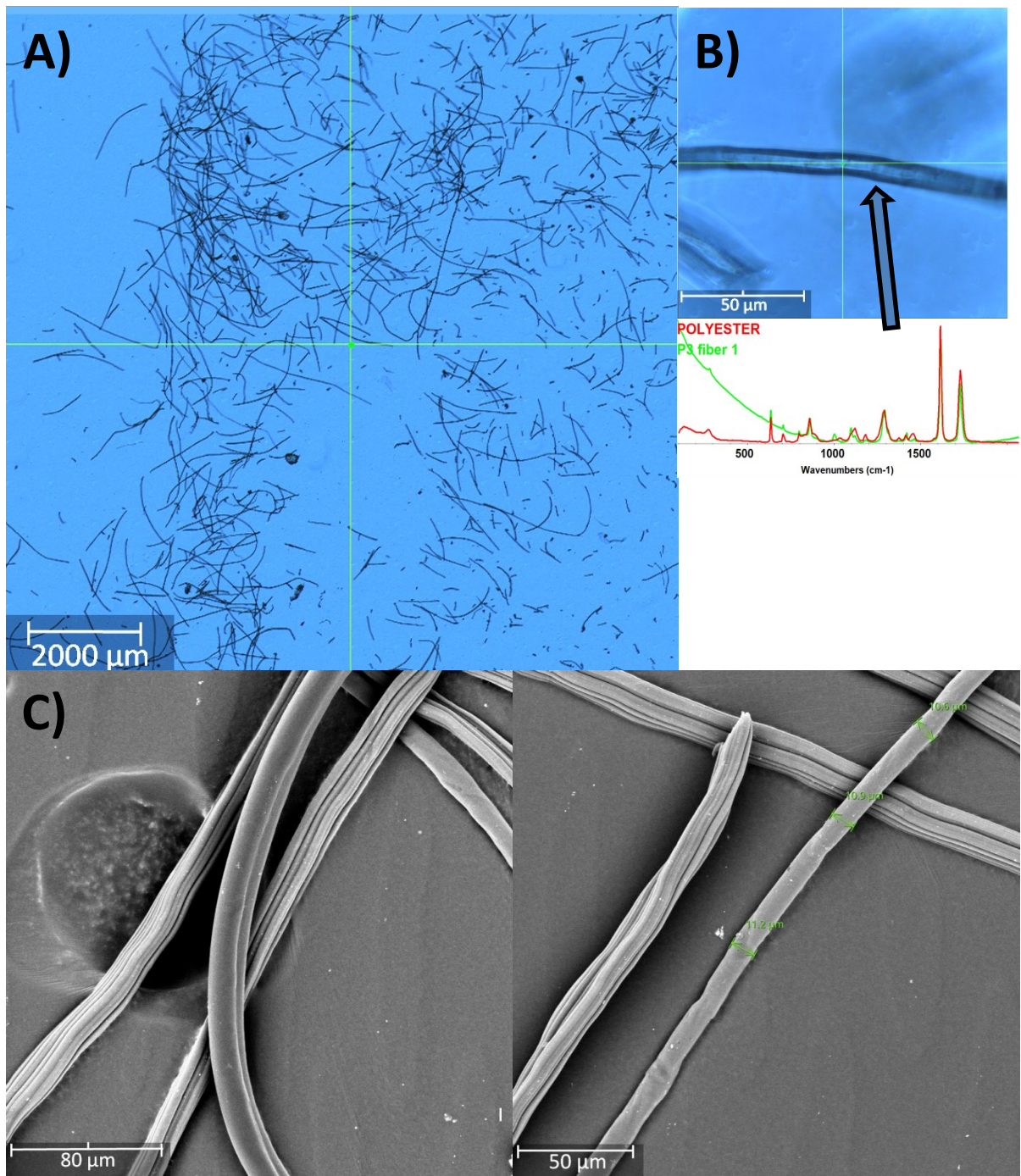


Figure S2 Details of the match analysis Product 3 (P3), A) transmitted microscopy mosaic, B) confocal Raman match and C) FEG-SEM

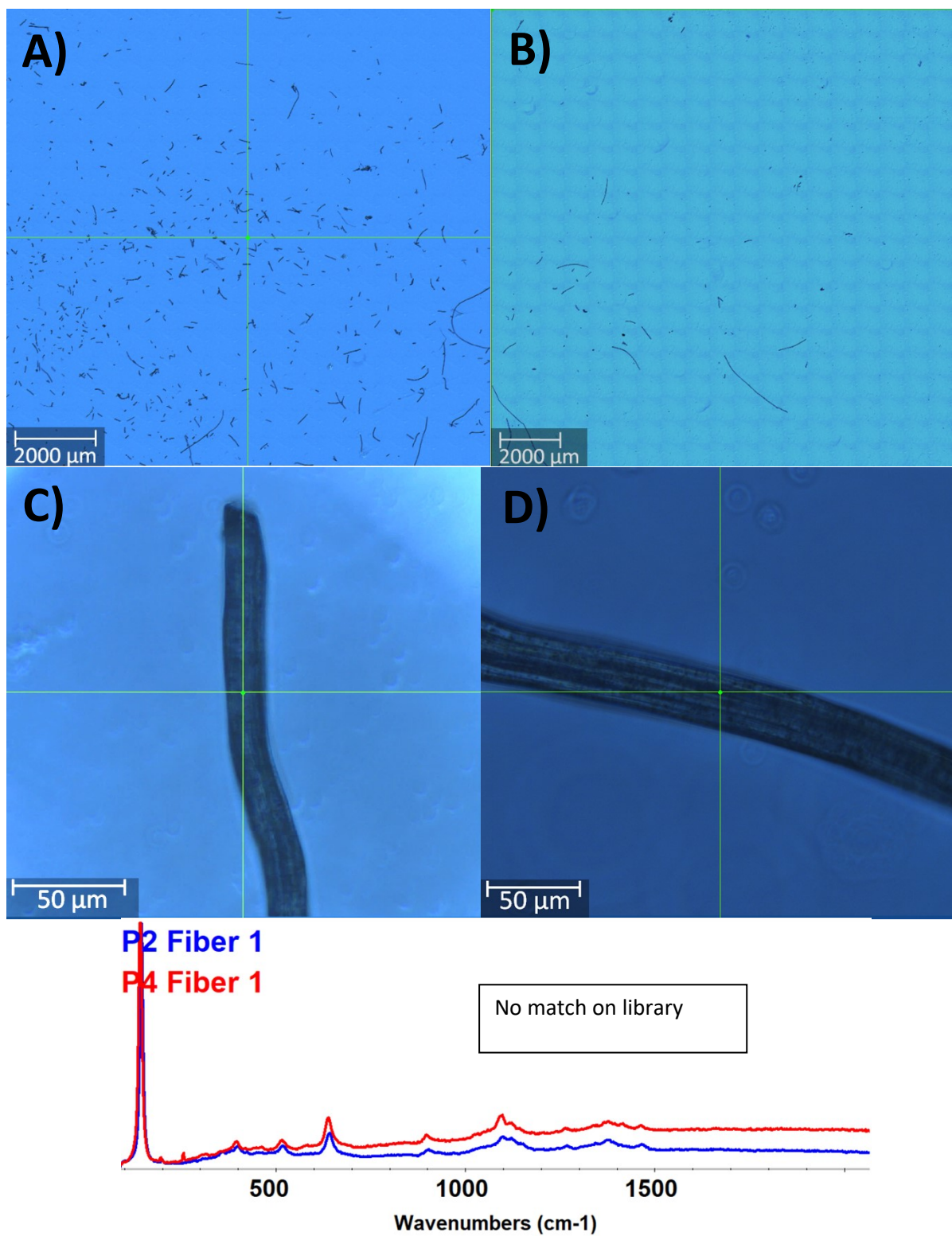


Figure S3 Details of the match analysis A) Product 2 (P2) and B) Product 4 (P4), transmitted microscopy mosaic and confocal Raman spectra, C) Product 2 and D) Product 4

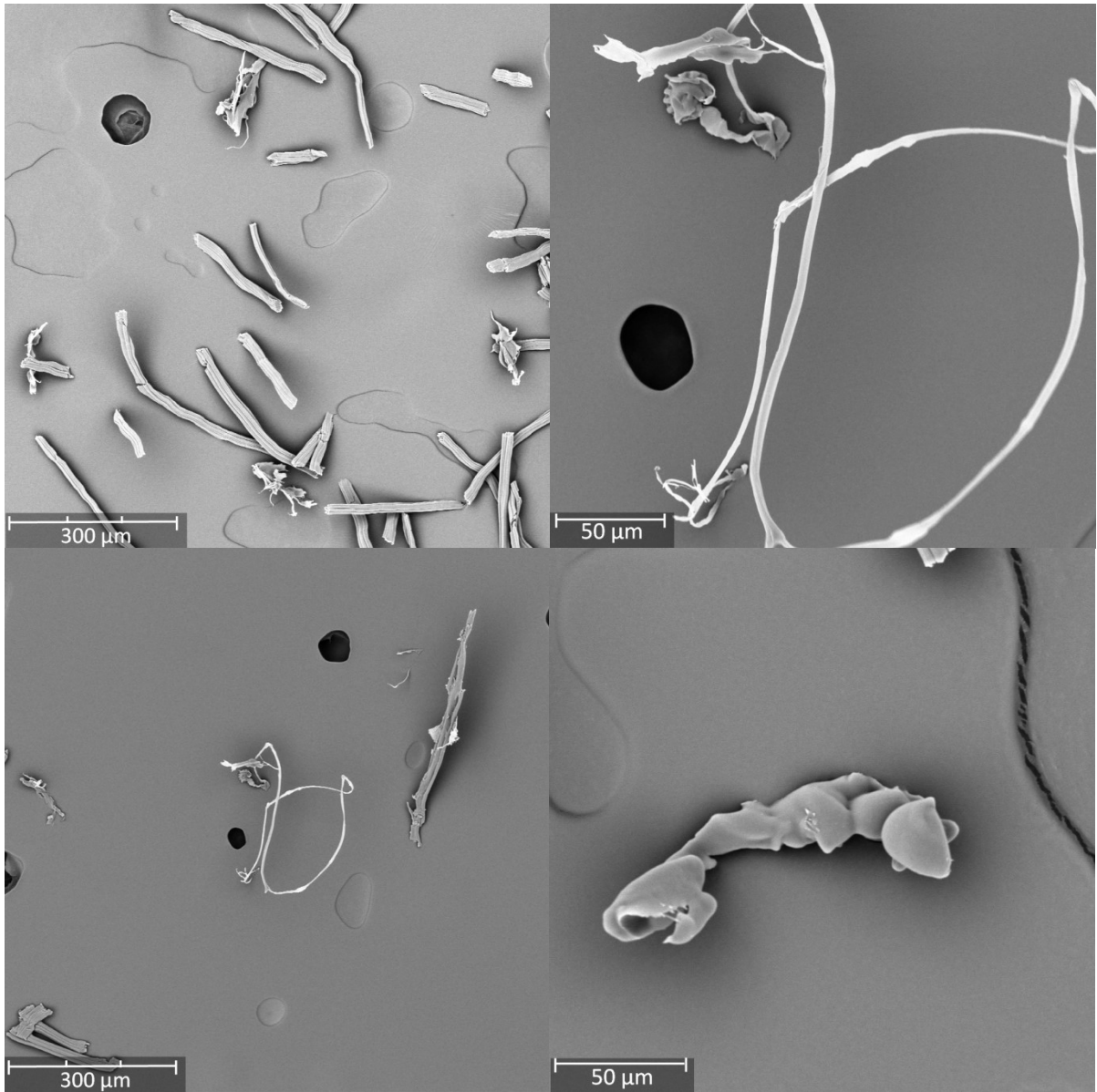


Figure S4 Details of the match analysis Product 2 (P2), FEG-SEM

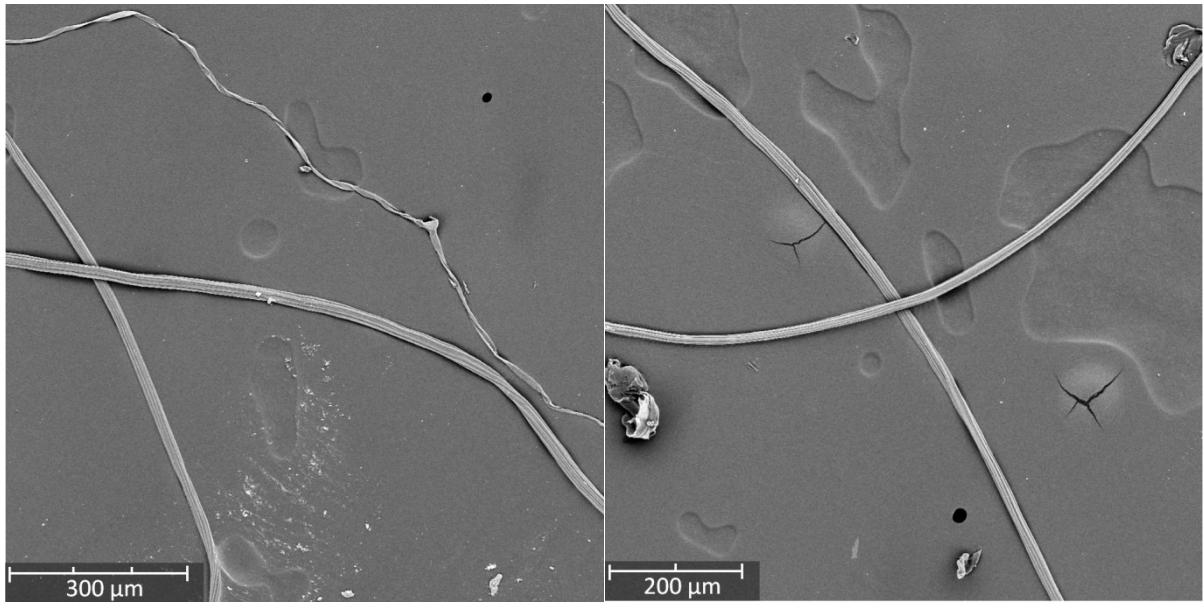


Figure S5 Details of the match analysis Product 4 (P4), FEG-SEM

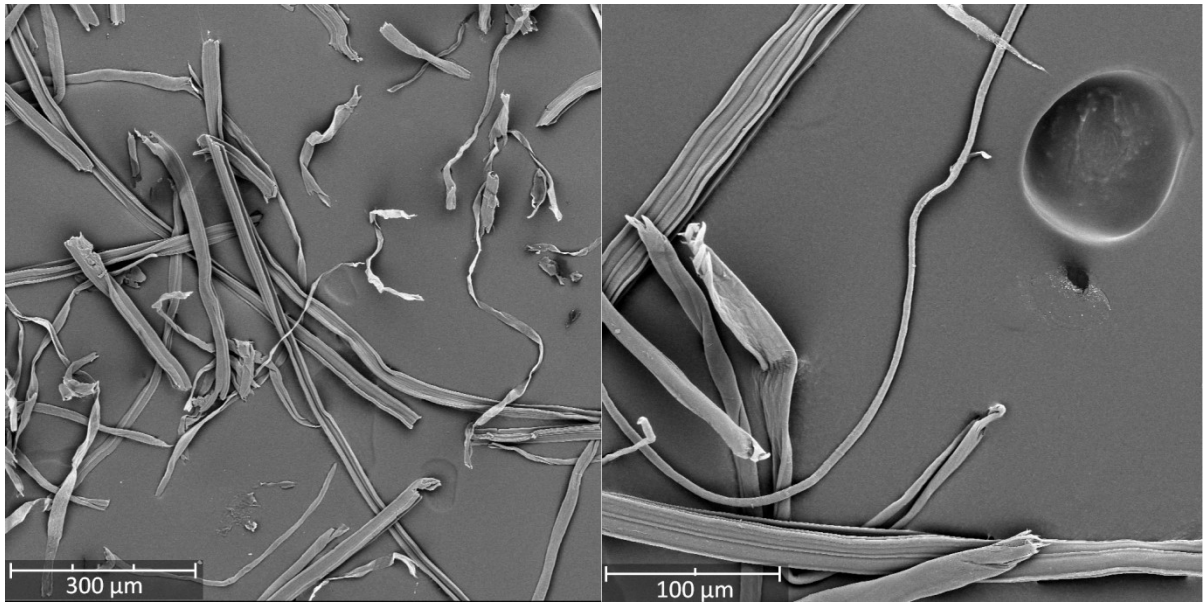


Figure S6 Details of the match analysis Product 5 (P5), FEG-SEM

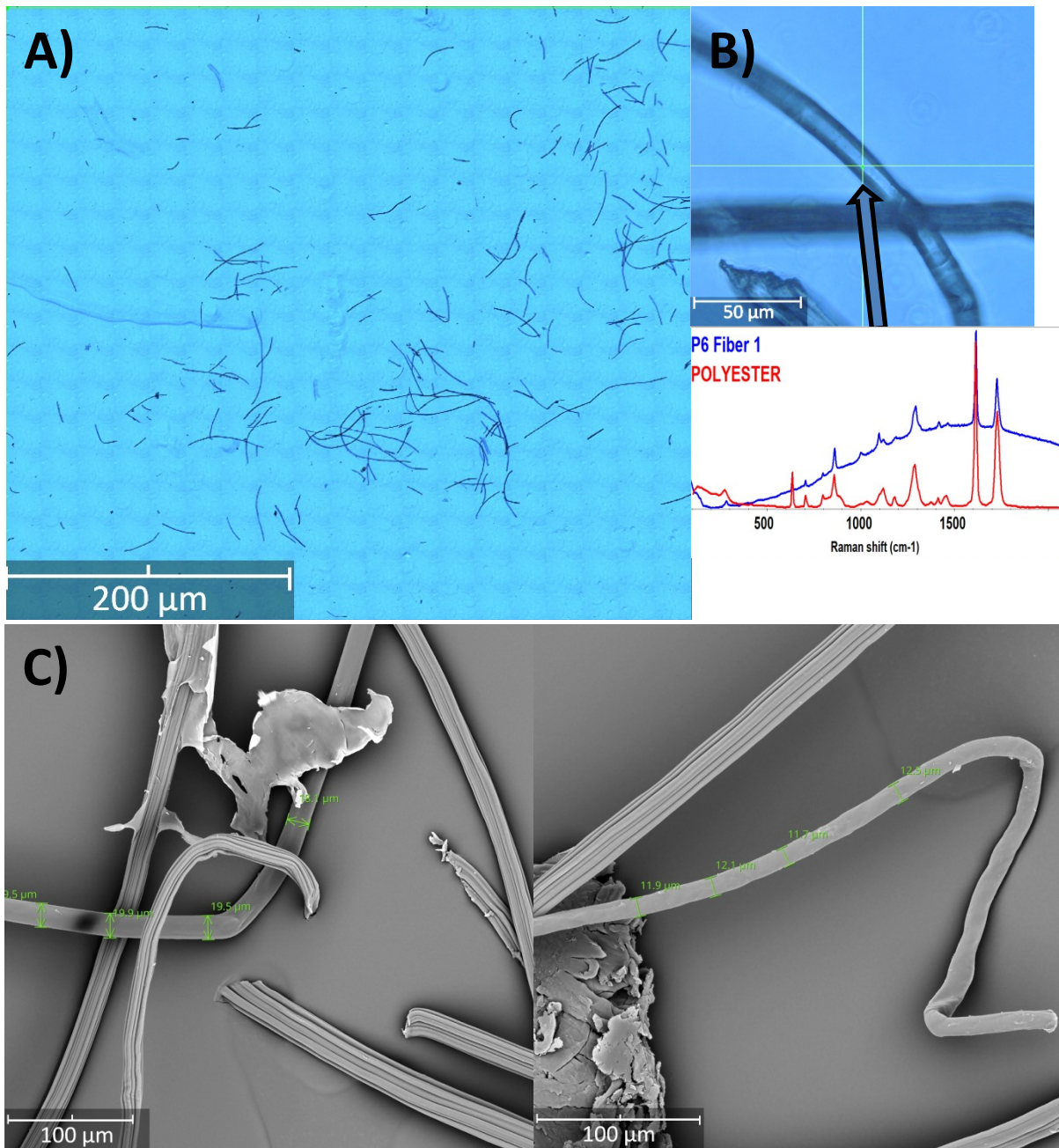


Figure S7 Details of the match analysis Product 6 (P6), A) transmitted microscopy mosaic, B) confocal Raman match and C) FEG-SEM

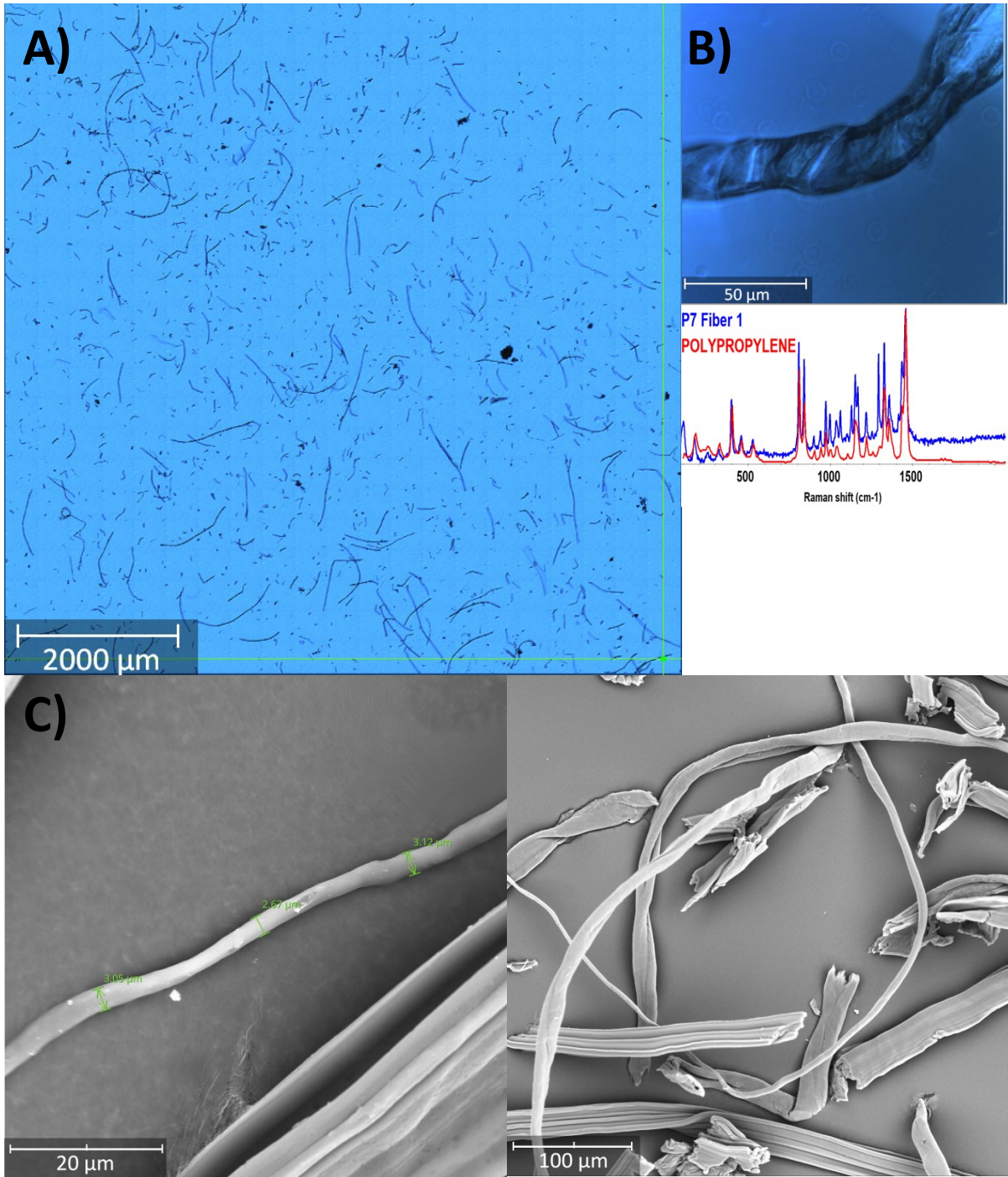


Figure S8 Details of the match analysis Product 7 (P7), A) transmitted microscopy mosaic, B) confocal Raman match and C) FEG-SEM

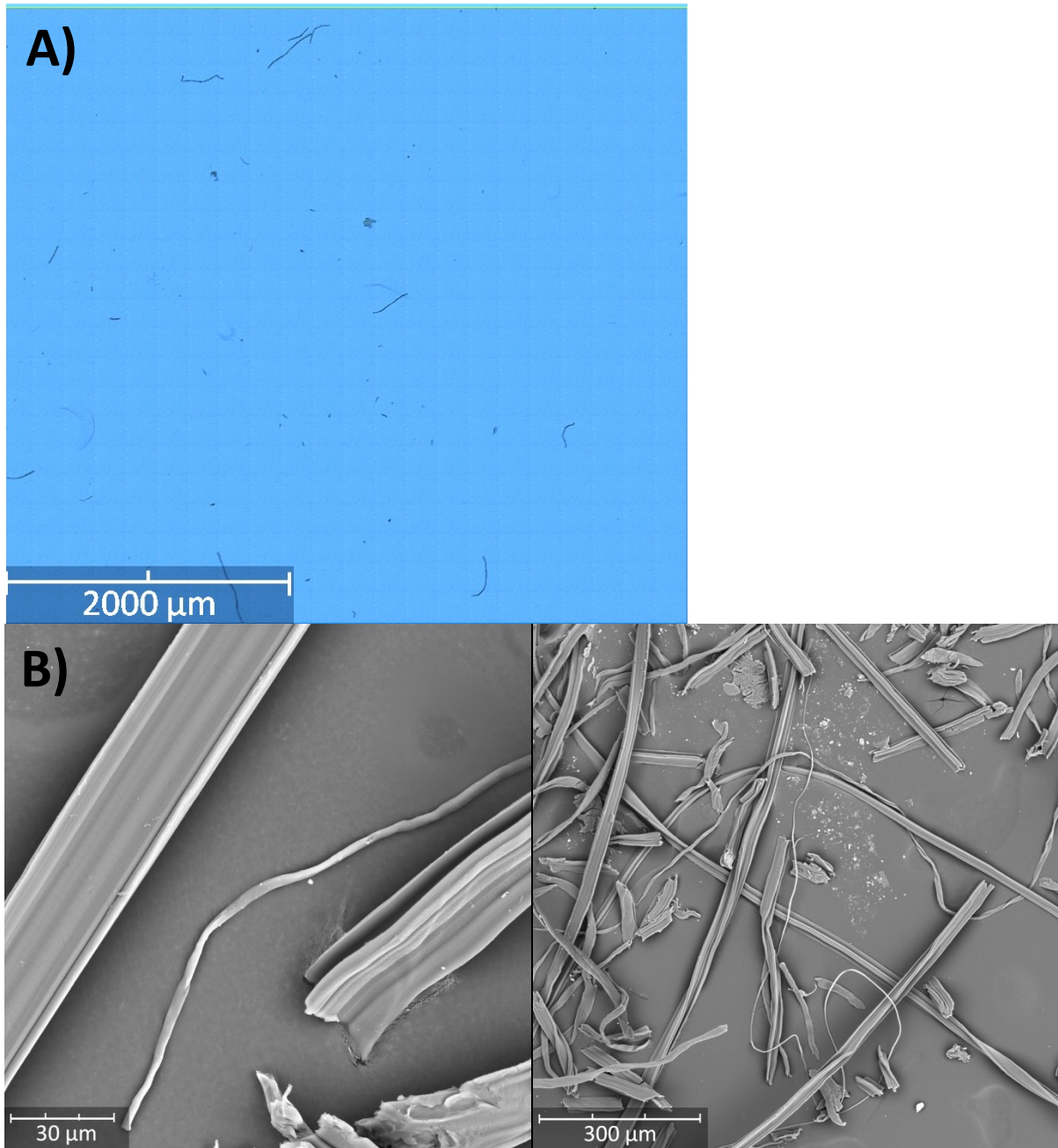


Figure S9 Details of the match analysis Product 8 (P8), A) transmitted microscopy mosaic and B) FEG-SEM

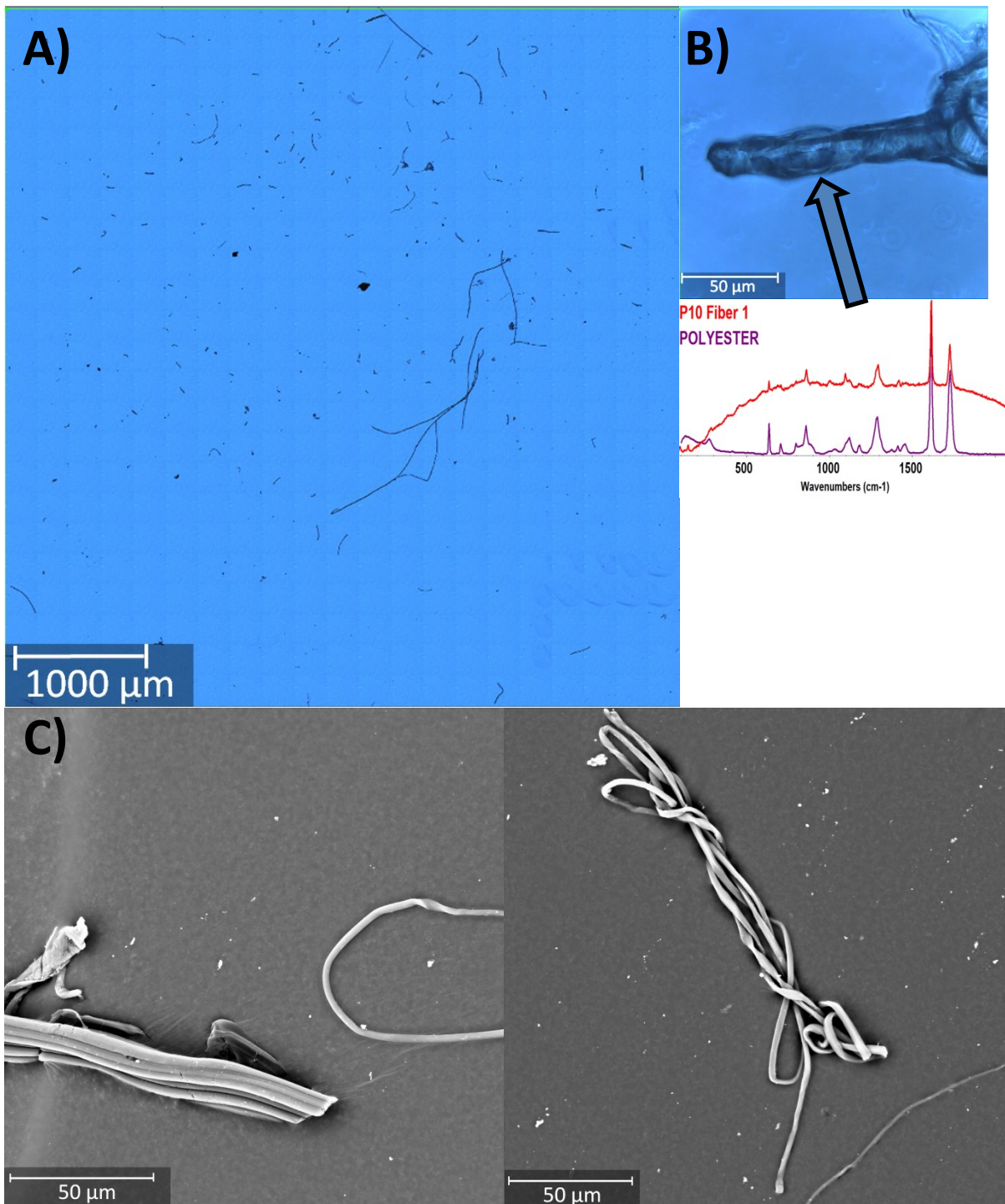


Figure S10 Details of the match analysis Product 10 (P10), A) transmitted microscopy mosaic, B) confocal Raman match and C) FEG-SEM

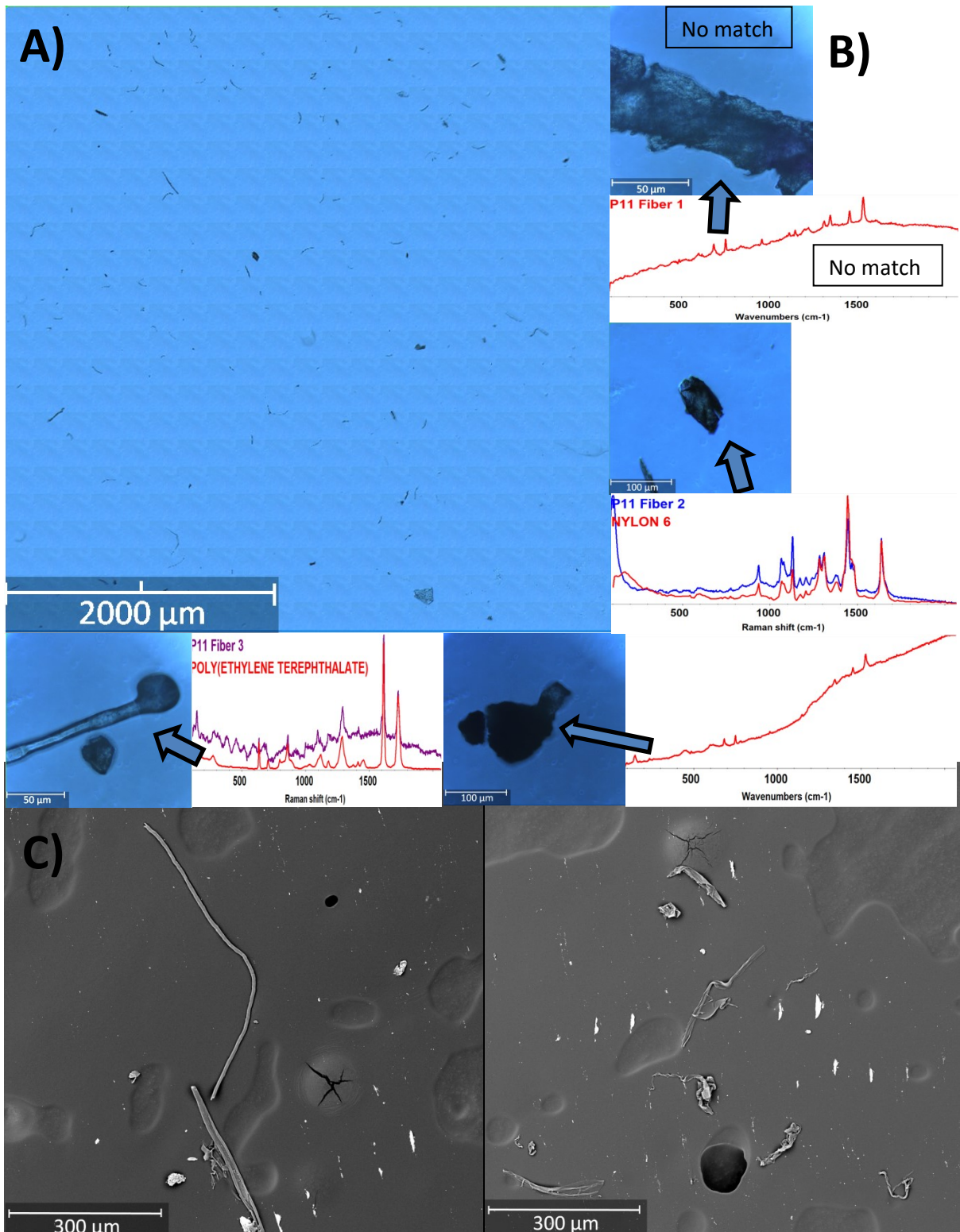


Figure S11 Details of the match analysis Product 11 (P11), A) transmitted microscopy mosaic, B) confocal Raman match and C) FEG-SEM

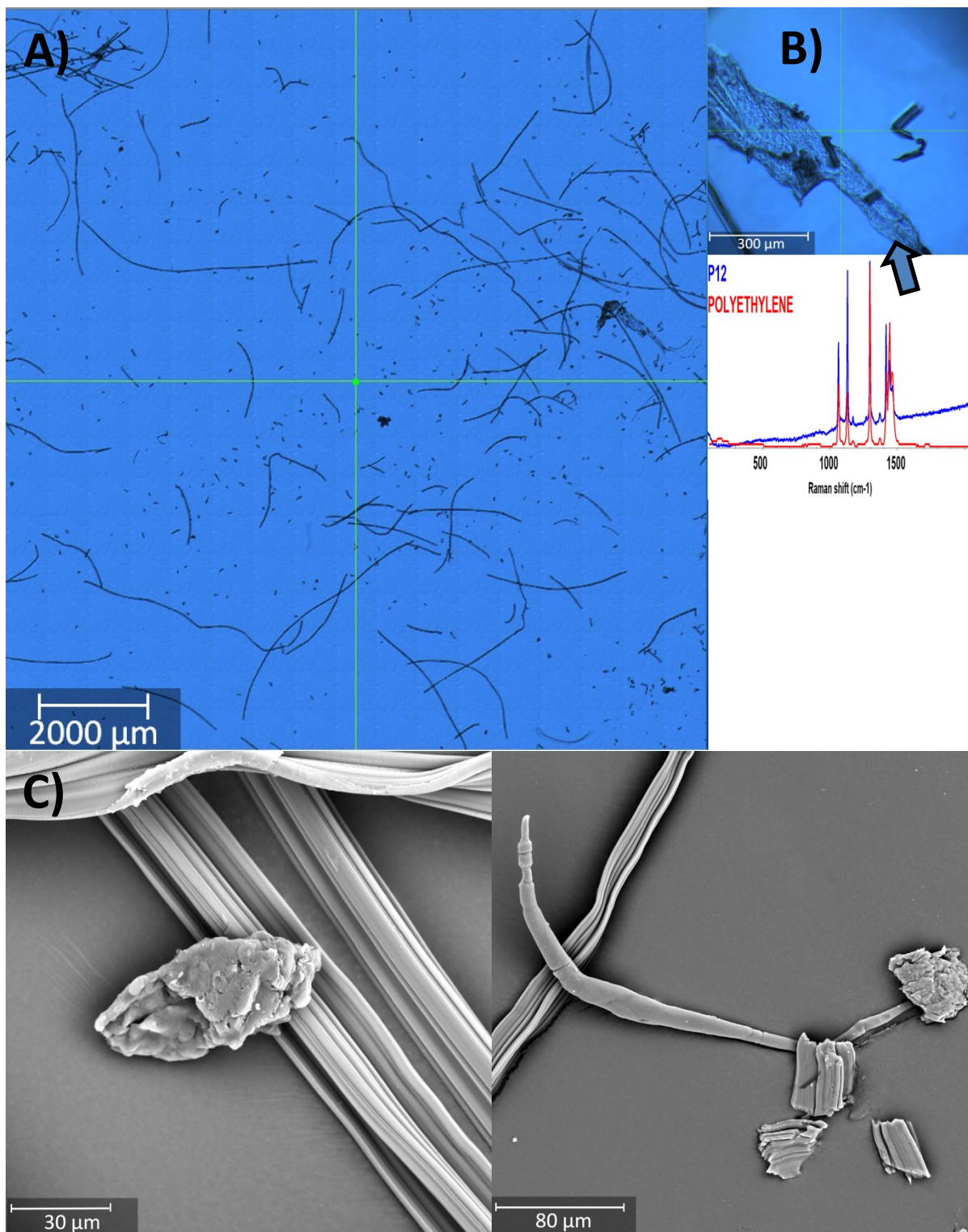


Figure S12 Details of the match analysis Product 12 (P12), A) transmitted microscopy mosaic, B) confocal Raman match and C) FEG-SEM

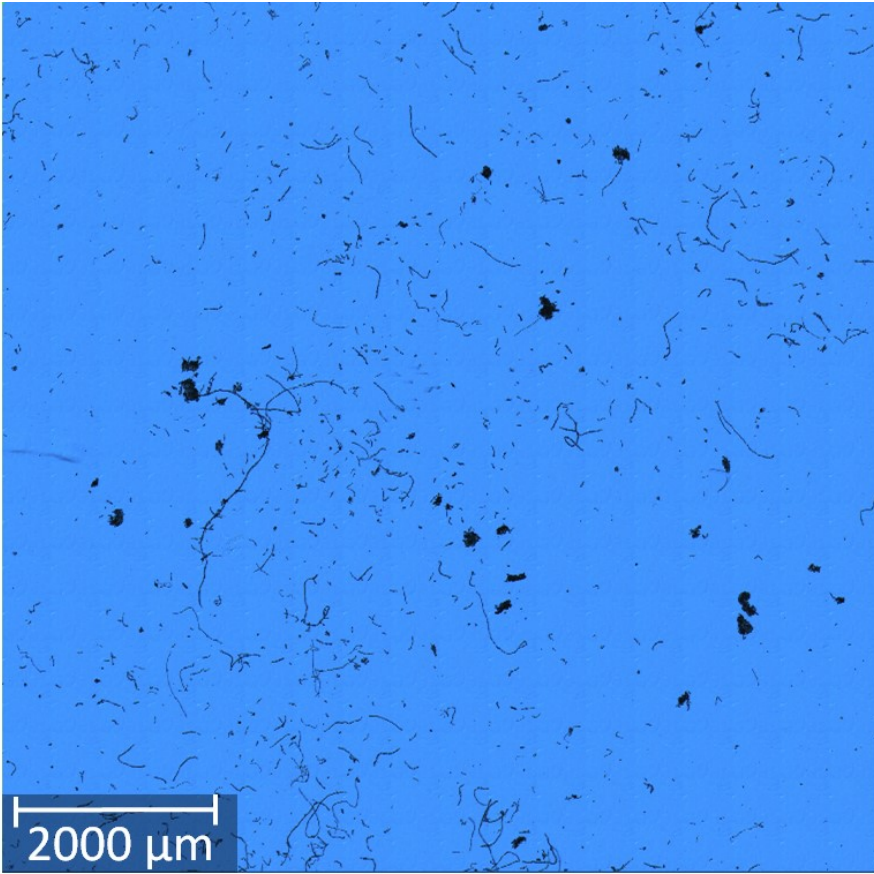


Figure S13 Details of transmitted microscopy mosaic for Product 13 (P13)

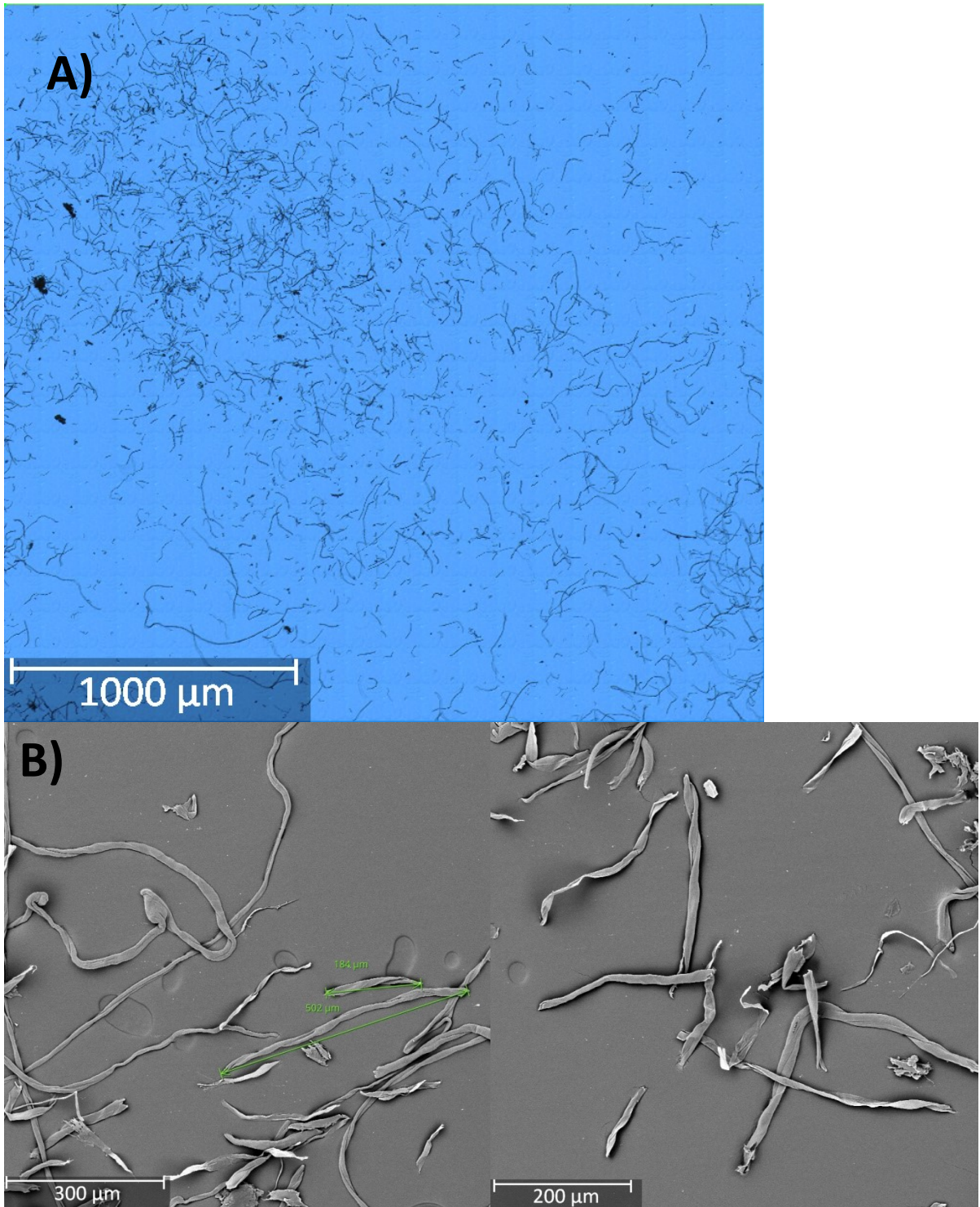


Figure S14 Details of the match analysis Product 14 (P14), A) transmitted microscopy mosaic and B) FEG-SEM

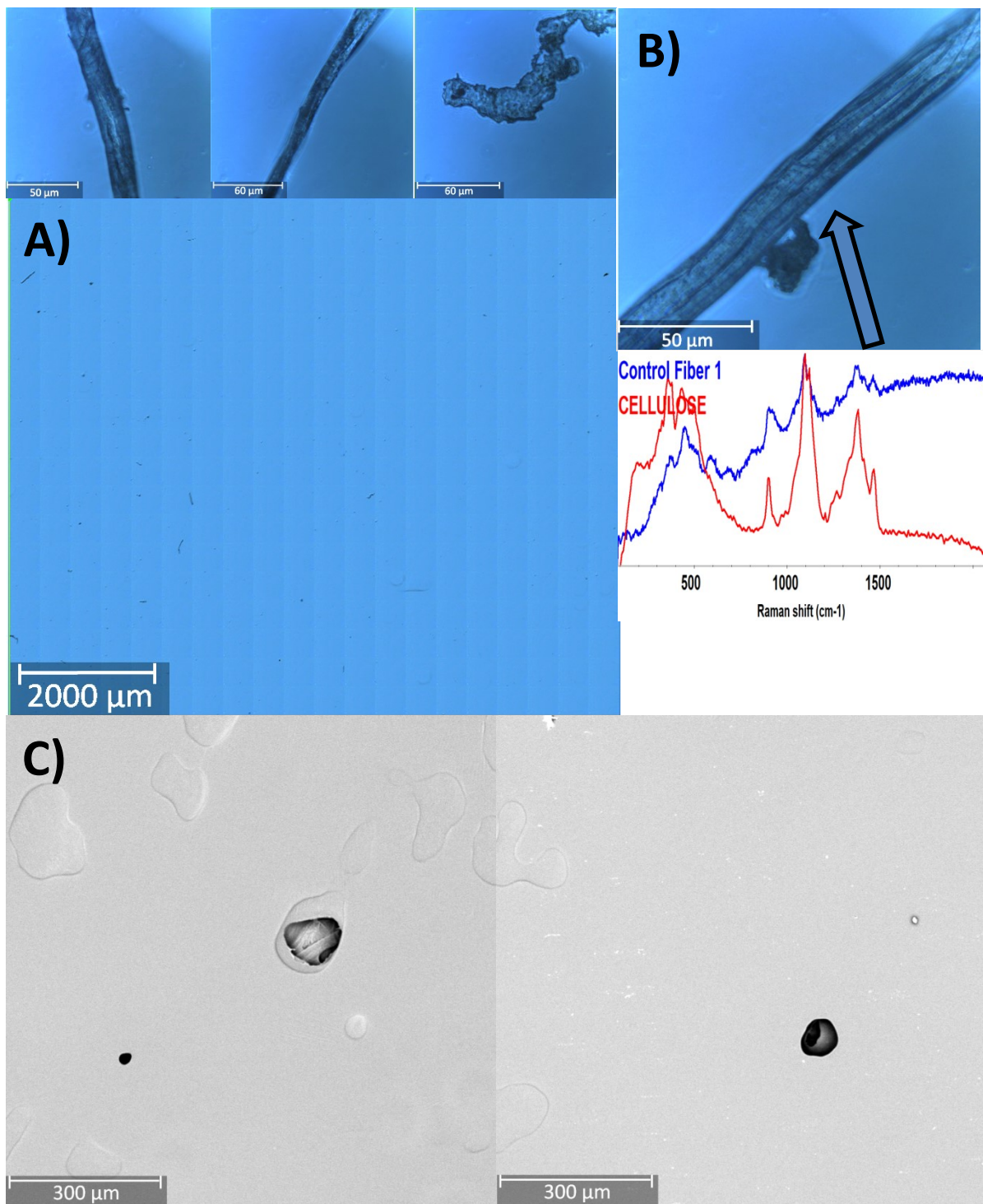


Figure S15 Details of the match analysis Control, no product, A) transmitted microscopy mosaic, B) confocal Raman match and C) FEG-SEM

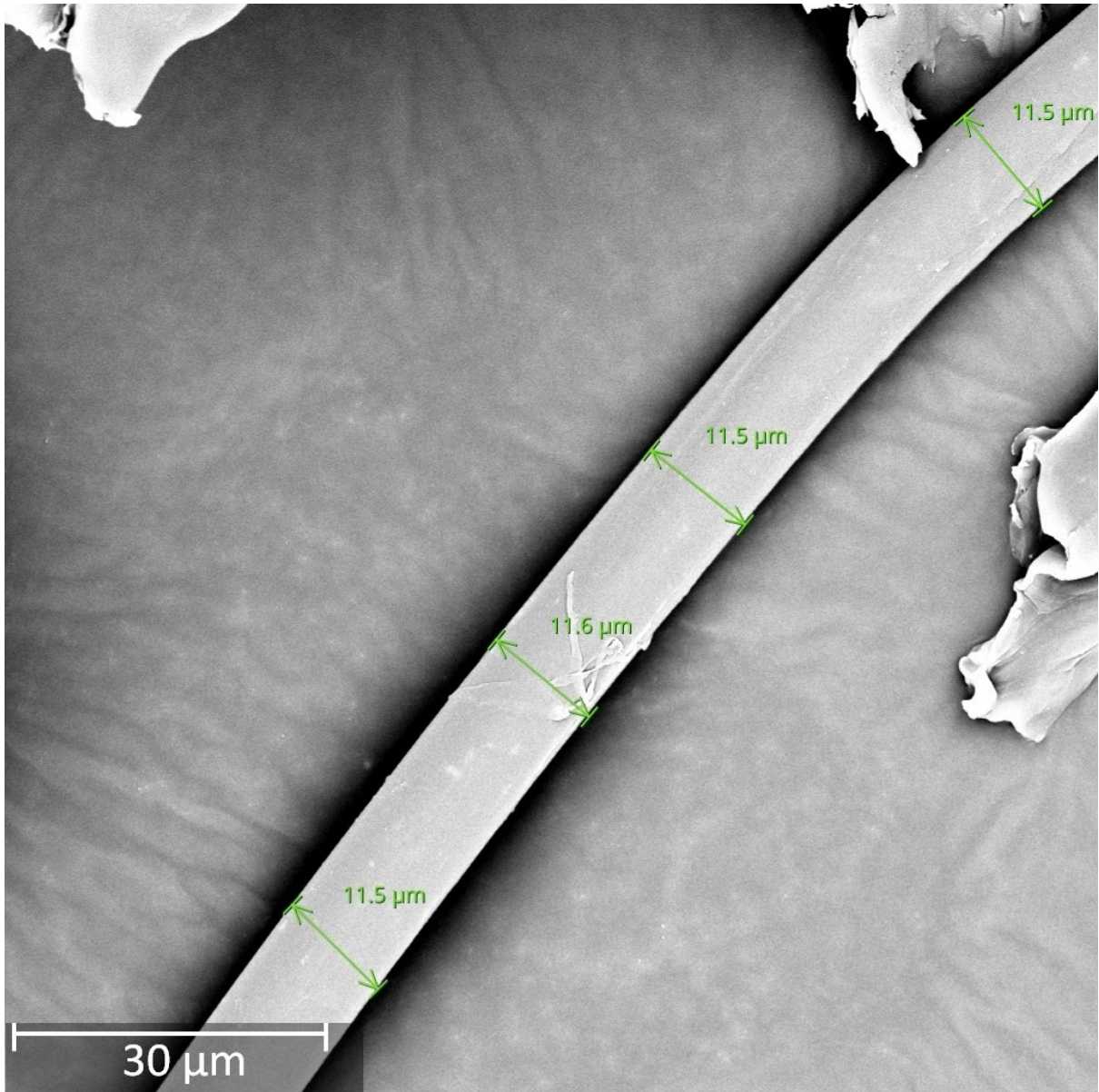


Figure S16 Details of the synthetic fibre diameter product 1 (P1)

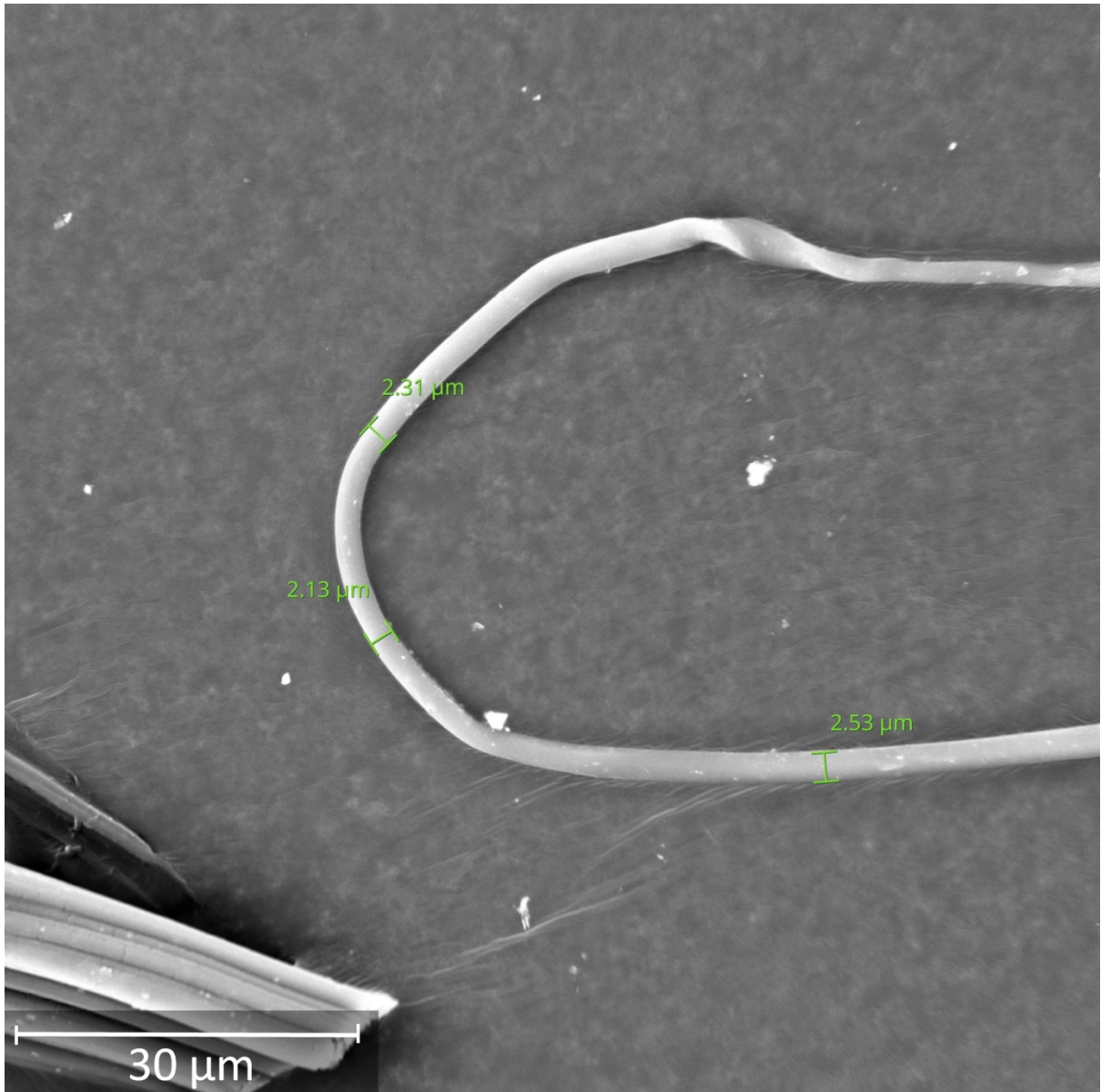


Figure S17 Details of the synthetic fibre diameter product 10 (P10)

Table S1 Two Sample Poisson rate detailed comparisons

	p-value	Z-value	sample rate difference
Control pH4 vs pH7	<1.0E-17	-406.04	-13427.7
C pH4 vs P10	<1.0E-17	1331.3	30865
C pH4 vs P12	<1.0E-17	1028.84	21499.8
C pH4 vs P11	<1.0E-17	1232.43	27063.5
C pH4 vs P3	<1.0E-17	1559.53	32514.1
C pH4 vs P6	<1.0E-17	1114.43	23689.5
C pH4 vs P23	<1.0E-17	-360.5	-11243.2
C pH4 vs P7	<1.0E-17	886.52	24668.4
C pH4 vs P1	<1.0E-17	2263.75	47339.9