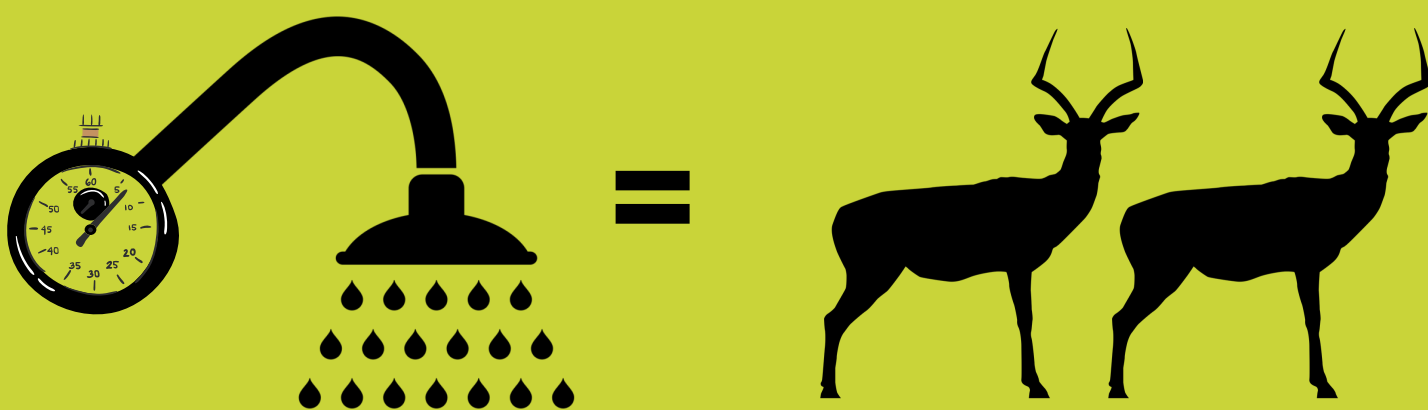
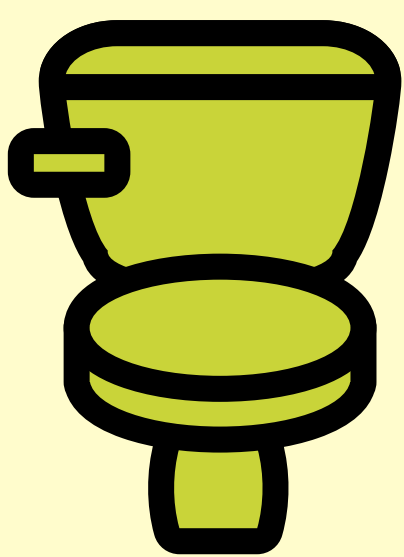


USE WATER MEASUREDLY

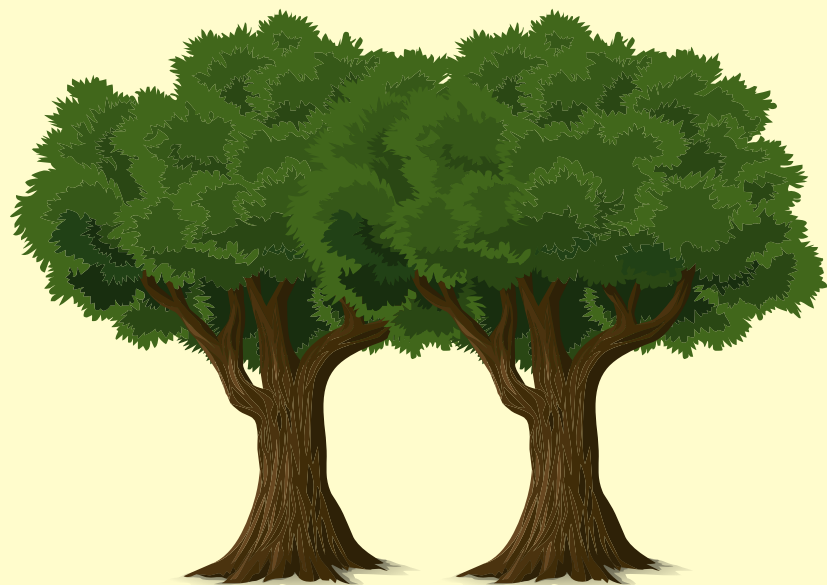


1 MINUTE SHOWER = 8 LITRES WATER

For every minute you shower shorter, you save enough water for 2 impalas for a day



=

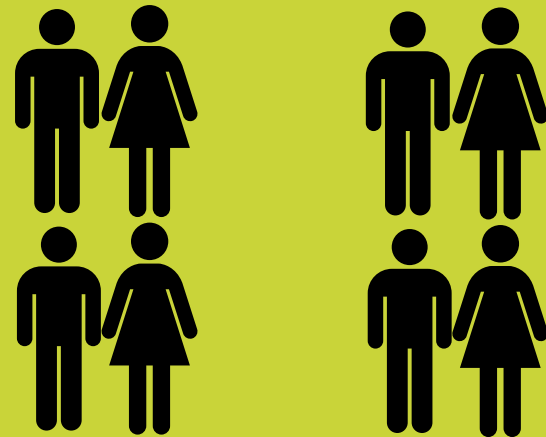


1 TOILET FLUSH = 10 LITRES WATER

Every toilet flush equates to water for 2 average knobthorn trees per day - only flush when necessary



=



FILLED SINK = 16 LITRES WATER

Fill half a sink and wash many items together rather than few at a time, saving up to 8 litres of drinking water for people dependent on the river

**USE WATER TO SHOW YOU CARE
FOR THOSE WITH WHOM YOU SHARE**

