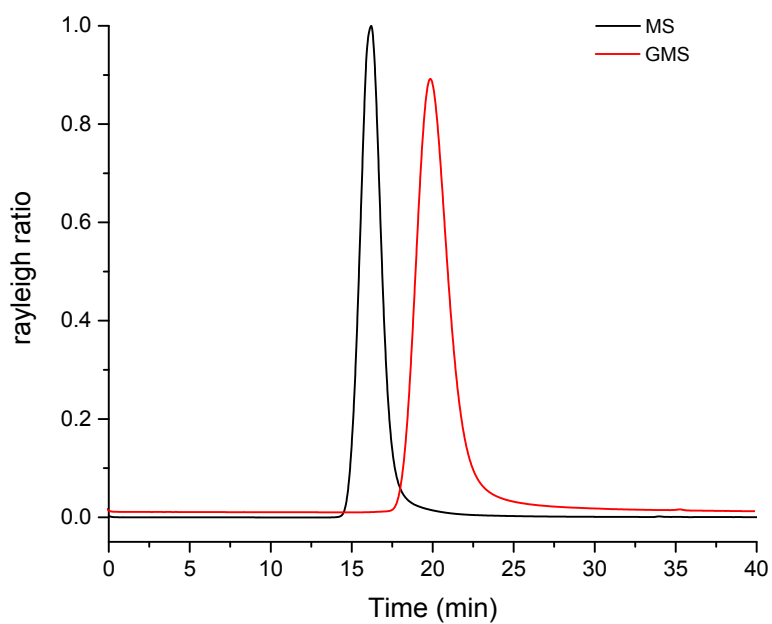
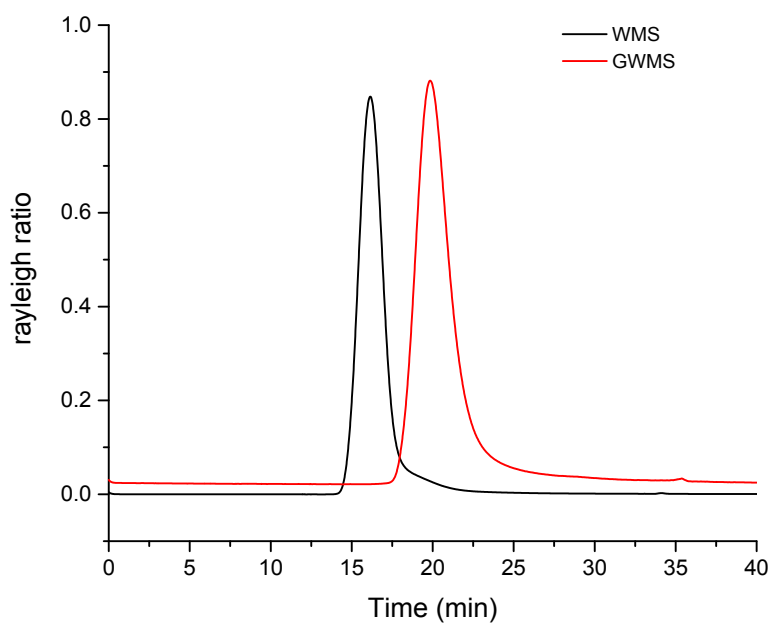


Figure S1 HPSEC profiles of (A) MS and GMS, (B) WMS and GWMS, (C) HMS and GHMS.

A



B



C

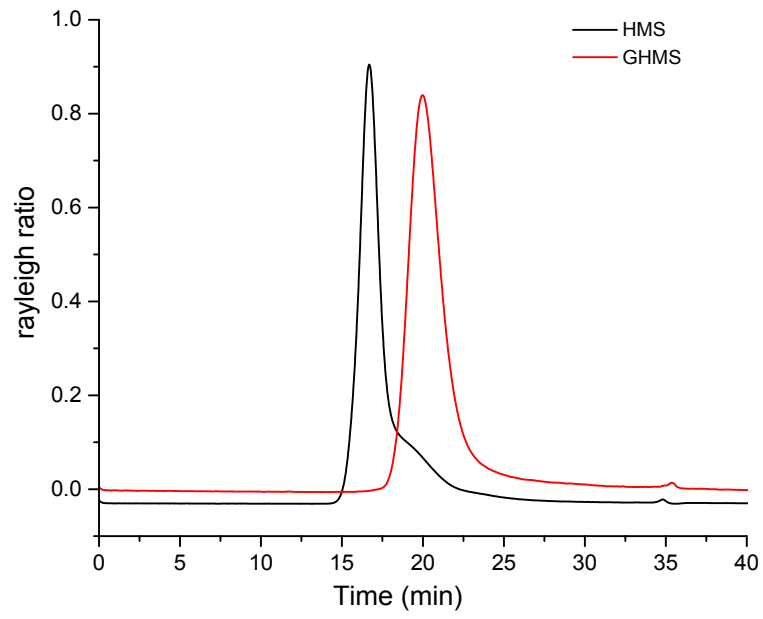
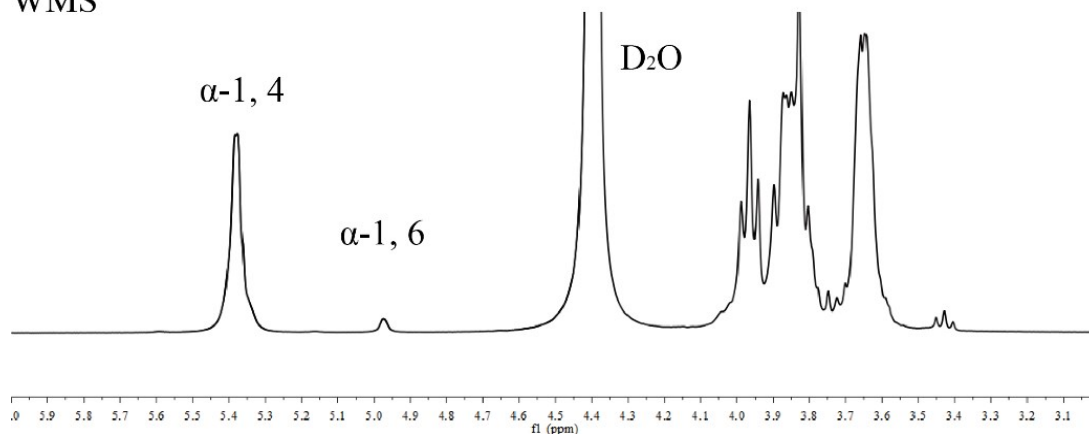


Figure S2 ^1H NMR spectra of native and GTase-treated starches.

WMS



GWMS

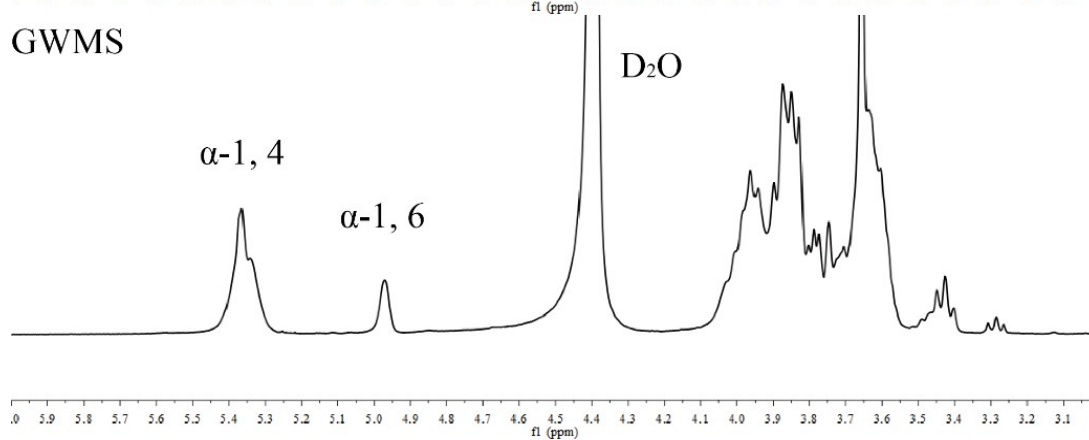
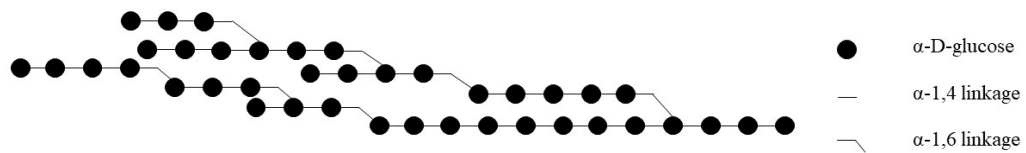
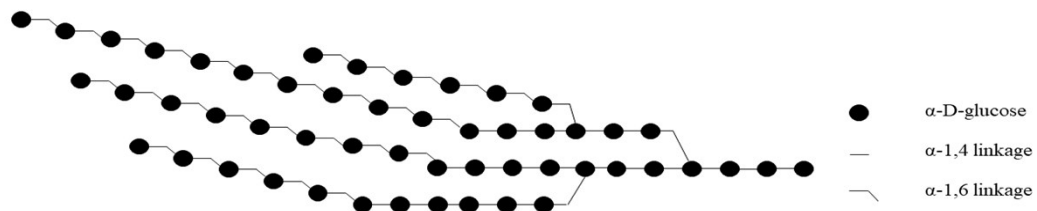


Figure S3. Schematic of structure for *A. chroococcum* NCIMB 8003 GTase-treated starches (A), *L. reuteri* 121 4,6- α -GTase-treated starches (B) and glycosidic chain-converting mechanism by *A. chroococcum* NCIMB 8003 GTase (C).

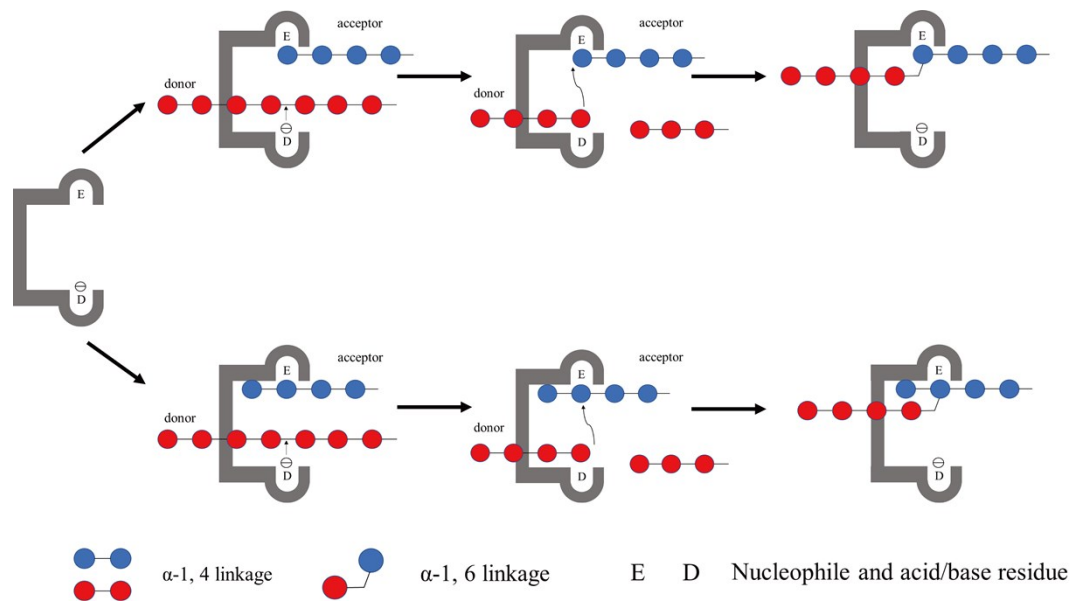
A



B



C



* D is the nucleophile, E is the acid/base residue.