

Fig. S1 Chromatogram of the free amino acids from ME

Table S1 The composition of amino acids in ME

No.	Amino acids	Ret. Time (min)	Peak Area (mAU*S)	Contents (Peak Area $\times 10^{-1}$)	Contents (mg/g)
1	Asp	3.123	267.597	3.486	1.866×10^{-1}
2	Glu	3.377	133.185	4.081	1.087×10^{-1}
3	Ser	6.403	3.658	2.706	1.980×10^{-3}
4	His	7.342	82.776	5.315	8.799×10^{-2}
5	Gly	8.303	51.938	1.955	2.031×10^{-2}
6	Thr	8.614	267.514	3.230	1.728×10^{-1}
7	Arg	9.943	3420.104	4.611	3.154
8	Ala	10.820	144.076	2.256	6.500×10^{-2}
9	Tau	11.503	466.864	3.310	3.090×10^{-1}
10	Tyr	13.076	26.769	5.064	2.711×10^{-2}
11	Cys	16.360	6.677	4.948	6.608×10^{-4}
12	Val	17.056	34.216	3.037	1.909×10^{-1}
13	Met	17.50	11.686	3.760	8.788×10^{-3}
14	Trp	19.216	19.450	6.350	2.470×10^{-2}
15	Phe	20.175	36.052	4.441	3.202×10^{-2}
16	Ile	20.552	46.827	3.363	3.150×10^{-2}
17	Leu	21.916	53.758	3.335	3.585×10^{-2}
18	Lys	22.752	211.235	2.224	9.384×10^{-2}
19	Pro	29.295	8255.328	2.010	3.319

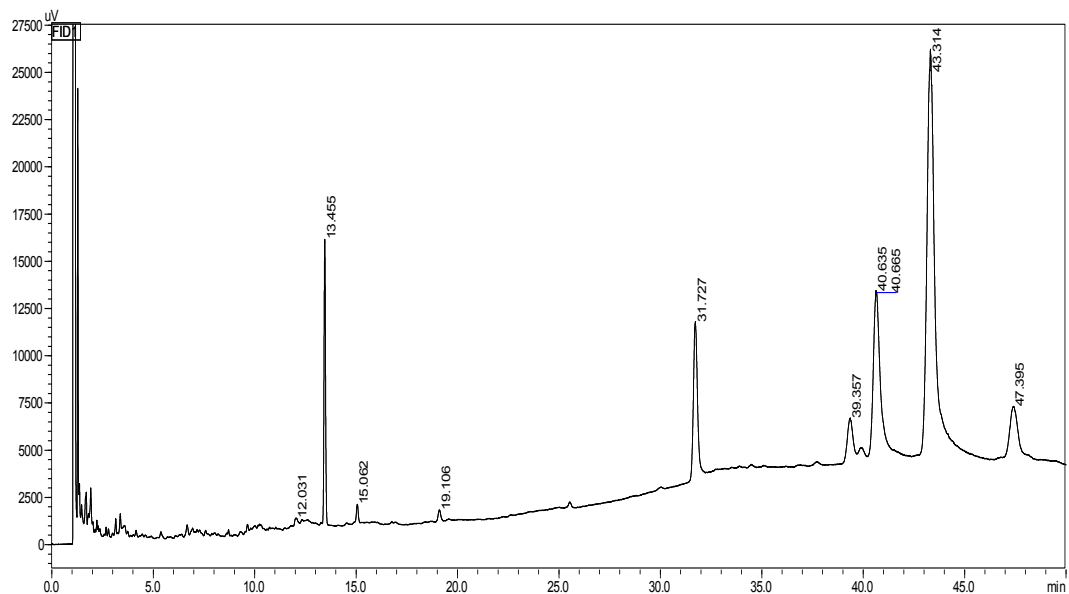


Fig S2 Gas chromatogram analysis of free fatty acid composition

Table S2 The composition of fatty acids in ME

No.	Fatty acid	Ret. Time (min)	Peak Area	Height	Content ($\mu\text{g/mL}$)
1	C14:0	12.03	3496	366	4.19
2	C16:0	15.06	5849	947	7.01
3	C18:0	19.11	5331	603	6.39
4	C22:0	31.73	110500	8187	132.59
5	C22:1	39.36	37637	2126	45.16
6	C24:0	40.64	87130	8633	104.55
7	C20:5n3	40.67	109138	8528	130.96
8	C24:1	43.31	548865	21261	658.65
9	C22:6n3	47.40	66679	2604	80.02