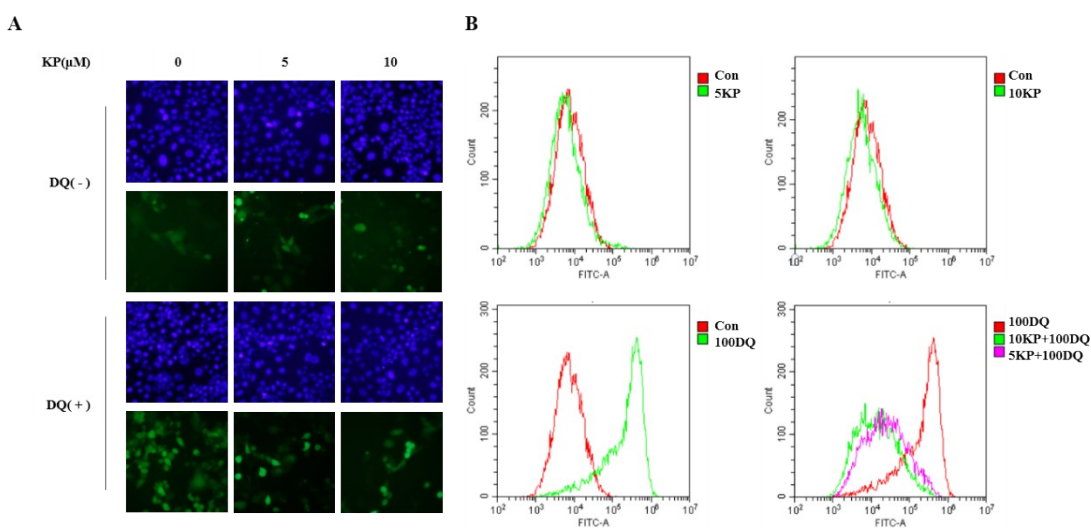


Supplemental Fig.1 Kaempferol attenuated diquat-induced apoptosis in IPEC-1 cells. (A) Apoptosis was determined and (B) analyzed as described.



Supplemental Fig.2 Kaempferol blocked diquat-induced ROS generation in IPEC-1 cells. (A) The images were taken under a fluorescence microscope (magnification 400 ×) (B) ROS content was determined by the DCFH-DA assay, and DCFH-DA positive populations were determined by the flow cytometry analysis.