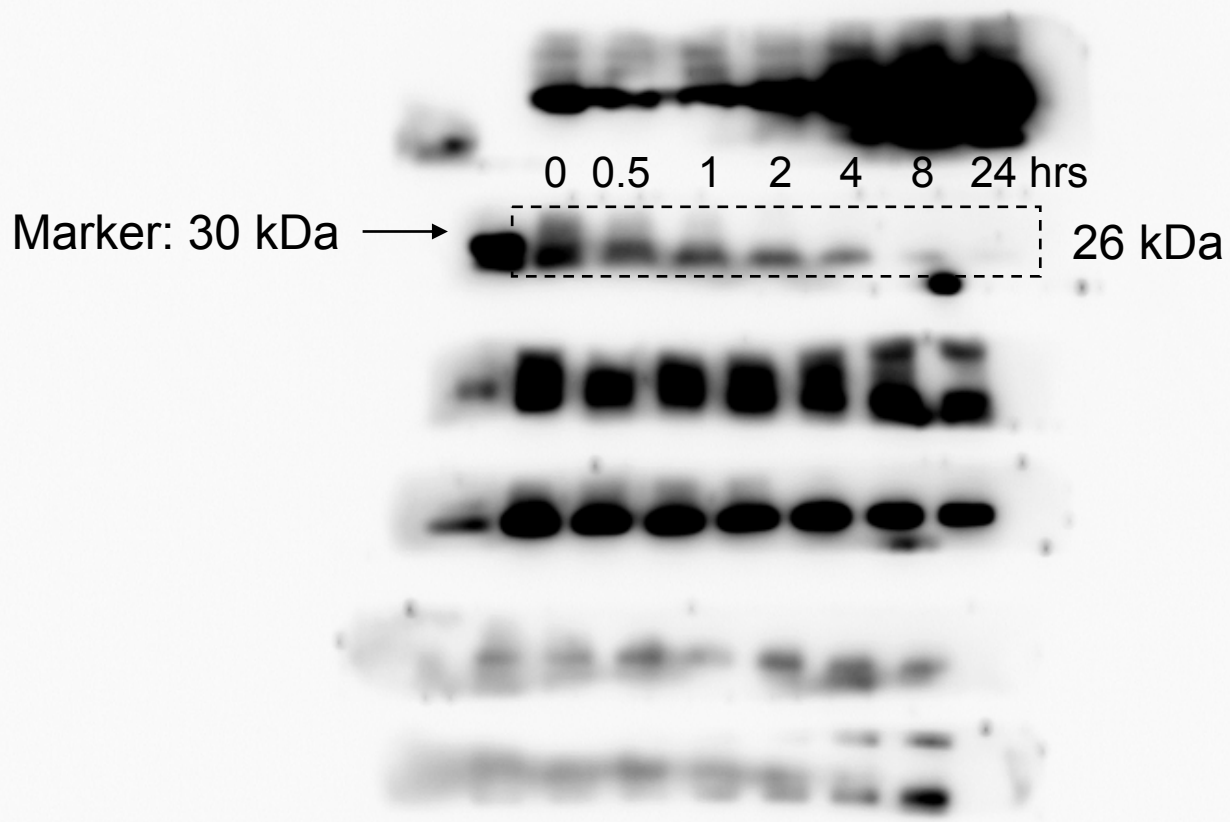
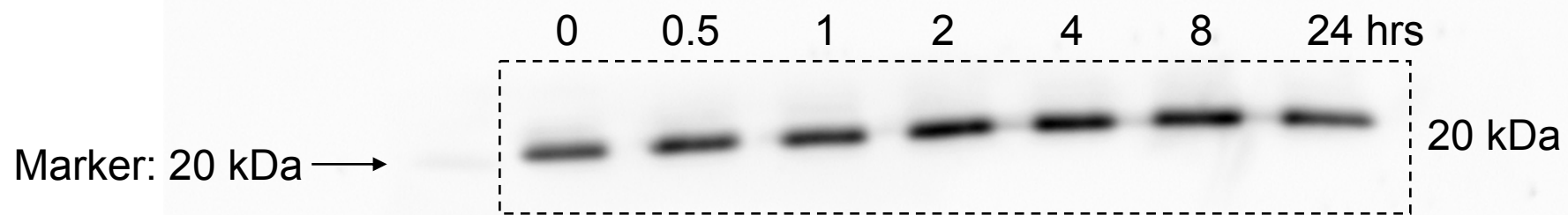


### Bcl-2 (Cell signaling 4223)



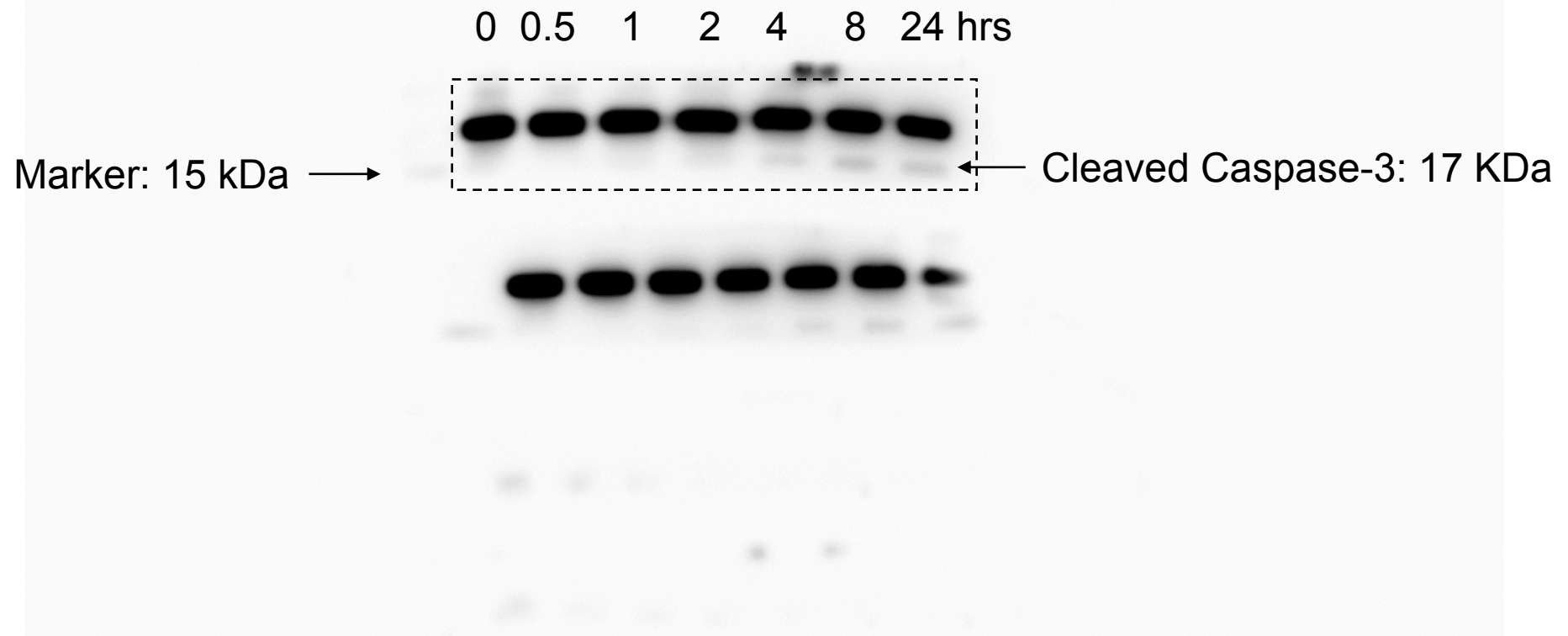
**Fig. 3I**

**Bax (Cell signaling 5023)**



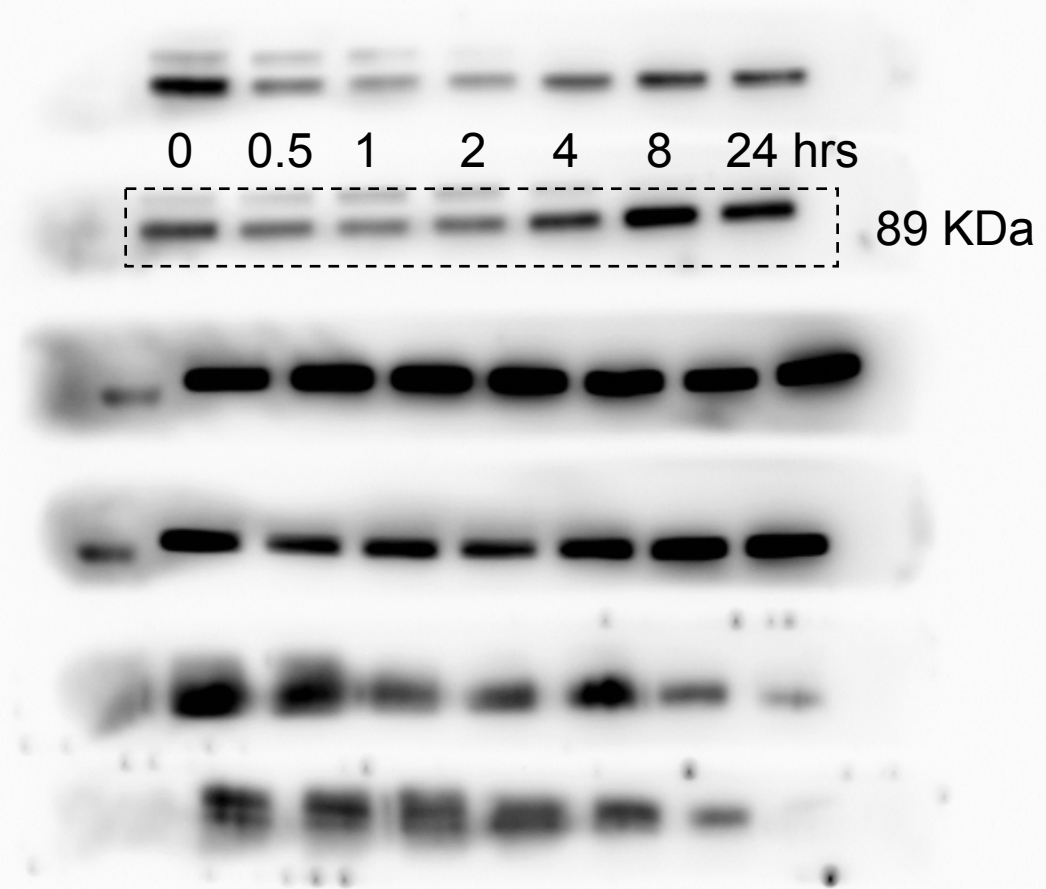
**Fig. 3I**

**Caspase-3 (Cell signaling 9662)**



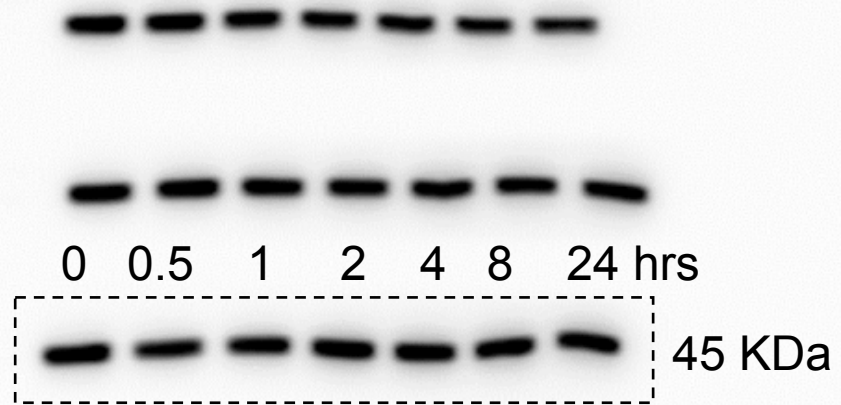
**Fig. 3I**

**Cleaved PARP (Cell signaling 9541)**



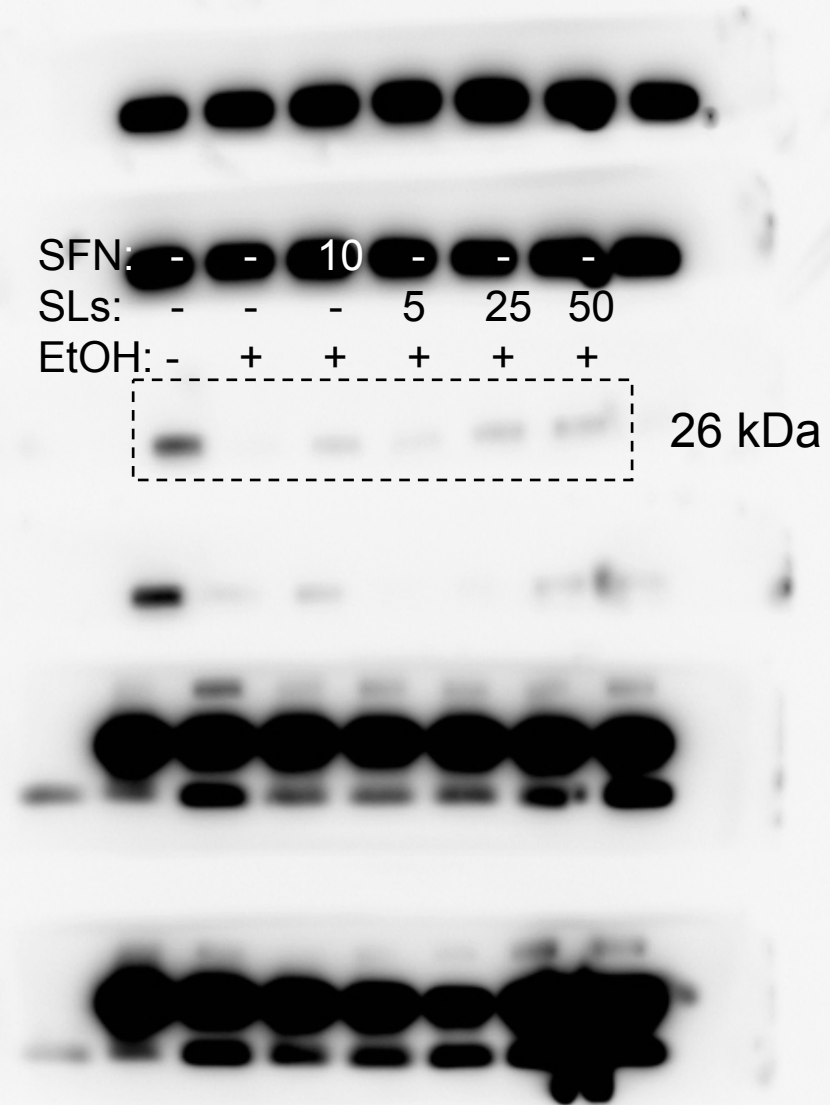
**Fig. 3I**

**$\beta$ -actin (Cell signaling 3700)**



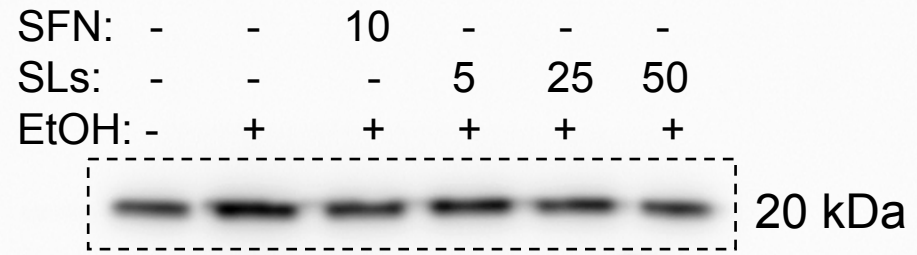
**Fig. 3L**

**Bcl-2 (Cell signaling 4223)**



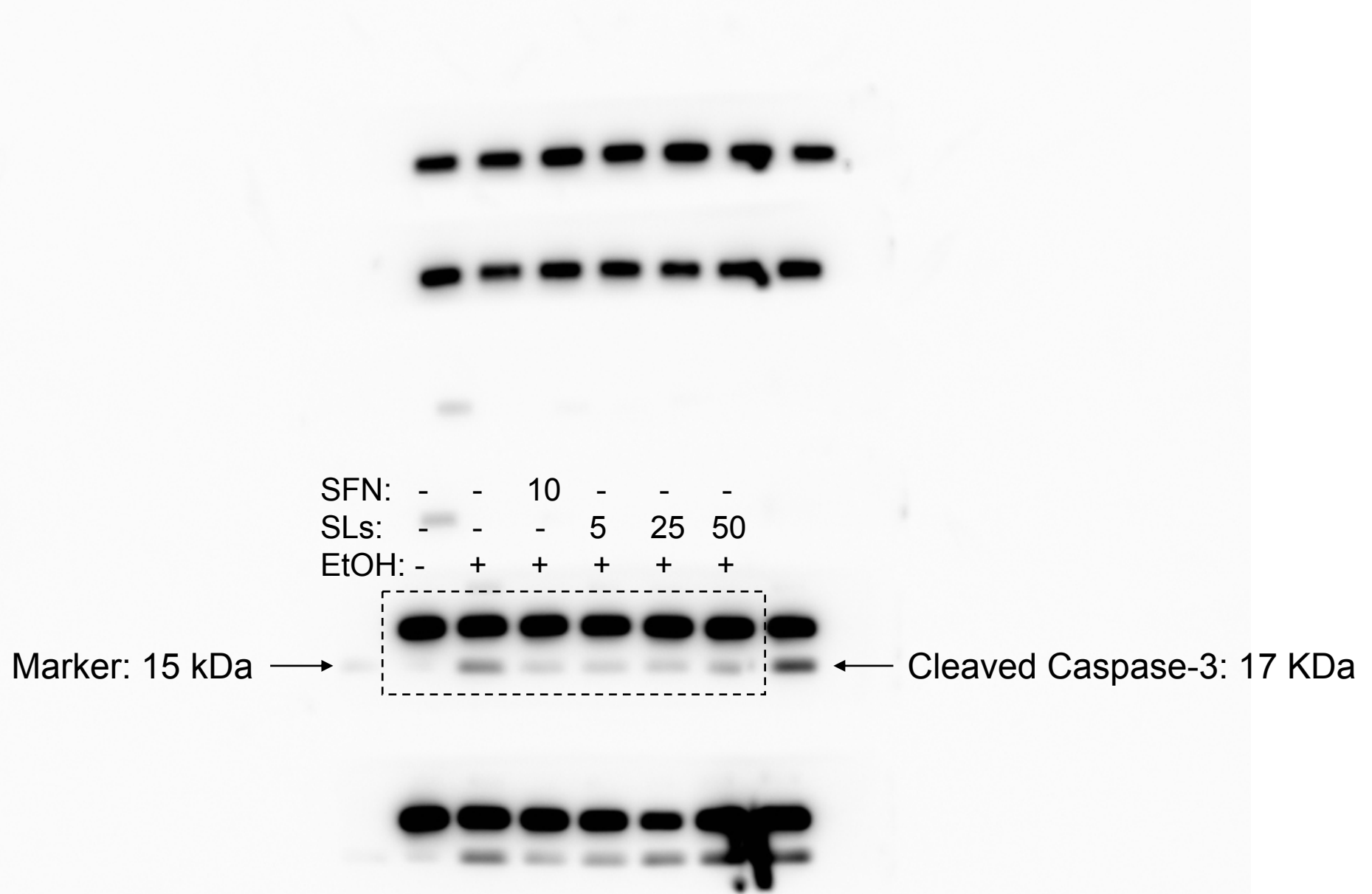
**Fig. 3L**

**Bax (Cell signaling 5023)**



**Fig. 3L**

**Caspase-3 (Cell signaling 9662)**

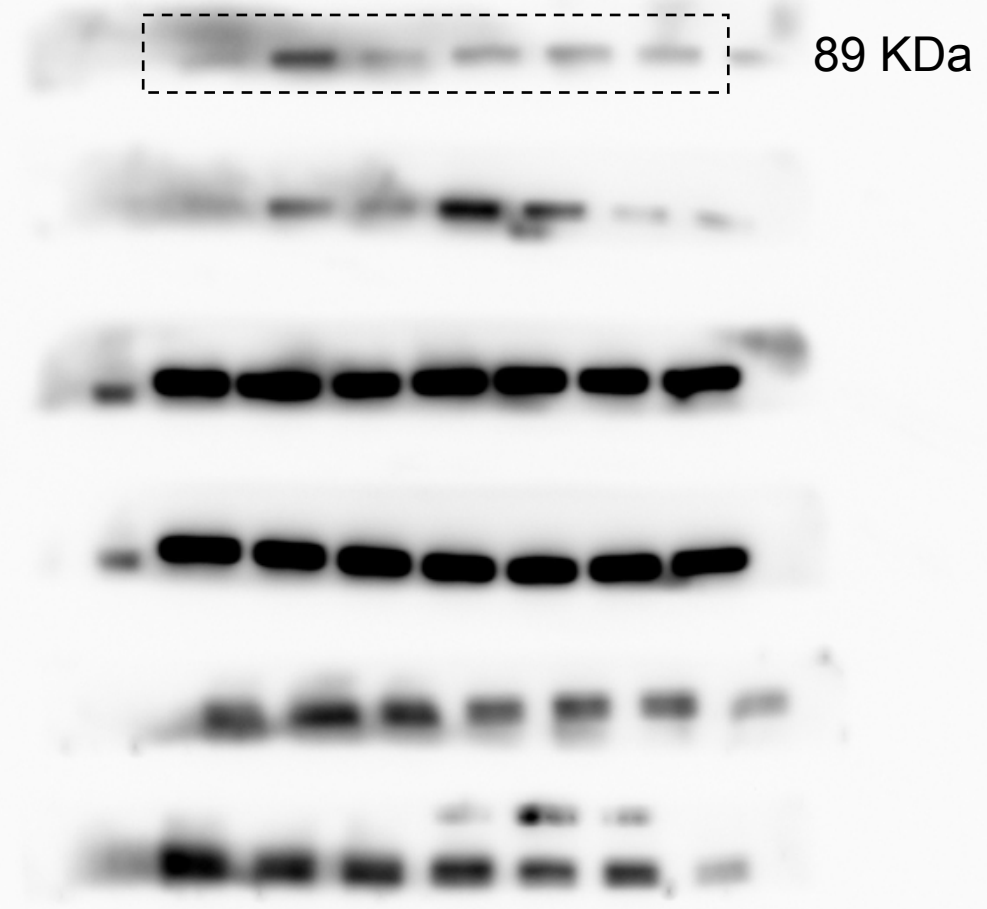




**Fig. 3L**

**Cleaved PARP (Cell signaling 9541)**

SFN:	-	-	10	-	-	-
SLs:	-	-	-	5	25	50
EtOH:	-	+	+	+	+	+



**Fig. 3L**

**$\beta$ -actin (Cell signaling 3700)**

