

Table S1.

The nutrients of low-fat feed and high-fat feed.

Product	D12450B		D12451	
	g%	kcal%	g%	kcal%
Protein	19	20	24	20
Carbohydrate	67	70	41	35
Fat	4	10	24	45
Total kcal/gm	3.8	100	4.7	100
Ingredient	g	kcal	g	kcal
Casein,80 Mesh	200	800	200	800
L-Cystine	3	12	3	12
Corn Starch	315	1260	72.8	291
Maltodextrin 10	35	140	100	400
Sucrose	350	1400	172.8	691
Cellulose, BW200	50	0	50	0
Soybean Oil	25	225	25	225
Lard	20	180	177.5	1598
Mineral Mix S10026	10	0	10	0
DiCalcium Phosphate	13	0	13	0
Calcium Carbonate	5.5	0	5.5	0
Potassium Citrate,1H ₂ O	16.5	0	16.5	0
Vitamin Mix V10001	10	40	10	40
Choline Bitartrate	2	0	2	0
FD&C Yellow Dye #5	0.05	0	0	0
FD&C Red Dye #40	0	0	0.05	0
FD&C Blue Dye #1	0	0	0	0
Total	1055.05	4057	858.15	4057

Table S2.

Oligonucleotides used in the quantitative real-time PCR analysis

Table 2-7 Primer sequence		
target genes		sequences
β -action	forward	5'-CATCCGTAAAGACCTCTATGCCAAC-3'
	reverse	5'-ATGGAGCCACCGATCCACA-3'
C/EBP α	forward	5'-ACCGGGTTTCGGGACTTGA-3'
	reverse	5'-CCCGCAGGAACATCTTTAAGTGA-3'
PPAR γ	forward	5'-AGACCACTCGCATTCTTT-3'
	reverse	5'-CCACAGACTCGGCACTCAAT-3'
ACC	forward	5'-AGTGATGGTGGCCTGCTCTTG-3'
	reverse	5'-AGCAGACGGTGAGCGCATT-3'
SREBP1-c	forward	5'-CCGAGATGTGCGAACTGGA-3'
	reverse	5'-GAAGTCACTGTCTTGGTTGTTGATG-3'
HSL	forward	5'-TCCTGGAACTAAGTGGACGCAAG-3'
	reverse	5'-CAGACACACTCCTGCGCATAGAC-3'
FAS	forward	5'-TGCTGTTGGAAGTCAGCTATGAA-3'
	reverse	5'-GATGCCTCTGAACCACTCACAC-3'
FABP4	forward	5'-TGGGAACCTGGAAGCTTGTCTC-3'
	reverse	5'-GAATTCCACGCCAGTTTGA-3'
Perilipin	forward	5'-GTCAATGAACAAGGGCCCAAC-3'
	reverse	5'-CACAGGCAGCTGCAGAACTCTC-3'
Adiponectin	forward	5'-TTCTGTCTGTACGATTGTCAGTGGA-3'
	reverse	5'-GGCATGACTGGGCAGGATTA-3'
Leptin	forward	5'-CTATGCCACCTTGGTCACCT-3'
	reverse	5'-ACCAAACCAAGCATTTTTGC-3'
IL-6	forward	5'-GCTACCAAACCTGGATATAATCAGGA-3'
	reverse	5'-CCAGGTAGCTATGGTACTCCAGAA-3'
MCP-1	forward	5'-ATTGGGATCATCTTGCTGGT-3'
	reverse	5'-CCTGCTGTTACAGTTGCC-3'
TLR	forward	5'-TGGCATGGCTTACACCACC-3'
	reverse	5'-GAGGCCAATTTTGTCTCCACA-3'

Table S3. Details for Identified Component.

Peak	Component name	Label	Formula	RT	Observed m/z Adducts	Mass error (mDa)	Response
1	Cyanidin 3-arabinoside	confirm	C ₂₀ H ₁₉ O ₁₀	5.68	419.0969 -e	-0.4	167946
2	Cyanidin-3-O-galactoside	confirm	C ₂₁ H ₂₁ O ₁₁	5.21	449.1074 -e	-0.4	444874
3	Cyanidin-3-O-glucoside	confirm	C ₂₁ H ₂₁ O ₁₁	5.48	449.1074 -e	-0.4	28809

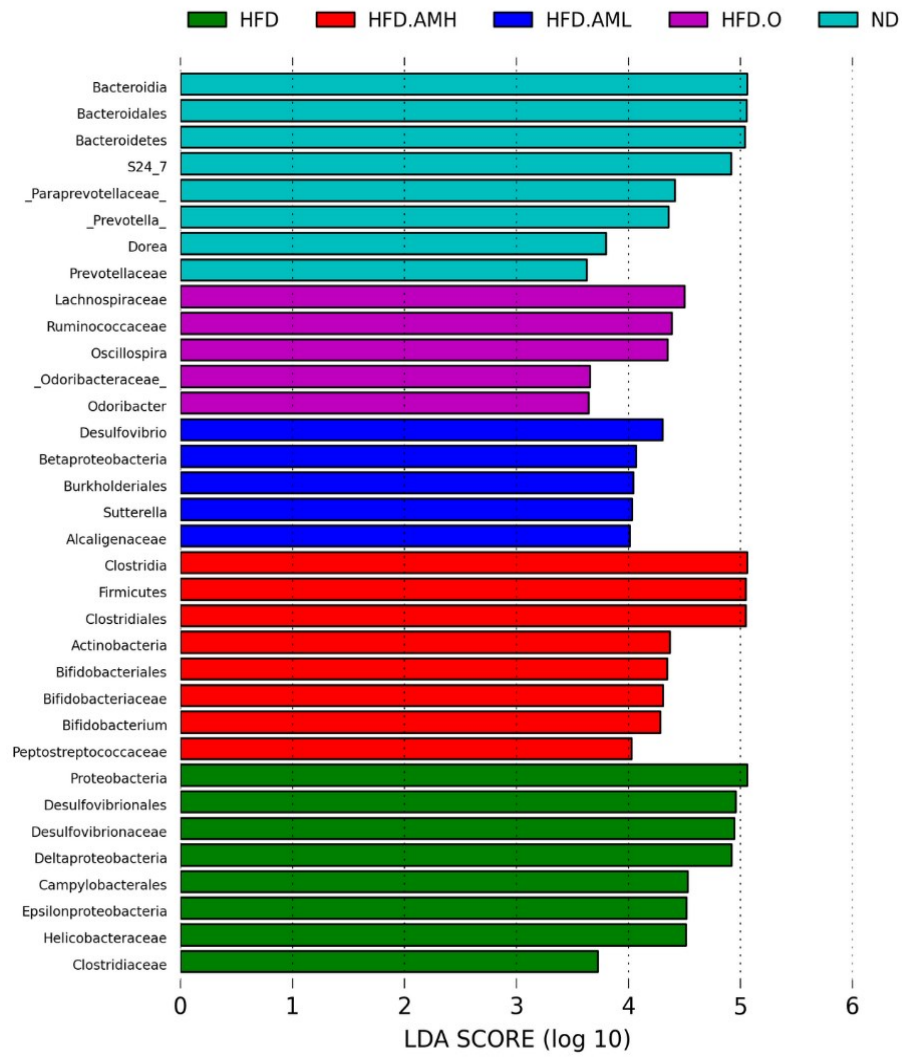


Fig. S1 LDA SCORE.

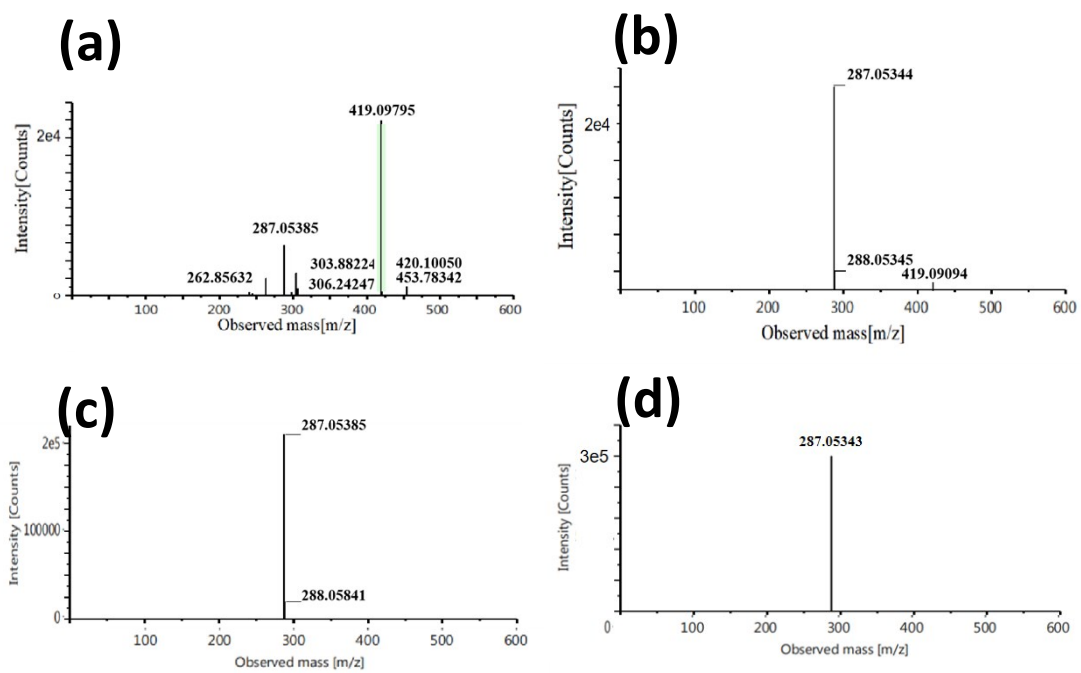


Fig. S2 (a) MS and (b) MS² data of Peak 4; (c) MS and (d) MS² data of Peak 5.

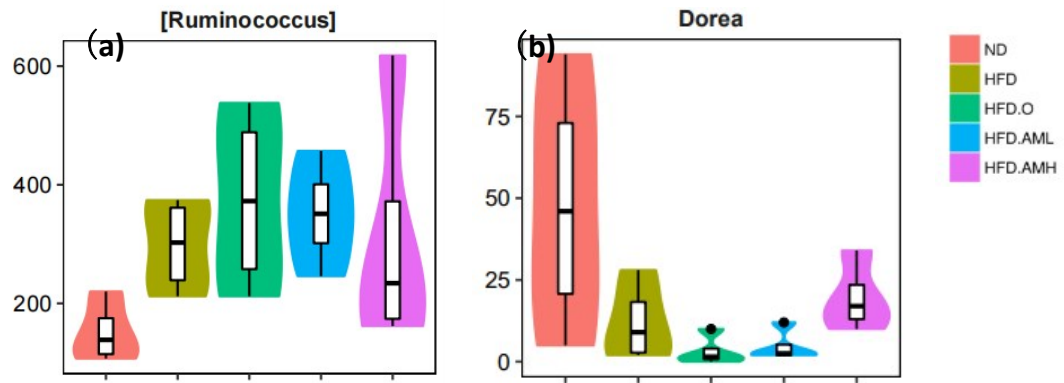


Fig. S3 The relative abundance of distinct taxa in the genus level.