

Raw Data for

Aloe-emodin prevents nerve injury and neuroinflammation caused by ischemic stroke via PI3K/AKT/mTOR and NF- κ B pathway

Minghua Xian^{†1,2,3}, Jiale Cai^{†1,2,3}, Kening Zheng^{1,2,3}, Qu Liu^{1,2,3}, Yali Liu^{1,2,3}, Huiting Lin^{1,2,3}, Shengwang Liang^{*1,2,3}, Shumei Wang^{*2,3,4}

1 School of Traditional Chinese Medicine, Guangdong Pharmaceutical University, Guangzhou 510006, China

2 Key Laboratory of Digital Quality Evaluation of Chinese Materia Medica of State Administration of TCM, Guangzhou 510006, China

3 Engineering & Technology Research Center for Chinese Materia Medica Quality of the Universities of Guangdong Province, Guangzhou 510006, China

4 School of Pharmacy, Guangdong Pharmaceutical University, Guangzhou 510006, China

† These authors contributed equally to this work.

* Correspondence: Shumei Wang, E-mail: gduwsm@126.com, Tel.:020-39352177; Shengwang Liang, E-mail: swliang371@163.com, Tel.:020-39352177

This WORD file includes:

Figures 2, 4, 5, and 6 show the raw data of each protein developed by western blot. The location and group of the corresponding protein are marked in the picture. (n=3 or n=4)

Fig2 A WB:PI3K-1

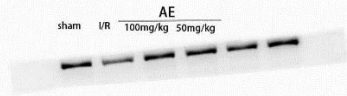


Fig2 A WB:PI3K-2

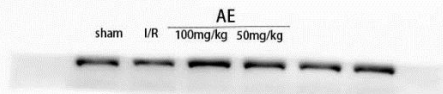


Fig2 A WB:PI3K-3

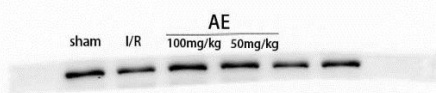


Fig2 A WB:PI3K-4

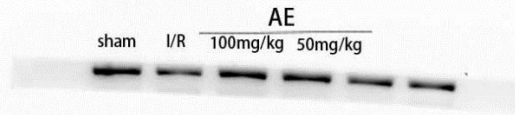


Fig2 B WB:Akt-1

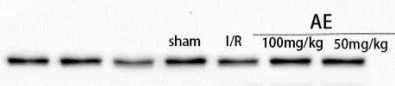


Fig2 B WB:Akt-2

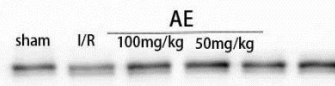


Fig2 B WB:Akt-3

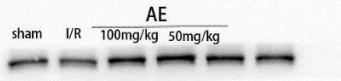


Fig2 B WB:Akt-4

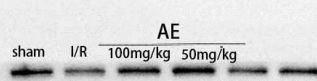


Fig2 C WB:p-Akt-1

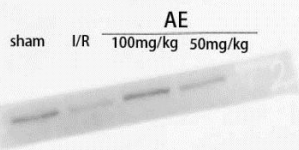


Fig2 C WB:pAkt-2

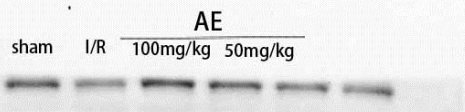


Fig2 C WB:pAkt-3

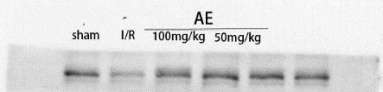
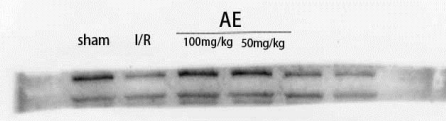
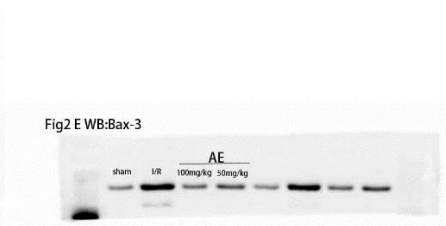
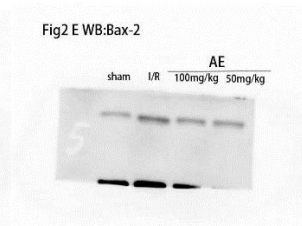
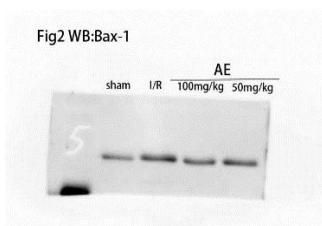
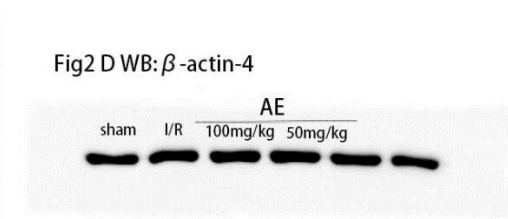
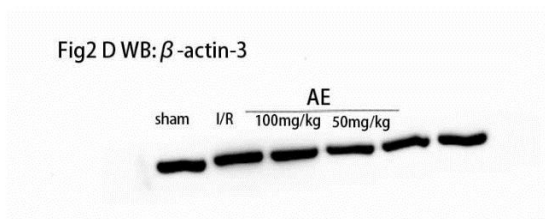
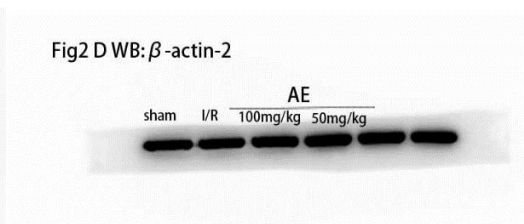
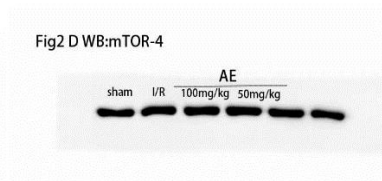
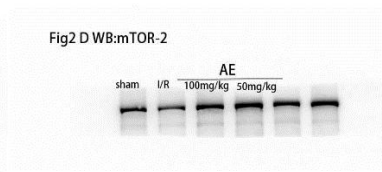
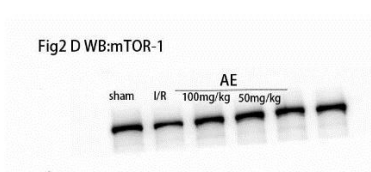
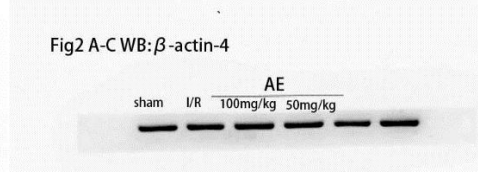
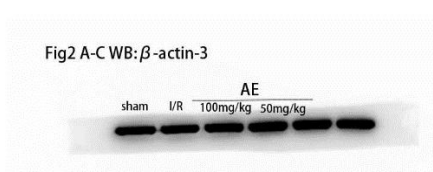
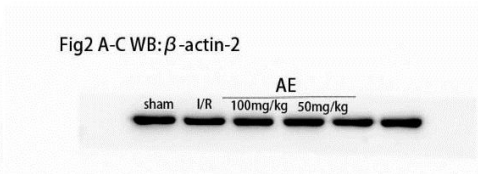
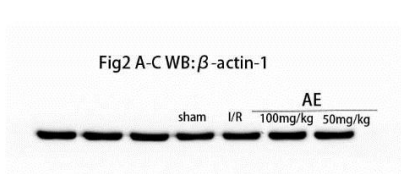


Fig2 C WB:pAkt-4





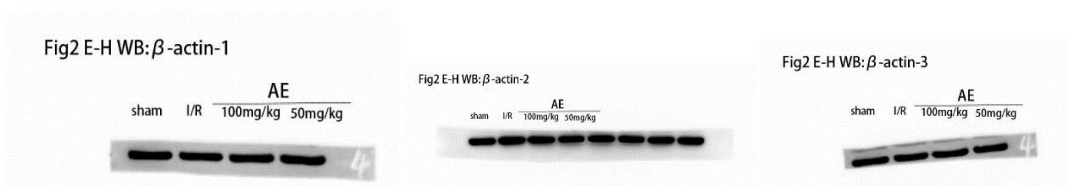
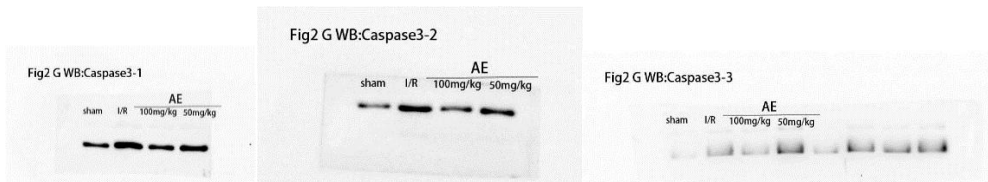
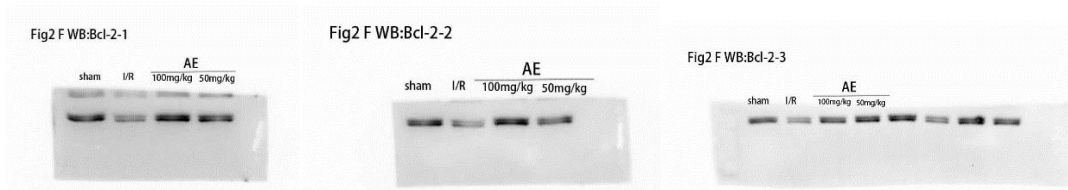


Fig4 C WB:Akt-1

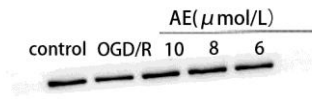


Fig4 C WB:Akt-2

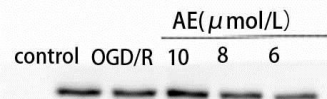


Fig4 C WB:Akt-3

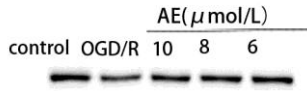


Fig4 C WB:Akt-4

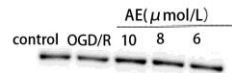


Fig4 D WB:p-Akt-1

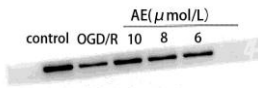


Fig4 D WB:p-Akt-2

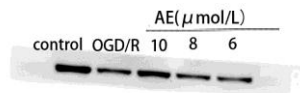


Fig4 D WB:p-Akt-3

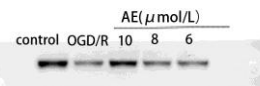


Fig4 C-D WB:β-actin-1

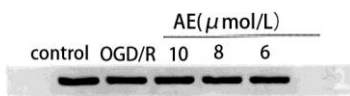


Fig4 C-D WB:β-actin-2

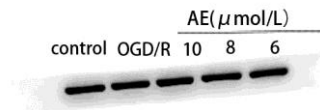


Fig4 C-D WB:β-actin-3

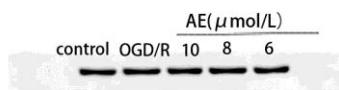


Fig4 C-D WB:β-actin-4

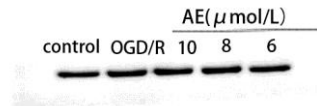


Fig4 E WB:mTOR-1

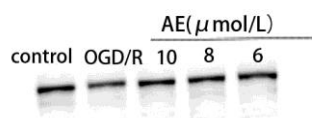


Fig4 E WB:mTOR-2

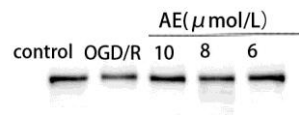


Fig4 E WB:mTOR-3

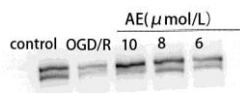


Fig4 E WB:mTOR-4

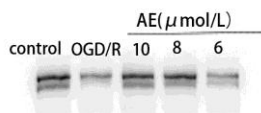


Fig4 F-H WB: β -actin-3

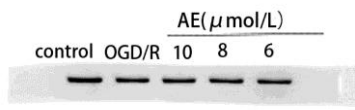


Fig4 F-H WB: β -actin-4

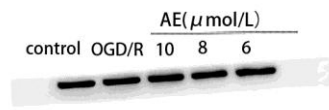


Fig5 B WB:Bax-1

Na ₂ S ₂ O ₄	-	+	+	+	+
Aloe emodin	-	-	+	-	+
MK-2206 2HCl	-	-	-	+	+

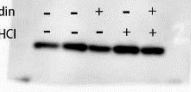


Fig5 B WB:Bax-2

Na ₂ S ₂ O ₄	-	+	+	+	+
Aloe emodin	-	-	+	-	+
MK-2206 2HCl	-	-	-	+	+

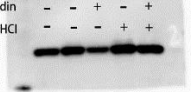


Fig5 B WB:Bax-3

Na ₂ S ₂ O ₄	-	+	+	+	+
Aloe emodin	-	-	+	-	+
MK-2206 2HCl	-	-	-	+	+

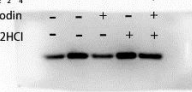


Fig5 C WB:Bcl-2-1

Na ₂ S ₂ O ₄	-	+	+	+	+
Aloe emodin	-	-	+	-	+
MK-2206 2HCl	-	-	-	+	+

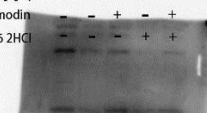


Fig5 C WB:Bcl-2-2

Na ₂ S ₂ O ₄	-	+	+	+	+
Aloe emodin	-	-	+	-	+
MK-2206 2HCl	-	-	-	+	+

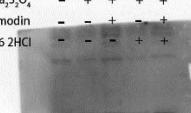


Fig5 C WB:Bcl-2-3

Na ₂ S ₂ O ₄	-	+	+	+	+
Aloe emodin	-	-	+	-	+
MK-2206 2HCl	-	-	-	+	+

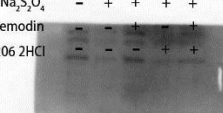


Fig5 B-C WB:β-actin-1

Na ₂ S ₂ O ₄	-	+	+	+	+
Aloe emodin	-	-	+	-	+
MK-2206 2HCl	-	-	-	+	+

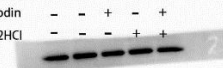


Fig5 B-C WB:β-actin-2

Na ₂ S ₂ O ₄	-	+	+	+	+
Aloe emodin	-	-	+	-	+
MK-2206 2HCl	-	-	-	+	+




Fig5 B-C WB:β-actin-3

Na ₂ S ₂ O ₄	-	+	+	+	+
Aloe emodin	-	-	+	-	+
MK-2206 2HCl	-	-	-	+	+



Fig6 C WB:NF- κ B-1

LPS+AE(μ M)
control LPS 8 6 4 2

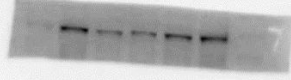


Fig6 C WB:NF- κ B-2

LPS+AE(μ M)
control LPS 8 6 4 2

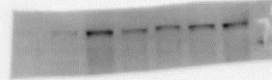


Fig6 C WB:NF- κ B-3

LPS+AE(μ M)
control LPS 8 6 4 2

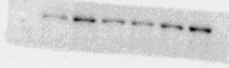


Fig6 C WB:NF- κ B-4

LPS+AE(μ M)
control LPS 8 6 4 2

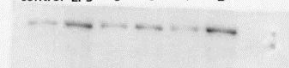


Fig6 C WB:GAPDH-1

LPS+AE(μ M)
control LPS 8 6 4 2

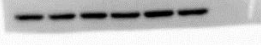


Fig6 C WB:GAPDH-2

LPS+AE(μ M)
control LPS 8 6 4 2

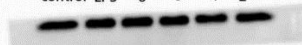


Fig6 C WB:GAPDH-3

LPS+AE(μ M)
control LPS 8 6 4 2

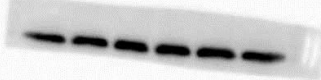


Fig6 C WB:GAPDH-4

LPS+AE(μ M)
control LPS 8 6 4 2



Fig6 D WB:TNF- α -1

LPS+AE(μ M)
control LPS 8 6 4 2

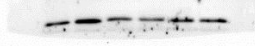


Fig6 D WB:TNF- α -2

LPS+AE(μ M)
control LPS 8 6 4 2



Fig6 D WB:TNF- α -3

LPS+AE(μ M)
control LPS 8 6 4 2

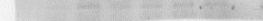


Fig6 D WB: β -actin-1

LPS+AE(μ M)
control LPS 8 6 4 2



Fig6 D WB: β -actin-2

LPS+AE(μ M)
control LPS 8 6 4 2

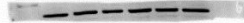


Fig6 D WB: β -actin-3

LPS+AE(μ M)
control LPS 8 6 4 2

