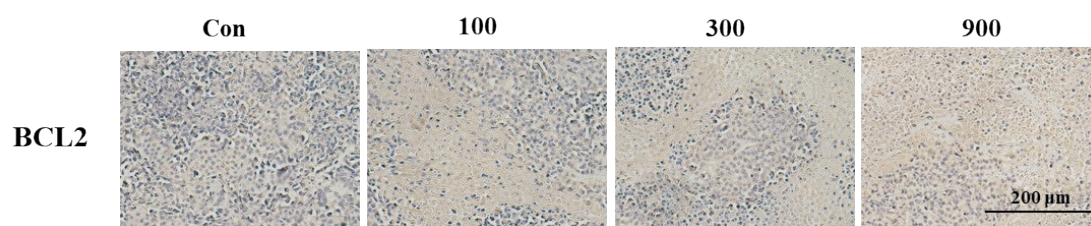


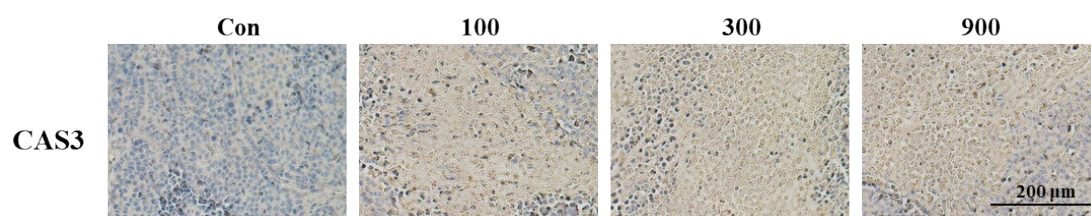
# 1 Supplementary materials

2



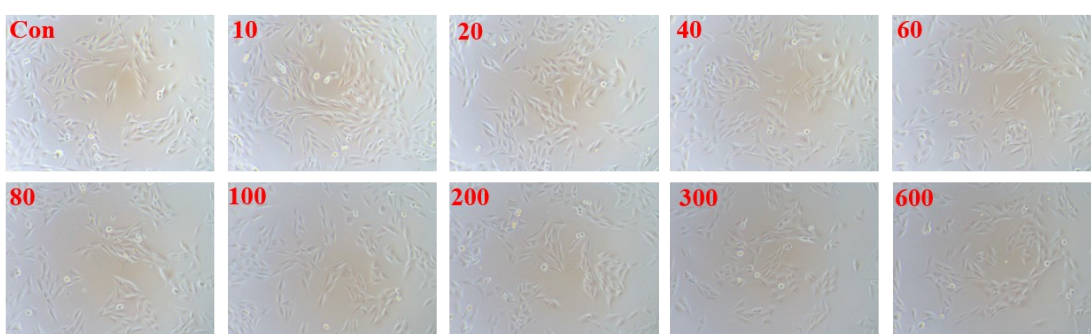
4 **Figure S1.** IHC staining for BCL2 in solid tumors.

5

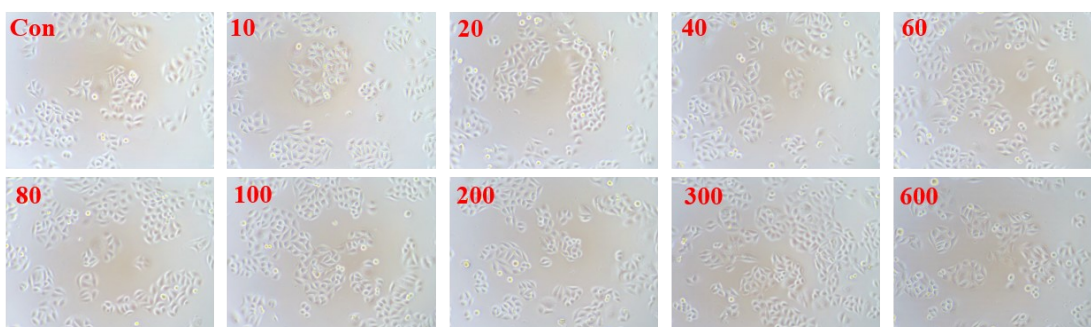


7 **Figure S2.** IHC staining for caspase-3 in solid tumors.

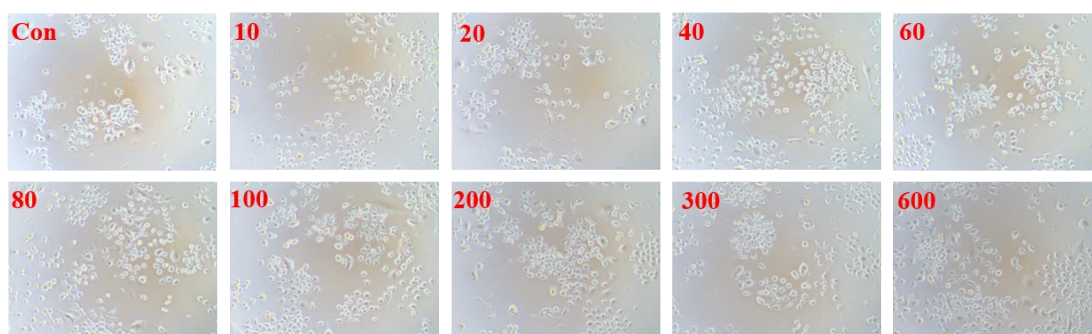
8



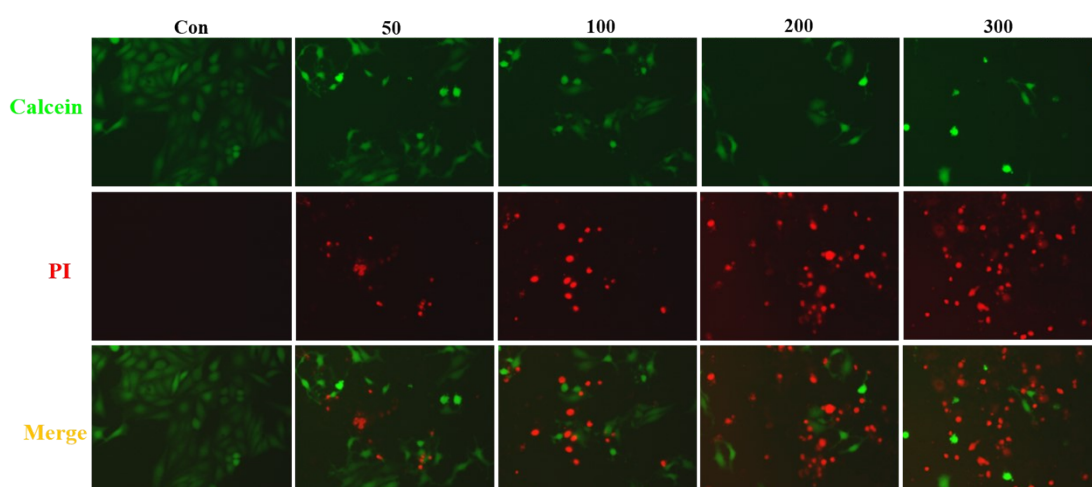
10 **Figure S3.** The cellular morphology of L6 with NA treatments.



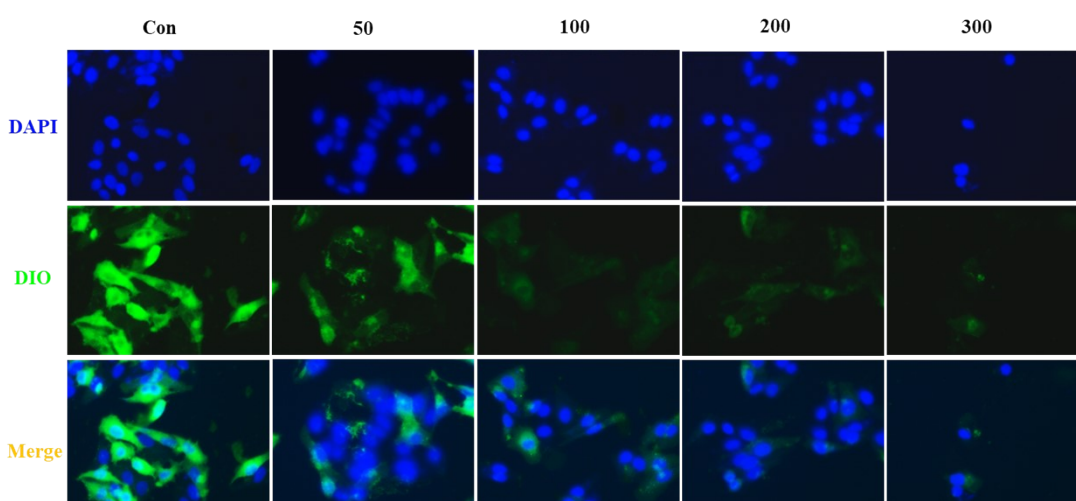
12 **Figure S4.** The cellular morphology of LO2 with NA treatments.



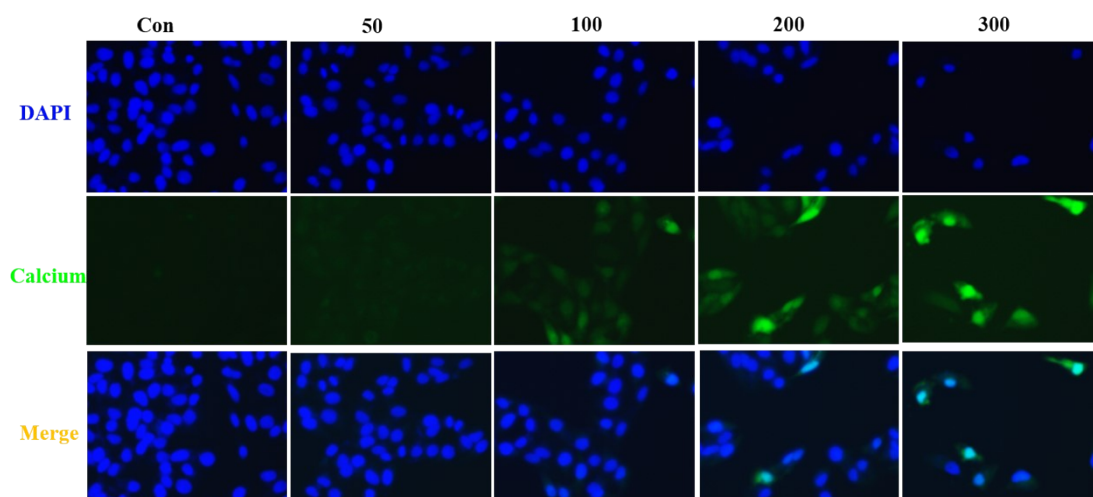
**Figure S5.** The cellular morphology of RAW264.7 with NA treatments.



**Figure S6.** Calcein and PI staining of HepG2 cells.



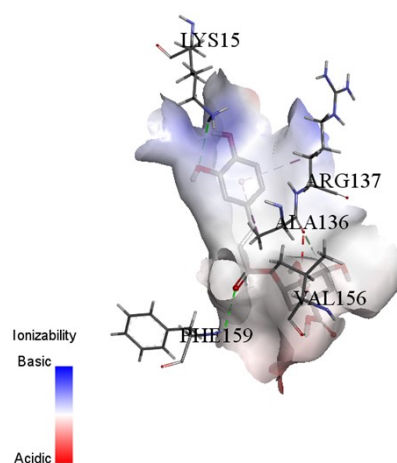
**Figure S7.** DAPI and DIO staining of HepG2 cells.



22

23 **Figure S8.** DAPI and Fluo-4AM staining of HepG2 cells.

24

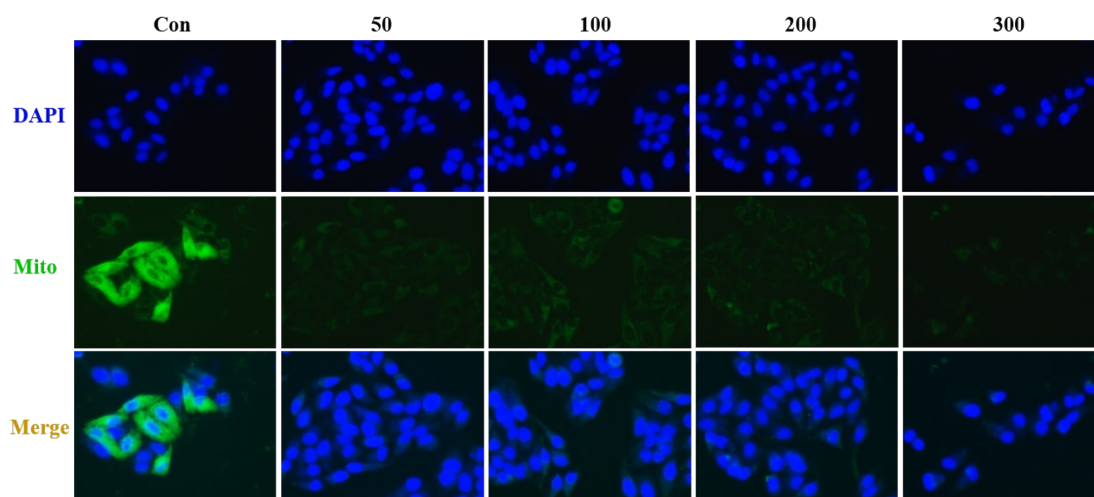


25

26 **Figure S9.** Ionizability interactions between NA and MCU.

27



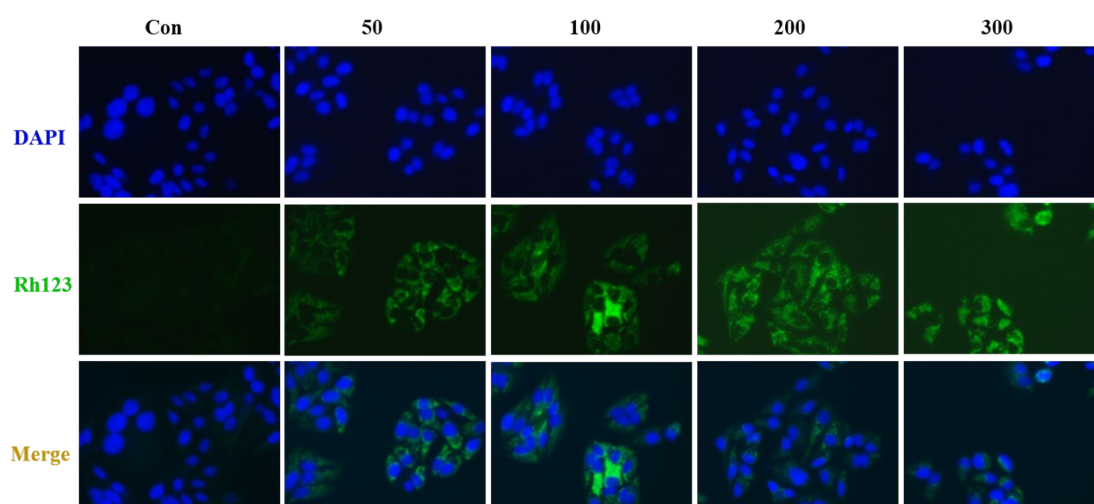


28

29 **Figure S10.** DAPI and Mito-tracker staining of HepG2 cells.

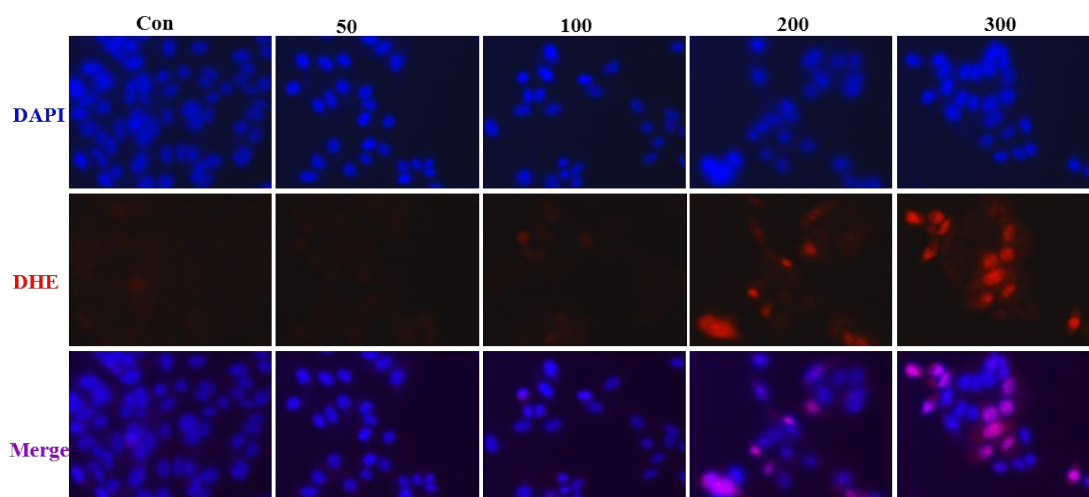
30

31



32

33 **Figure S11.** DAPI and Rh123 staining of HepG2 cells.



34

35 **Figure S12.** DAPI and DHE staining of HepG2 cells.