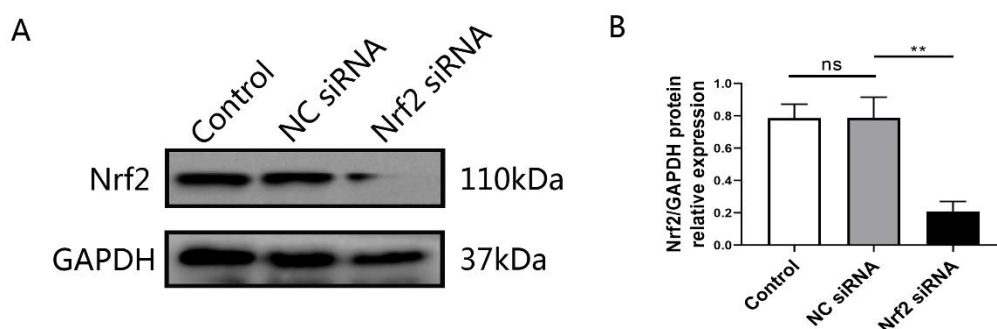
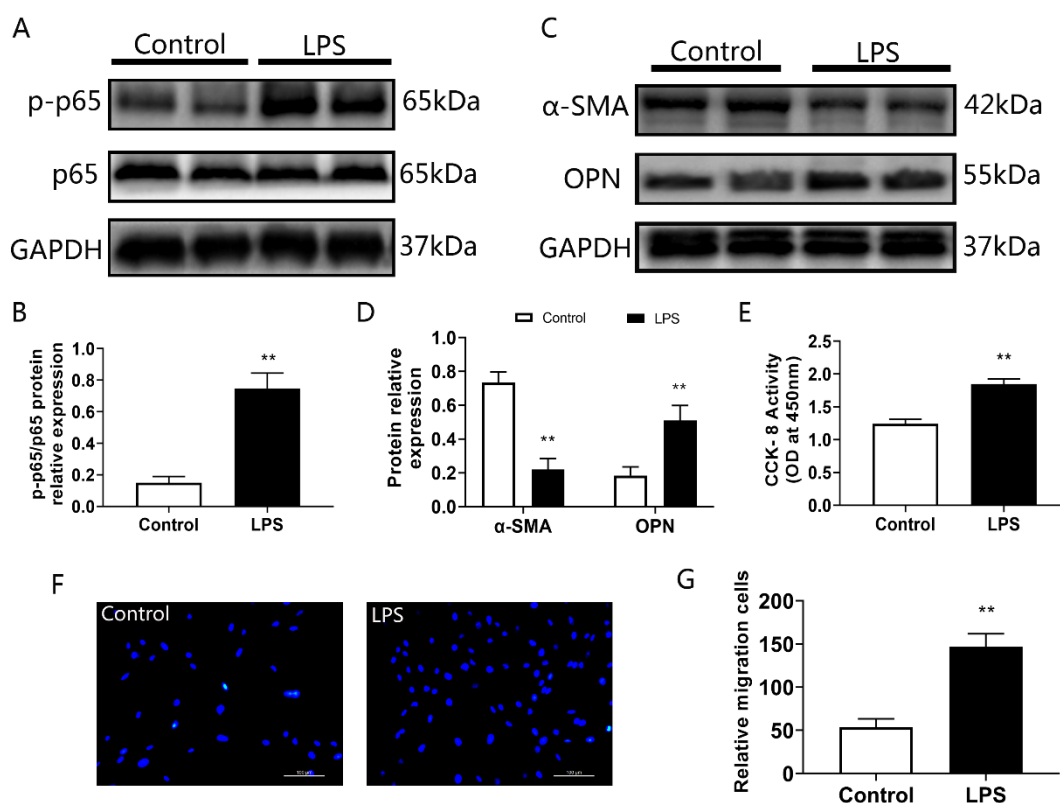


Supplementary Figure 1



Supplementary Figure 1. Western blotting detects the effect of siRNA mediated Nrf2 downregulation. (A). Representative blot pictures. (B). Semi-quantitative analysis of Nrf2 expression levels in each group (n=3). ** $p < 0.01$; ns, $p > 0.05$.

Supplementary Figure 2



Supplementary Figure 2. The effect of lipopolysaccharide on VSMC proliferation, migration, phenotype transformation and NF-κB activity. (A-B). Western blotting was used to measure the phosphorylation level of NF-κB p65 in VSMC (n=3). (C-D). Western blotting was used to examine the expression of α-SMA and OPN in VSMC (n=4). (E). CCK-8 assay was performed to detect the proliferation of VSMC (n=5). (F-G). Transwell assay was used to determine the migration of VSMC (n=5). ** $p < 0.01$ vs. Control group.