

Table S1. Sequences of the primers used for evaluation of the relative mRNA expression levels by

RT-PCR		
Gene	Forward	Reverse
$\beta$ -actin	ACCCAGCCATGTACGTAGC	GTGTGGGTTACCCCGTCTC
DPP-IV	GGCACCTGGGAAGTCATCGG	CCGGATTCAGCTCAACTGAGG
	G	C



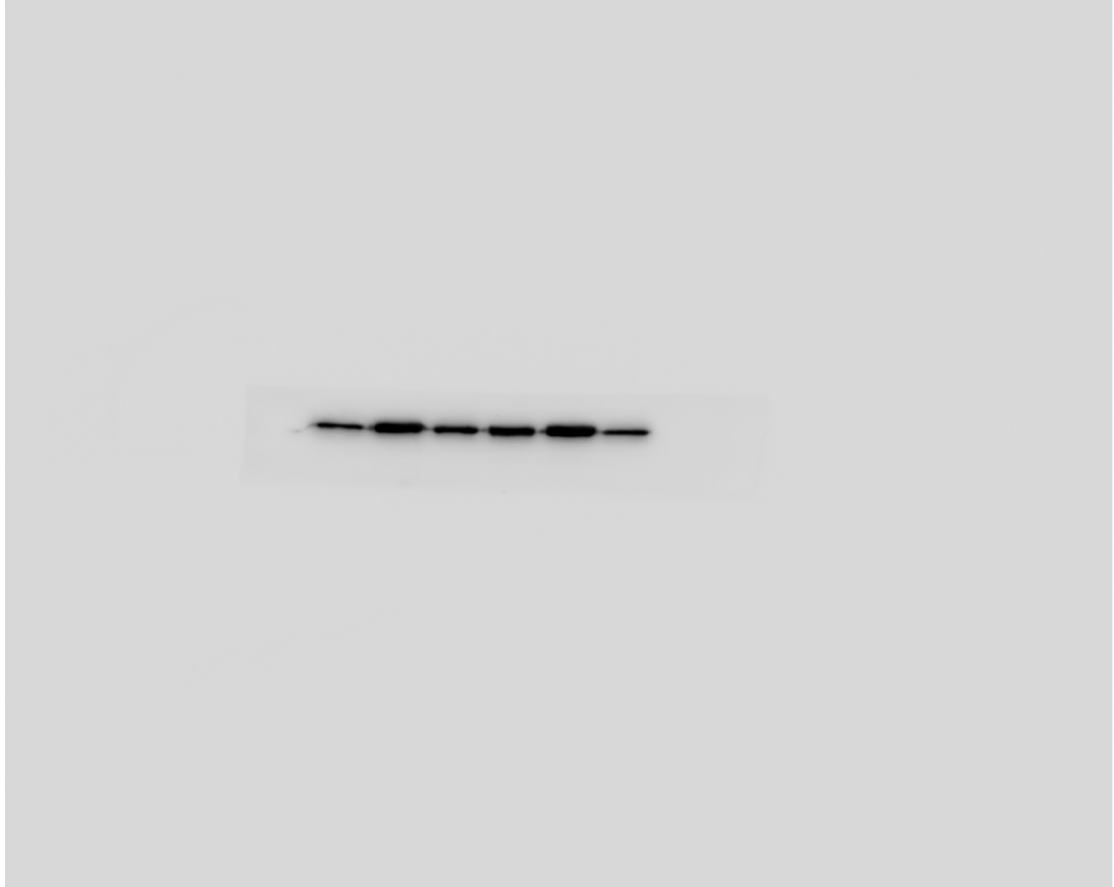
Cleaved caspase-3



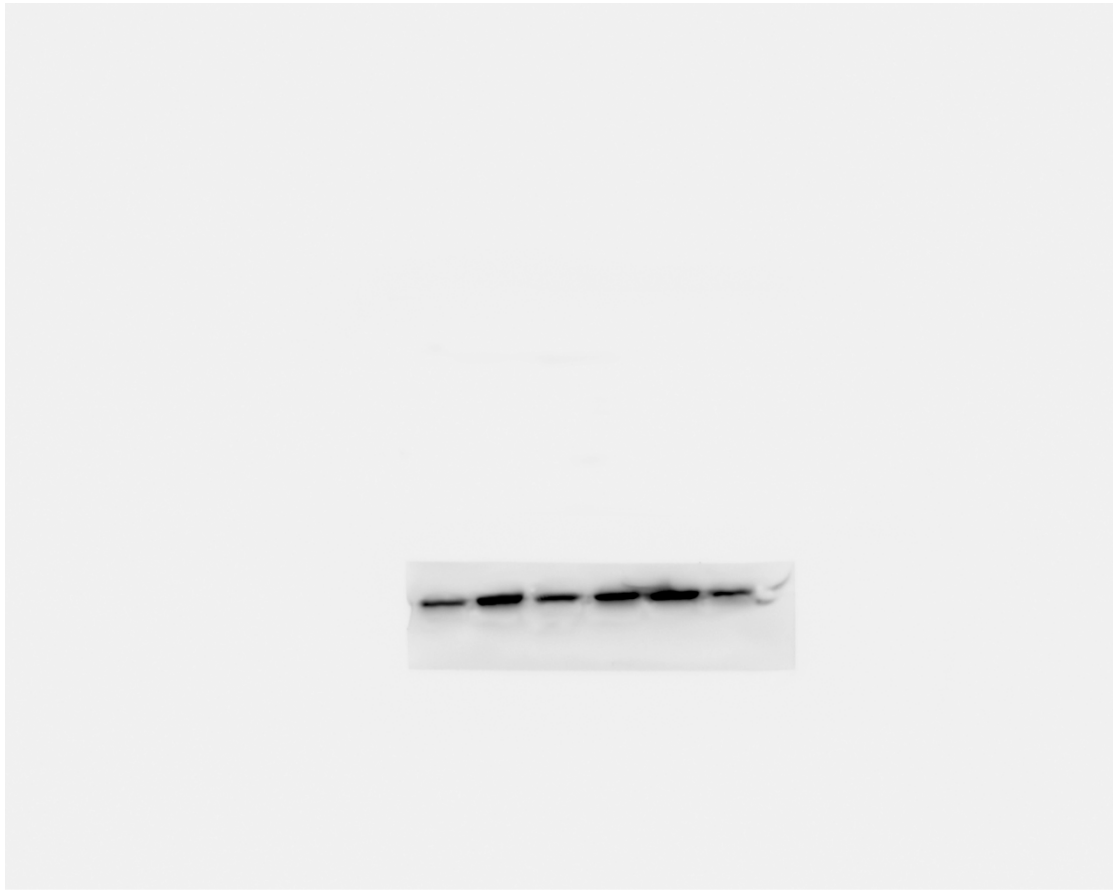
Cleaved caspase-9



CHOP



BIP



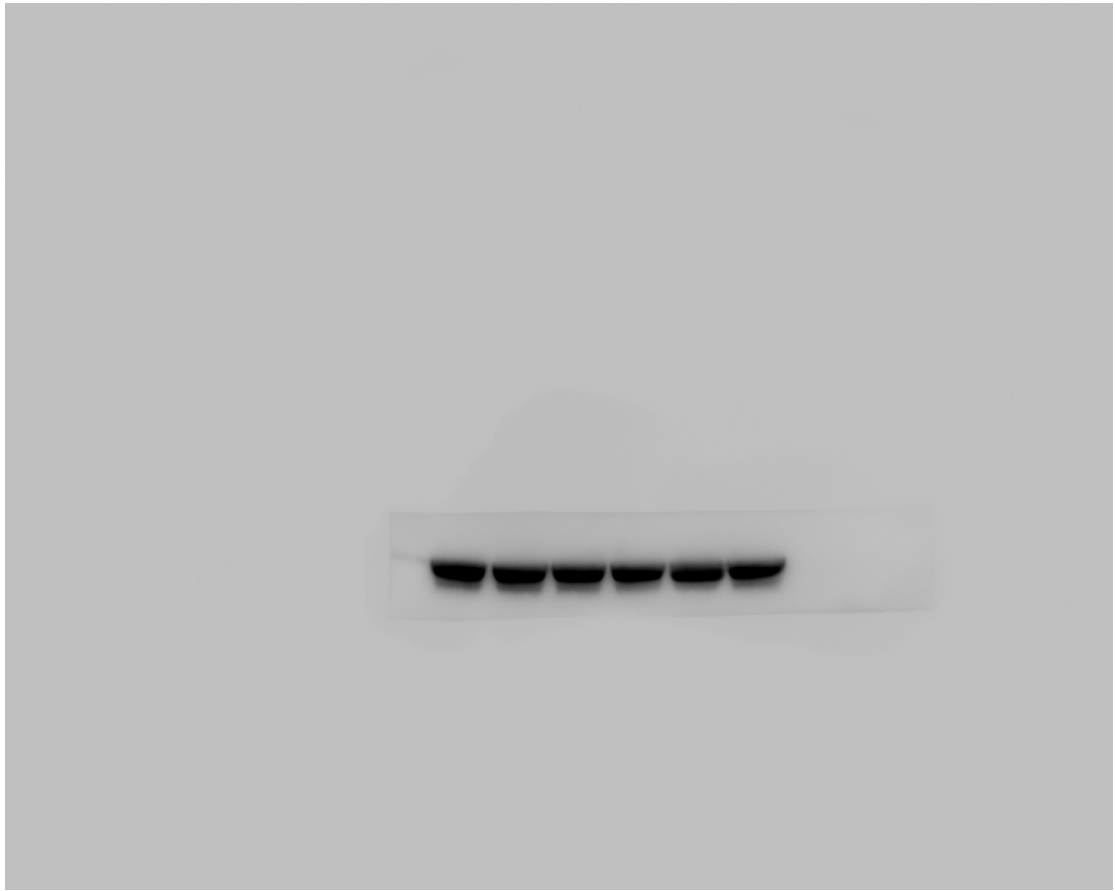
p-PERK



PERK



p-IRE1 $\alpha$



IRE1 $\alpha$





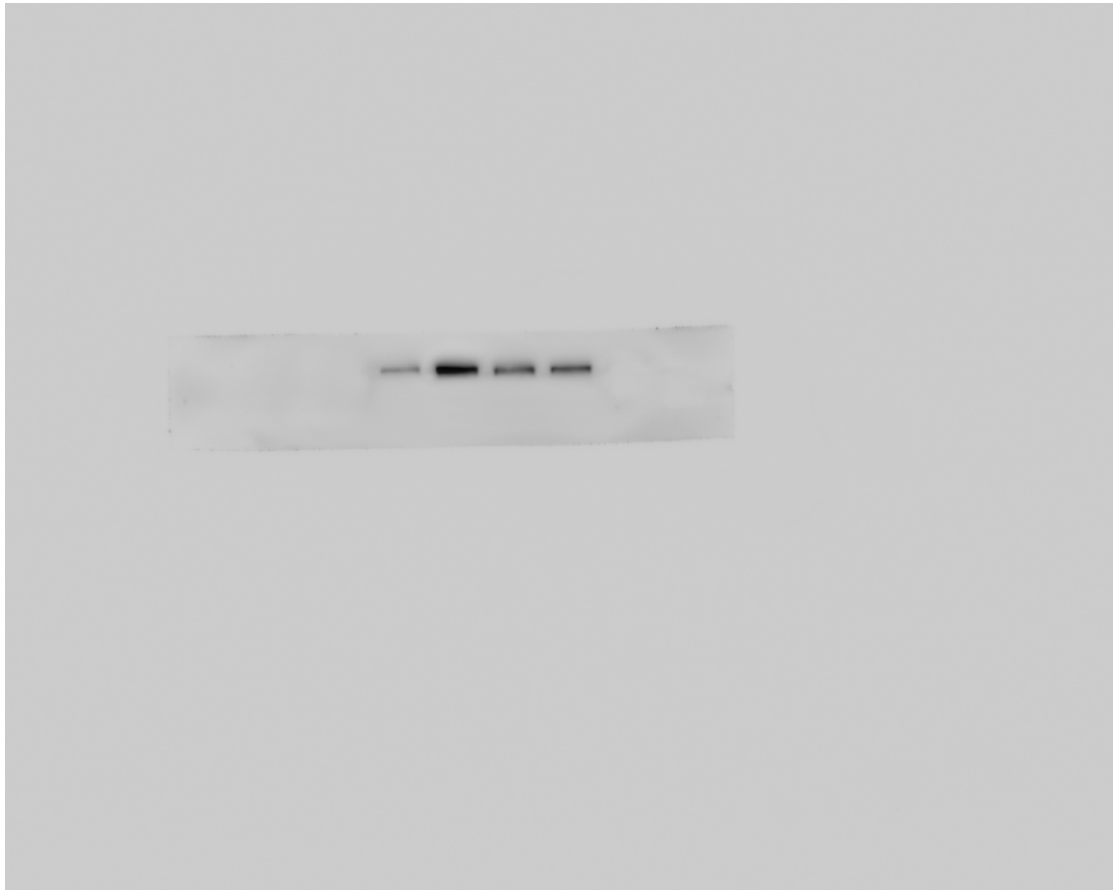
BIP



p-PERK



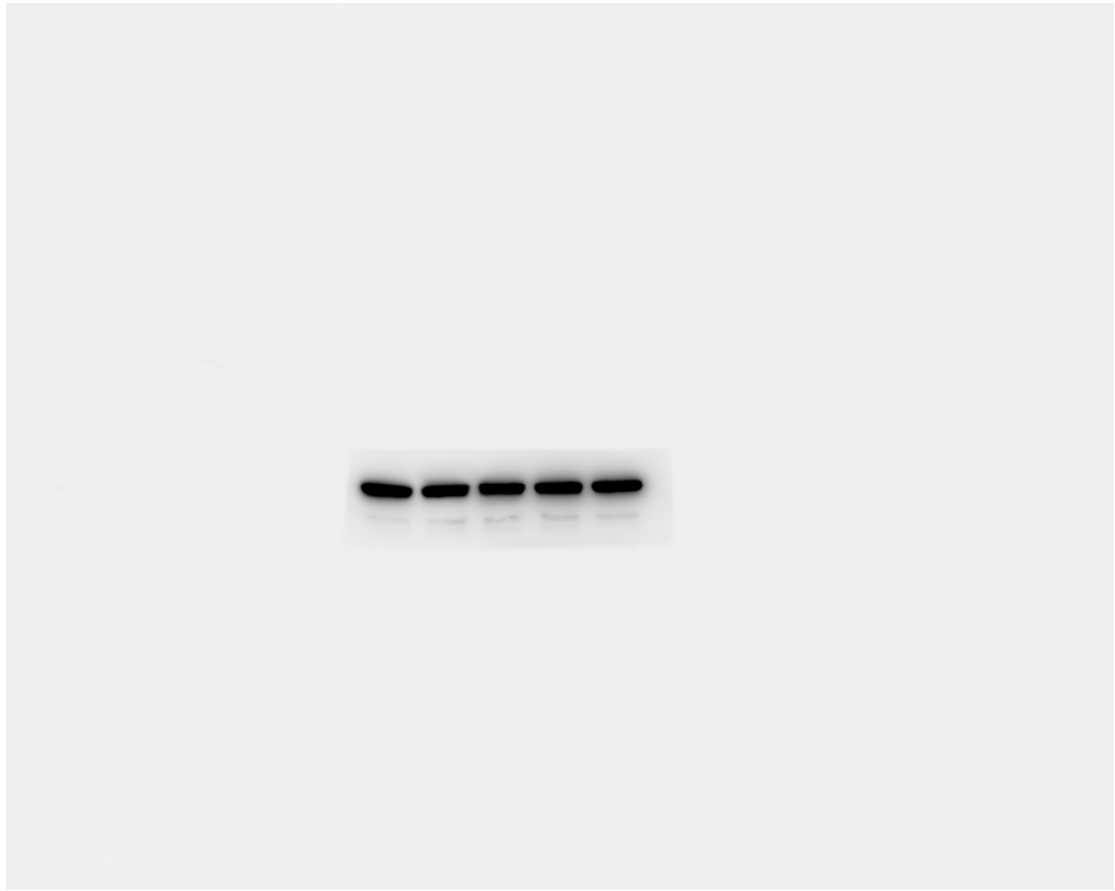
p-IRE1 $\alpha$



CHOP



$\beta$ -actin



$\beta$ -actin

Fig S1. Representative original western blot image.

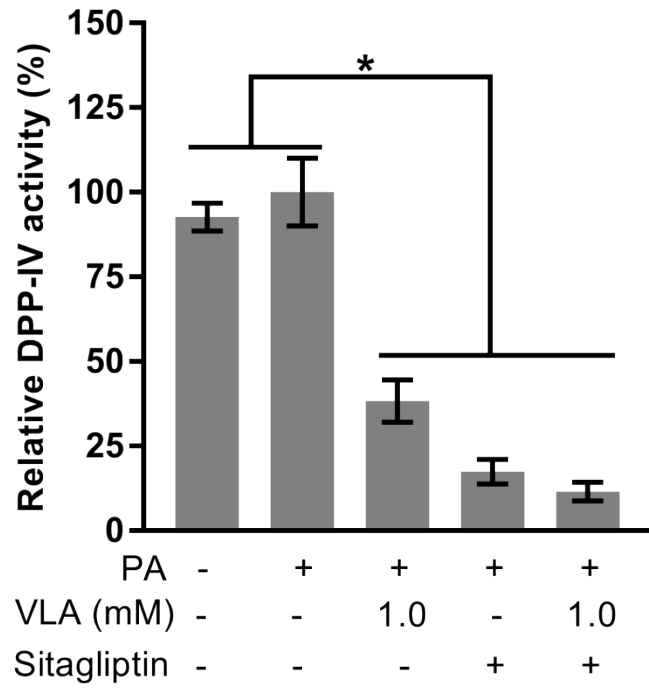
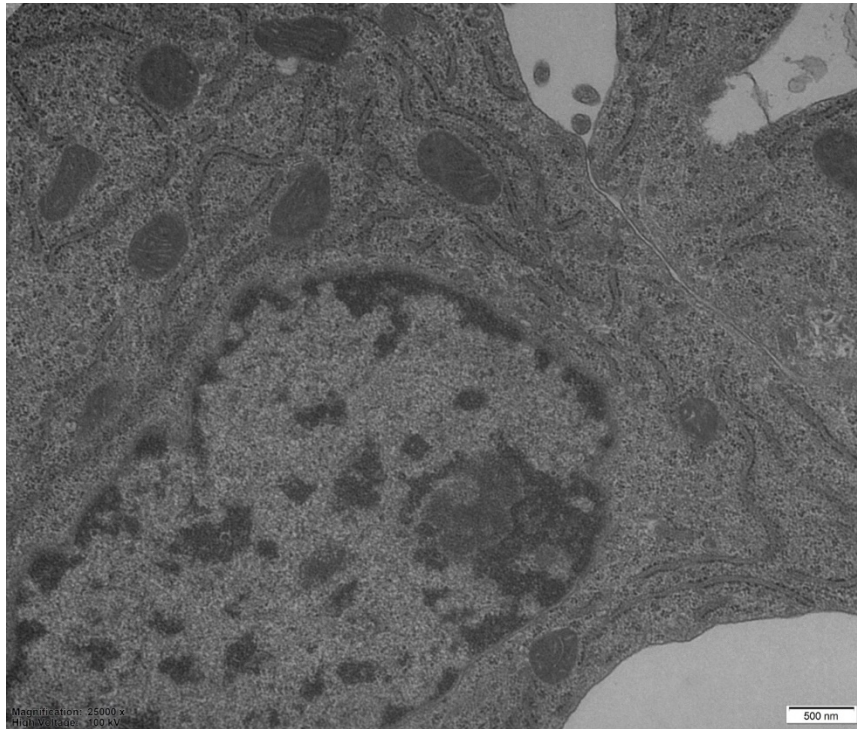
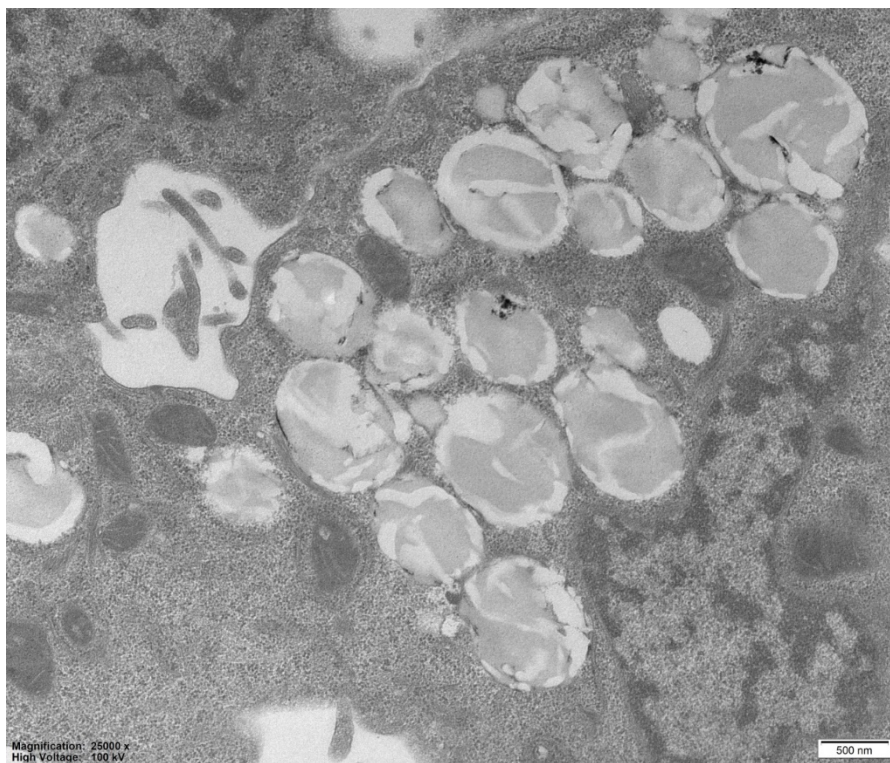


Fig S2. Relative DPP-IV activity of HepG2 cells was inhibited by VLA and sitagliptin.

## Control

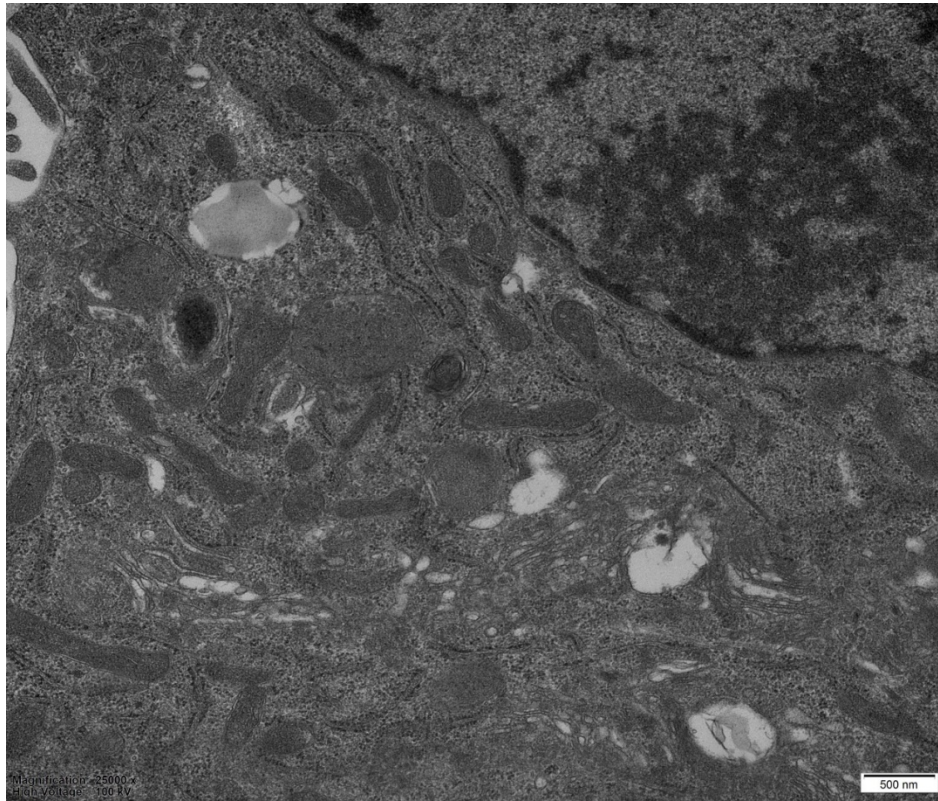


## PA

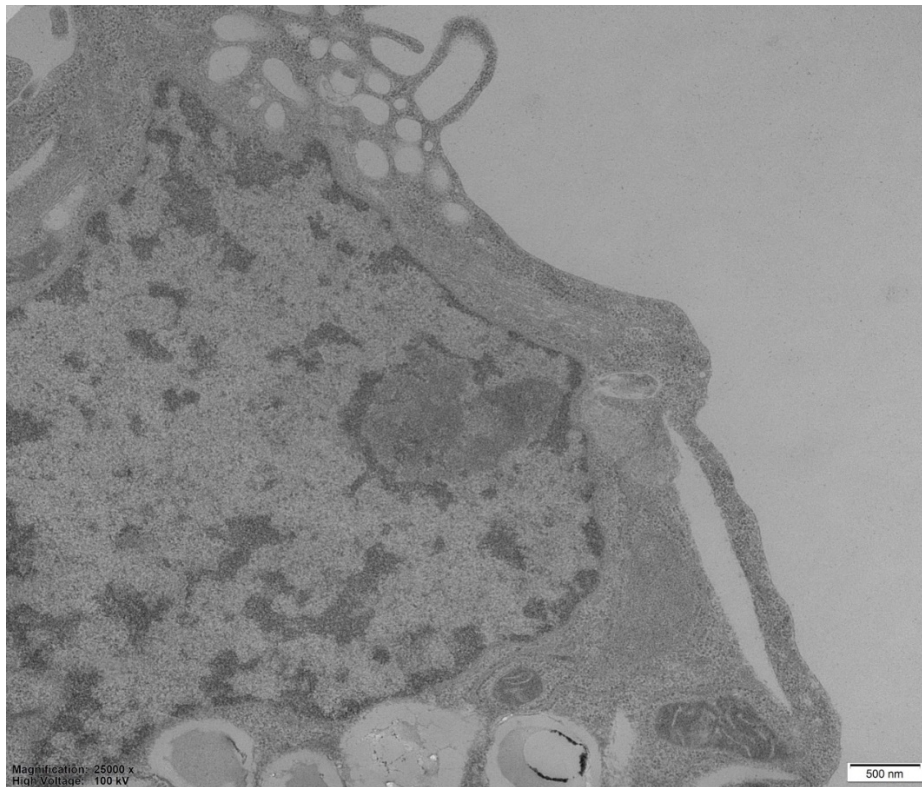




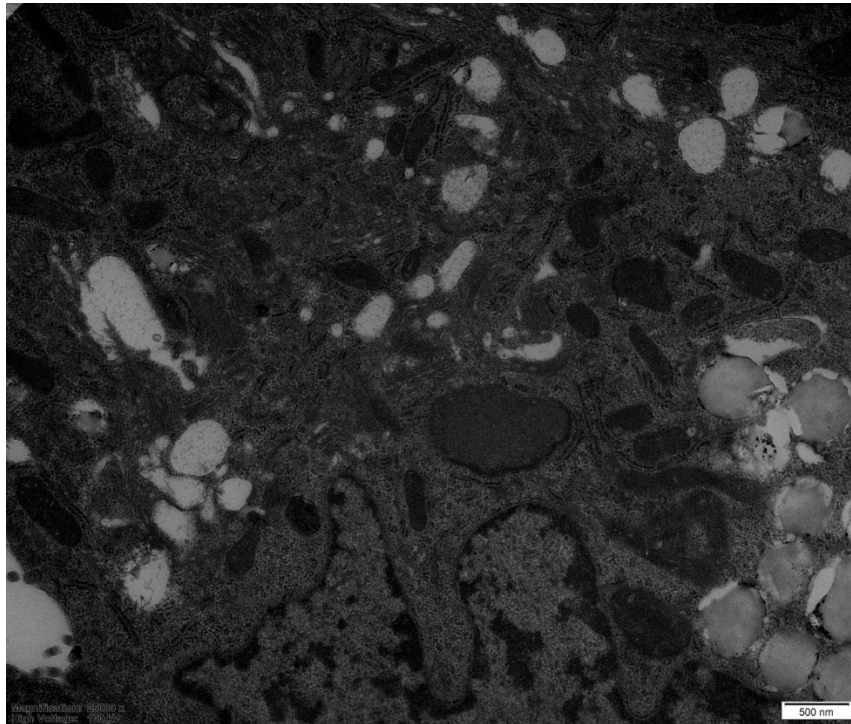
## 4-PBA



## 0.1 mM VLA



**0.5 mM VLA**



**1.0 mM VLA**

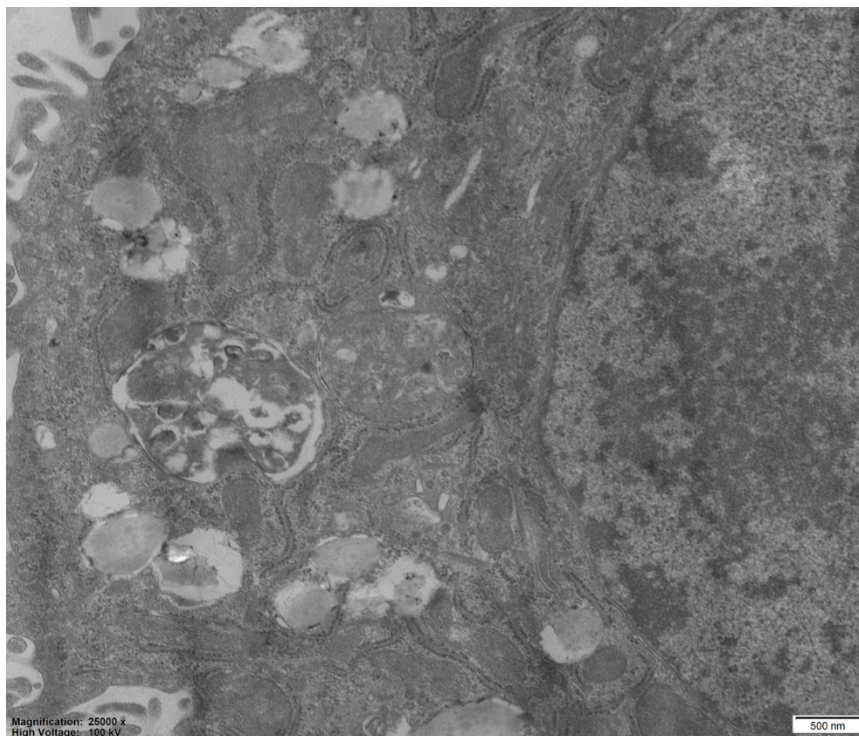


Fig S3. TEM images of the ER in HepG2 cells treated with medium (control), PA, 4-PBA or VLA (0.1-1.0 mM).