

## Western blot

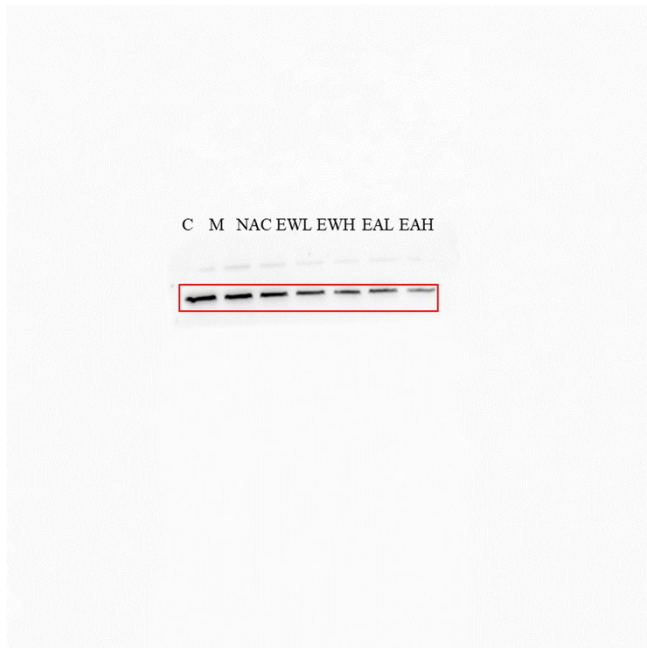
### 1, $\beta$ -actin (42KDA)



### 2, keap1 (70KDA)



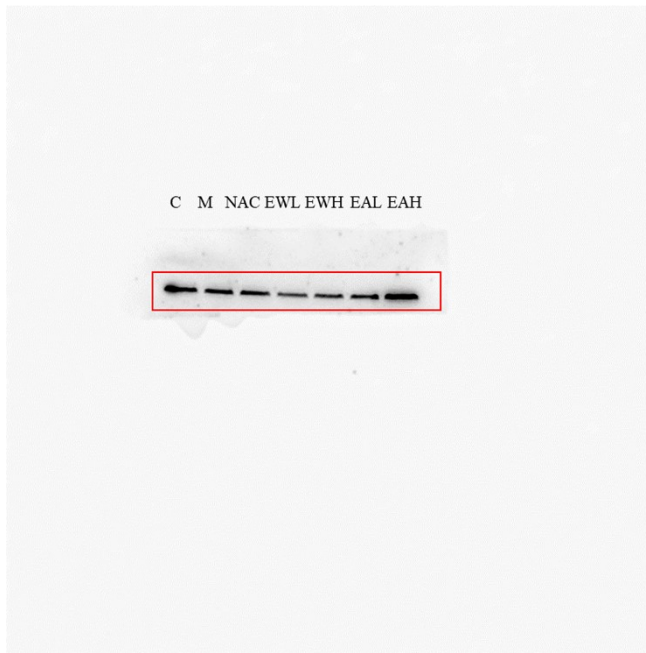
### 3, Cytoplasmic Nrf2 (110KDA)



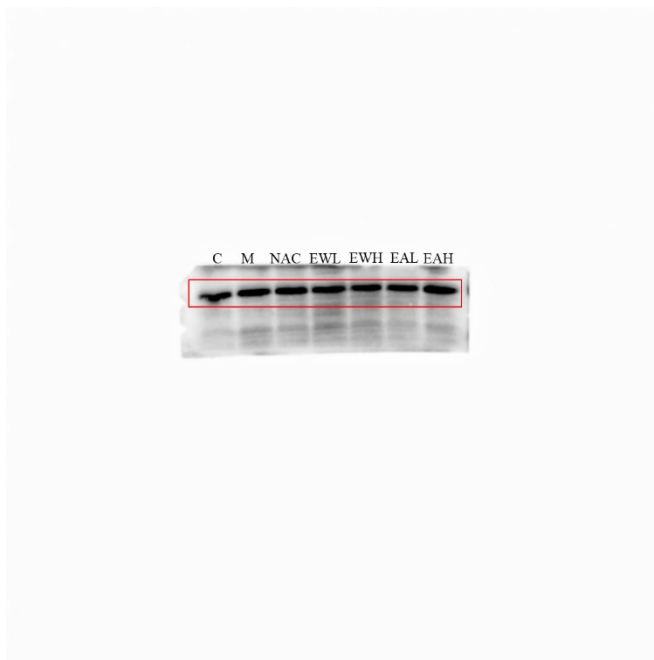
### 4, Lamin B (68KDA)



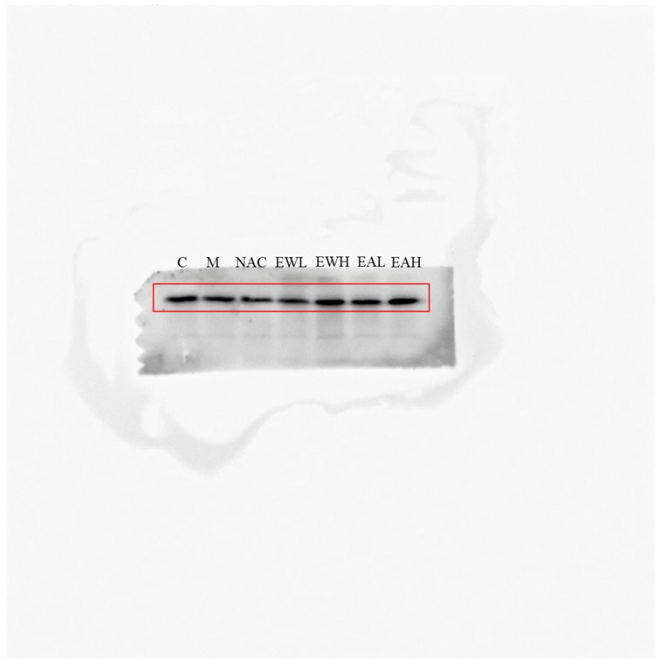
**5, Nuclear Nrf2 (110KDA)**



**6,  $\beta$ -actin (42KDA)**



**7, HO-1 (33KDA)**



**8, NQO1 (31KDA)**

