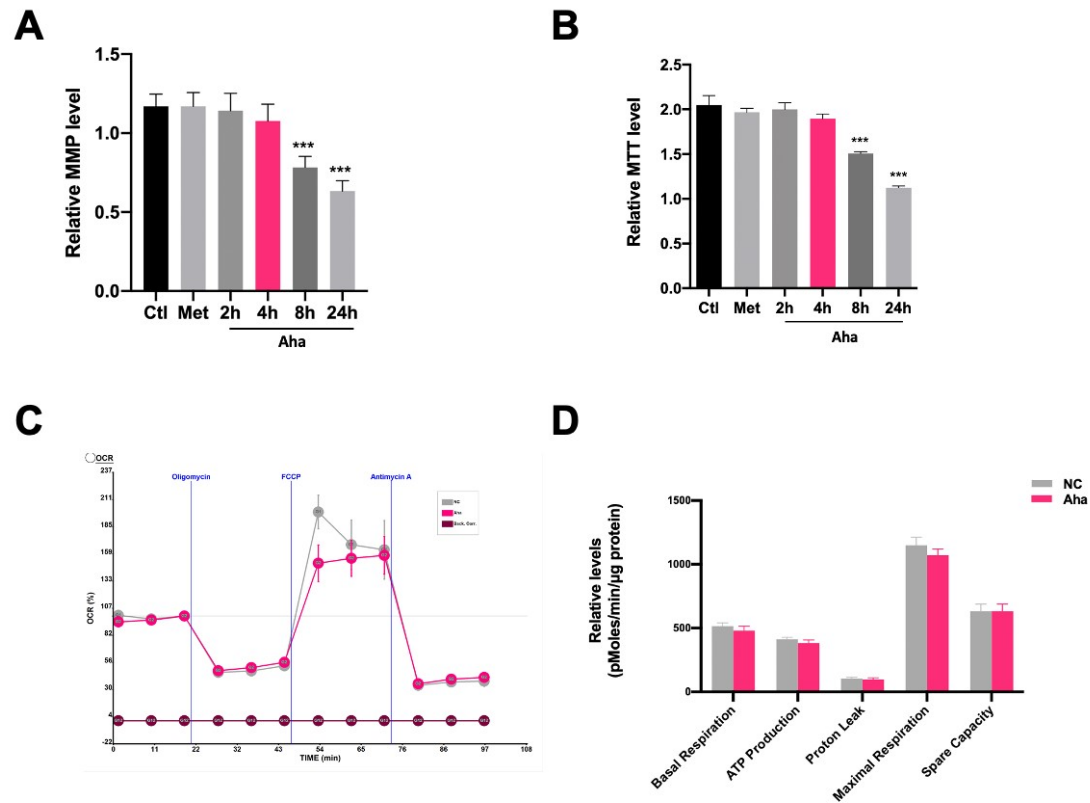
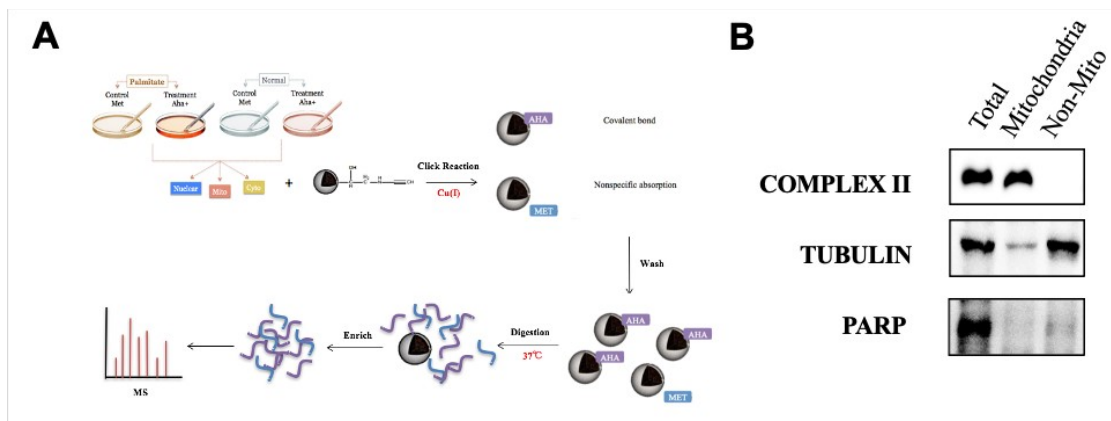


Supplement Figure 1. MTT level of PU treatment under different concentrations with 300 μ M

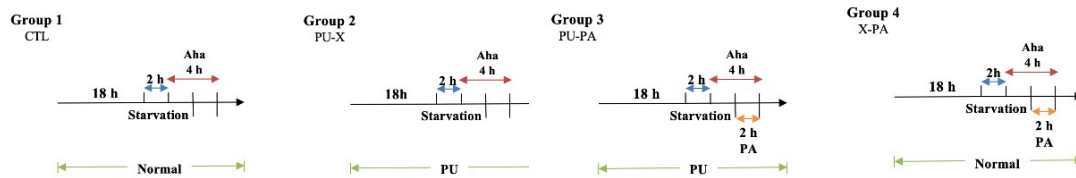
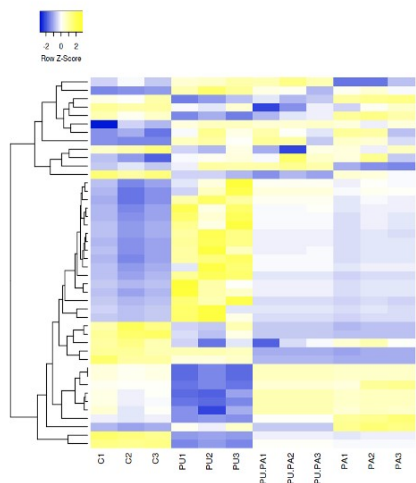
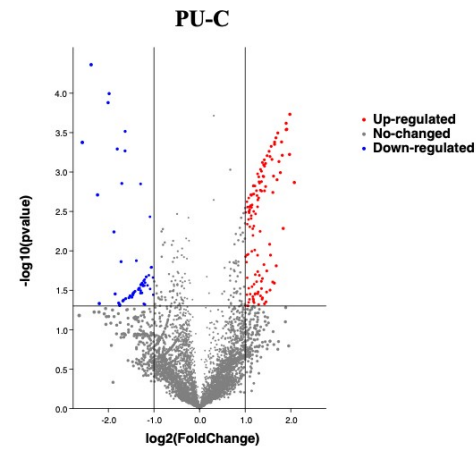
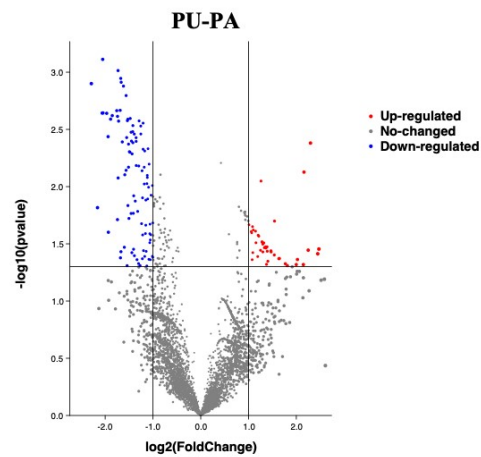
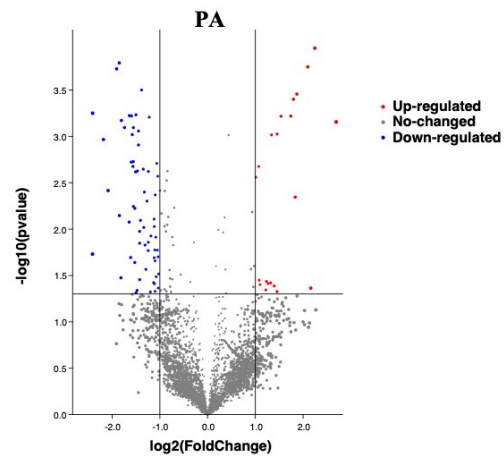
PA (* $P < 0.05$, ** $P < 0.01$, *** $P < 0.001$.)



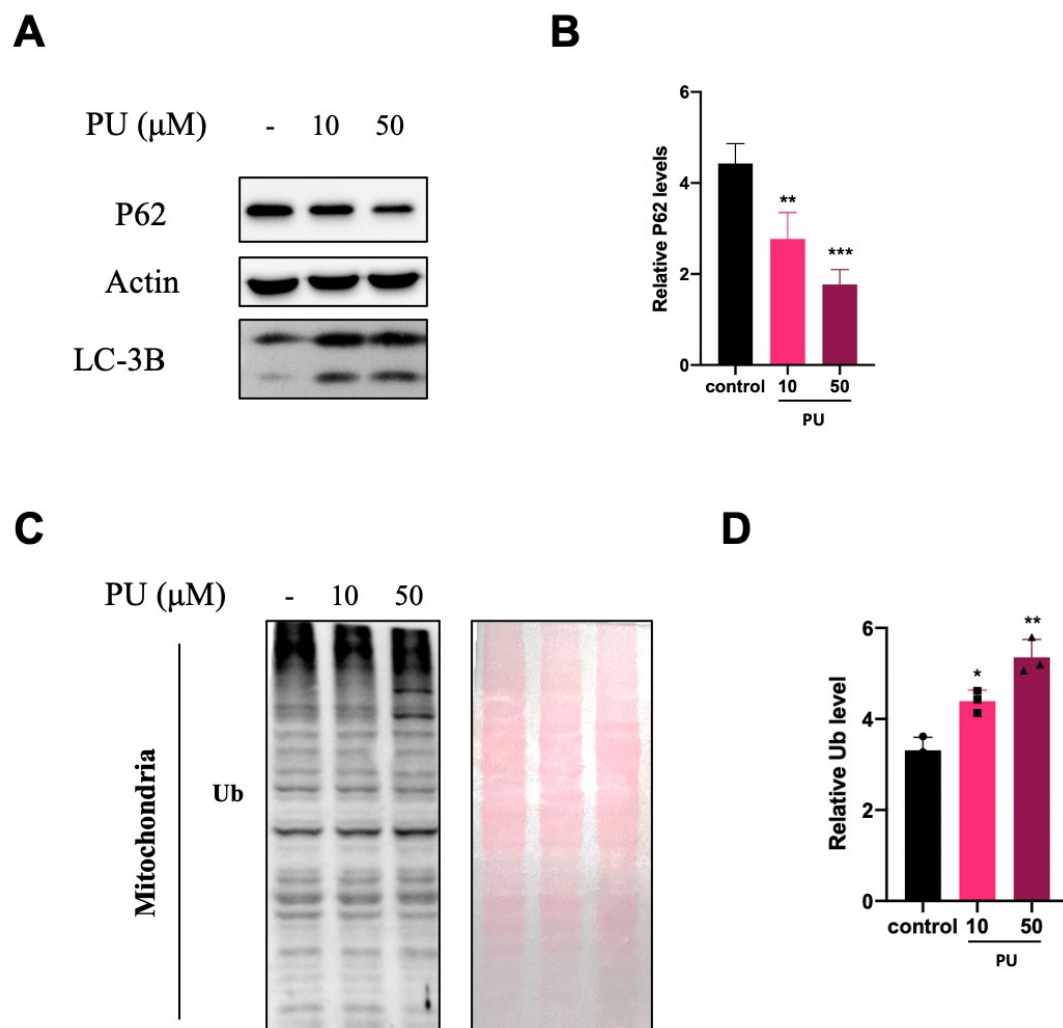
Supplement Figure 2. The effect of Aha treatment to HepG2 cells. (A-B): MMP and MTT of Aha treatment HepG2 cells in different time courses. (C-D): The OCR analysis of mitochondrial function after Aha treatment. (***) $P < 0.001$.



Supplement Figure 3. The sketch of experiment flow (A). Western Blot of cell fractionation, marked as total, mitochondria and other parts (B).

A**B****C****D****E**

Supplement Figure 4. The sketch of experiment flow (A). The global mitochondrial proteomic changes (B). The volcano charts of each pair (C-E). (mean \pm SEM, $n = 3$, $*P < 0.05$).



Supplement Figure 5. Western Blot of p62 and LC3B under 10 μ M and 50 μ M PU (A).

Analysis result of p62 (B). Relative ubiquitin levels 10 μ M and 50 μ M PU (C). (Data are mean \pm SEM of 3 independent experiments, * P < 0.05, ** P < 0.01).