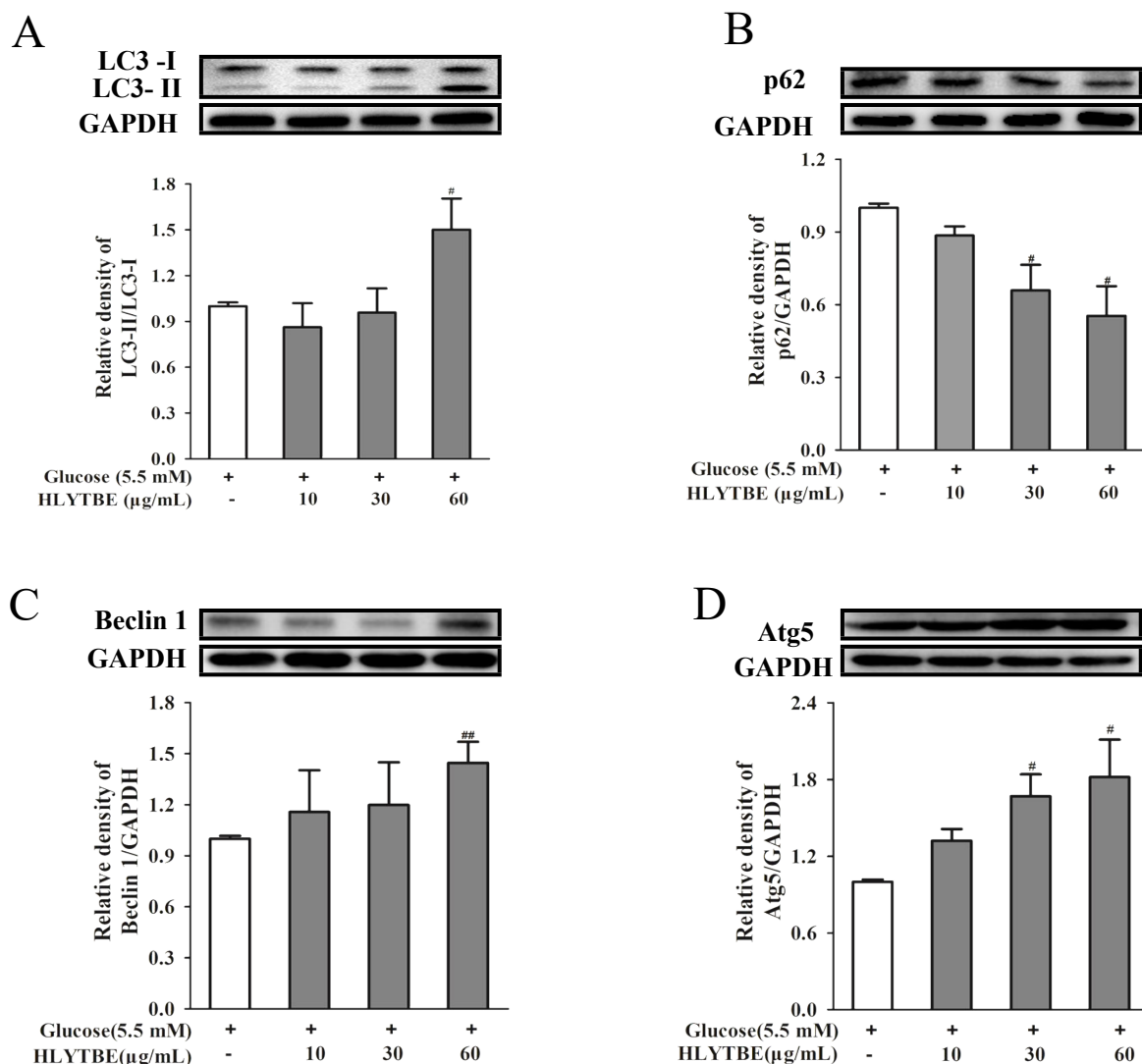


## Supplementary information



**Fig. S1 Effect of HLYTBE on autophagy in HUVECs.** The cells were co-cultured with HLYTBE (10, 30, and 60 µg/mL) in the presence of D-glucose (5.5 mM) for 48 h. The protein expression levels of LC3 (A), p62 (B), Beclin1 (C), and Atg5 (D) were determined by western blot analysis. The results are presented as mean ± SEM (n = 3~4). #  $P < 0.05$ , ##  $P < 0.01$  vs. untreated group.