

Supplementary information

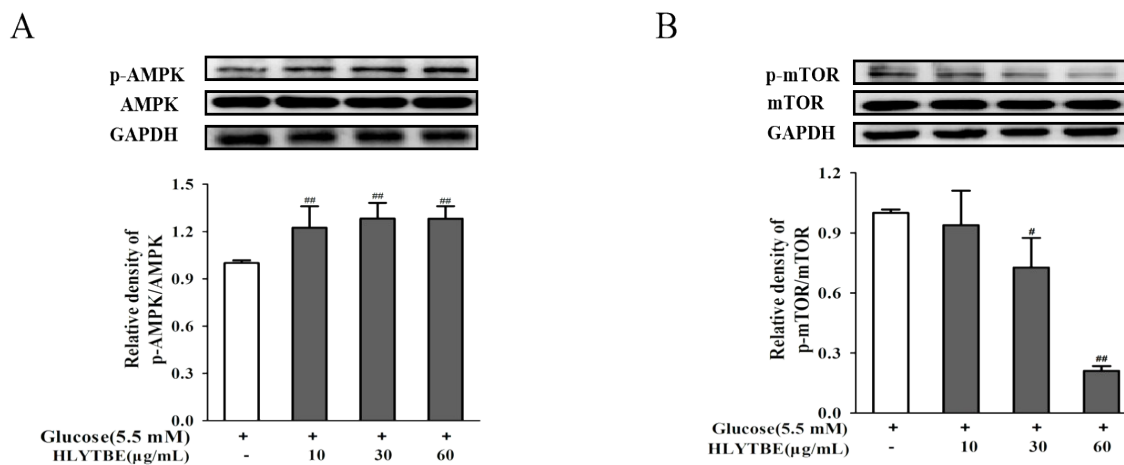


Fig. S2 Effect of HLYTBE on the AMPK/mTOR signalling pathway in HUVECs.

The cells were co-cultured with HLYTBE (10, 30, and 60 μg/mL) in the presence of D-glucose (5.5 mM) for 48 h. The levels of p-AMPK (A) and p-mTOR (B) were determined by western blot analysis. The results are presented as mean ± SEM (n =3).

$P < 0.05$, ## $P < 0.01$ vs. untreated group.