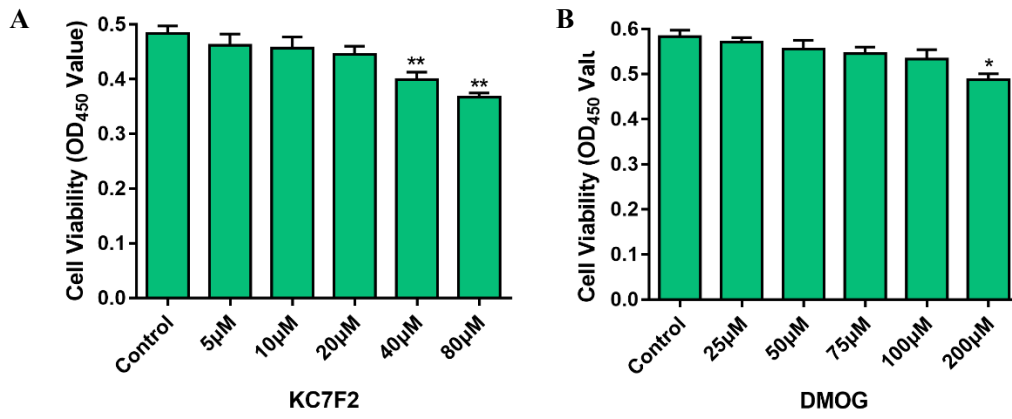


Table S1 Primer sequences and product size designed for RT-qPCR

Target gene	Forward or Reverse	Primer sequence (5'-3')
<i><math>\beta</math>-actin</i>	Forward primer	TCTGGCACCACACCTTCTA
	Reverse primer	AGGCATACAGGGACAGCAC
<i>HK2</i>	Forward primer	GATGAAGGTGGAAATGGA
	Reverse primer	CCTGTGGGATGGAGTAGA
<i>PFK1</i>	Forward primer	TGCCGCTGTTCGCTCTAC
	Reverse primer	AGCCTCCTCAATCTGACCTTT
<i>EGLN3</i>	Forward primer	GGCAAATACTATGTCAAGGAGC
	Reverse primer	CGTGTAACCTGGCGTCCC
<i>HIF1<math>\alpha</math></i>	Forward primer	TCCAAGCCCTCCAAGTATGA
	Reverse primer	TGCCTTAGCAGTGGTCGTTT
<i>TNF-<math>\alpha</math></i>	Forward primer	CATCTTCTCAAAATTCGAGTGACAA
	Reverse primer	TGGGAGTAGACAAGGTAGAACCC
<i>IL-1<math>\beta</math></i>	Forward primer	AACCTGCTGGTGTGTGACGTTC
	Reverse primer	CAGCACGAGGCTTTTTTGTGT

**Figure S1**



**Figure S1.** The cell viability in treatment of HIF inhibitor or activator. EpH4-Ev cells were treated with KC7F2 or DMOG for 24 h and the cell viability were examined using a CCK-8 assay kit. Data are represented as mean  $\pm$  SEM (n=3). \* $P < 0.05$ , \*\* $P < 0.01$ .