

Supplementary information

Jiahua Fang^{a,b}, Mei Li^{a,b}, Guoqiang Zhang^{a,b,c}, Guocheng Du^{a,b,c}, Jingwen Zhou^{a,b,c}, Xin Guan^{*a,b,c}, and Jian Chen^{*a,b,c}

^a *Key Laboratory of Industrial Biotechnology, Ministry of Education, School of Biotechnology, Jiangnan University, Wuxi, Jiangsu 214122, China;*

^b *Science Center for Future Foods, Jiangnan University, Wuxi, Jiangsu 214122, China;*

^c *Engineering Research Center of Ministry of Education on Food Synthetic Biotechnology, Jiangnan University, Wuxi 214122, China*

** Corresponding author.*

Jian Chen, Xin Guan

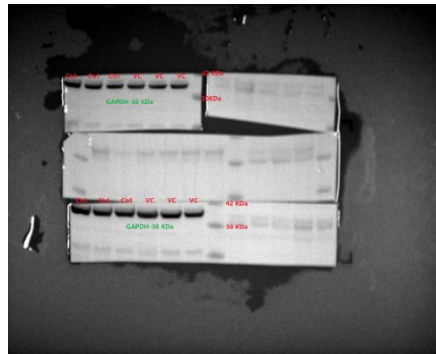
Science Center for Future Foods, Jiangnan University, 1800 Lihu Rd, Wuxi, Jiangsu 214122, China.

Phone: +86-510-85329031, Fax: +86-510-85918309

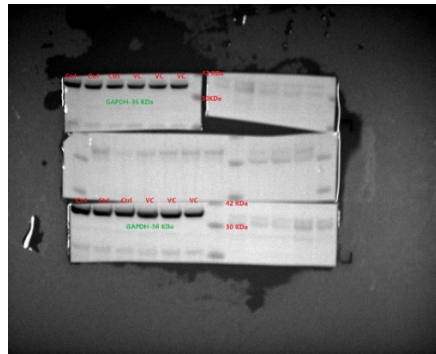
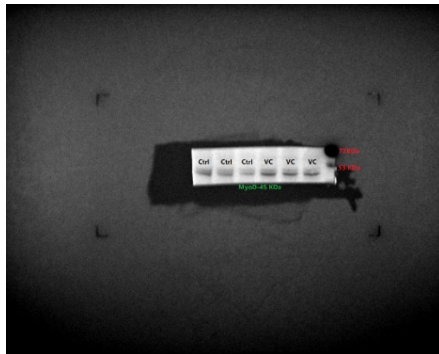
E-mail: jchen@jiangnan.edu.cn, guanxin@jiangnan.edu.cn.

Western Blot-Related to Figure 2

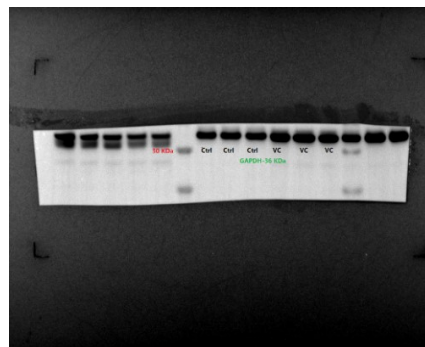
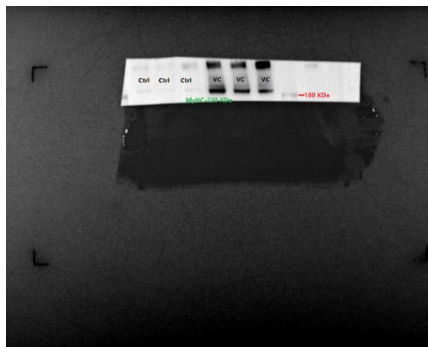
1. Pax7



2. MyoD-

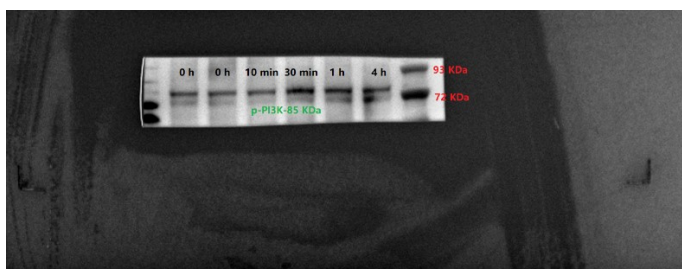


3. MyHC

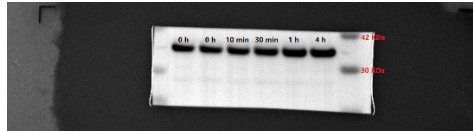
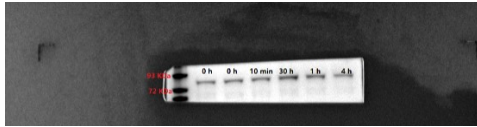


Western Blot- Related to Figure 4

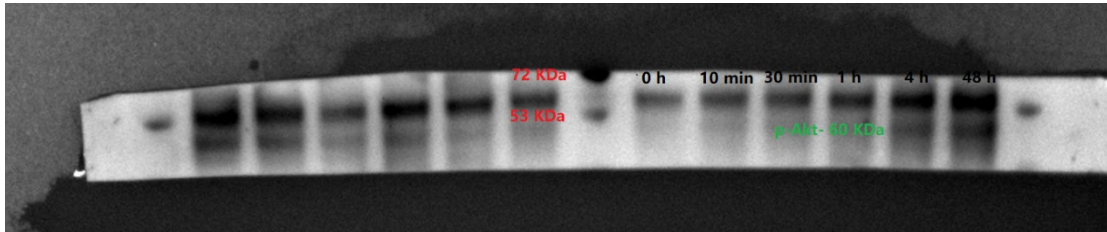
1. p-PI3K



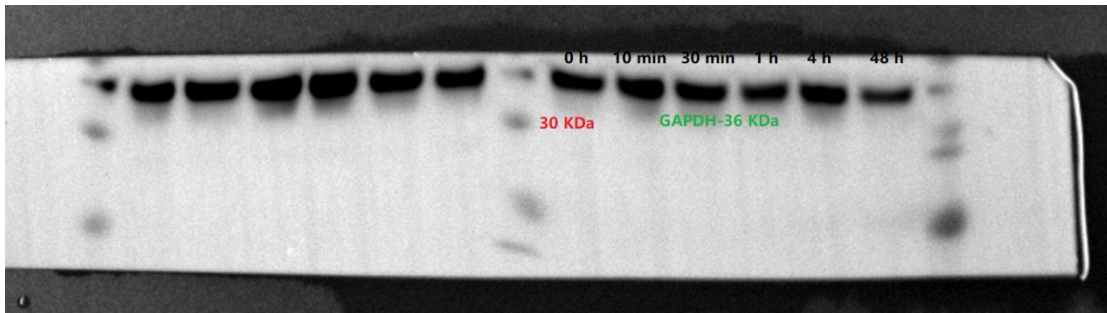
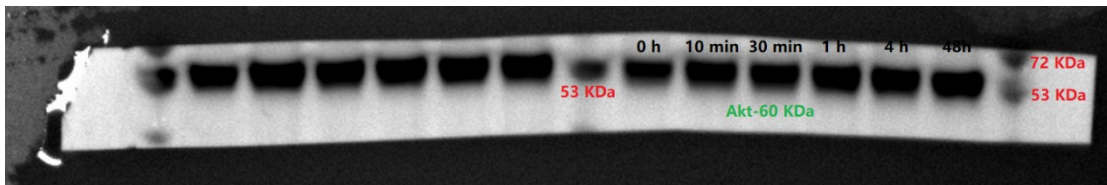
2. PI3K



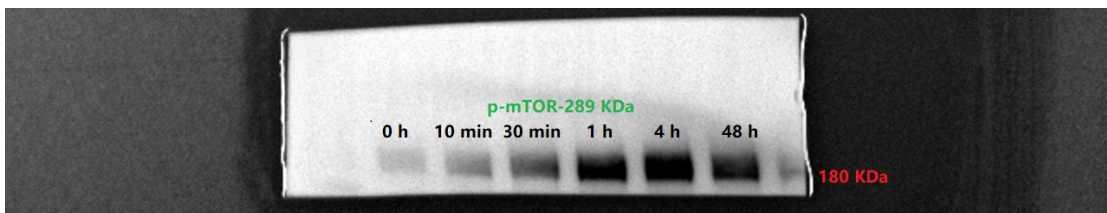
3. p-Akt



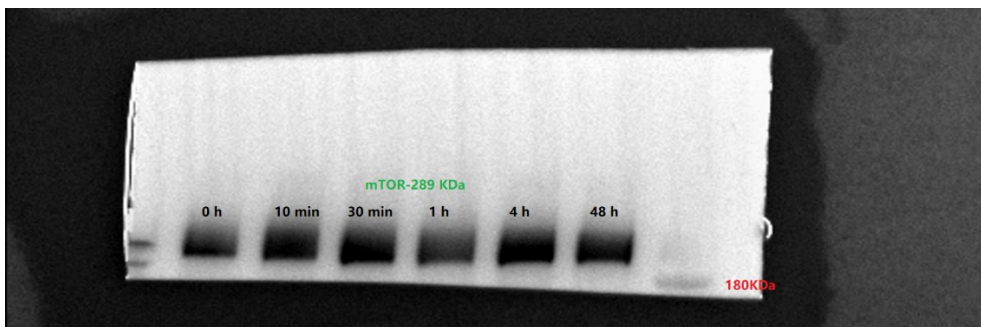
4. Akt

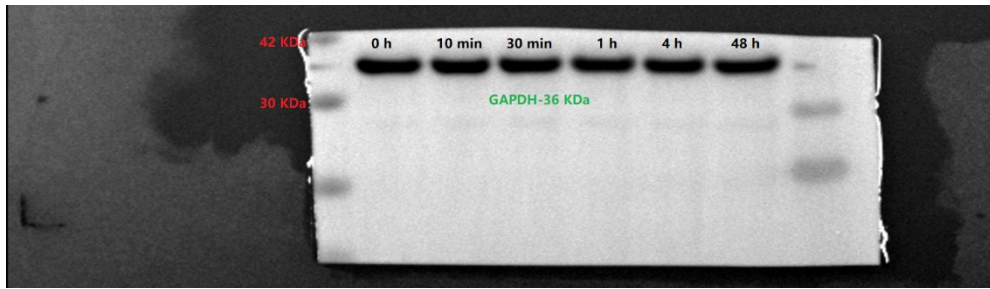


5. p-mTOR

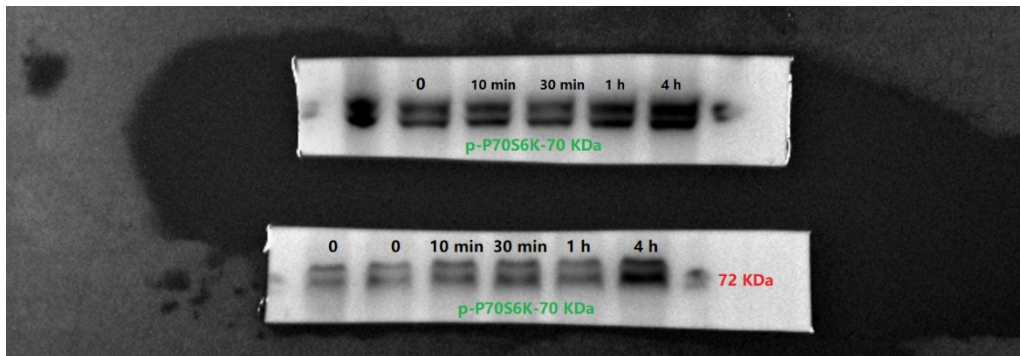


6. mTOR

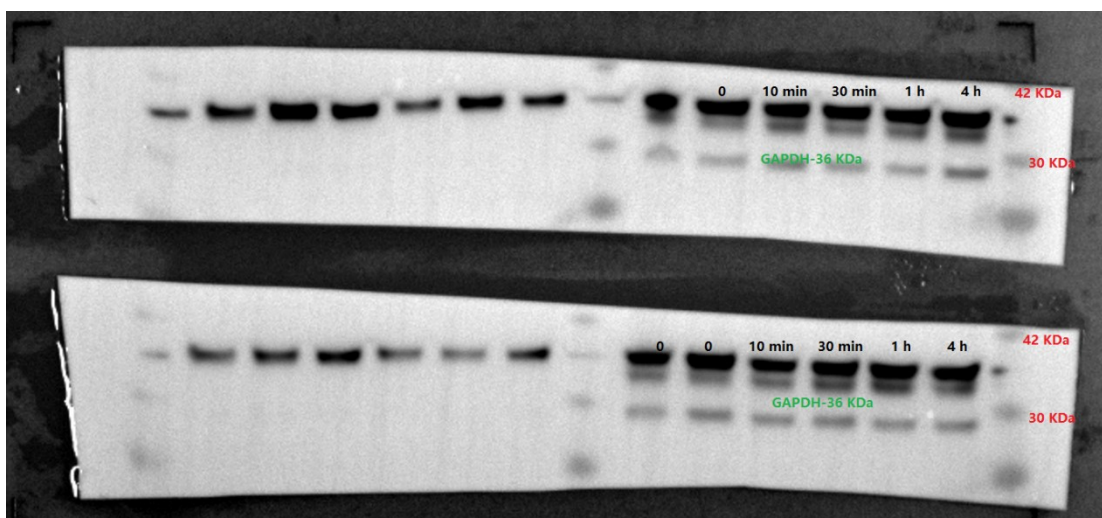
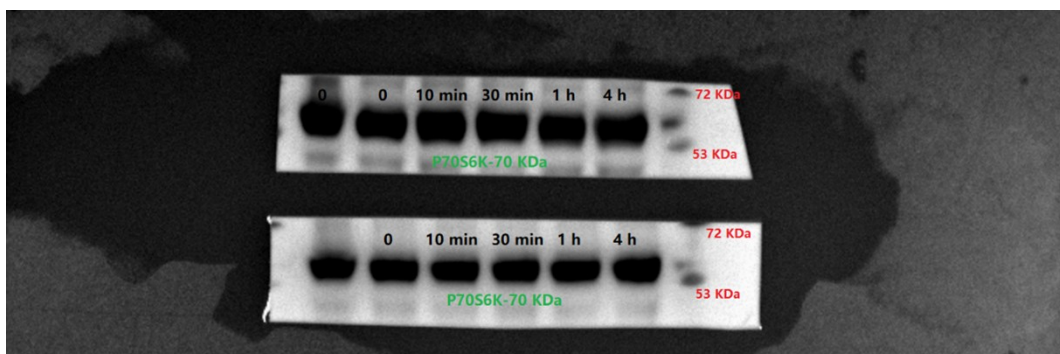




7. p-P70S6K

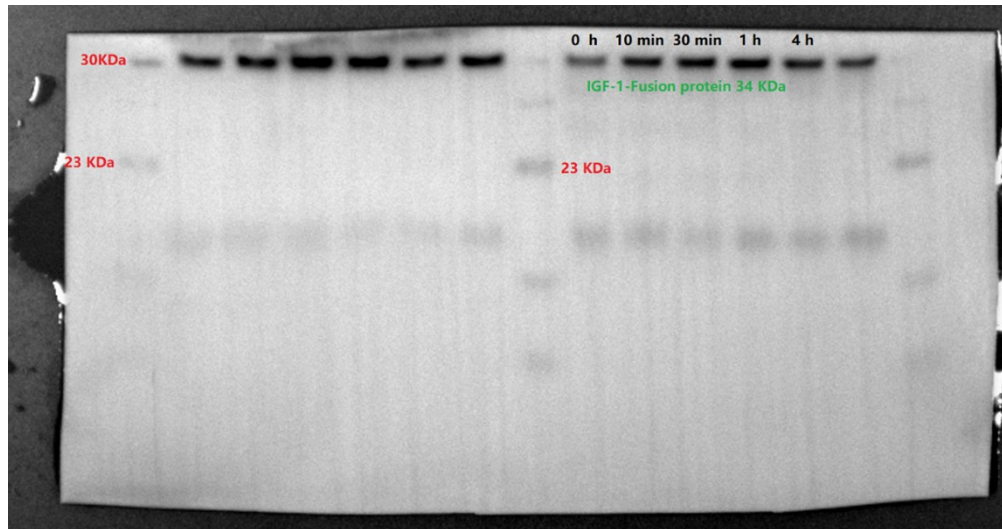


8. P70S6K

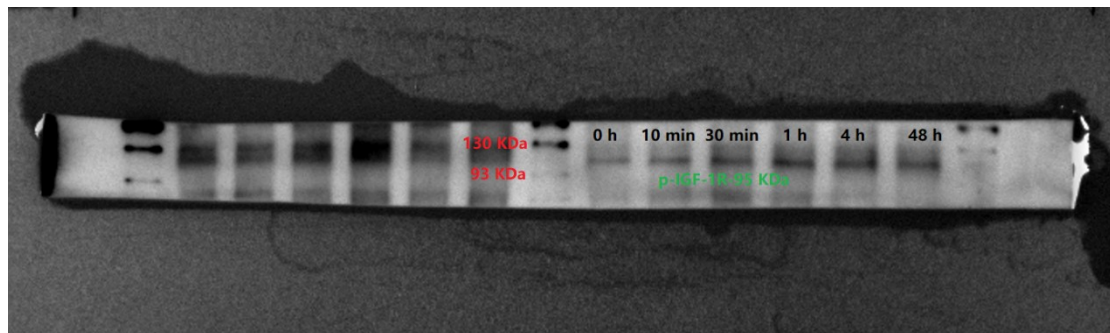


Western Blot- Related to Figure 5

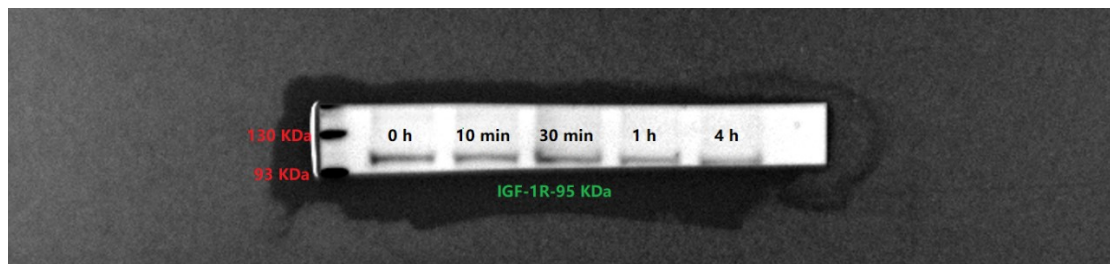
1. IGF-1



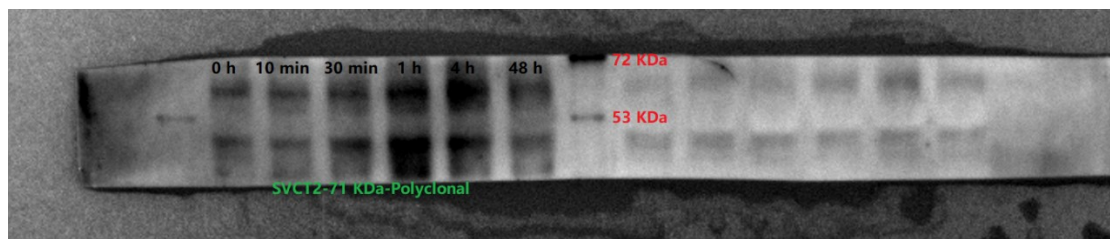
2. p-IGF-1R

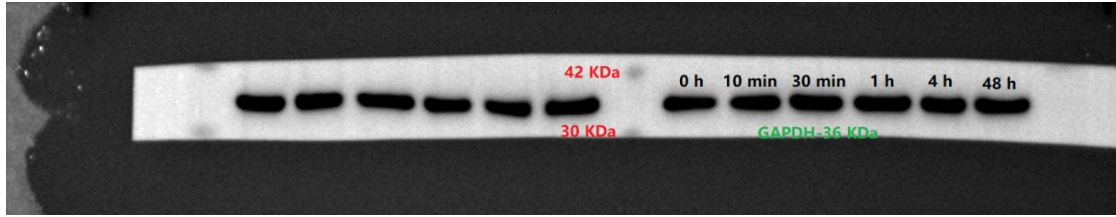


3. IGF-1R

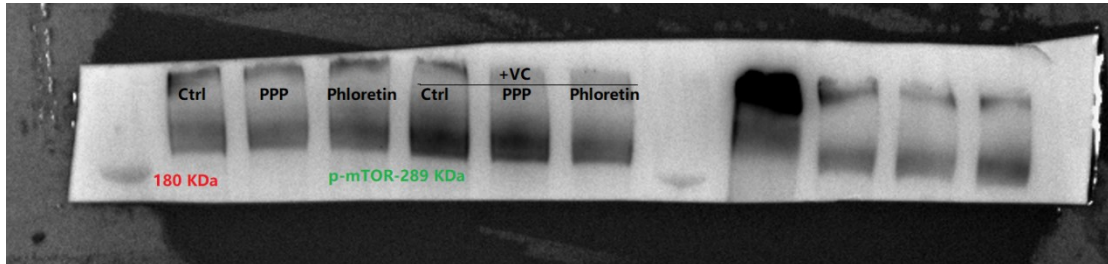


4. SVCT2

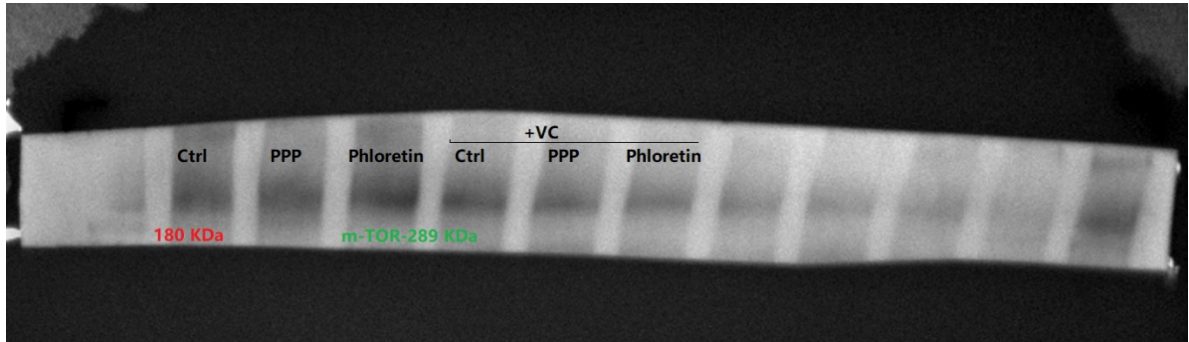




5. p-mTOR



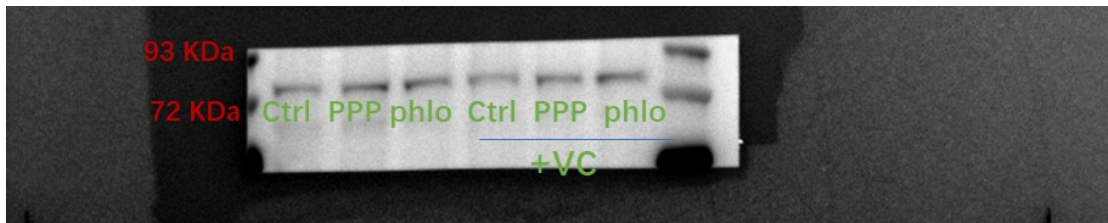
6. mTOR



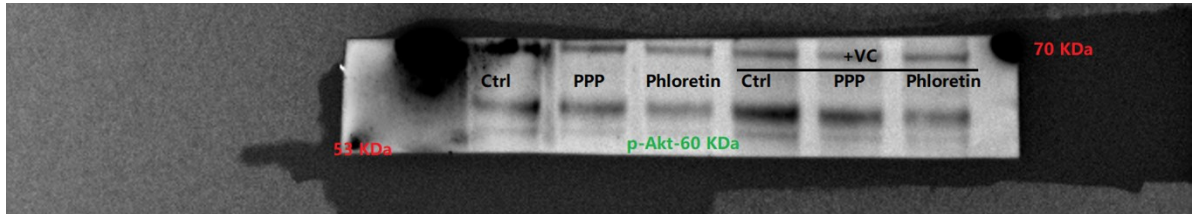
7. p-PI3K



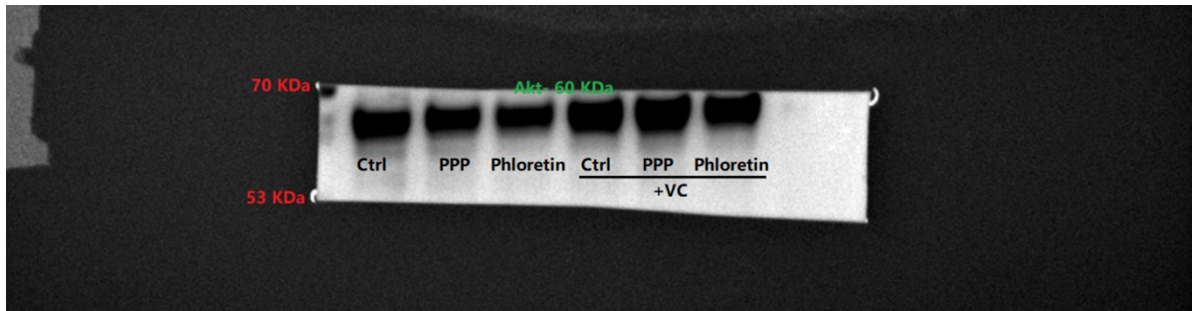
8. PI3K



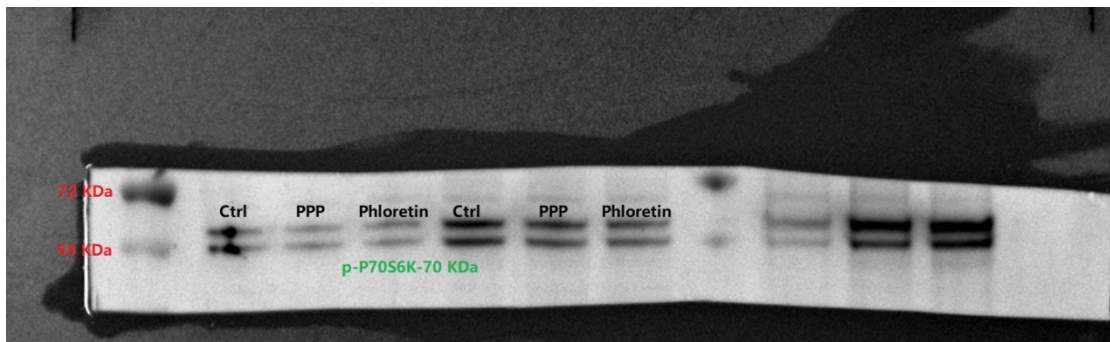
9. p-Akt



10. Akt

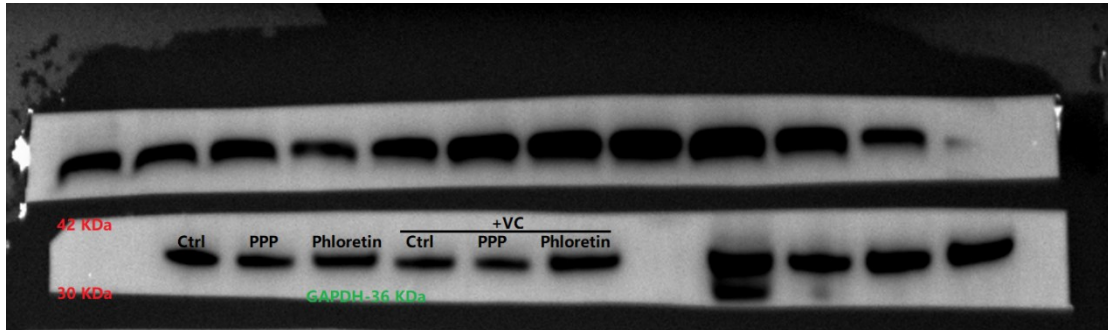


11. p-P70S6K

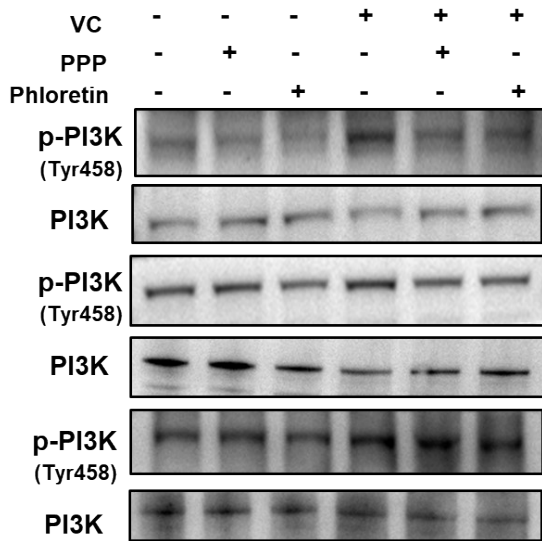


12. P70S6K





Quantitative values of Figure 5E-p-PI3K/PI3K (three independent experiments)



p-pi3k			pi3k			Normalized to ctrl	
1	4351.48		1	12098.53	0.35967	1.003479695	
2	2926.066		2	10068.21	0.290624	0.810841824	
3	3128.622		3	9896.087	0.316147	0.882051197	
4	5855.856		4	9792.794	0.597976	1.668353101	
5	3895.208		5	9182.38	0.424205	1.183530884	
6	4218.794		6	9527.945	0.442781	1.235359278	
1	7514.075		1	14079.79	0.533678	1.008651245	
2	7749.388		2	13023.95	0.595011	1.124570422	
3	6862.903		3	11907.87	0.576333	1.089269728	
4	9324.409		4	9058.953	1.029303	1.945382983	
5	7418.752		5	11070.27	0.670151	1.266585646	
6	7892.631		6	12307.97	0.641262	1.211984409	
1	9970.149		1	14547.63	0.685345	1.028018145	
2	10483.79		2	12747.87	0.822395	1.233593037	
3	9272.53		3	12618.47	0.734838	1.102256676	
4	12882.45		4	10045.45	1.282416	1.923624584	
5	10326.47		5	8794.945	1.174137	1.761205784	
6	8298.359		6	8228.602	1.008477	1.512716073	