

Supplementary files:

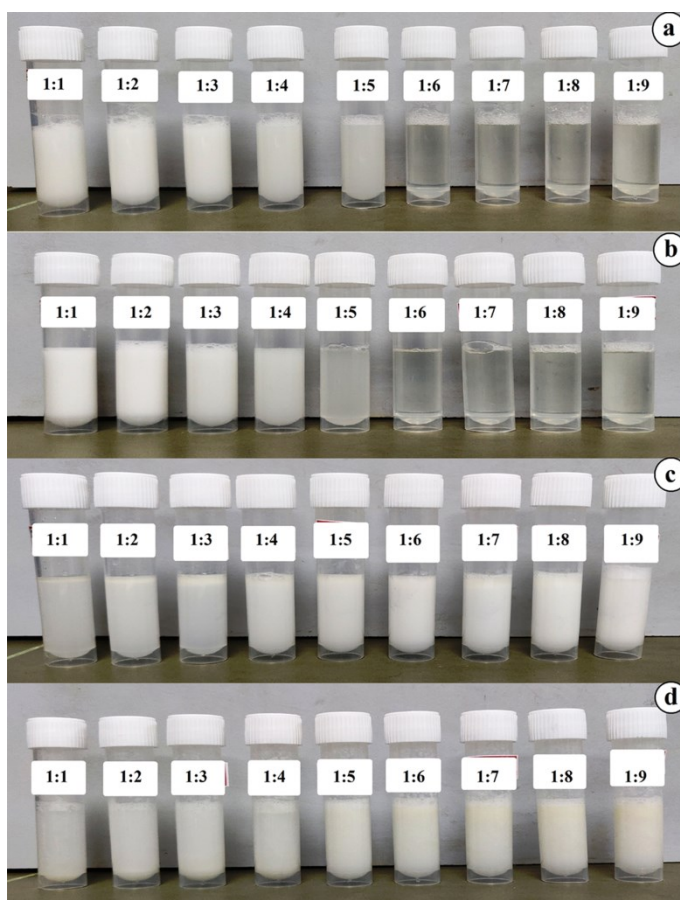


Fig.S1. Visual appearance of EuME using surfactants
(a) Tween 20 (b) Tween 80 (c) Brij 93 (d) Span 80
(1:1–1:9 denotes ratios of oil: surfactant)

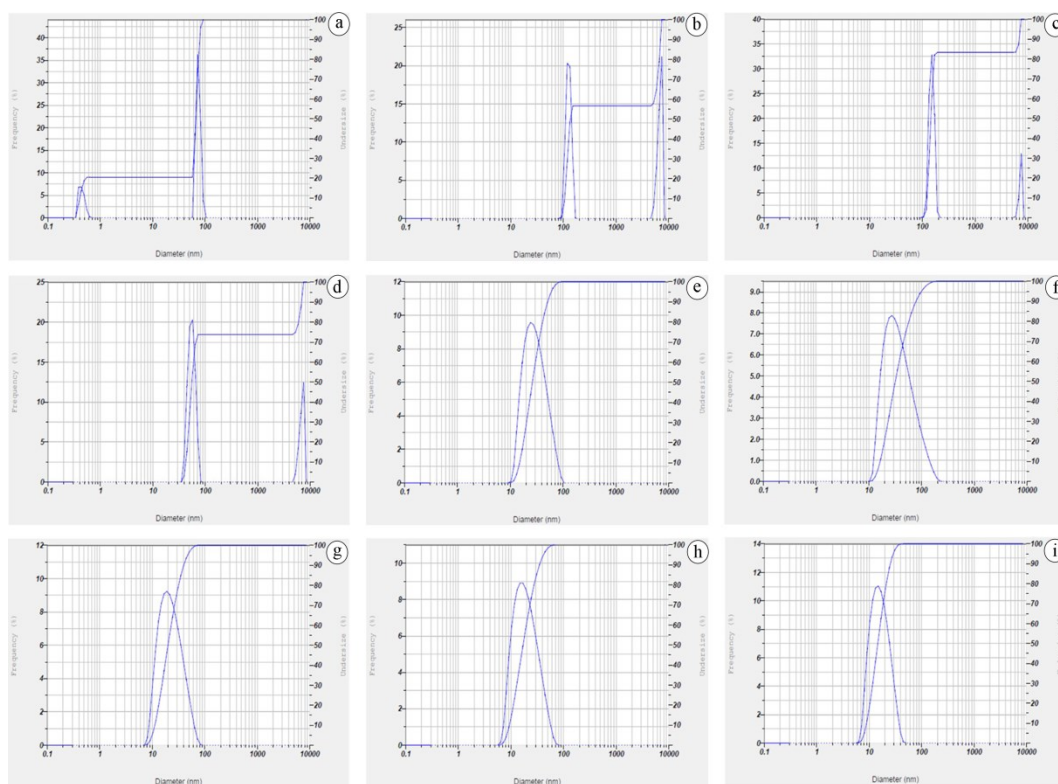


Fig.S2. Droplet size distribution (DLS technique) images of EuME using tween 80
 (a-i denotes ratio of 1:1-1:9)

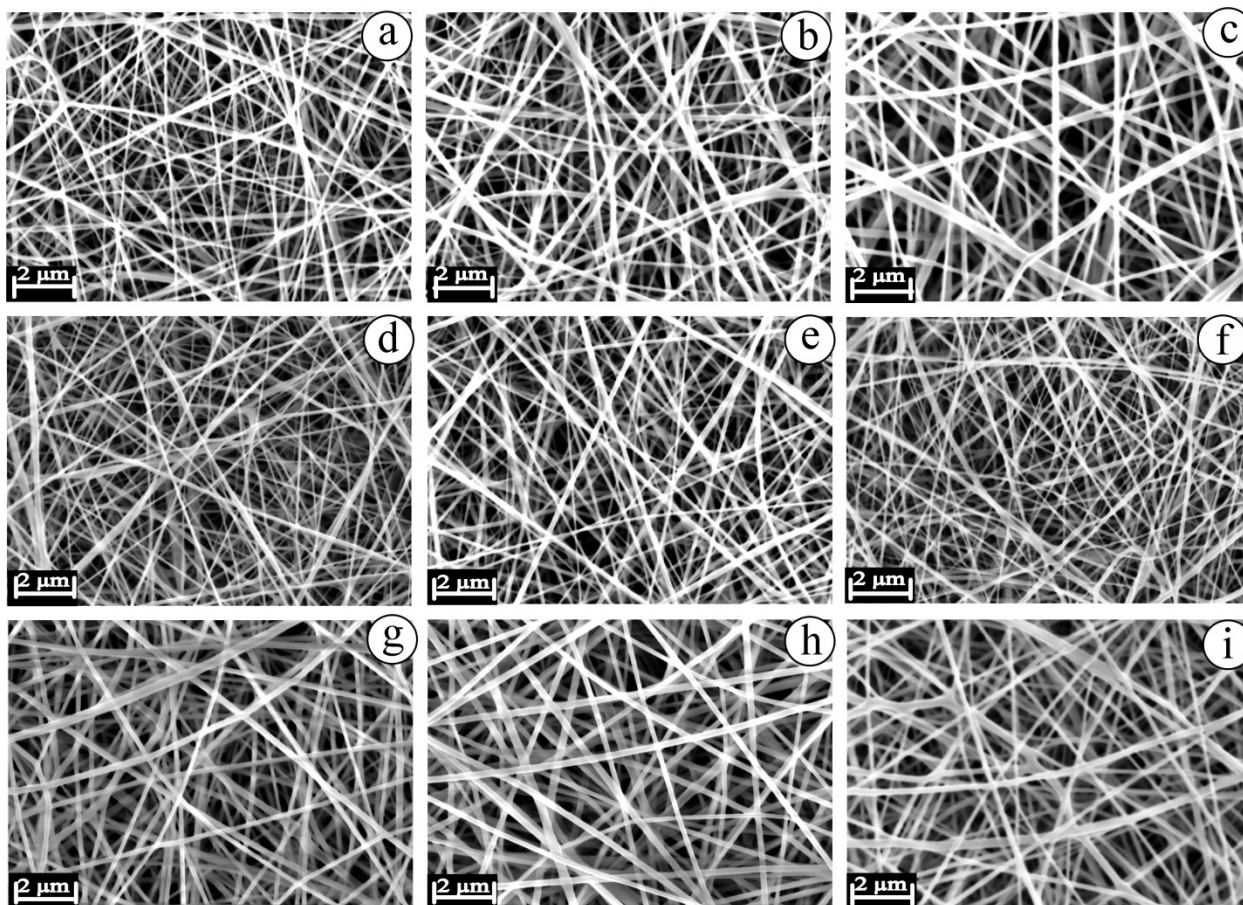


Fig.S3. SEM Morphological images of electrospun AgNPs using 9% EuME-AgNPs.

- (i) Effect of applied voltage: (a) 15 kV (b) 20 kV (c) 25 kV, flow rate - 0.25 ml/hr, needle tip to collector distance - 10 cm. (flow rate and distance kept constant)
- (ii) Effect of needle tip to collector distance: (d) 5 cm (e) 15 cm (f) 25 cm, voltage - 25 kV, flow rate - 0.25 ml/hr. (voltage and flow rate kept constant)
- (iii) Effect of flow rate: (g) 0.3 ml/hr (h) 0.5 ml/hr (i) 0.7 ml/hr, voltage - 25 kV, needle tip to collector distance - 15 cm. (voltage and distance kept constant)