

Electronic Supplementary Information (ESI) for

Development and structural analysis of dual-thermo-responsive self-assembled zwitterionic micelles

*Dandan Zhao,¹ Robin Rajan,¹ Shin-ichi Yusa,² Masaru Nakada,³ Kazuaki Matsumura*¹*

¹School of Materials Science, Japan Advanced Institute of Science and Technology, 1-1

Asahidai, Nomi, Ishikawa, 923-1292, Japan

²Department of Applied Chemistry, Graduate School of Engineering, University of

Hyogo, 2167 Shosha, Himeji, Hyogo 671-2280, Japan

³Toray Research Center, Inc., 3-7 Sonoyama 3-chome, Otsu, Shiga, 520-8558, Japan

* Corresponding author

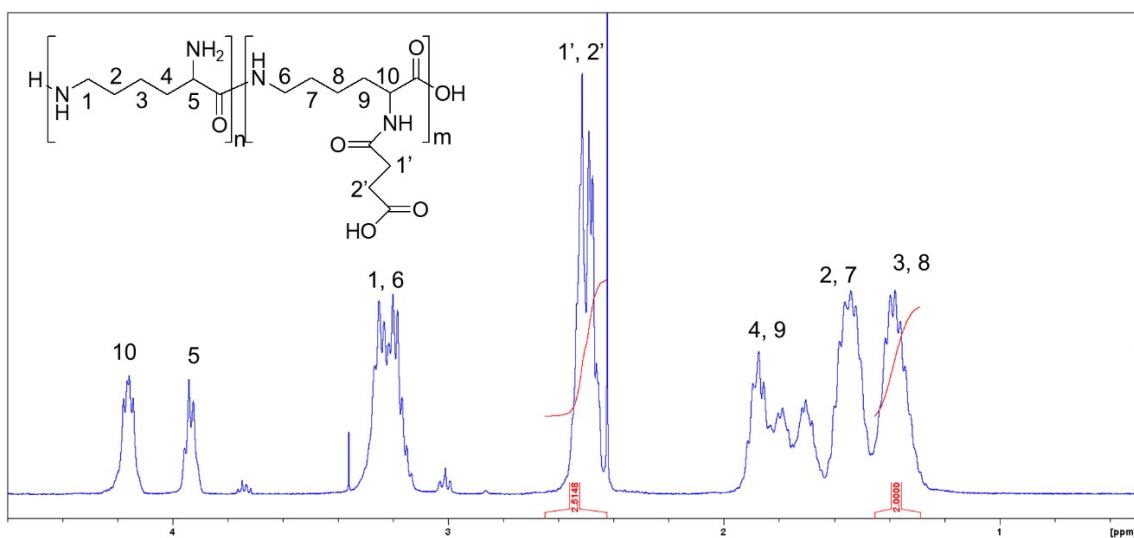


Figure S1. ^1H NMR spectrum of PLLSA50 in D_2O .

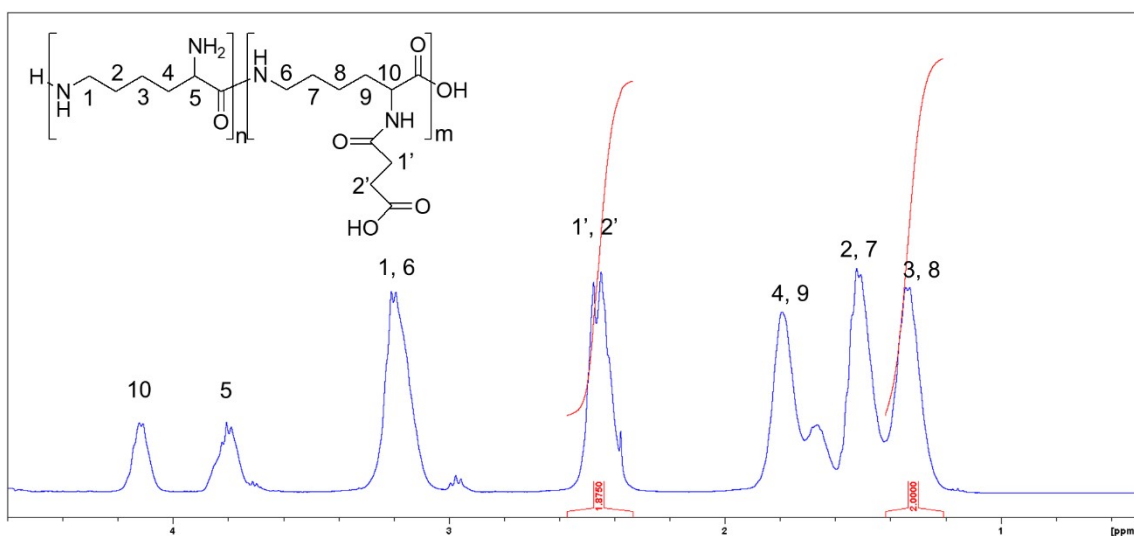


Figure S2. ^1H NMR spectrum of PLLSA65 in D_2O .

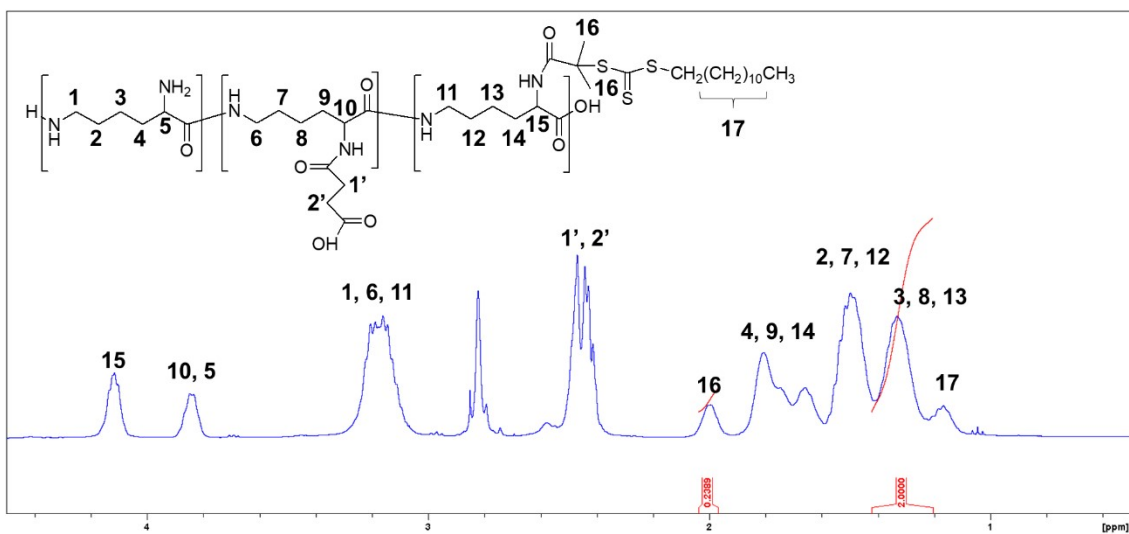


Figure S3. ¹H NMR spectrum of PLLSA50 macro-CTA in D₂O.

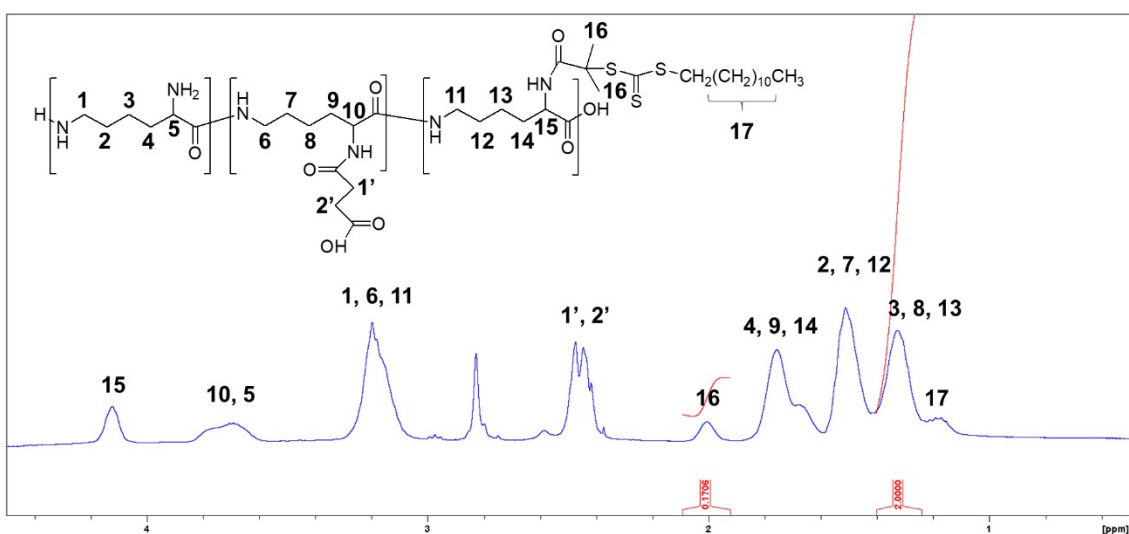


Figure S4. ¹H NMR spectrum of PLLSA65 macro-CTA in D₂O.

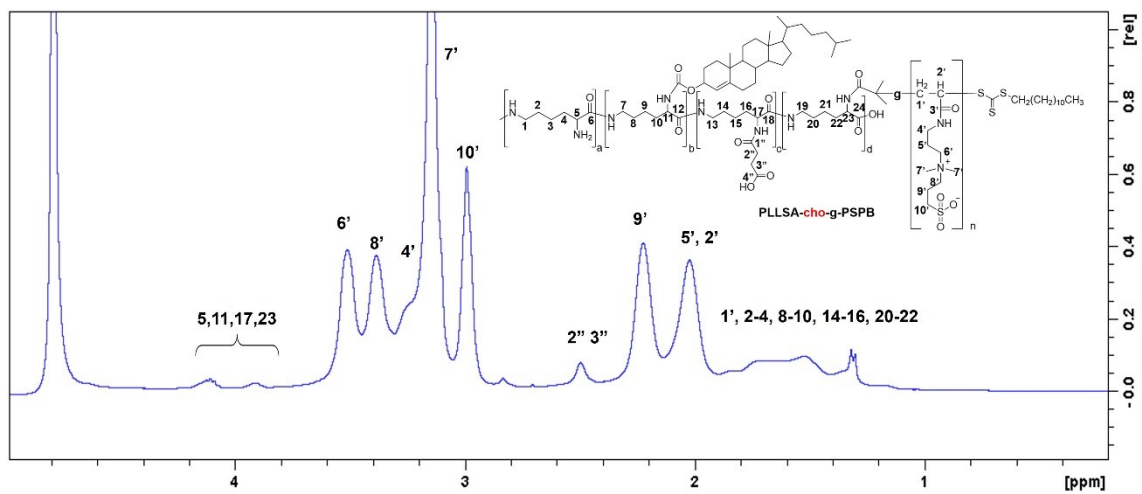


Figure S5. ^1H NMR spectrum of M1 in D_2O .

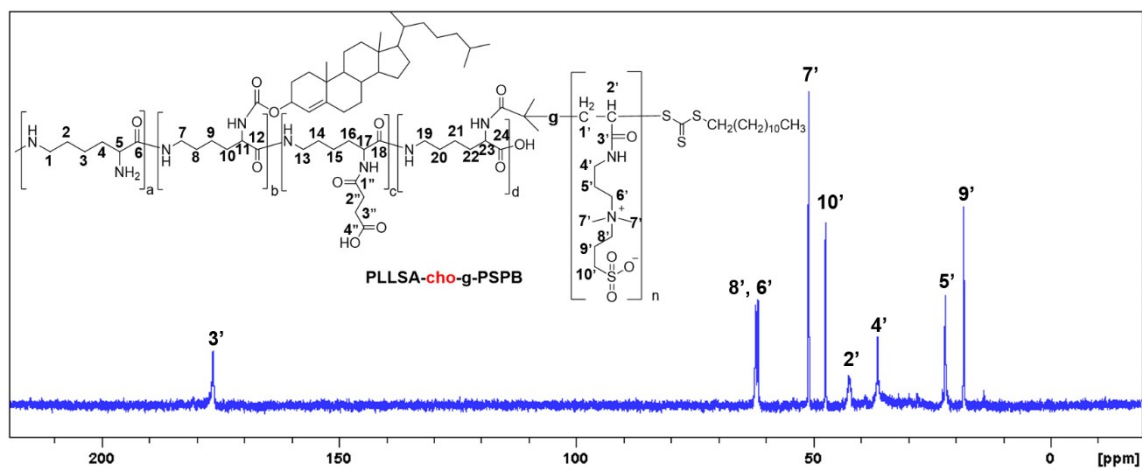


Figure S6. ^{13}C NMR spectrum of M1 in D_2O .

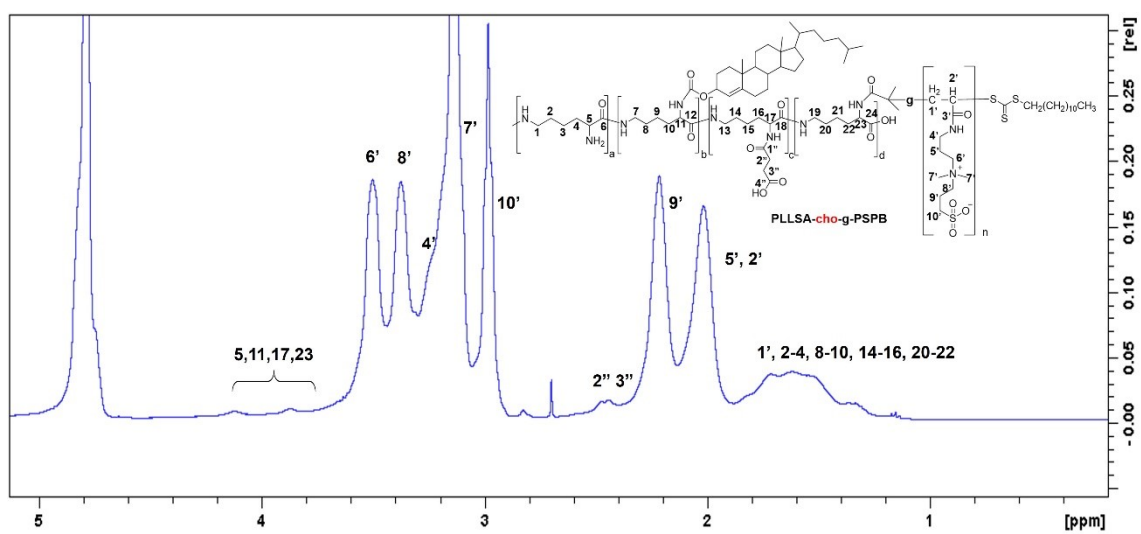


Figure S7. ^1H NMR spectrum of M2 in D_2O .

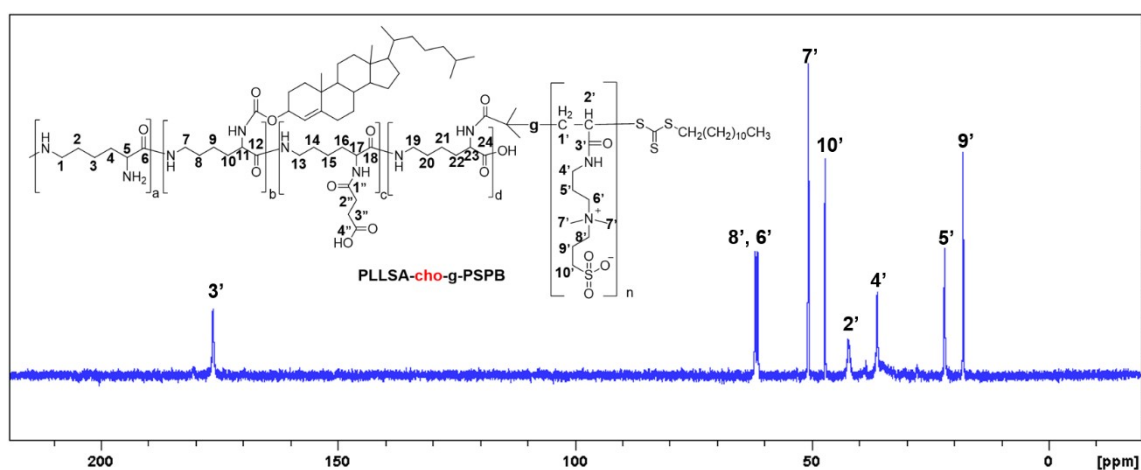


Figure S8. ^{13}C NMR spectrum of M2 in D_2O .

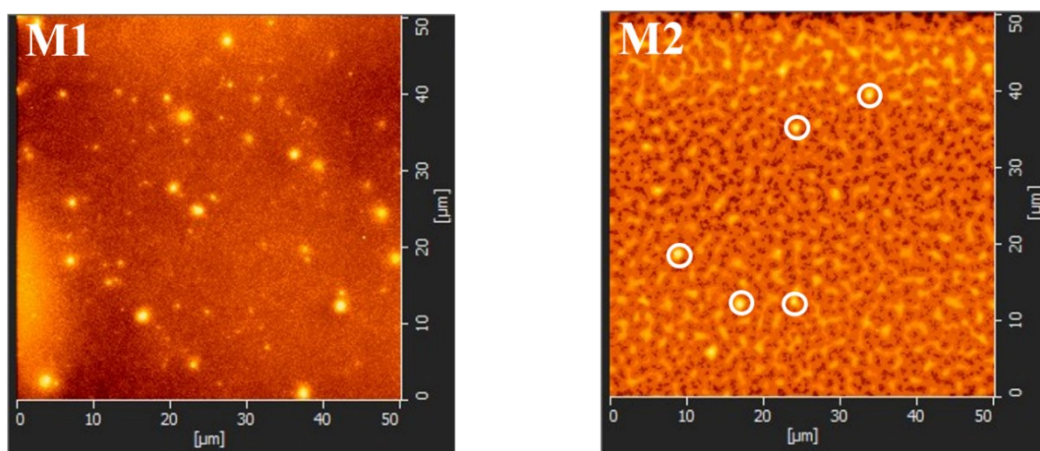


Figure S9. AFM images of M1 and M2 at 0.1% (w/w).

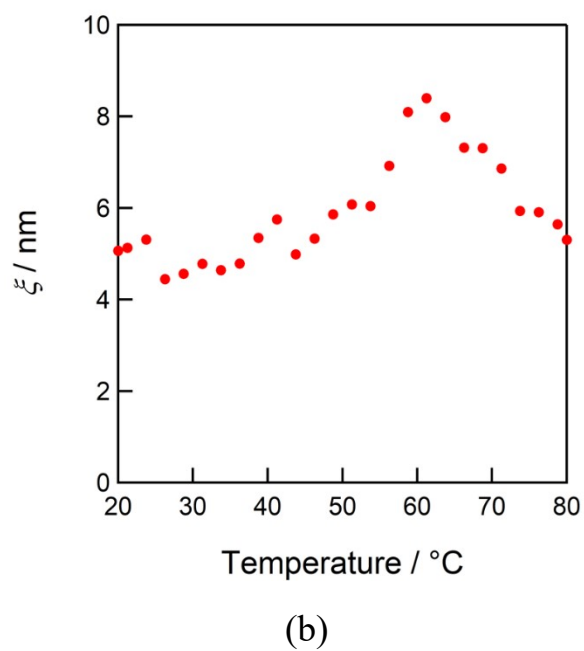
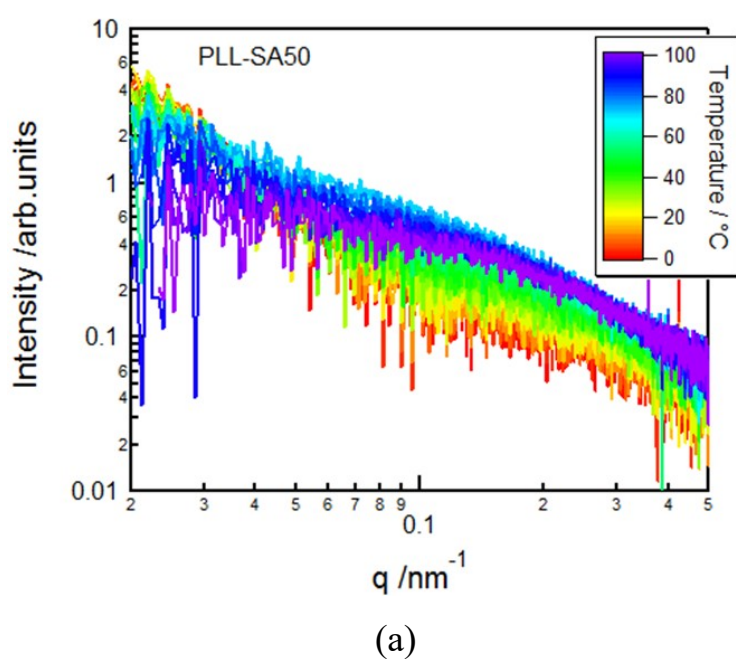


Figure S10. (a) SAXS curves of 5% w/w PLL-SA50 at various temperature in aqueous solution and (b) correlation length (ξ_{OZ}) calculated with Ornstein-Zernike plot analysis at high q region.

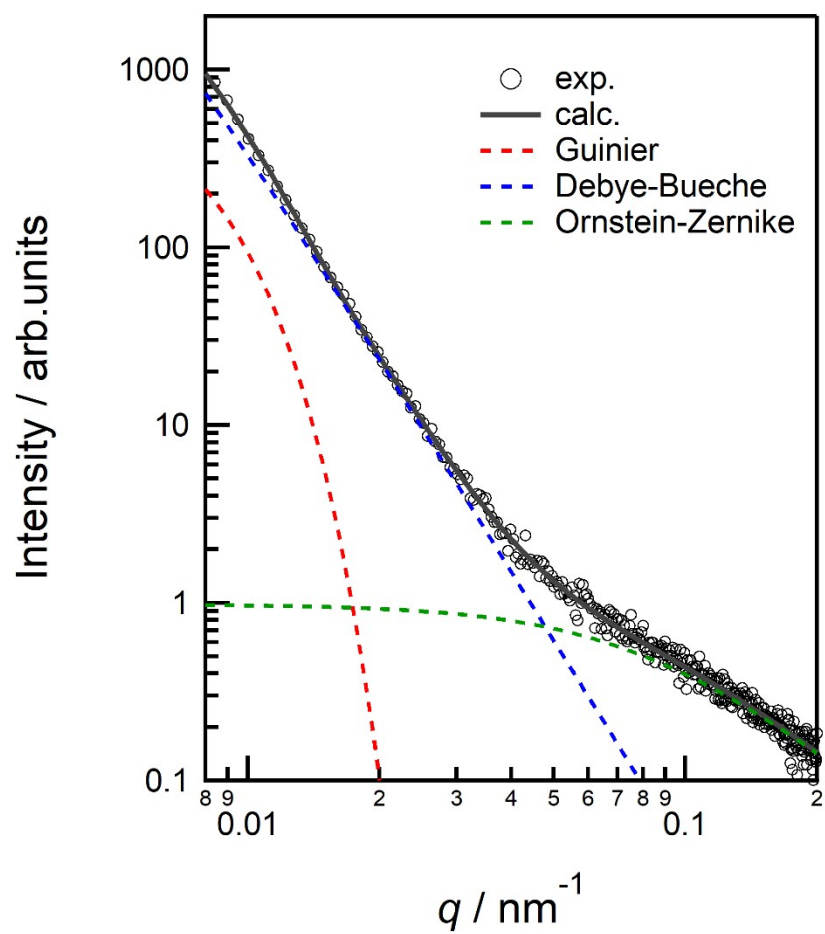


Figure S11. Fitting curves for the SAXS profile at 5°C. The solid line represents the fitted curve; the dashed lines represent the Guinier (red), Debye-Bueche (blue), and Ornstein-Zernike (green) terms.