

Illuminating the norepinephrine transporter: fluorescent probes based on nisoxetine and talopram

Gisela Andrea Camacho-Hernandez^{1*}, Andrea Casiraghi^{1,2*}, Deborah Rudin³, Dino Luethi^{3,4},
Therese C. Ku¹, Daryl A. Guthrie¹, Valentina Straniero², Ermanno Valoti², Gerhard J. Schütz⁴,
Harald H. Sitte³, Amy Hauck Newman¹

1. Medicinal Chemistry Section, Molecular Targets and Medications Discovery Branch, National Institutes of Drug Abuse - Intramural Research Program, Baltimore, MD 21224, USA. 2. Department of Pharmaceutical Sciences, University of Milan, Via Mangiagalli 25, 20133, Milan, Italy 3. Institute of Pharmacology, Center for Physiology and Pharmacology, Medical University of Vienna, Waehringer Strasse 13a, 1090, Vienna, Austria. 4. Institute of Applied Physics, TU Wien, Lehgasse 6, 1060 Vienna, Austria

*G.A.C.H. and A.C. contributed equally to this work.

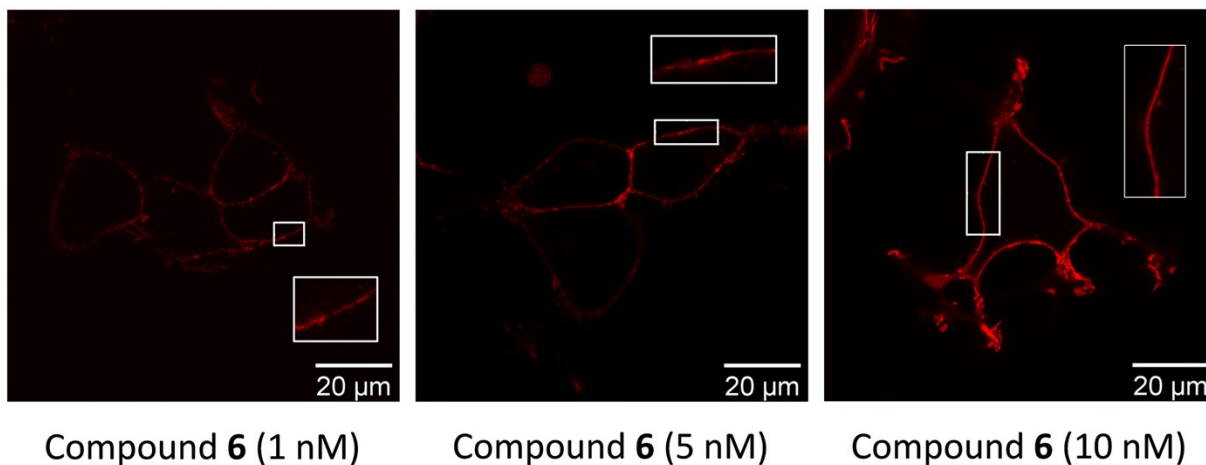


Fig. 1S Visualization of HEK293-NET cells by laser scanning microscopy incubated with 1, 5, and 10 nM of compound 6 for 10 min.

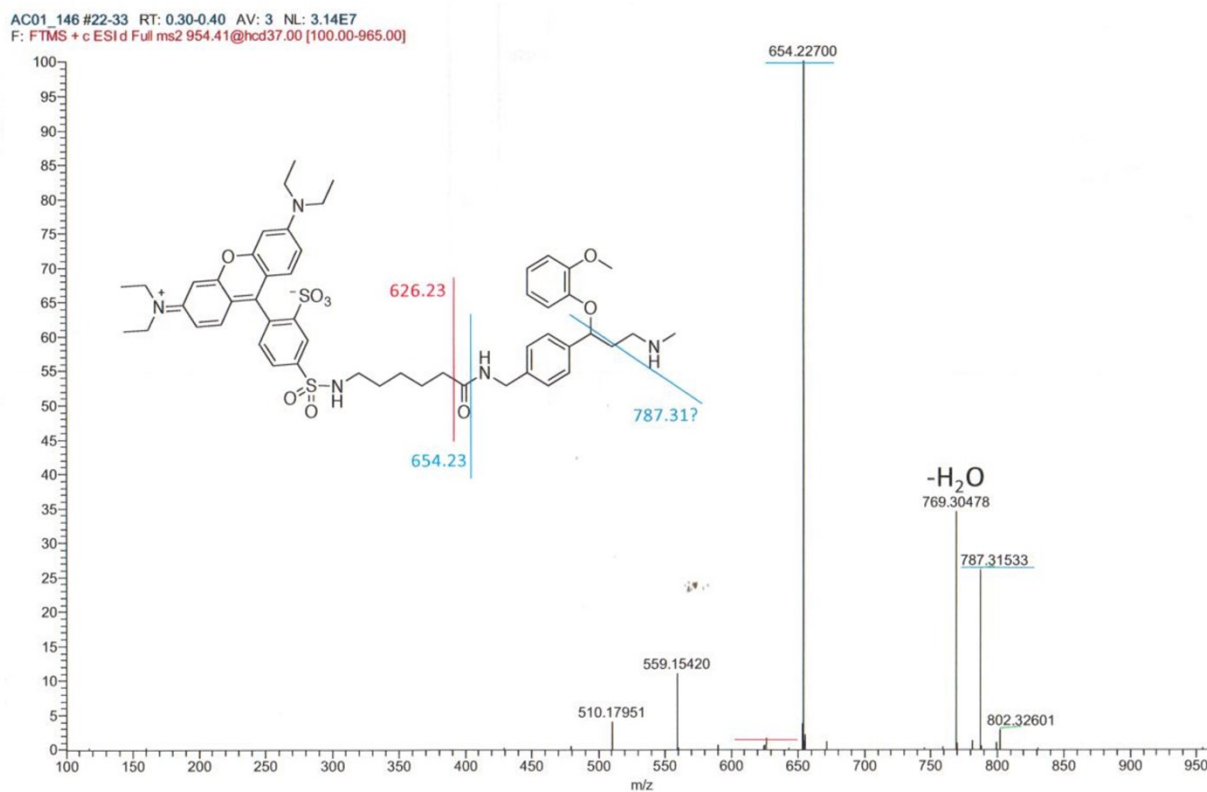


Fig. 2S HRMS of compound 6.

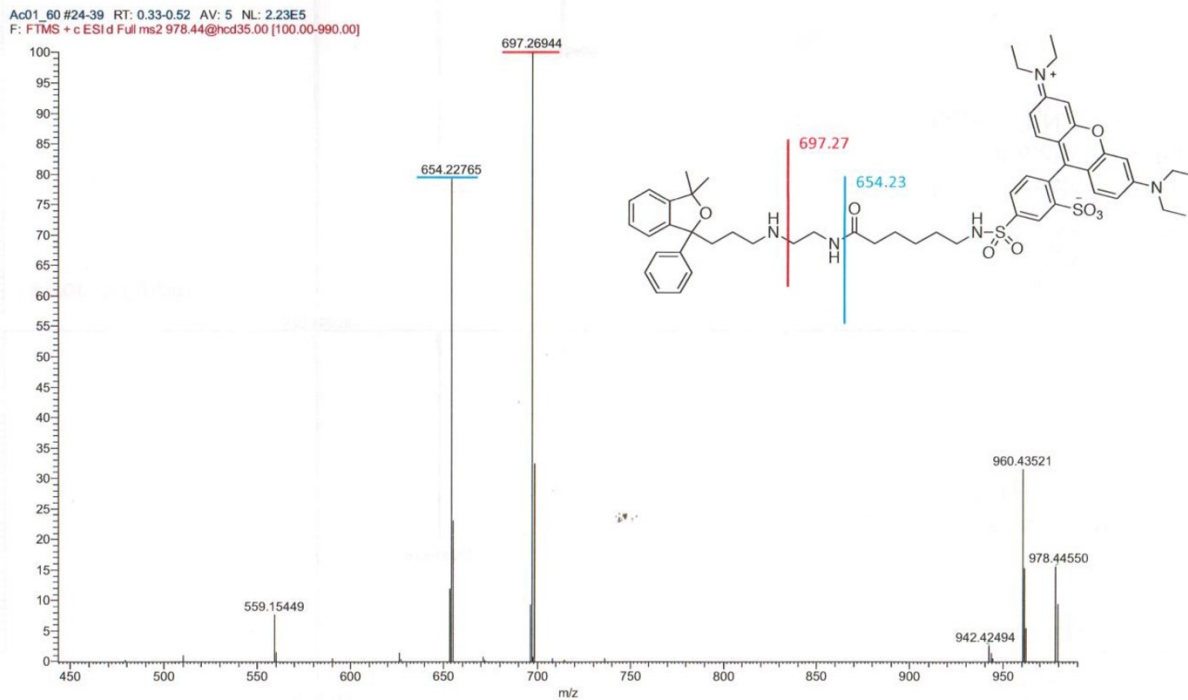


Fig. 3S HRMS of compound **13**.

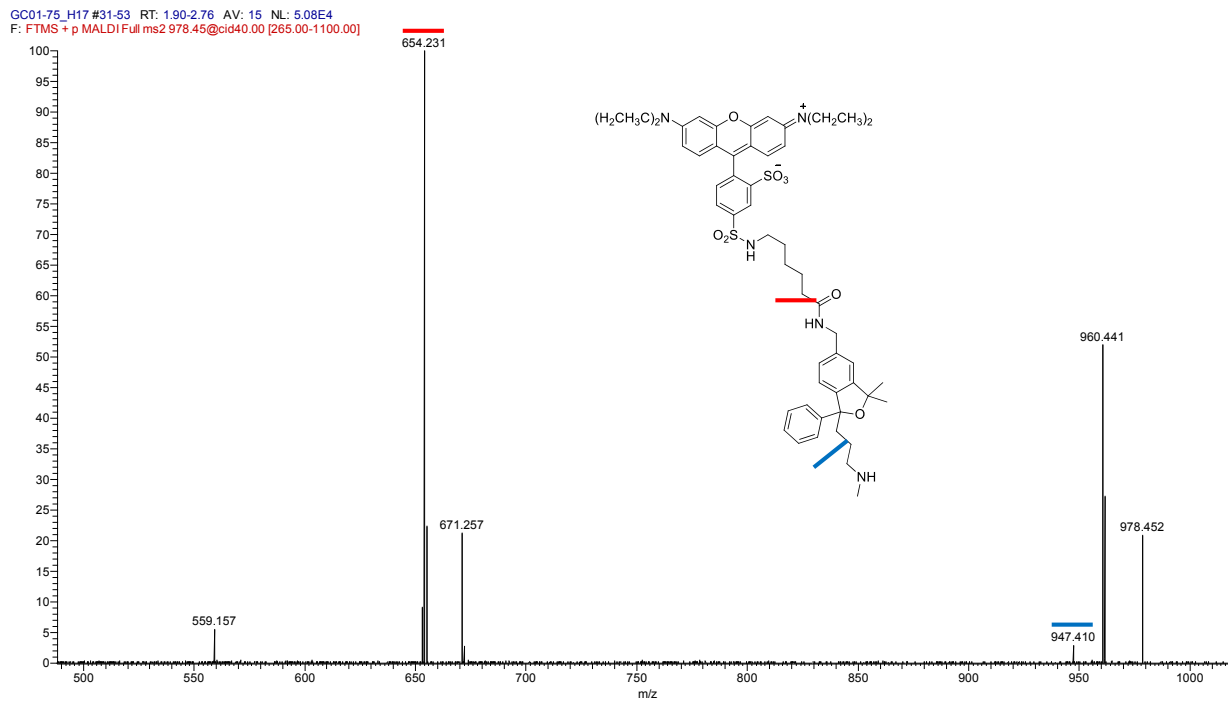


Fig. 4S HRMS of compound **21**.