

Study of Colored Lacquerwares from Zenghou Yi Tomb in early Warring States

Authors' name: Meng Wu¹, Yunfan Zhang², Bingjian Zhang^{1,3}, Lan Li⁴

Publication: NEW JOURNAL OF CHEMISTRY

Supplementary Information

Table.S1 Sensitivity and specificity of the antibodies

Anti-X Antibody	Ovalbumin	Casein	Collagen I	Lacquer glycoprotein
Dilution	1:10000	1:4000	1:4000	1:20000
Dilution of HRP- IgG(H+L)	1:10000	1:10000	1:4000	1:20000
Minimum detection ($\mu\text{g/ml}$)	10^{-5}	10^{-6}	10^{-3}	10^{-6}
Natural Adhesive				
Egg	+++	-	-	-
Milk	-	+++	-	-
Gelatin	-	-	+++	-
Lacquer	-	-	-	+++
Peach gum	-	-	-	-
Arabic aum	-	-	-	-
Astragalus Gum	-	-	-	-
Rosin	-	-	-	-
Shellac	-	-	-	-
Glutinous rice	-	-	-	-
Wheat flour	-	-	-	-
Bletilla Gum	-	-	-	-
Algin	-	-	-	-

Pre-experiments of ELISA were carried out to optimize the dilution of antibodies and determine their sensitivity. The results were shown in Table.S1, Figure.S1, Figure.S2, Figure.S3 and Figure.S4.

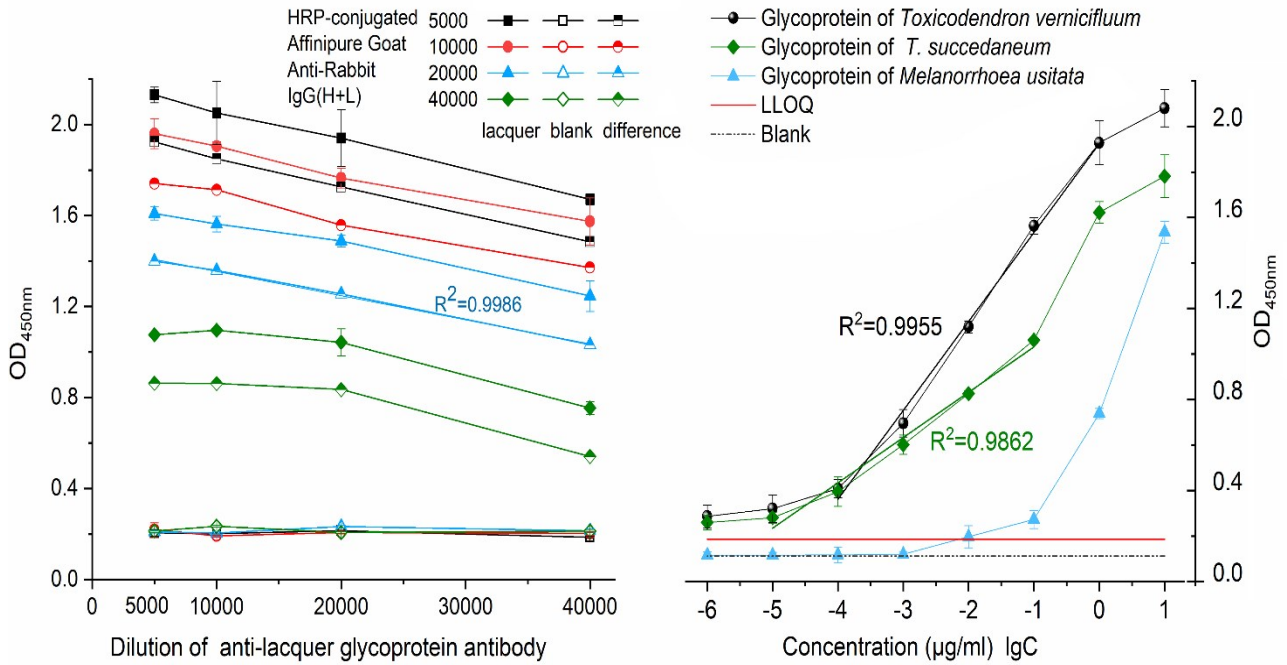


Figure.S1 Optimized dilution and sensitivity of anti-lacquer glycoprotein antibody

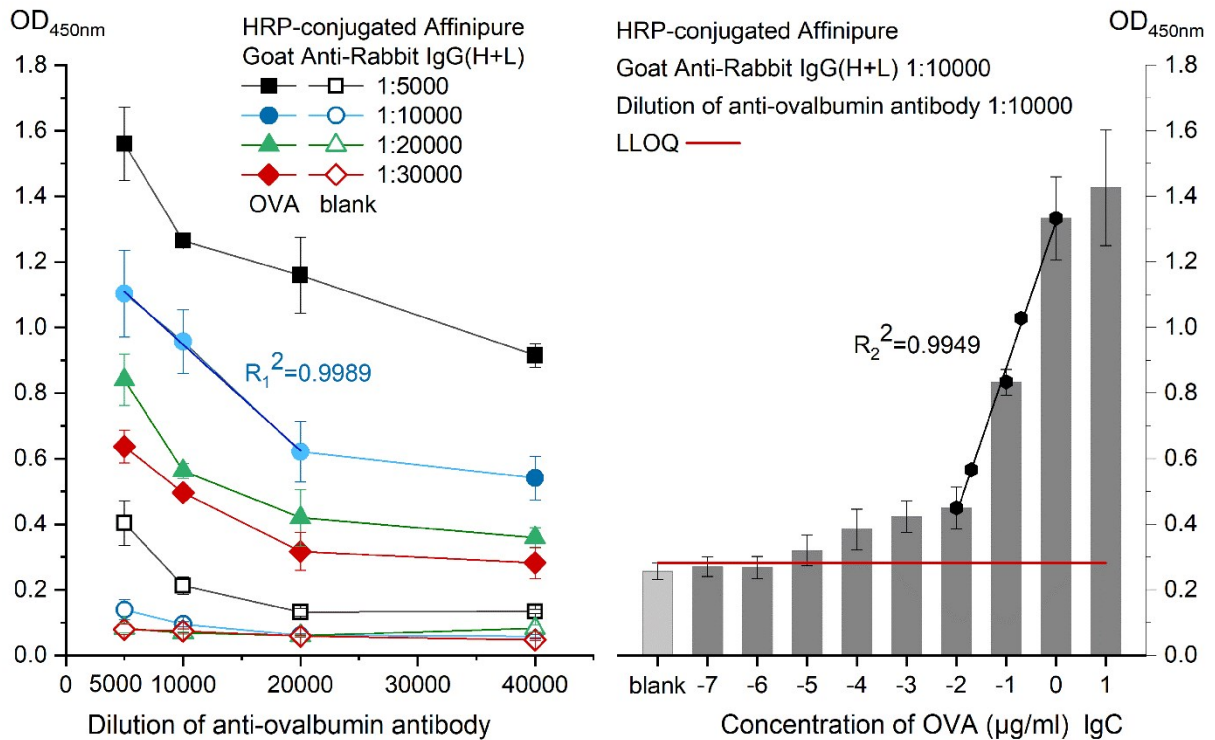


Figure.S2 Optimized dilution and sensitivity of anti-ovalbumin antibody

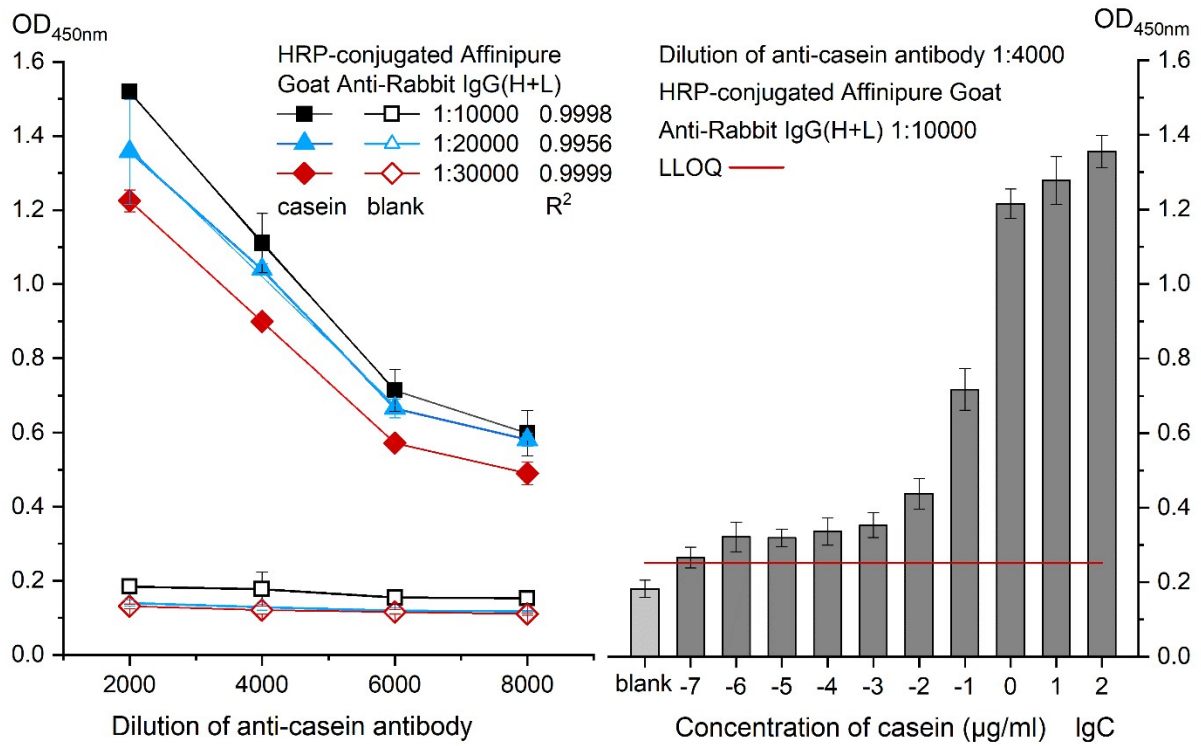


Figure.S3 Optimized dilution and sensitivity of anti-casein antibody

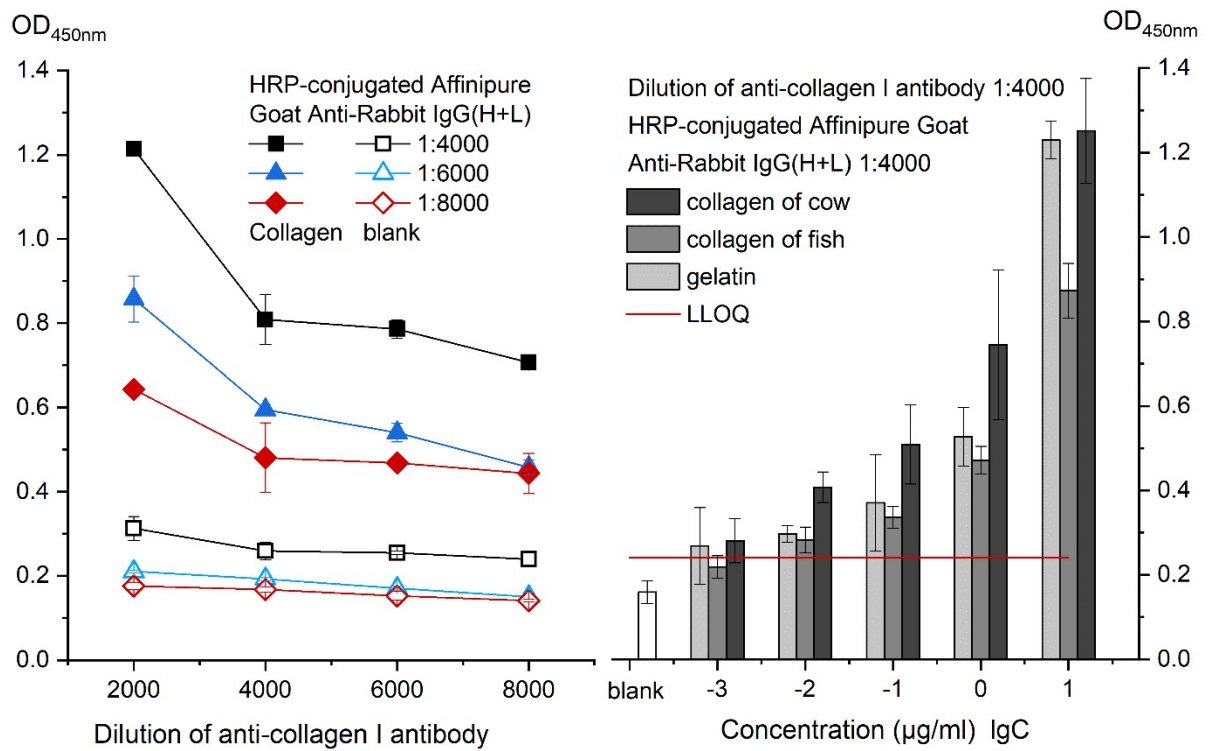


Figure.S4 Optimized dilution and sensitivity of anti-collagen antibody